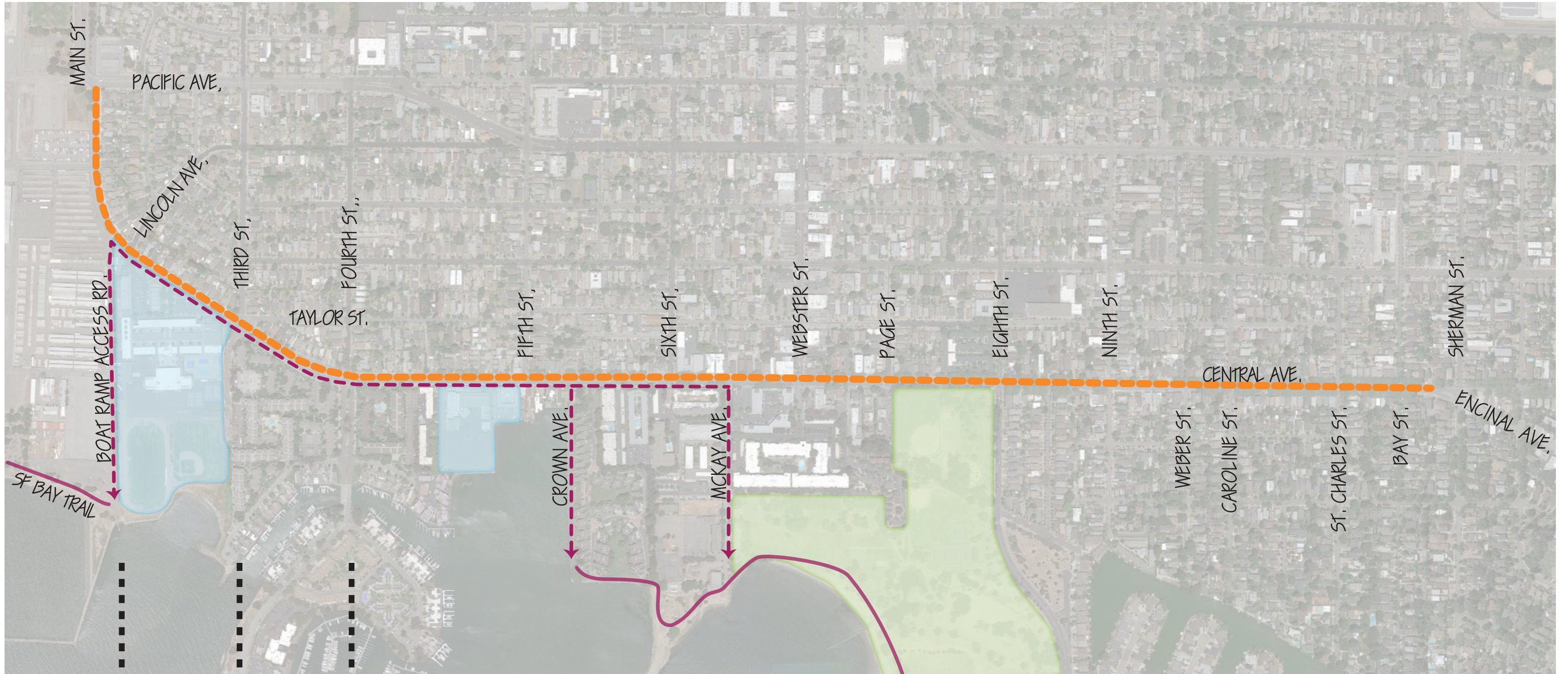


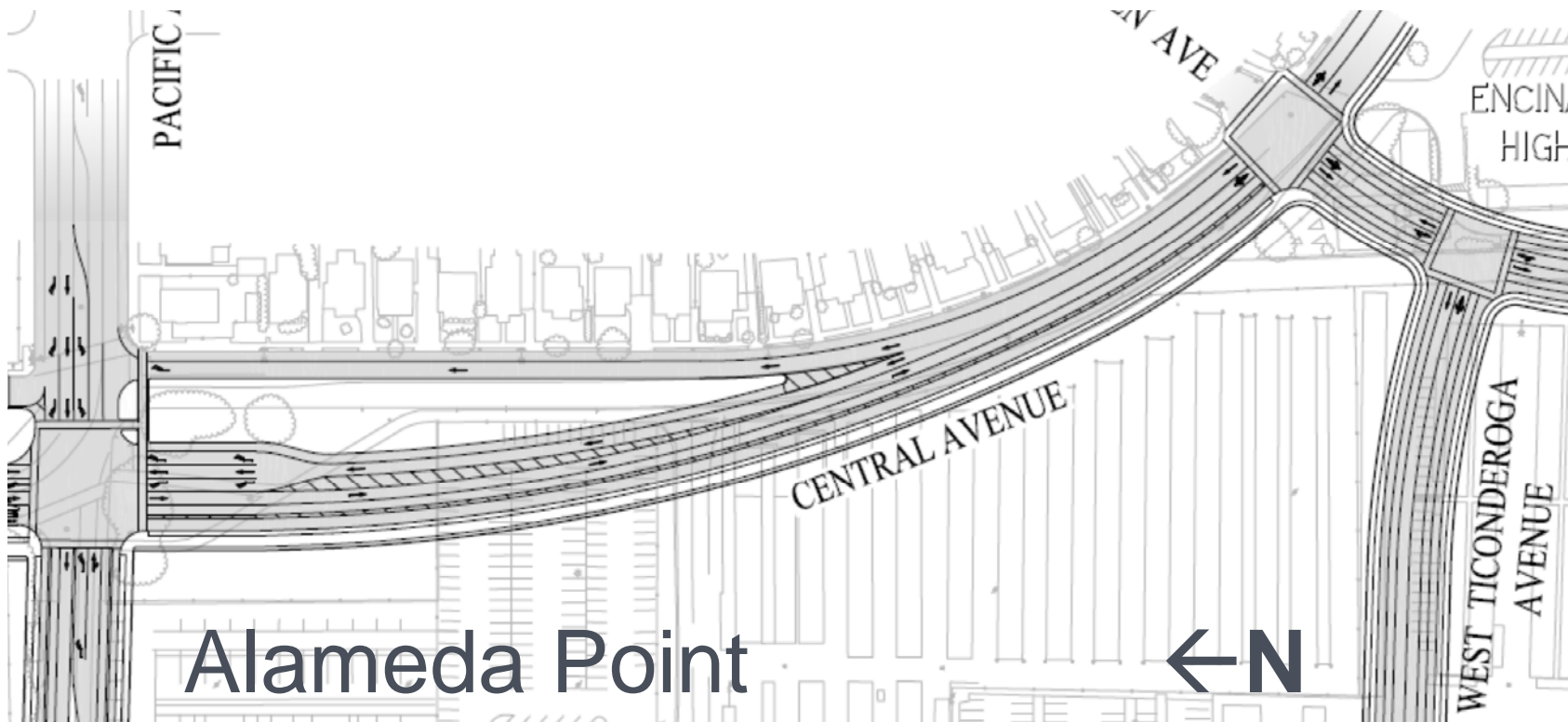
Project Overview Map

Preferred Options Hand-out



1 | 2 | 3 | 4

Segment 1: Pacific/Main to Boat Ramp Access (Alameda Point)



- Preliminary Concept: Cycle Track + Class 2 Bike Lanes = Fernside Blvd. model

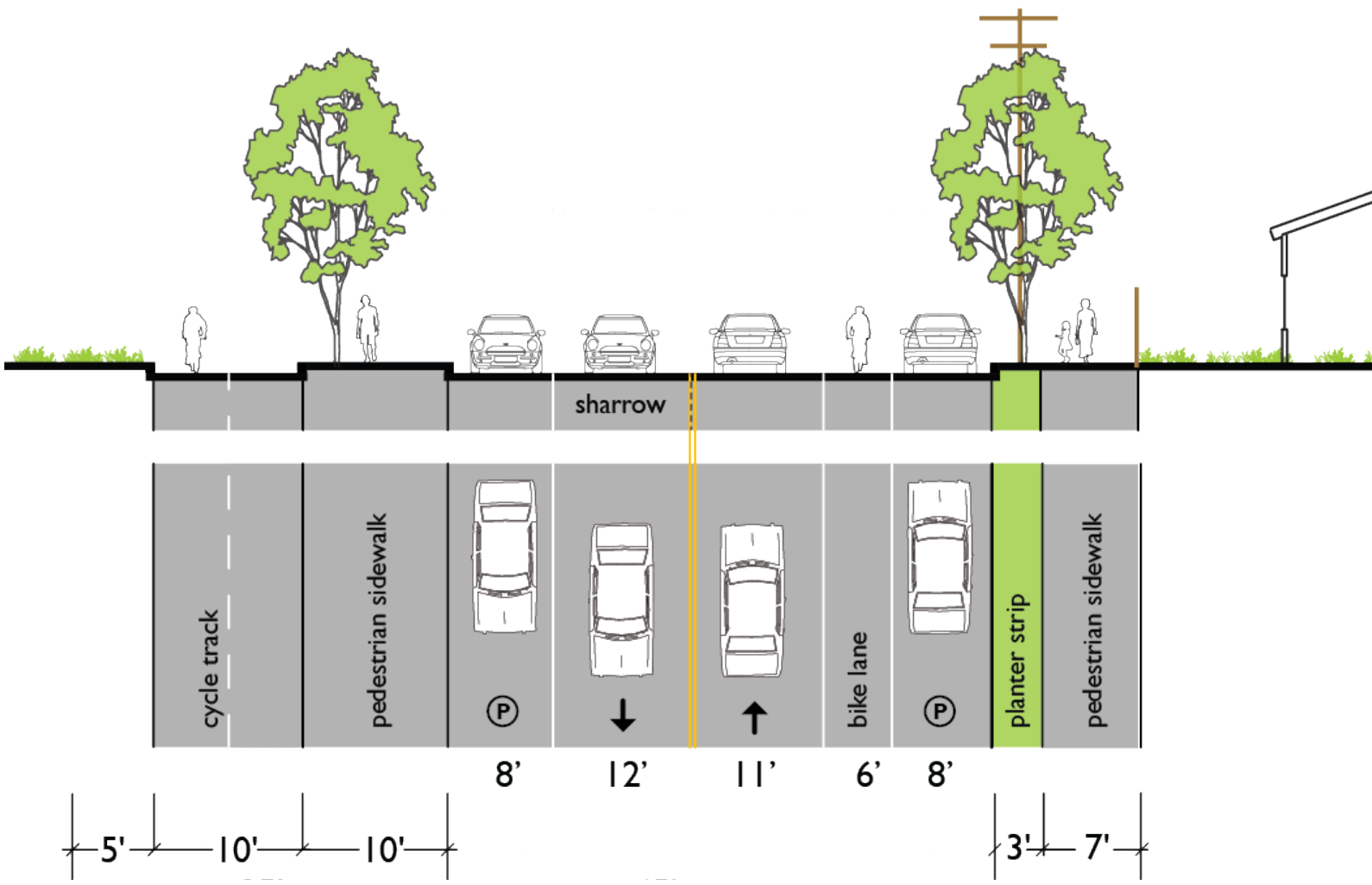
A diagram illustrating a street layout with four distinct zones from left to right: "PARK" (represented by a car with a 'P' sign), "LOAD" (represented by a person with a bicycle), "BIKE" (represented by a person on a bicycle), and "WALK" (represented by a person walking). The zones are separated by physical barriers or curbs.

A photograph showing three people riding bicycles on a street. A yellow line on the pavement indicates a dedicated bike lane. The scene is outdoors with trees and a clear sky.

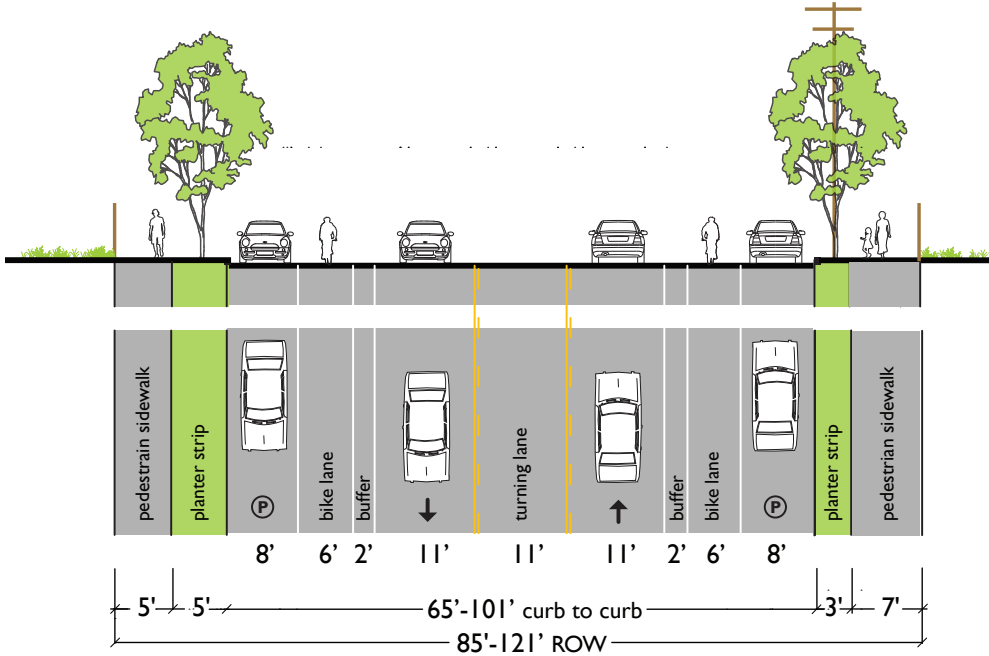
© Jonathan Maus/BikePortland

Source: Alameda Point Master Infrastructure Plan (2014)

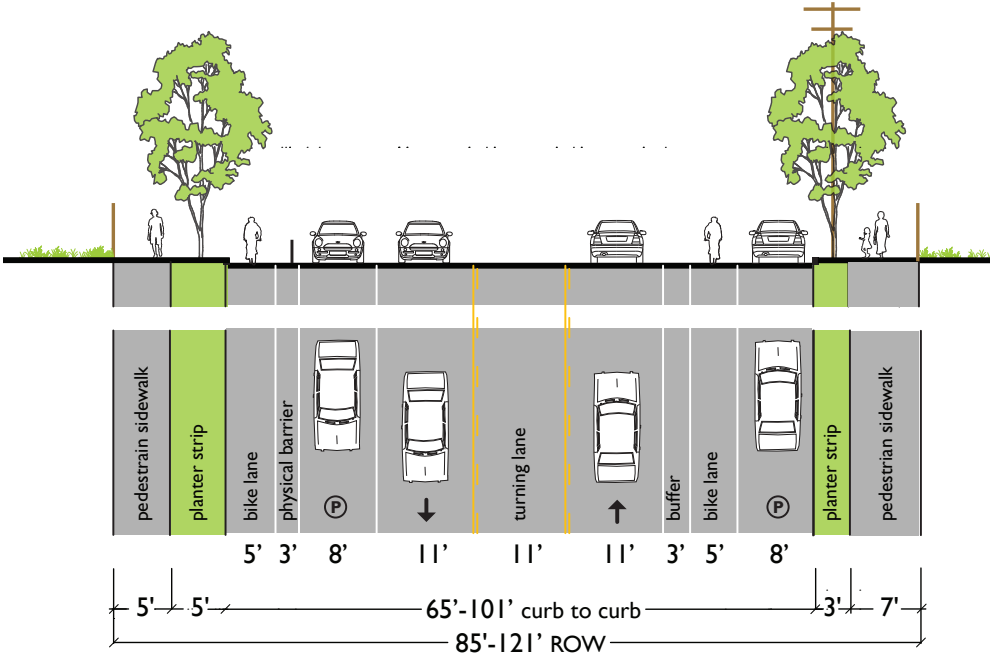
Segment 2: Boat Ramp Access to Third/Taylor (Cycle Track and Bike Lane)



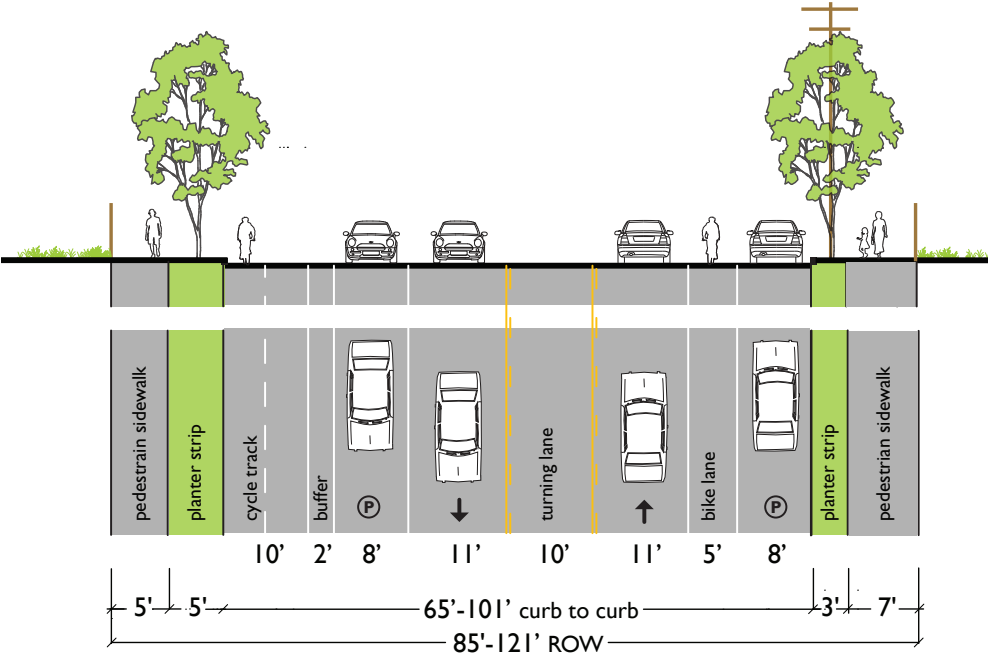
Segment 3: Third/Taylor to Fourth/Ballena



(Buffered Bike Lanes)



(One-Way Cycle Track)



(Two-Way Cycle Track)

Segment 4: Fourth/Ballena to Sherman/Encinal (Bike Lanes)

