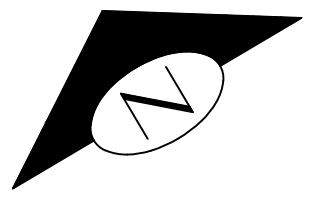


MATCH LINE SEE SHEET 11

MATCH LINE SEE SHEET 2



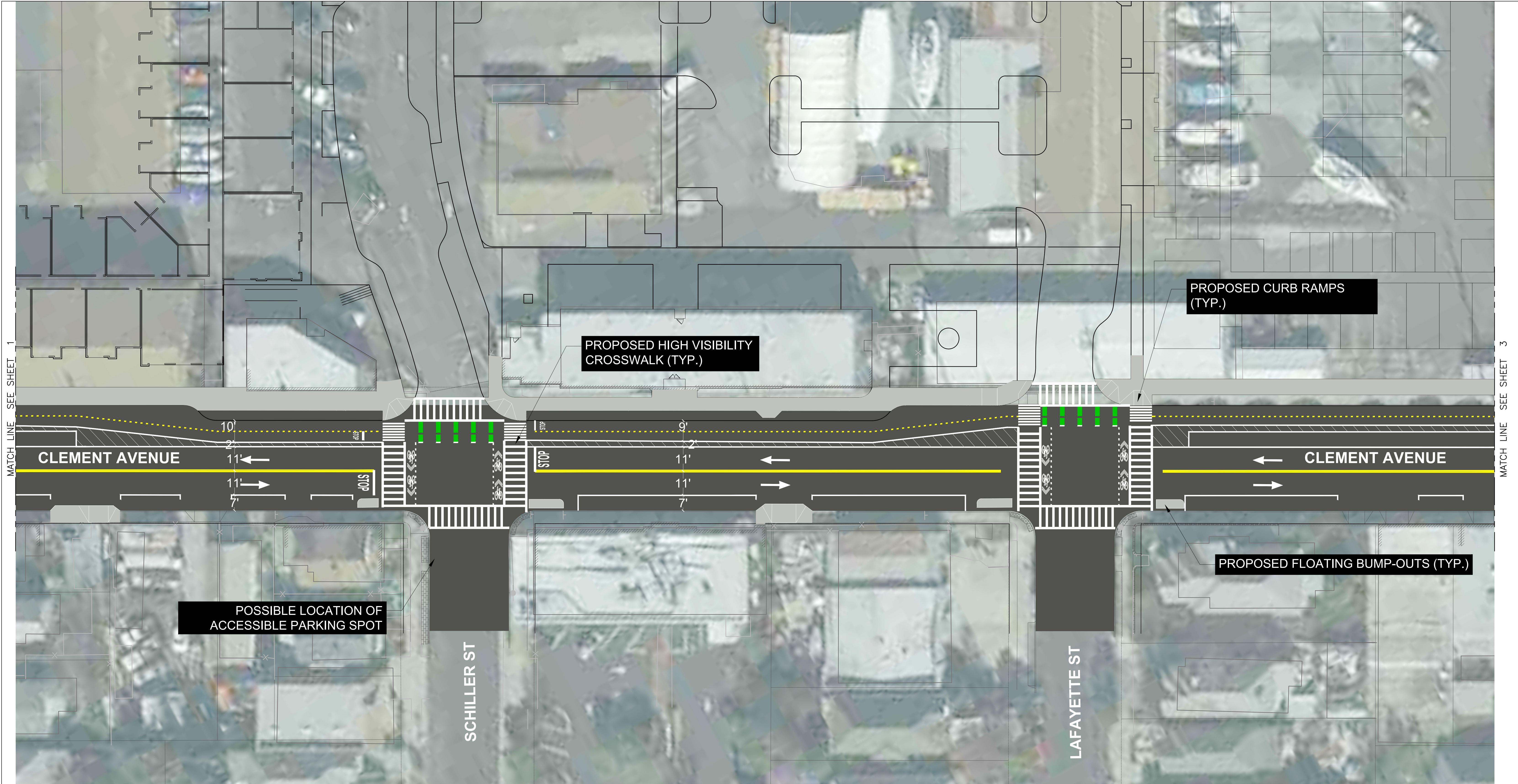
PRELIMINARY DRAFT - NOT FOR CONSTRUCTION

■ PROPOSED SIDEWALK CONSTRUCTION



CLEMENT AVENUE SAFETY IMPROVEMENTS PROJECT
 TWO-WAY PROTECTED BIKE LANE CONCEPTUAL DESIGN OPTION
 SHEET 1/11
 MAY 2019

C:\cdmex\smth\c\0342379\Clement Ave Two Way PBL.dwg
 May-24-19 9:28am

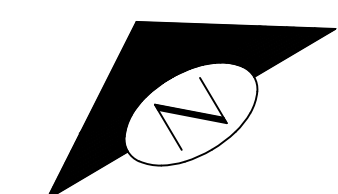


MATCH LINE SEE SHEET 1

MATCH LINE SEE SHEET 3

PRELIMINARY DRAFT - NOT FOR CONSTRUCTION

■ PROPOSED SIDEWALK CONSTRUCTION



CLEMENT AVENUE SAFETY IMPROVEMENTS PROJECT

TWO-WAY PROTECTED BIKE LANE CONCEPTUAL DESIGN OPTION

SHEET 2/11

MAY 2019

C:\cdmex\smth\0342379\Clement Ave Two Way PBL.dwg
May-24-19 9:28am



MATCH LINE SEE SHEET 3

MATCH LINE SEE SHEET 4

CHESTNUT ST

STANFORD ST

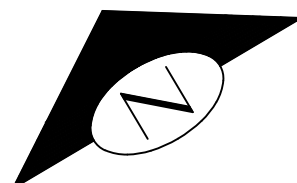
CLEMENT AVENUE

PROPOSED CURB RAMPS

PROPOSED FLOATING BUMP-OUT

POSSIBLE LOCATION OF ACCESSIBLE PARKING SPOT

POSSIBLE LOCATION OF ACCESSIBLE PARKING SPOT



PRELIMINARY DRAFT - NOT FOR CONSTRUCTION

■ PROPOSED SIDEWALK CONSTRUCTION



CLEMENT AVENUE SAFETY IMPROVEMENTS PROJECT

TWO-WAY PROTECTED BIKE LANE CONCEPTUAL DESIGN OPTION

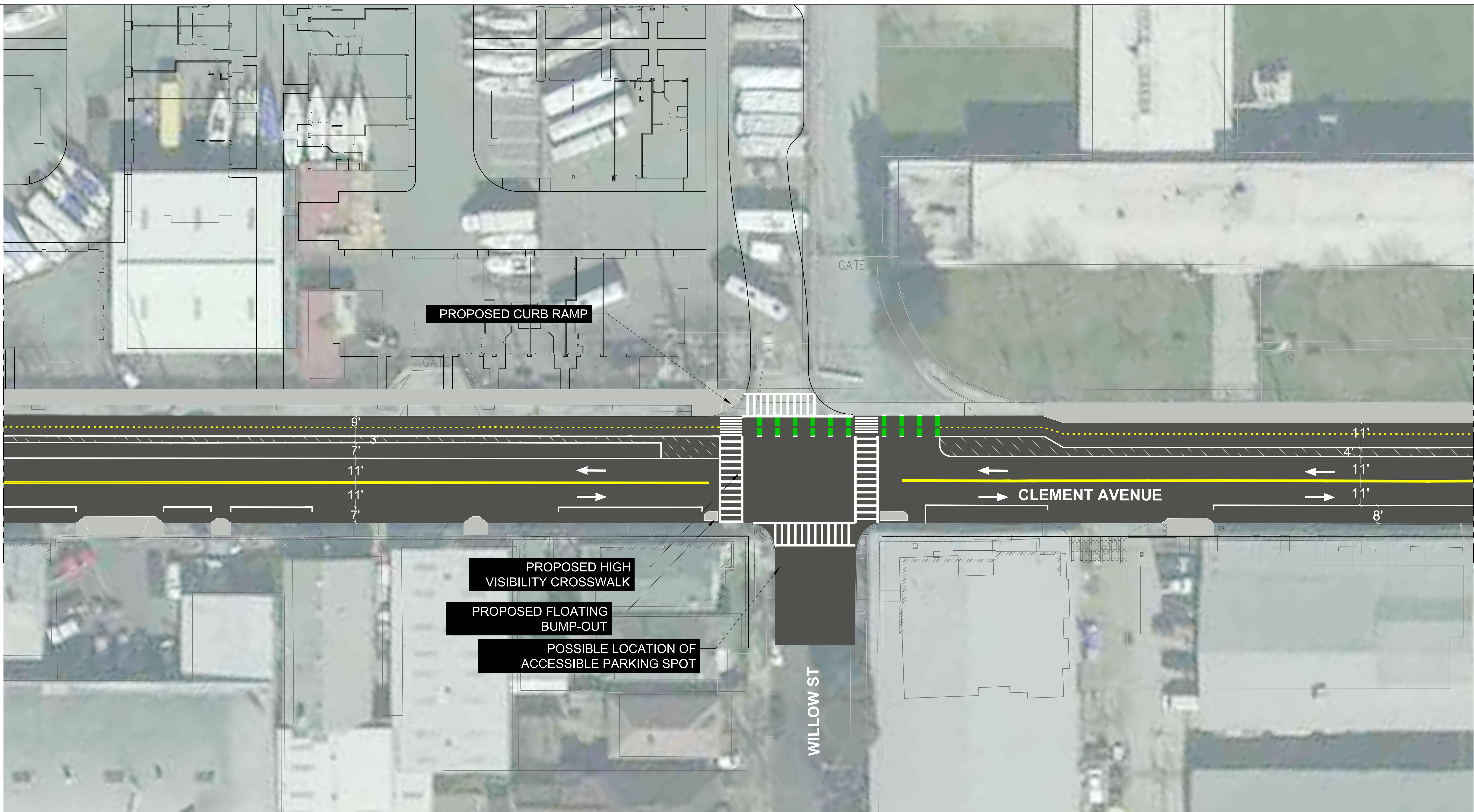
SHEET 3/11

MAY 2019

C:\cdmex\smth\0342379\Clement Ave Two Way PBL.dwg
May-24-19 9:29am

MATCH LINE SEE SHEET 3

MATCH LINE SEE SHEET 5



PROPOSED CURB RAMP

PROPOSED HIGH VISIBILITY CROSSWALK

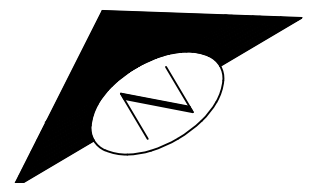
PROPOSED FLOATING BUMP-OUT

POSSIBLE LOCATION OF ACCESSIBLE PARKING SPOT

WILLOW ST

CLEMENT AVENUE

PROPOSED SIDEWALK CONSTRUCTION



PRELIMINARY DRAFT - NOT FOR CONSTRUCTION



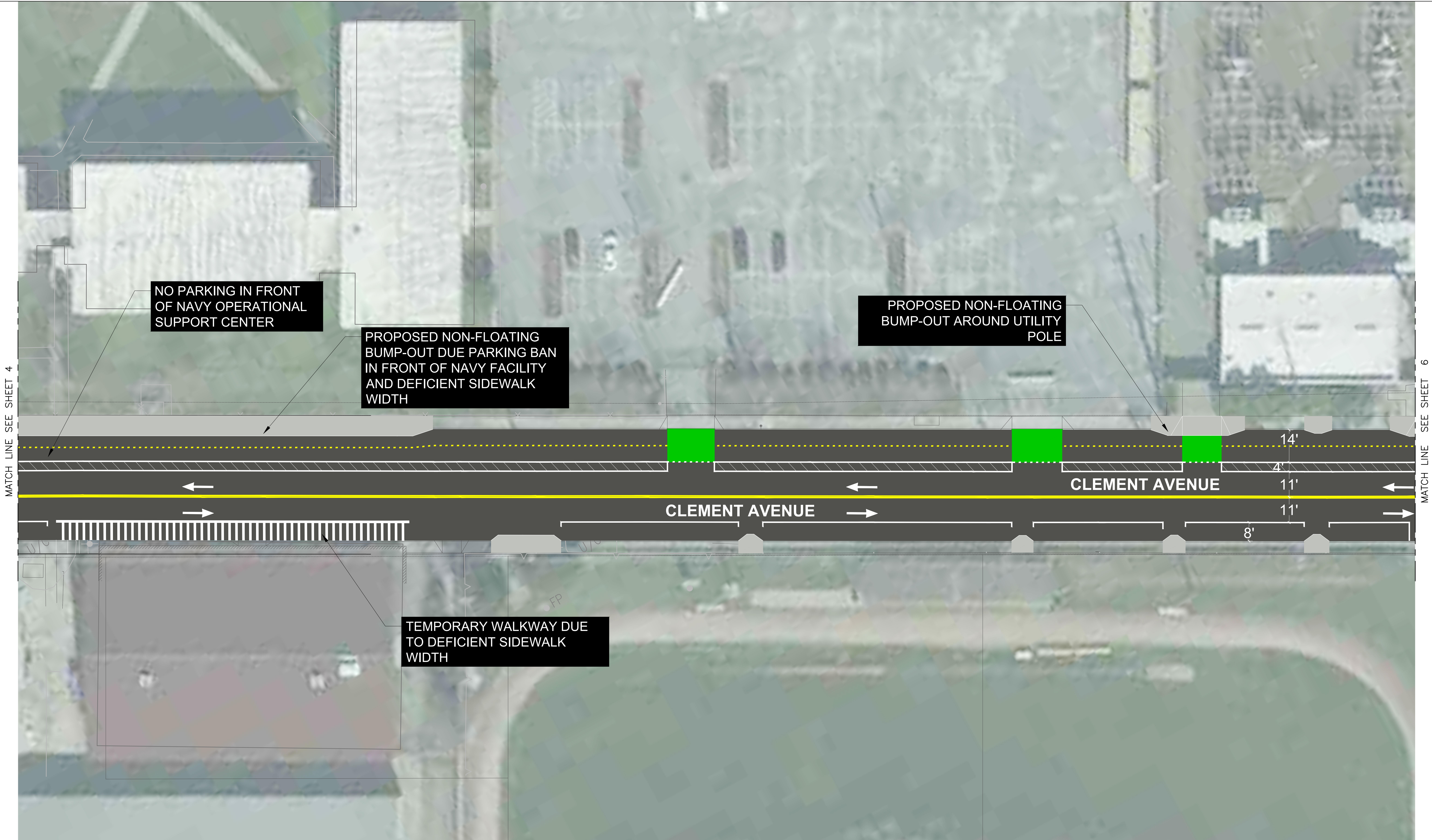
CLEMENT AVENUE SAFETY IMPROVEMENTS PROJECT

TWO-WAY PROTECTED BIKE LANE CONCEPTUAL DESIGN OPTION

SHEET 4/11

MAY 2019

C:\cdmex\smth\cd0342379\Clement Ave Two Way PBL.dwg
May-24-19 9:29am



MATCH LINE SEE SHEET 4

MATCH LINE SEE SHEET 6

NO PARKING IN FRONT OF NAVY OPERATIONAL SUPPORT CENTER

PROPOSED NON-FLOATING BUMP-OUT DUE PARKING BAN IN FRONT OF NAVY FACILITY AND DEFICIENT SIDEWALK WIDTH

PROPOSED NON-FLOATING BUMP-OUT AROUND UTILITY POLE

TEMPORARY WALKWAY DUE TO DEFICIENT SIDEWALK WIDTH

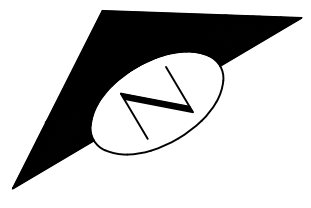
CLEMENT AVENUE

CLEMENT AVENUE

14'
4'
11'
11'
8'

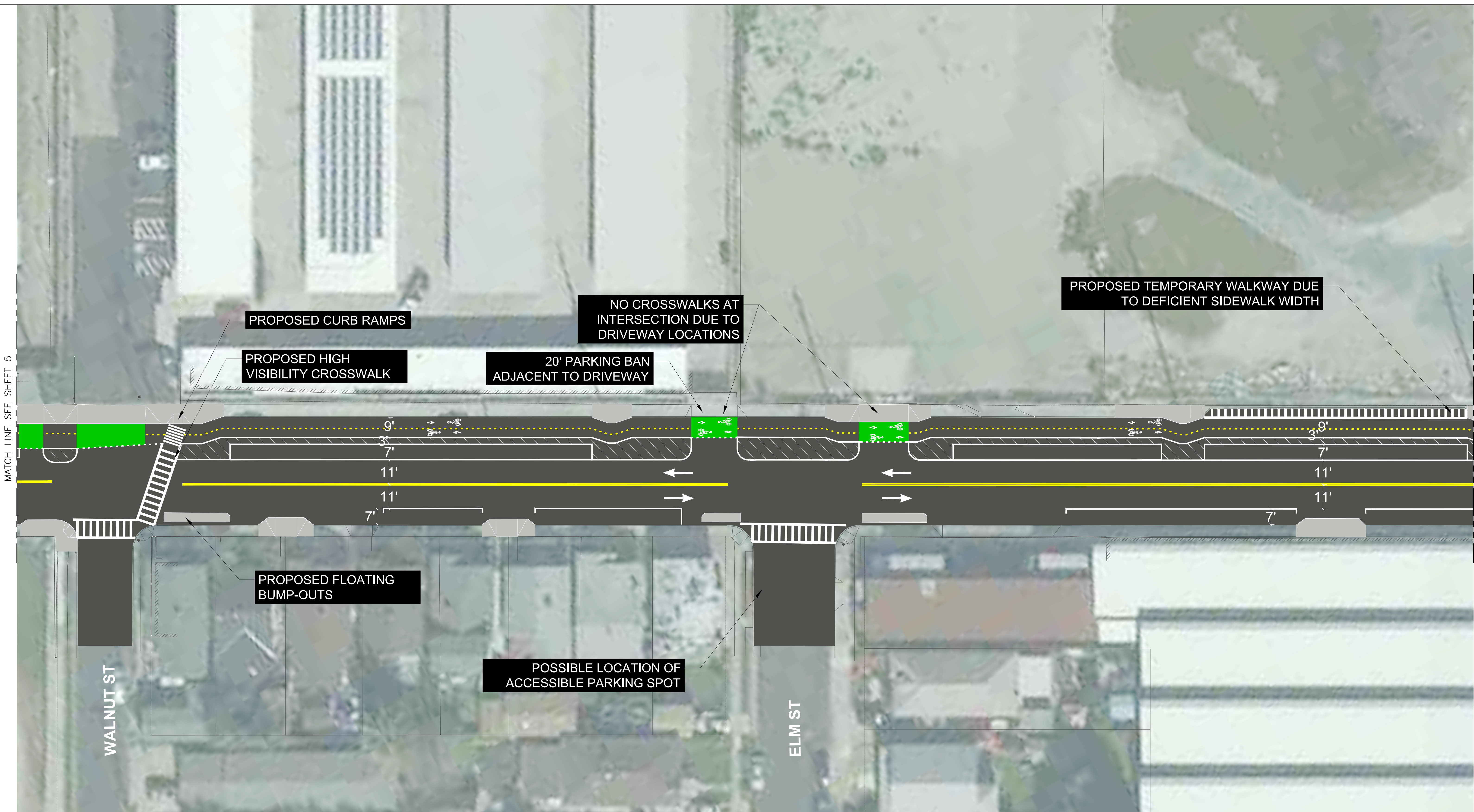
PRELIMINARY DRAFT - NOT FOR CONSTRUCTION

■ PROPOSED SIDEWALK CONSTRUCTION



CLEMENT AVENUE SAFETY IMPROVEMENTS PROJECT
 TWO-WAY PROTECTED BIKE LANE CONCEPTUAL DESIGN OPTION
 SHEET 5/11
 MAY 2019

C:\cdmex\smth\cd0342379\Clement Ave Two Way PBL.dwg
 May-24-19 9:29am



MATCH LINE SEE SHEET 5

MATCH LINE SEE SHEET 7

WALNUT ST

ELM ST

PROPOSED CURB RAMP

PROPOSED HIGH VISIBILITY CROSSWALK

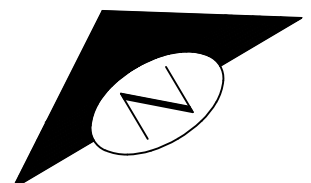
20' PARKING BAN ADJACENT TO DRIVEWAY

NO CROSSWALKS AT INTERSECTION DUE TO DRIVEWAY LOCATIONS

PROPOSED TEMPORARY WALKWAY DUE TO DEFICIENT SIDEWALK WIDTH

PROPOSED FLOATING BUMP-OUTS

POSSIBLE LOCATION OF ACCESSIBLE PARKING SPOT



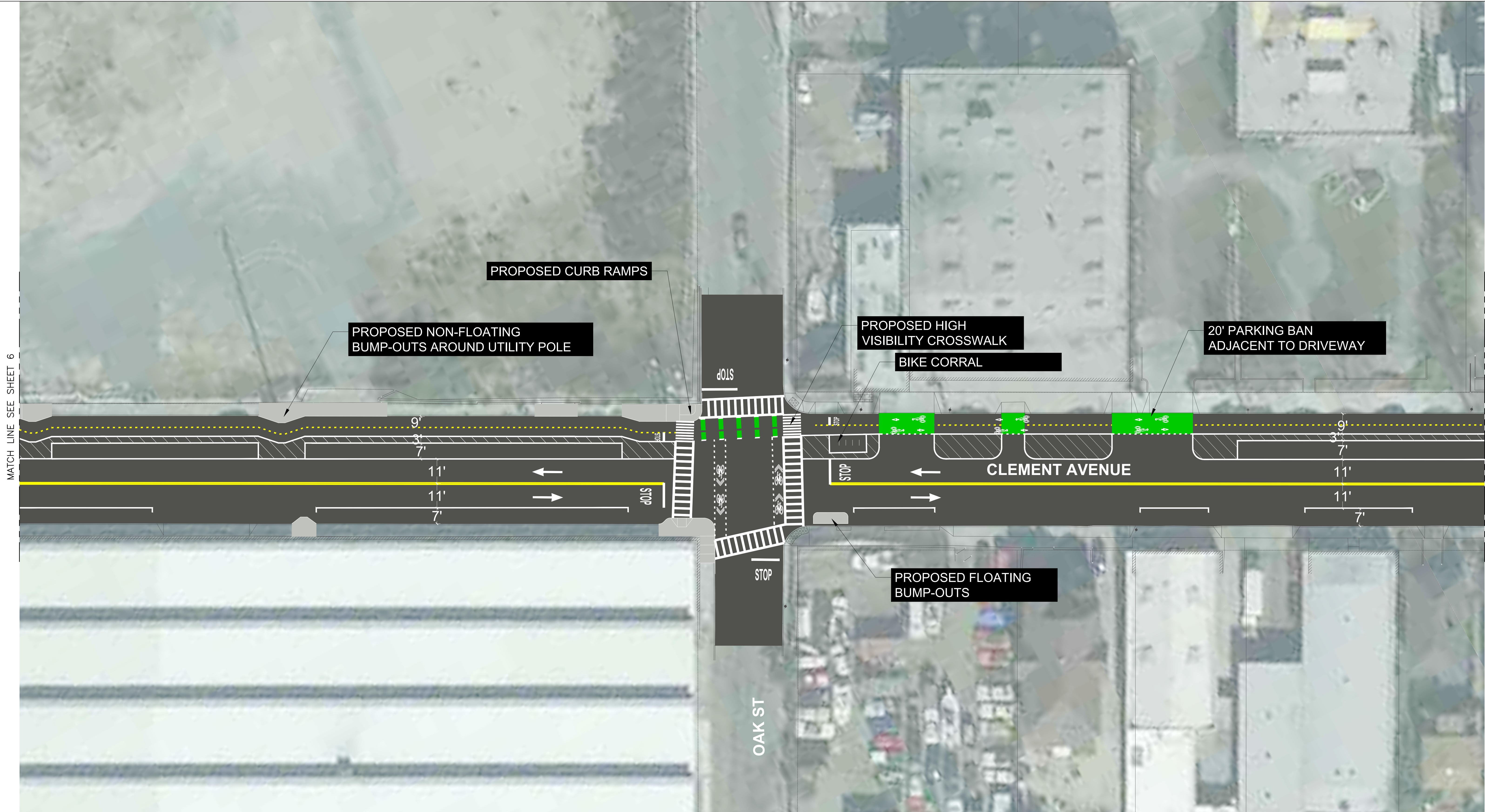
PRELIMINARY DRAFT - NOT FOR CONSTRUCTION

PROPOSED SIDEWALK CONSTRUCTION



CLEMENT AVENUE SAFETY IMPROVEMENTS PROJECT
 TWO-WAY PROTECTED BIKE LANE CONCEPTUAL DESIGN OPTION
 SHEET 6/11
 MAY 2019

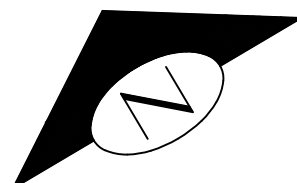
C:\cdmex\smth\0342379\Clement Ave Two Way PBL.dwg
 May-24-19 9:29am



MATCH LINE SEE SHEET 6

MATCH LINE SEE SHEET 8

PROPOSED SIDEWALK CONSTRUCTION



PRELIMINARY DRAFT - NOT FOR CONSTRUCTION



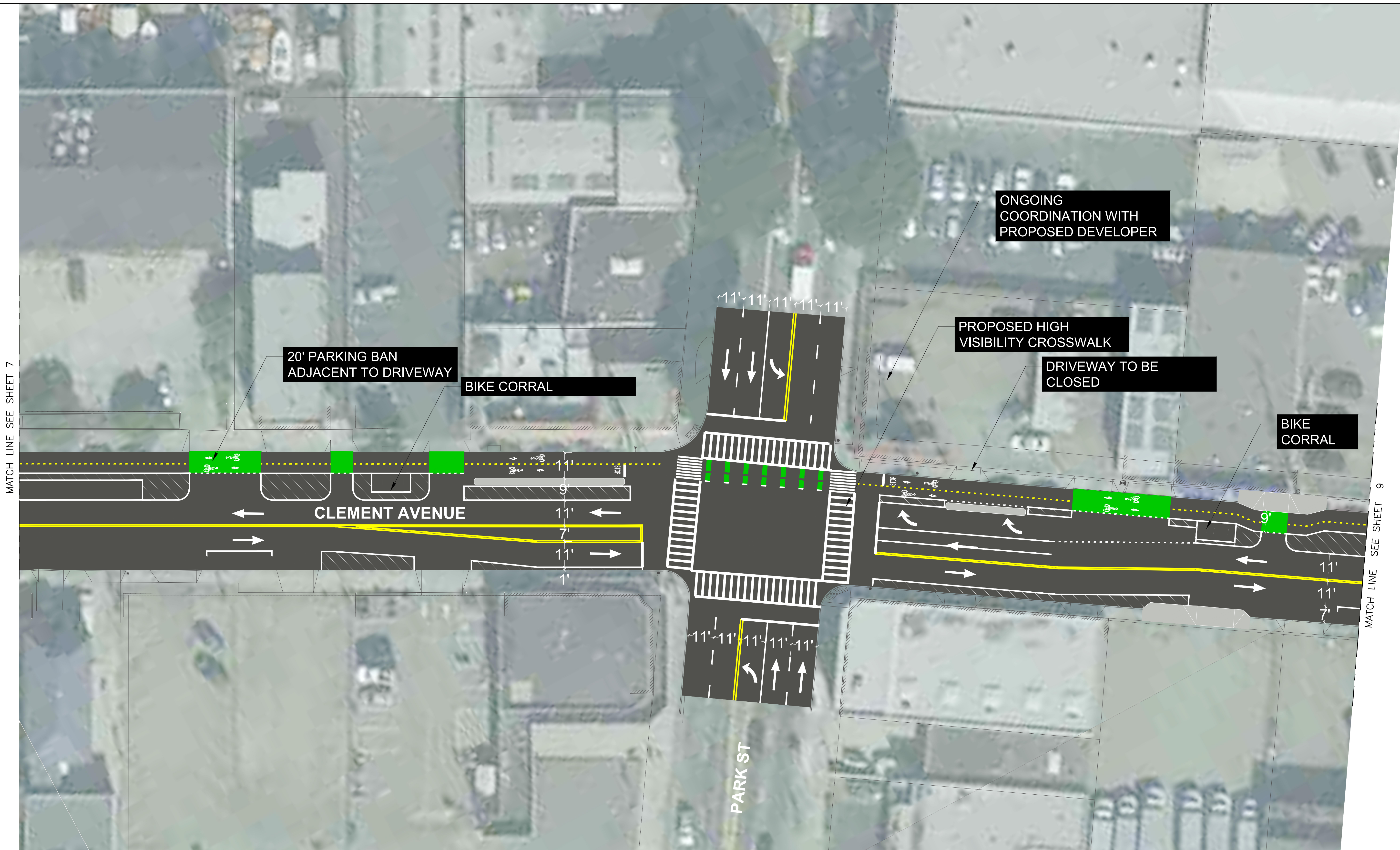
CLEMENT AVENUE SAFETY IMPROVEMENTS PROJECT

TWO-WAY PROTECTED BIKE LANE CONCEPTUAL DESIGN OPTION

SHEET 7/11

MAY 2019

C:\cdmex\smith\0342379\Clement Ave Two Way PBL.dwg
May-24-19 9:30am

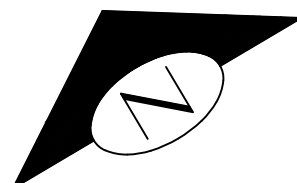


MATCH LINE SEE SHEET 7

MATCH LINE SEE SHEET 9

PRELIMINARY DRAFT - NOT FOR CONSTRUCTION

■ PROPOSED SIDEWALK CONSTRUCTION



CLEMENT AVENUE SAFETY IMPROVEMENTS PROJECT

TWO-WAY PROTECTED BIKE LANE CONCEPTUAL DESIGN OPTION

SHEET 8/11

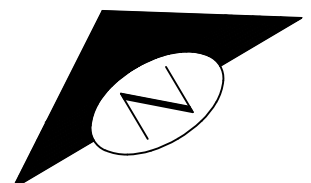
MAY 2019

C:\cdmex\smth\cd0342379\Clement Ave Two Way PBL.dwg
May-24-19 9:30am



PRELIMINARY DRAFT - NOT FOR CONSTRUCTION

■ PROPOSED SIDEWALK CONSTRUCTION



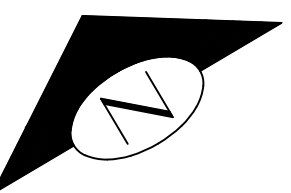
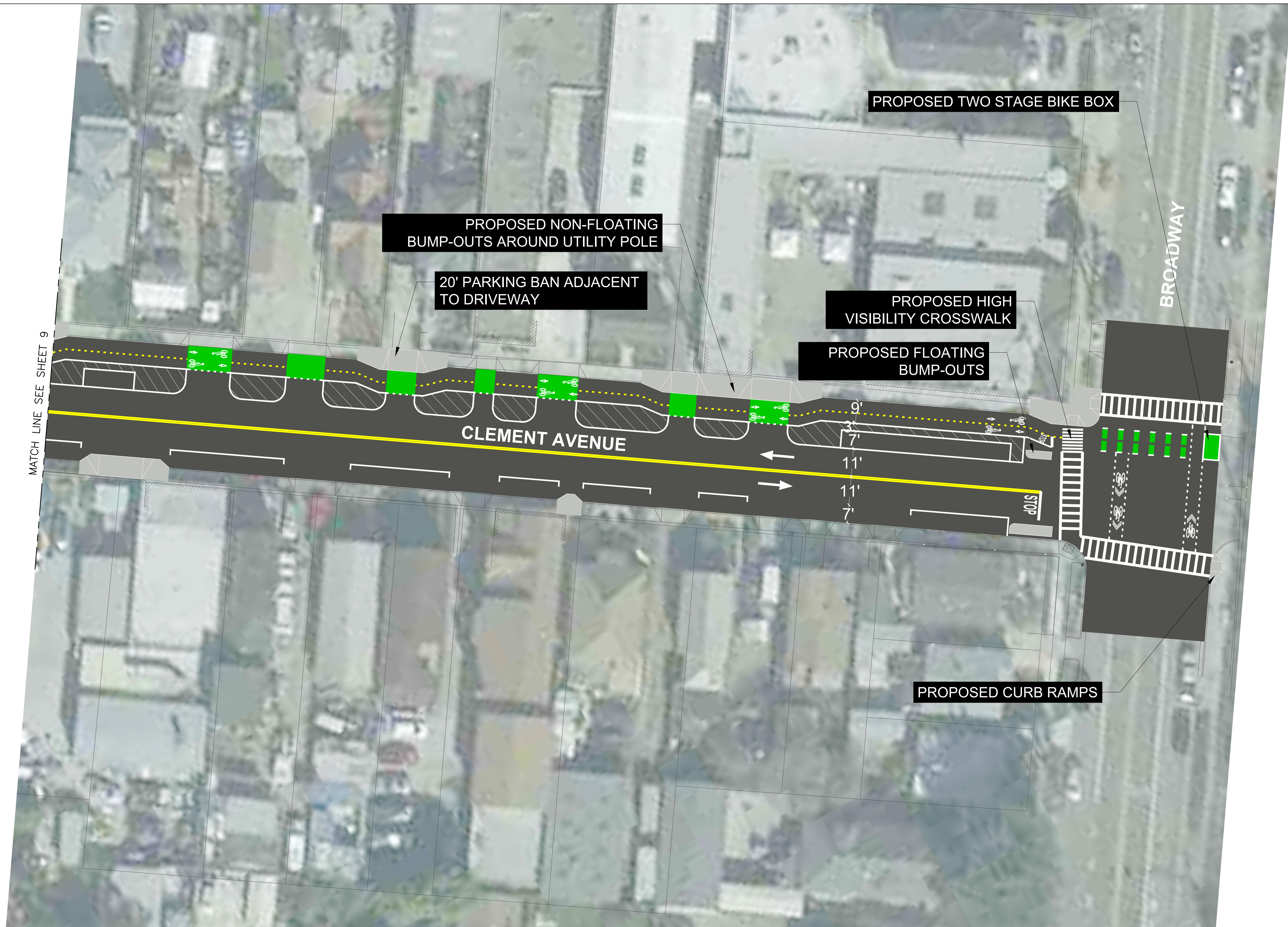
CLEMENT AVENUE SAFETY IMPROVEMENTS PROJECT

TWO-WAY PROTECTED BIKE LANE CONCEPTUAL DESIGN OPTION

SHEET 9/11

MAY 2019

C:\cdmex\smith\0342379\Clement Ave Two Way PBL.dwg
May-24-19 9:30am



PRELIMINARY DRAFT - NOT FOR CONSTRUCTION

■ PROPOSED SIDEWALK CONSTRUCTION



CLEMENT AVENUE SAFETY IMPROVEMENTS PROJECT

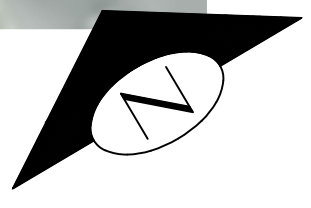
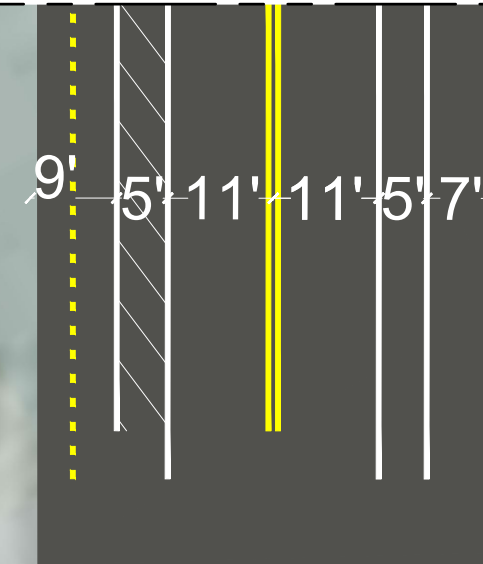
TWO-WAY PROTECTED BIKE LANE CONCEPTUAL DESIGN OPTION

SHEET 10/11

MAY 2019

C:\cdmex\smith\cd0342379\Clement Ave Two Way PBL.dwg
May-24-19 9:30am

MATCH LINE SEE SHEET 1



PRELIMINARY DRAFT - NOT FOR CONSTRUCTION

■ PROPOSED SIDEWALK CONSTRUCTION



CLEMENT AVENUE SAFETY IMPROVEMENTS PROJECT

TWO-WAY PROTECTED BIKE LANE CONCEPTUAL DESIGN OPTION

SHEET 11/11

MAY 2019

C:\cdmex\smith\0342379\Clement Ave Two Way PBL.dwg
May-24-19 9:31am