

February 15, 2023



Lincoln Avenue - Marshall Way - Pacific Avenue

Corridor Improvement Project

Agenda

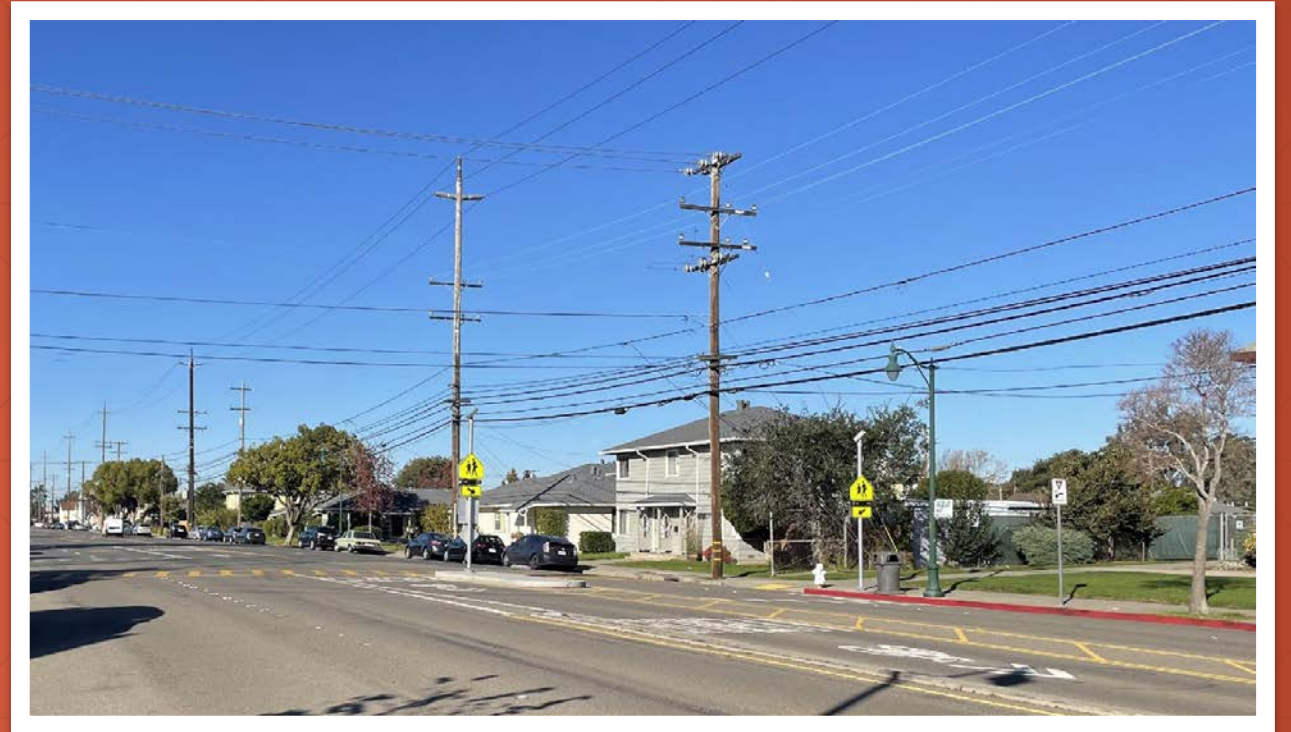
- Project background
- Community input
- Phased approach to concept
- Discussion & next steps



Oak St. & Lincoln Ave. intersection, looking west.



Park St. & Lincoln Ave. intersection, looking east.



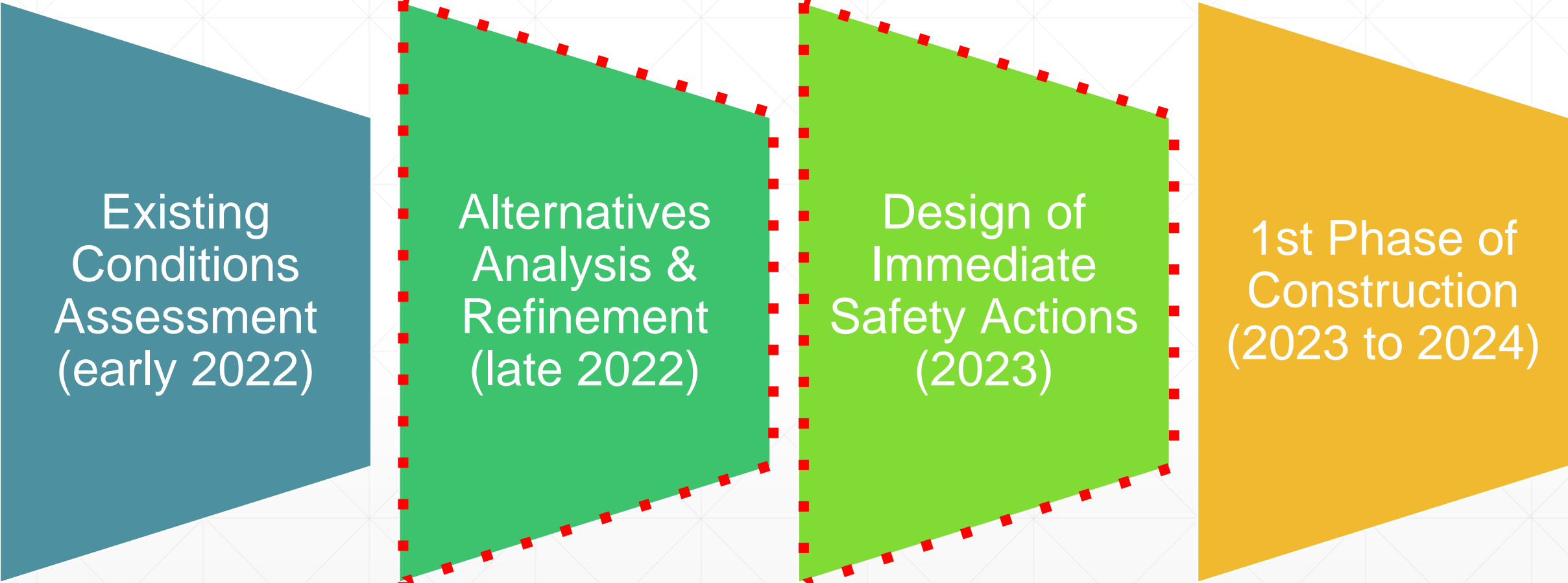
Project Background

Project Goals

- Promote safety by prioritizing Vision Zero
 - Improve mobility for all users, including AC Transit buses
 - Improve pavement for better operations, user experience, & reduced maintenance
 - Provide flood reduction & landscaping
 - Reduce greenhouse gas emissions by improving traffic flow & shifting to walking, bicycling & transit
 - Comply with City plans & policies
-



Project Workflow



The diagram illustrates a four-stage project workflow. It consists of four chevron-shaped boxes arranged horizontally from left to right. The first box is solid blue, the second is green with a red dashed border, the third is light green with a red dashed border, and the fourth is solid yellow. A thin red horizontal line is positioned below the boxes.

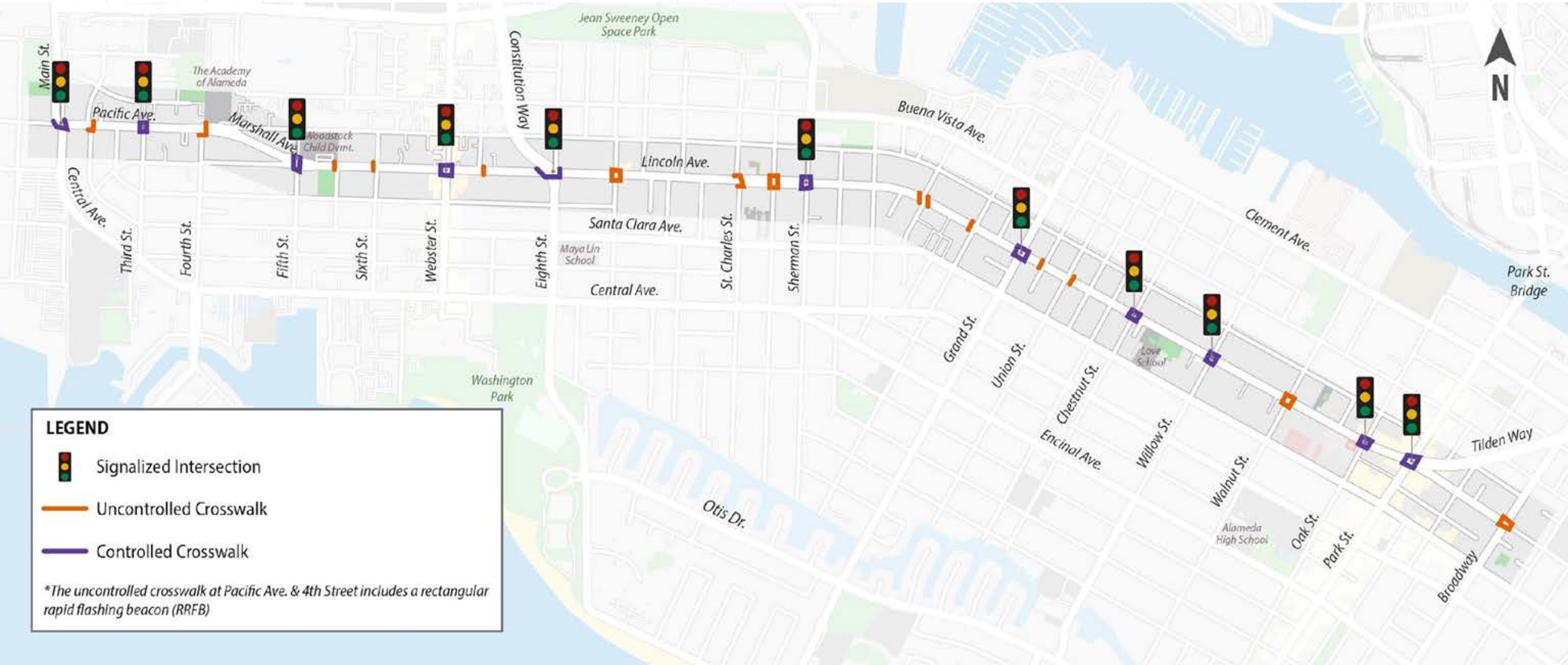
Existing
Conditions
Assessment
(early 2022)

Alternatives
Analysis &
Refinement
(late 2022)

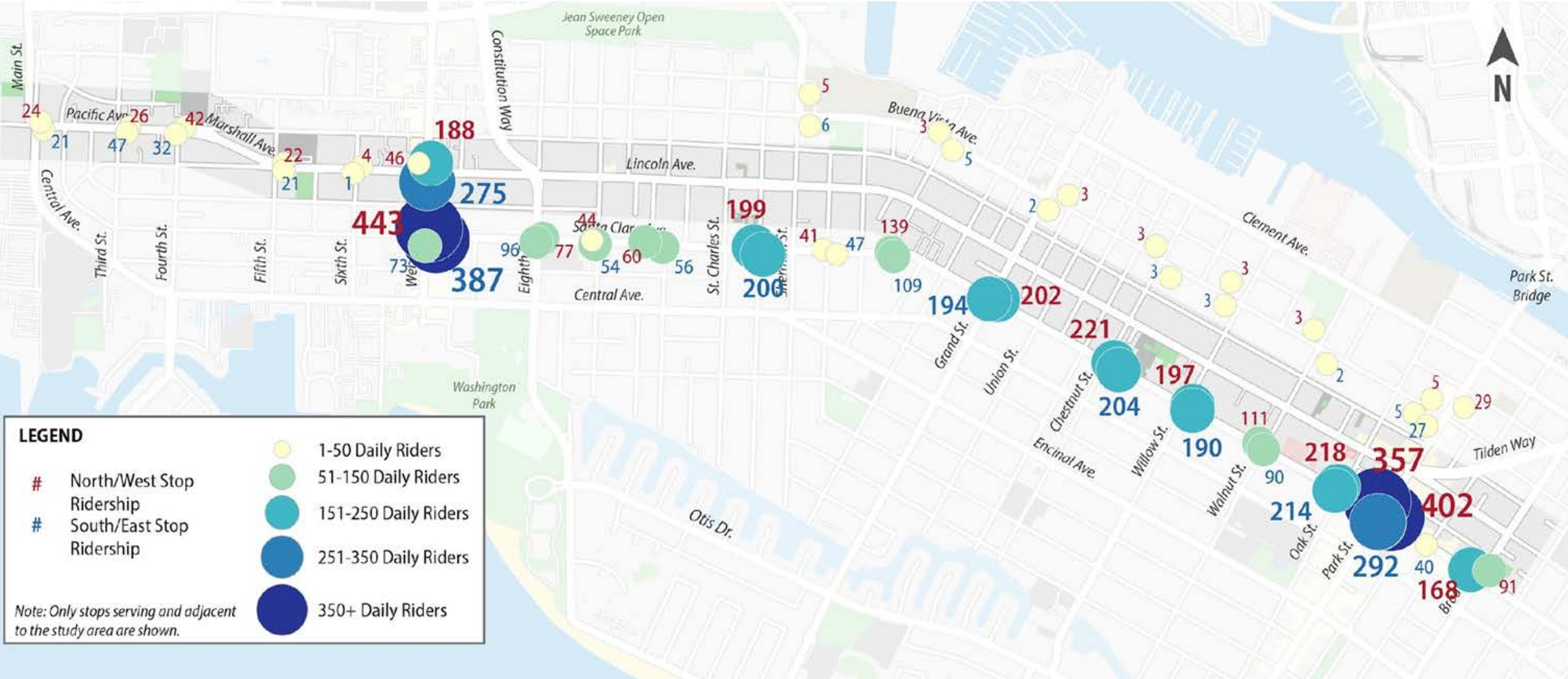
Design of
Immediate
Safety Actions
(2023)

1st Phase of
Construction
(2023 to 2024)

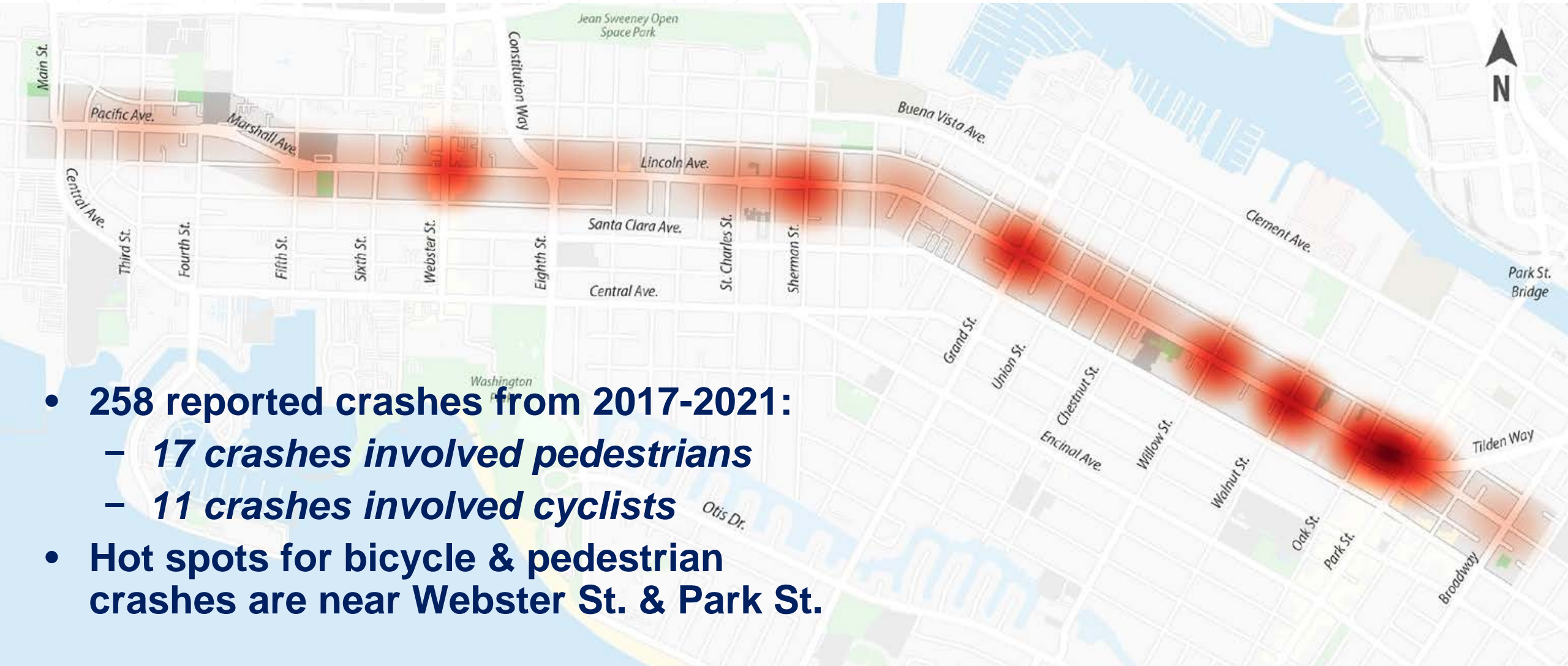
The Corridor is 3.1 Miles Long



Substantial Bus Use Generates Pedestrian Travel



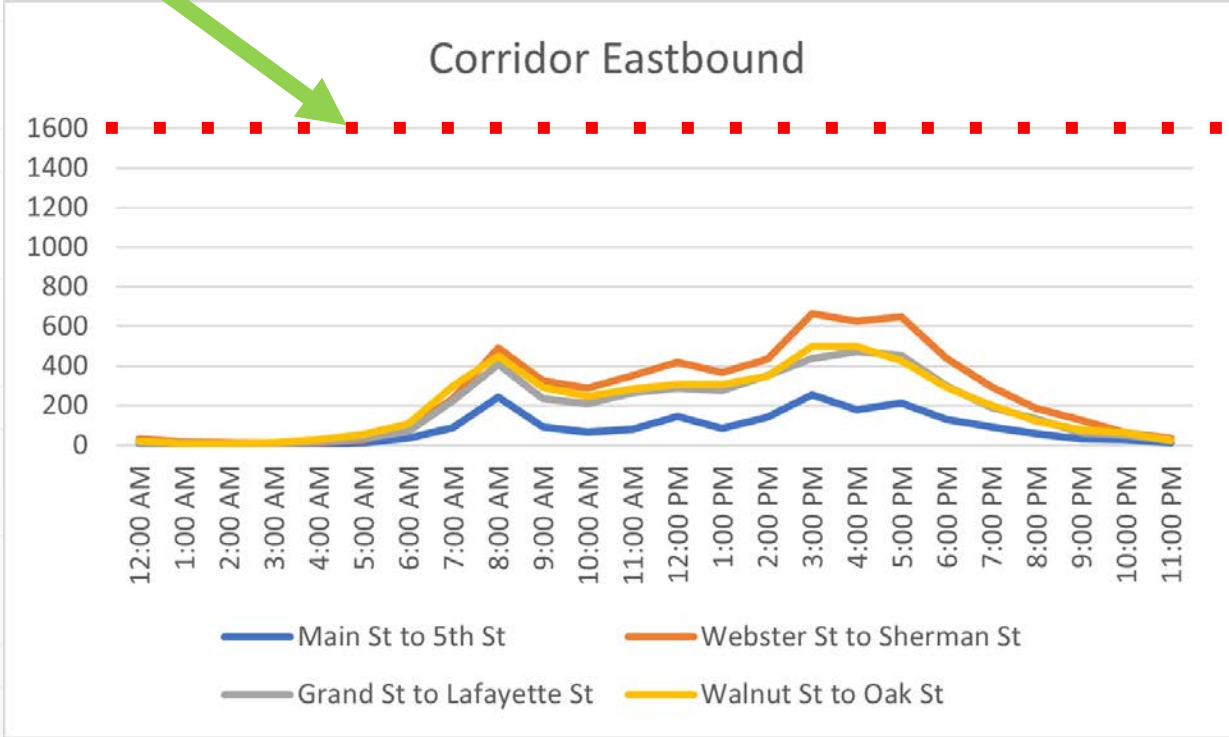
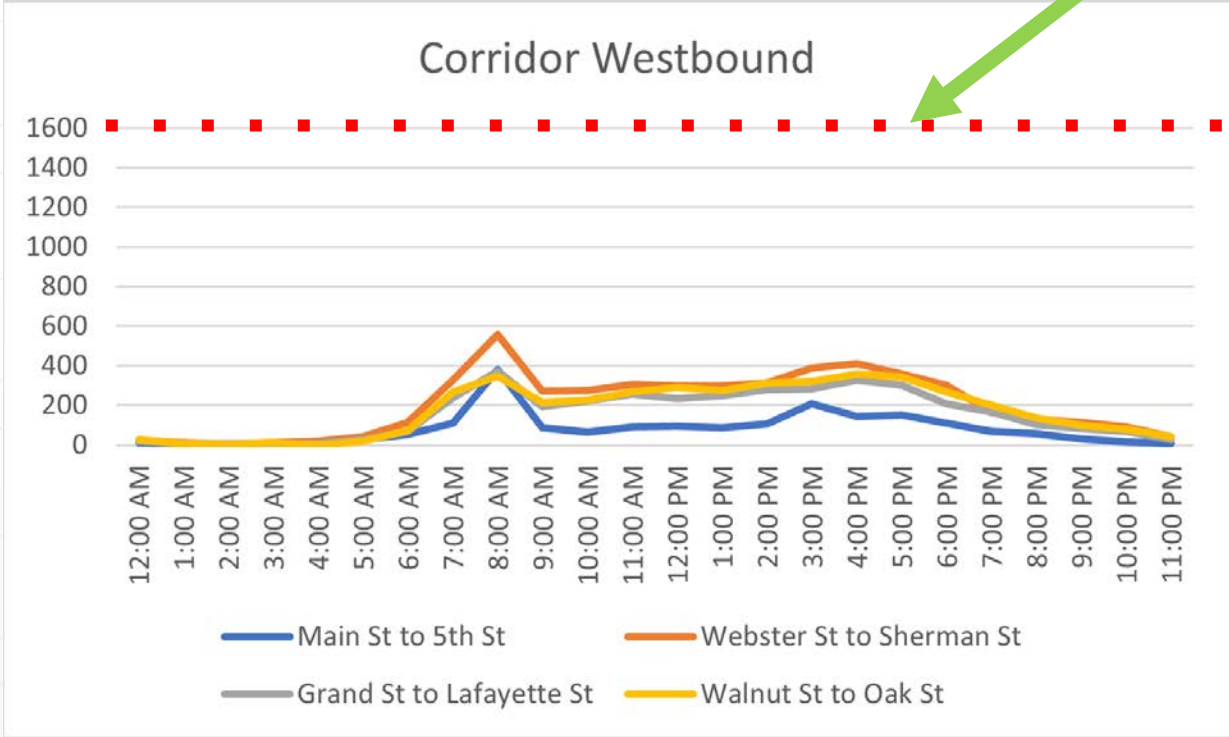
Crash Hot Spots – 258 Reported Crashes in 5 Years

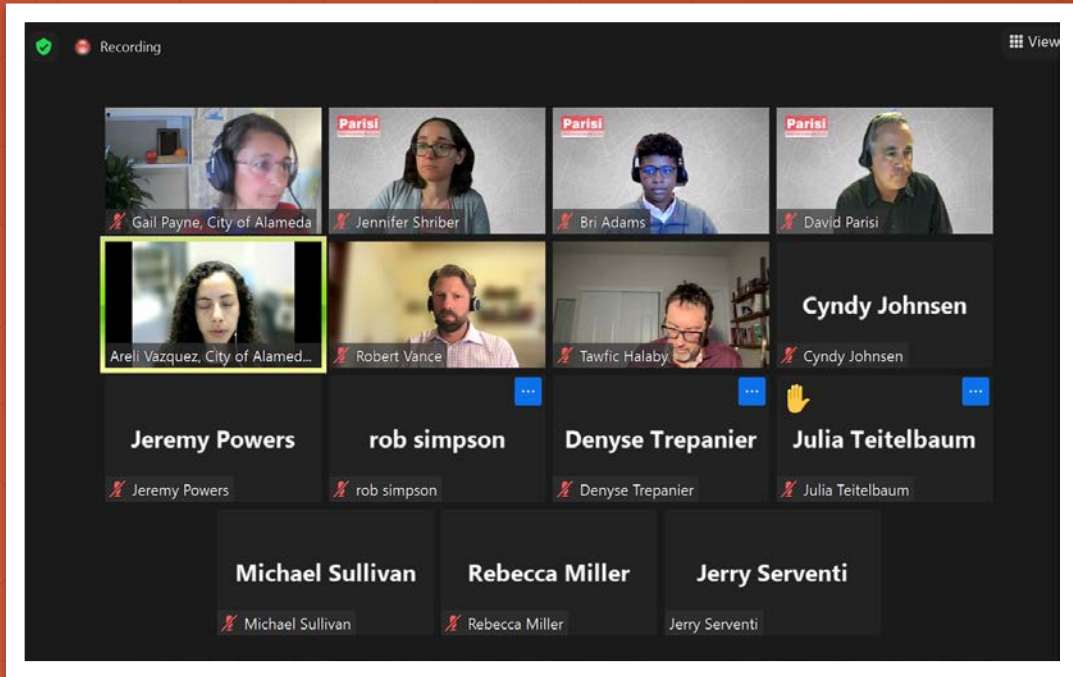


- **258 reported crashes from 2017-2021:**
 - **17 crashes involved pedestrians**
 - **11 crashes involved cyclists**
- **Hot spots for bicycle & pedestrian crashes are near Webster St. & Park St.**

Road Capacity is About 3 Times Higher Than Demand

The roadway can currently accommodate up to 1,600 vehicles per hour in each direction

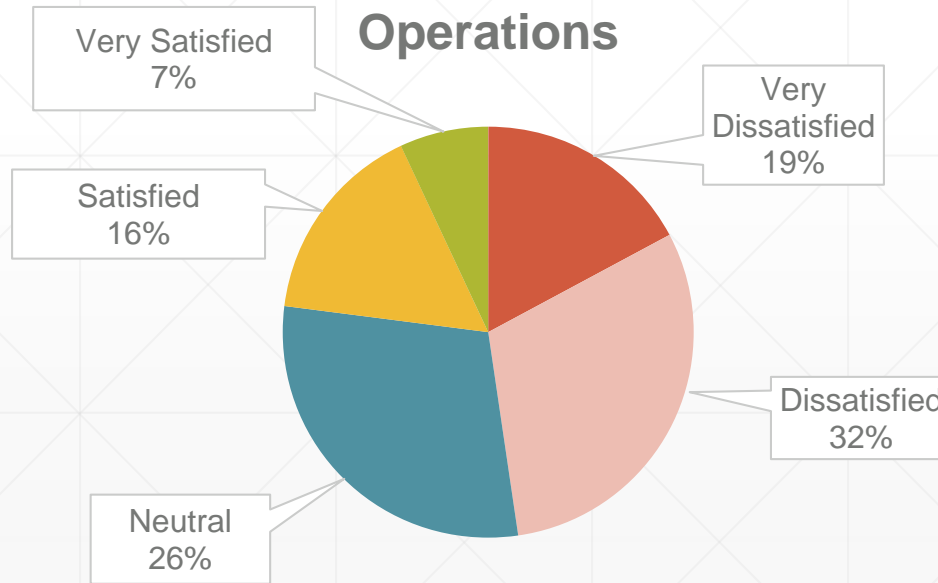
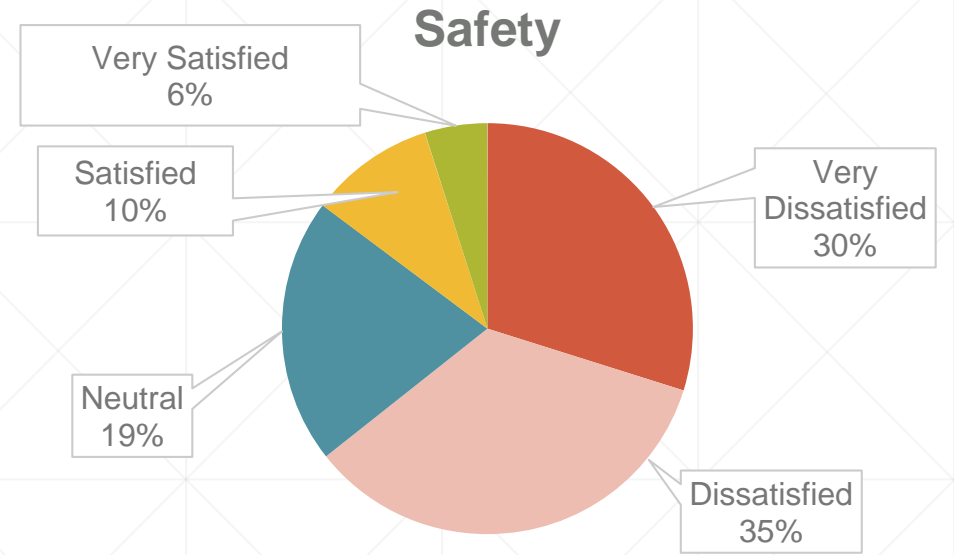




Community Input

Community Input

- Street safety concern reports
- Two online surveys
- Two workshops
- Two open houses





Immediate
Safety Actions

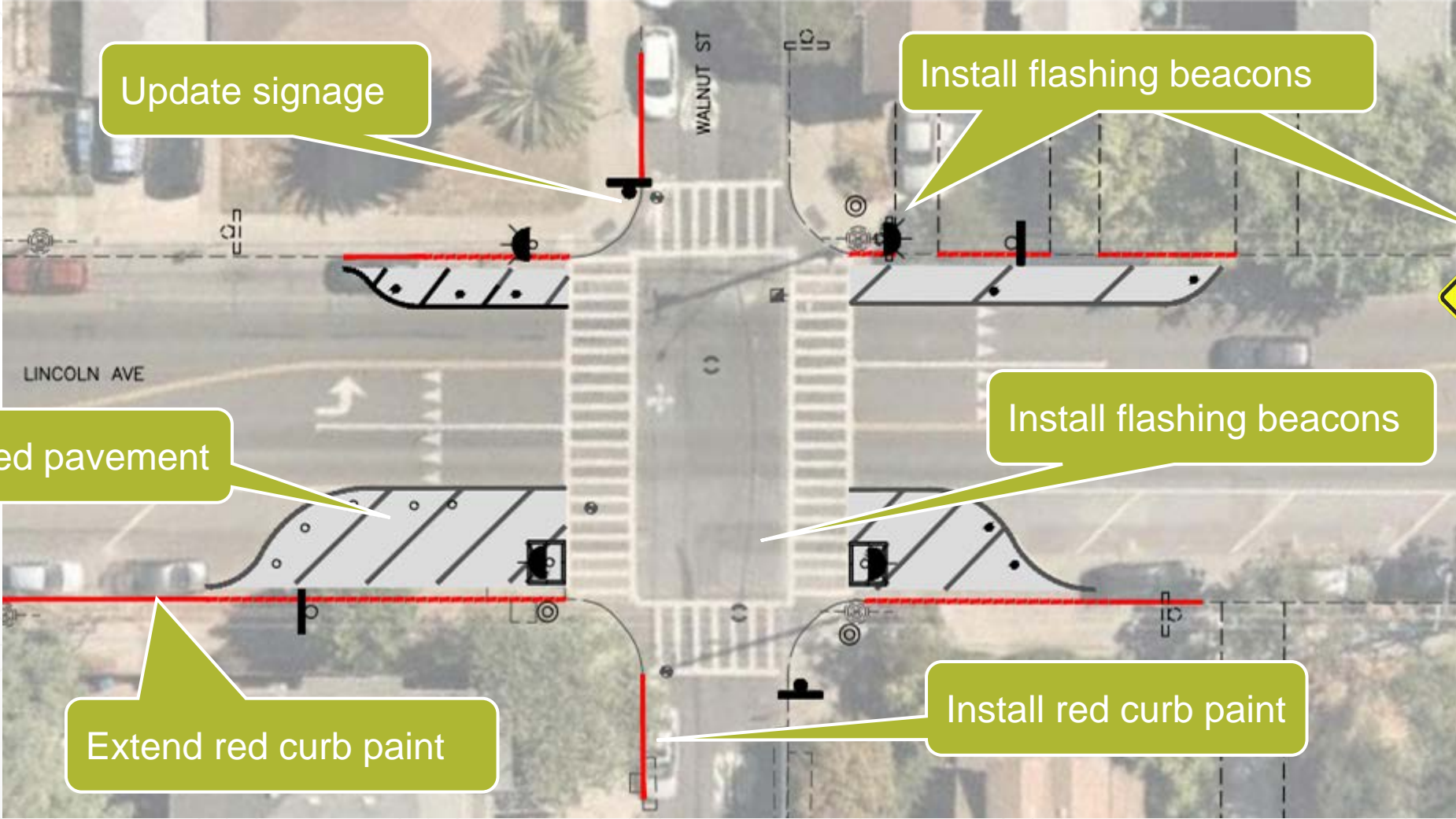
Ultimate
Corridor Vision

Phased Approach to Concept

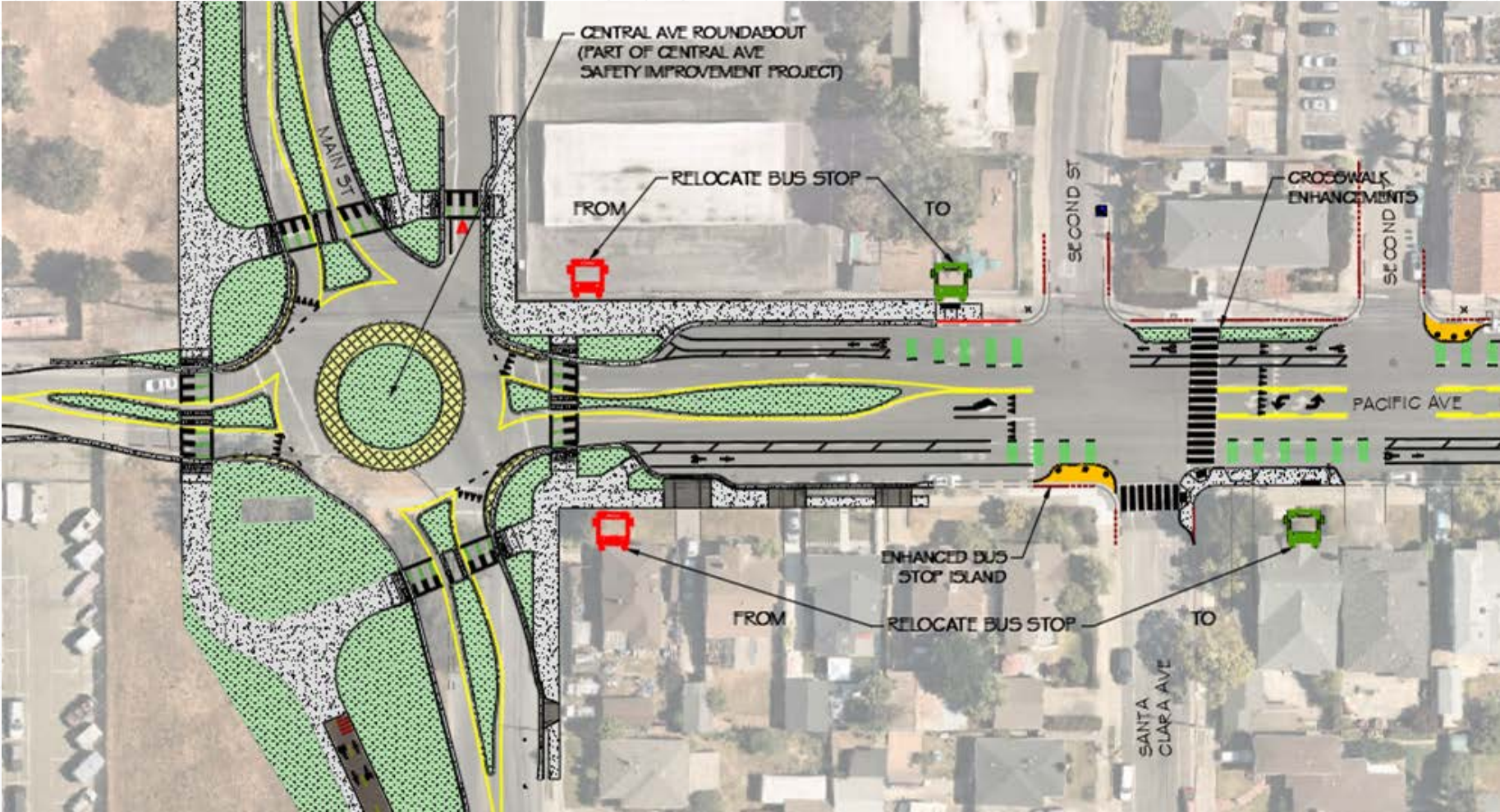
Ultimate Vision – Focus on Safety Enhancements



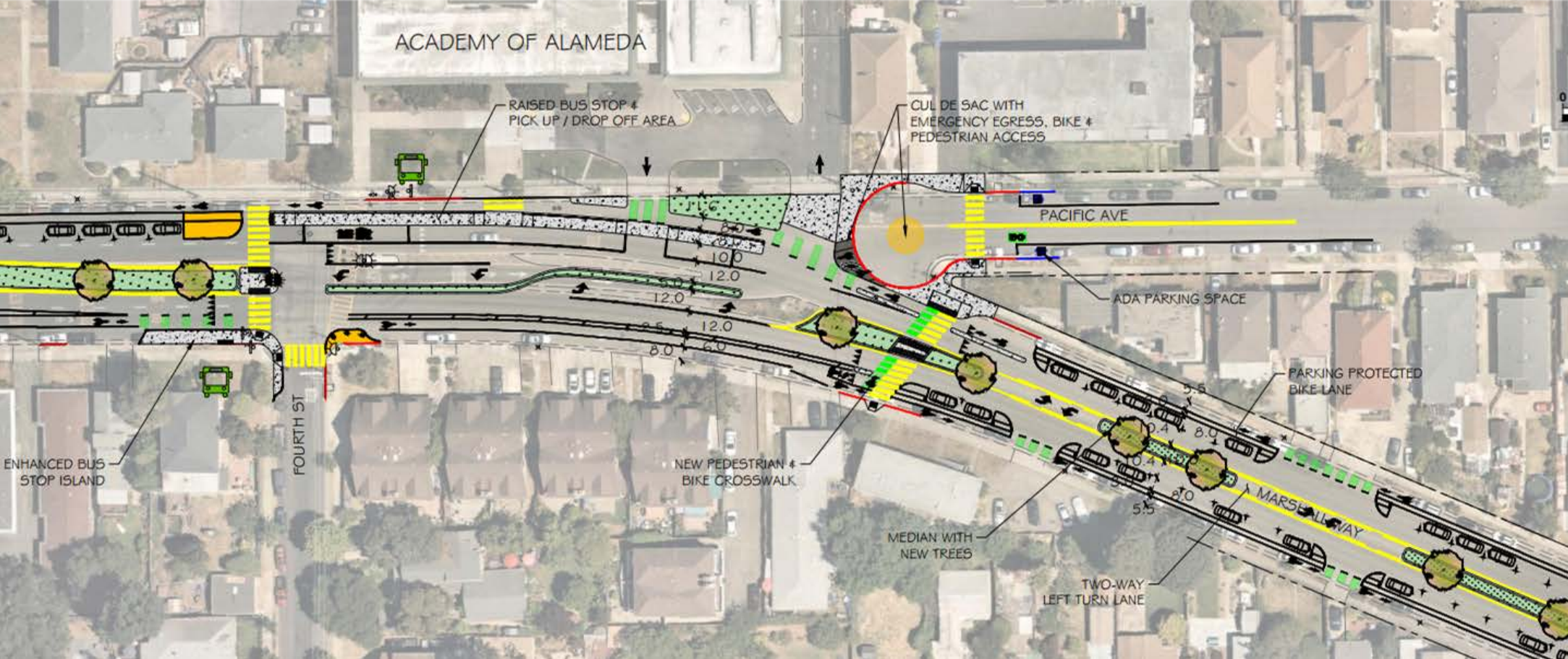
Immediate Safety Improvements at Walnut Street



Roundabout at Central Avenue / Main Street



Multimodal Enhancements Near Academy of Alameda



Pedestrian Enhancements Throughout Corridor



Pacific Avenue – Existing



Pacific Avenue – Proposed



Marshall Way – Existing



Marshall Way – Proposed



Lincoln Ave. West of Morton St. - Existing



Lincoln Ave. West of Morton St. – Proposed



Lincoln Ave. East of Morton St. - Existing



Lincoln Ave. East of Morton St. – Proposed



Lincoln Ave. Near Library – Existing



Lincoln Ave. Near Library – Proposed



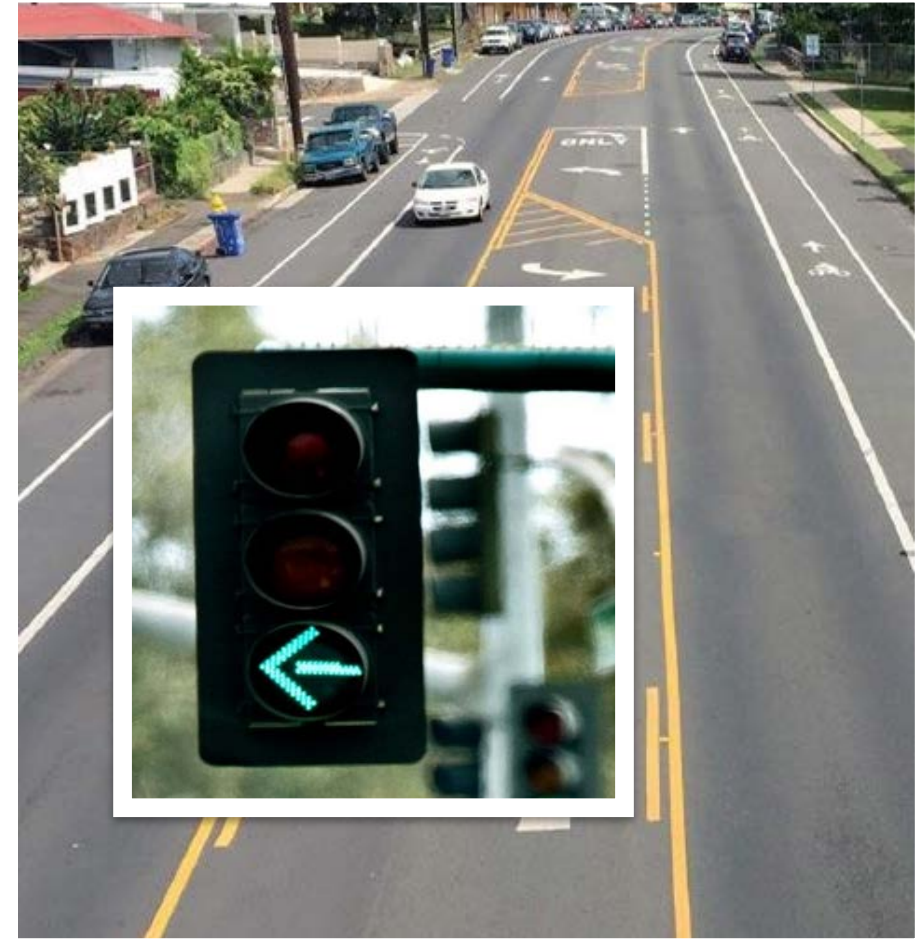
Lincoln Ave. East of Park St. – Existing



Lincoln Ave. East of Park St. – Proposed



Safety Enhancements: Left Turns & Traffic Signals



Roundabouts at 5th & at Wilma Chan Way/8th



Lincoln Ave. & Fifth St. intersection



Lincoln Ave. & Wilma Chan Way intersection

Safer Traffic Operations

- Accounts for 2040 traffic projections
- Enough capacity with road diet; traffic diversions not expected
- Lower delays and service level improvements at roundabouts
- Left turns at intersections result in negligible delays – and improved safety

Lincoln Avenue - 2040 + Project Conditions + Traffic Signal Upgrades			Delay (s) and LOS			
Intersection			AM		PM	
			Overall		Overall	
1	Pacific / Central / Main	Roundabout	16.5	C	7.4	A
13	Third	Traffic Signal	6.2	A	6.4	A
2	Fourth	TWSC	1.4	A	1.1	A
3	Marshall / Fifth	Roundabout	8.2	A	7.8	A
4	Webster	Traffic Signal	47.8	D	46	D
5	Constitution	Roundabout	12.7	B	45.1	D
6	Sherman	Traffic Signal	11.9	B	18.6	B
7	Grand	Traffic Signal	18.3	B	30.5	C
8	Chestnut	Traffic Signal	19.3	B	12.4	B
9	Willow	Traffic Signal	14.8	B	14.4	B
10	Walnut	TWSC	3.5	A	4.8	A
14	Oak	Traffic Signal	6.1	A	6.3	A
11	Park/ Tilden	Traffic Signal	19.3	B	32.9	C
12	Broadway	TWSC	3.3	A	20.9	C

Discussion & Next Steps

Next Steps

- Focus group meetings:
 - February through April
 - Refine corridor concept
 - Pending ATC recommendation:
 - City Council on April 4
 - Further design work
 - Seek grant funding
 - Complete immediate work at Walnut Street
 - Implement project considering phased approach
-

February 15, 2023



Lincoln Avenue - Marshall Way - Pacific Avenue

www.alamedaca.gov/LincolnMarshallPacific

Gail Payne – gpayne@alamedaca.gov – 510-747-6892