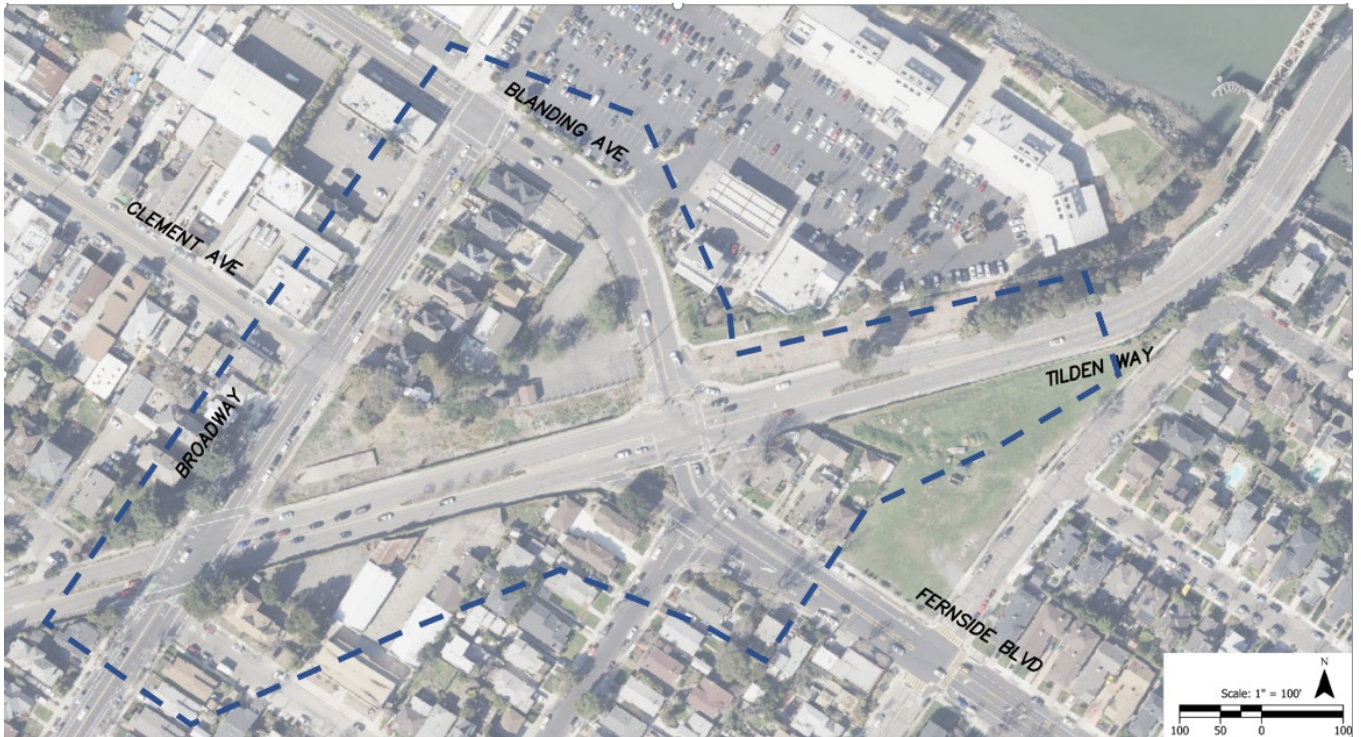


# May 2022 Survey - Clement/Tilden Improvement Project



How do you typically use Clement Avenue/Tilden Way? (multiple options) (Select 1 or more options)

- Private vehicle
- Walk
- Bicycle
- Ride a bus
- Other

Other

How satisfied are you with the safety of the Clement/Tilden project area? (Select 1 option)

- 1: Very Dissatisfied
- 2: Dissatisfied
- 3: Neutral
- 4: Satisfied
- 5: Very Satisfied

**How satisfied are you with how the Clement/Tilden project area operates? (Select 1 option)**

- 1: Very Dissatisfied
- 2: Dissatisfied
- 3: Neutral
- 4: Satisfied
- 5: Very Satisfied

Complete this field if you made a selection that includes 'Walk' in : *How do you typically use Clement Avenue/Tilden Way? (multiple options)*

**Walking: How satisfied are you with the experience of walking through the project area? (Select 1 option)**

- 1: Very Dissatisfied
- 2: Dissatisfied
- 3: Neutral
- 4: Satisfied
- 5: Very Satisfied

Complete this field if you made a selection that includes 'Private vehicle' in : *How do you typically use Clement Avenue/Tilden Way? (multiple options)*

**Driving: How satisfied are you with the experience of driving through the project area? (Select 1 option)**

- 1: Very Dissatisfied
- 2: Dissatisfied
- 3: Neutral
- 4: Satisfied
- 5: Very Satisfied

Complete this field if you made a selection that includes 'Bicycle' in : *How do you typically use Clement Avenue/Tilden Way?*  
(multiple options)

**Bicycling: How satisfied are you with the experience of bicycling through the project area? (Select 1 option)**

- 1: Very Dissatisfied
- 2: Dissatisfied
- 3: Neutral
- 4: Satisfied
- 5: Very Satisfied

Complete this field if you made a selection that includes 'Ride a bus' in : *How do you typically use Clement Avenue/Tilden Way?*  
(multiple options)

**Riding Transit: How satisfied are you with the experience of taking the bus through the project area? (Select 1 option)**

- 1: Very Dissatisfied
- 2: Dissatisfied
- 3: Neutral
- 4: Satisfied
- 5: Very Satisfied

Complete this field if you made a selection that includes 'Other' in : *How do you typically use Clement Avenue/Tilden Way?*  
(multiple options)

**Other: How satisfied are you with your "other" experience through the project area? (Select 1 option)**

- 1: Very Dissatisfied
- 2: Dissatisfied
- 3: Neutral
- 4: Satisfied
- 5: Very Satisfied

**Do you have any comments that you would like to share with us?**

If you are interested in updates about the project, please provide your email below, send an email to [gpayne@alamedaca.gov](mailto:gpayne@alamedaca.gov) or go to [www.alamedaca.gov/Subscribe](http://www.alamedaca.gov/Subscribe)

---

## Optional Demographic Data Questions

**Where do you live or work? (Select 1 option)**

- West end of Alameda (west of Webster Street)
- Central island (Webster Street to Park Street)
- East end (east of Park Street)
- Bay Farm Island
- Other

**Do you have children attending schools in Alameda? (Select 1 option)**

- Yes
- No

**Are you 65 years old or older? (Select 1 option)**

- Yes
- No

**Do you own or rent your home? (Select 1 option)**

- Rent
- Own

**What race or ethnicity do you identify with? Please check all that apply: (Select 1 or more options)**

- American Indian, First Nation, Alaska Native, Indigenous
- Asian, Asian American
- Black, African American
- Hispanic, Latino/a/x
- Middle Eastern
- Multi-ethnic/multi-racial
- Pacific Islander, Native Hawaiian
- White, Caucasian
- Prefer not to answer
- Other

**Prefer to self describe**

**What is your gender identity? (Select 1 option)**

- Female
- Male
- Transgender female
- Transgender male
- Non-binary/gender-fluid/non-conforming
- Prefer not to answer
- Not listed

---

*End of form*