

Status Report on Transportation

September
2021

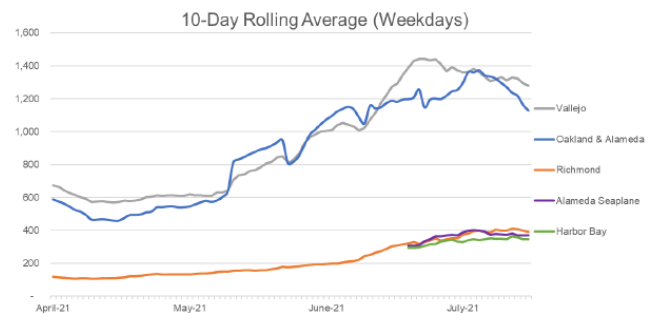


Quick Facts: Transit Daily Boardings

AC Transit:

Line	2019	2020	2021
19	706	308	177
20	2,707	1,173	1,221
21	1,653	797	872
51A	9,359	2,428	3,503
96	1,455	553	701
O	1,883	327	575
OX	571	0	0
W	574	0	39
356	14	0	0
631	181	0	0
663	60	0	0
687	209	0	0
851	119	58	55
Total	19,491	5,644	7,143

WETA:

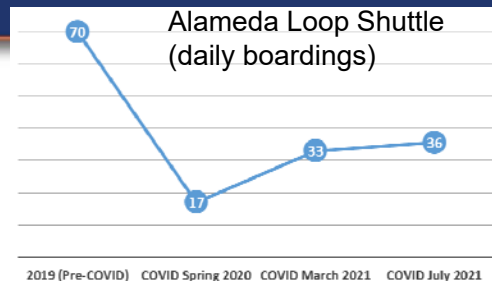


2



Quick Facts (cont.)

- Alameda Loop Shuttle reduced usage (see inset)



- 1.6 miles of **bikeways** (2021) totaling 50+ miles citywide

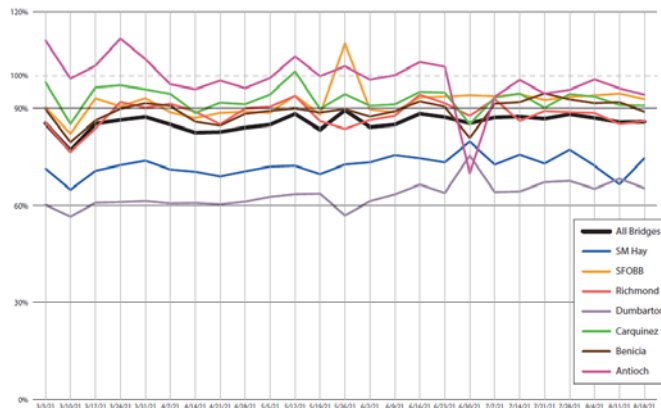
Year	Bikeways (miles)
As of 2017	44.2
Added in 2018	1.4
Added in 2019	1.9
Added in 2020	1.2
Added in 2021 (as of August)	1.6
Totals	50.3



3

Quick Facts: Roadways

- Most bridges at 90 percent volumes compared to pre-covid



4

Quick Facts: Safety

- Collision Comparison (All Modes)

	Average 2009- 2018			2019	2020	2021 (Jan- June)
Killed	1.9	1	4	2		
Severely injured	10	6	5	3		
All injuries	221	273	167	80		



Quick Facts: Safety (cont.)



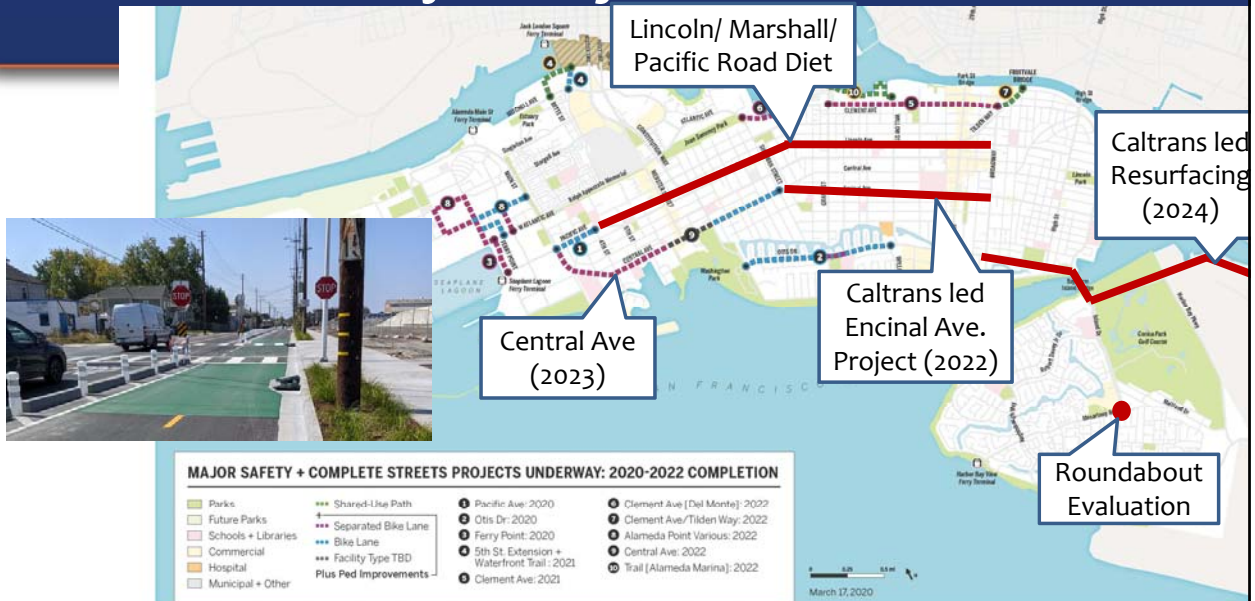
Status: Key Projects (cont.)

- Vision Zero Projects
 - Post-collision visits and communications
 - Intersection Safety:
 - Grand St, Central Ave, Main St & Otis Dr (**Done**)
 - Lincoln Ave, Park St, Santa Clara Ave and Webster St (**fall 2021**)



7

Status: Key Projects

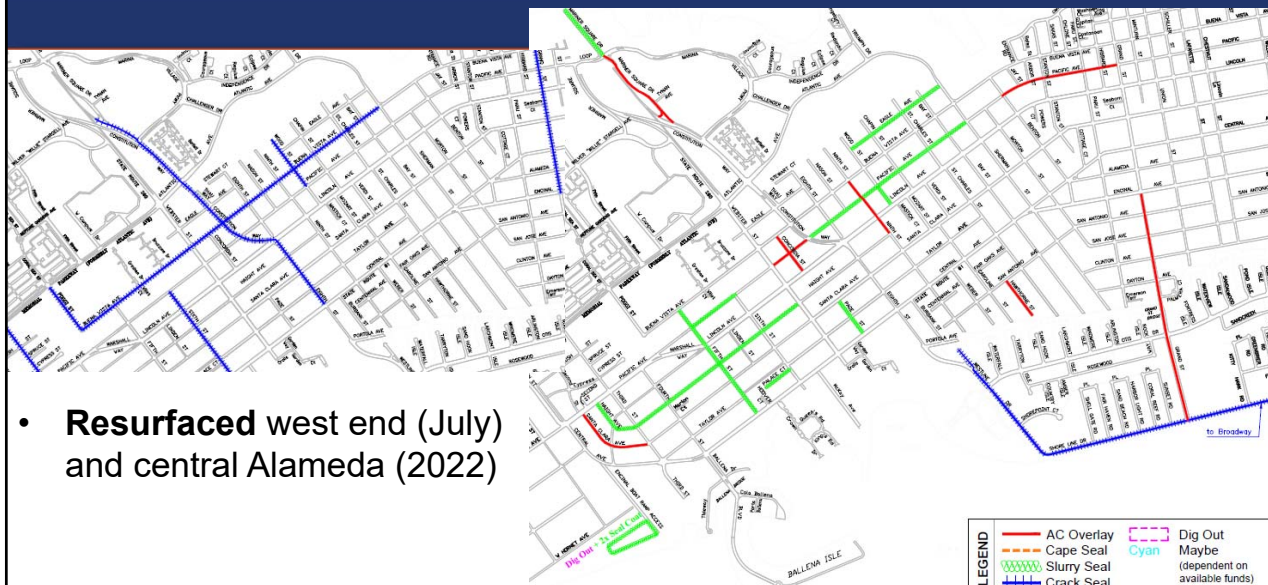


Status: Key Projects (cont.)



9

Status: Key Projects (cont.)



Status: Key Projects (cont.)

- **Commercial/Slow Streets**

- To support businesses
 - Restriped Park Street/Webster Street
 - Closed Alameda Avenue near Park Street
- To allow for more walking and bicycling
 - 4.5 miles of residential streets are closed to through traffic and more will be added in 2021
 - Will add Orion Street in Alameda Point – summer 2021
- Council extended through October 2021
- Webpages:

www.alamedaca.gov/CommercialStreets

www.SlowStreetsAlameda.org

11



Status: Transit

- **AC Transit**

- Pilot Seaplane Lagoon connector bus (Line 78) began in August
- Recovery Plan (2022)

- **WETA**

- Seaplane Shift in July
- Main Street Terminal



12

Status: Planning Efforts



- General Plan Update (late 2021)
- Vision Zero: Draft Plan (late 2021)
- Roundabouts Analysis (late 2021)
- Smart City Master Plan (early 2022)
- ATP: Draft Plan (2022)
- West End Bike/Ped Bridge RFP (2021)
- Adaptation Working Group (ongoing)



13

Status Report on Transportation

September 2021

Gail Payne – gpayne@alamedaca.gov

