

# Sea Changes on the Alameda-Oakland Waterfront, 1857-Present

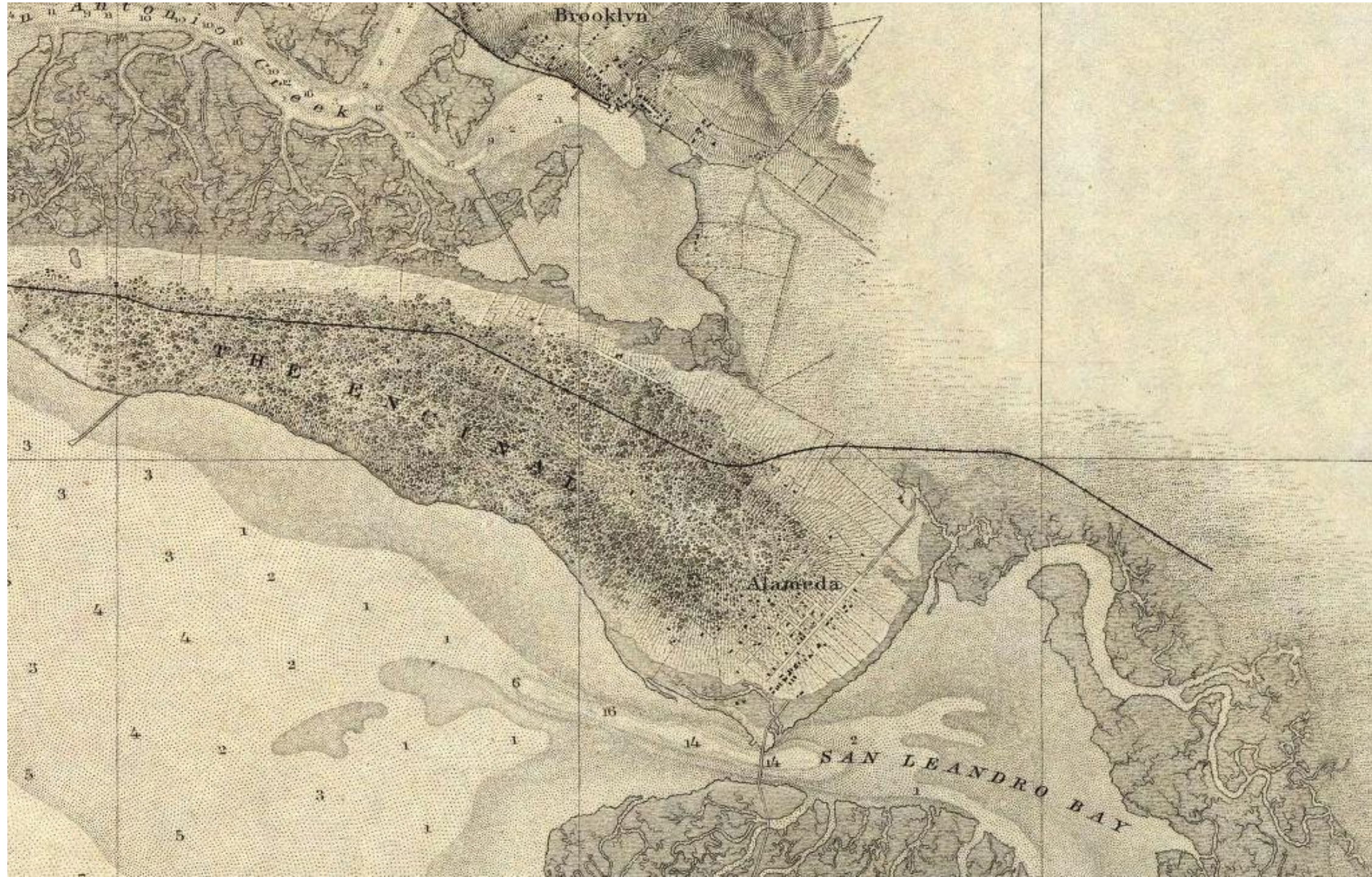
Mitchell Schwarzer



Cartographical Office  
Washington, D.C.  
Coast Survey  
1857









Fernside Oaks, Alameda  
Edgar A. Cohen Estate  
c. 1900



Alice & 12<sup>th</sup> Streets  
Oakland, c. 1890s



Transcontinental Railroad, 1869  
Oakland Point begets Long Wharf, 1870s

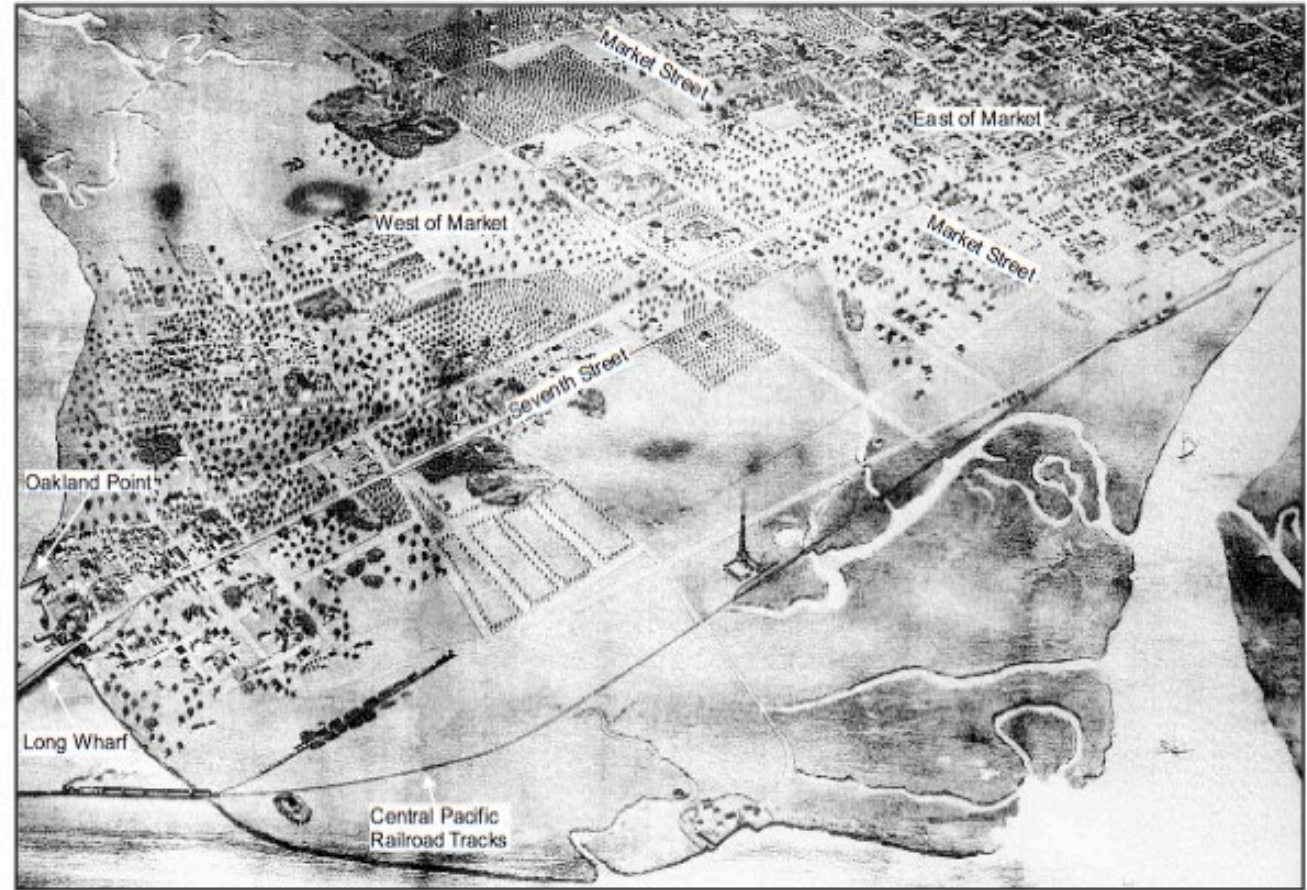


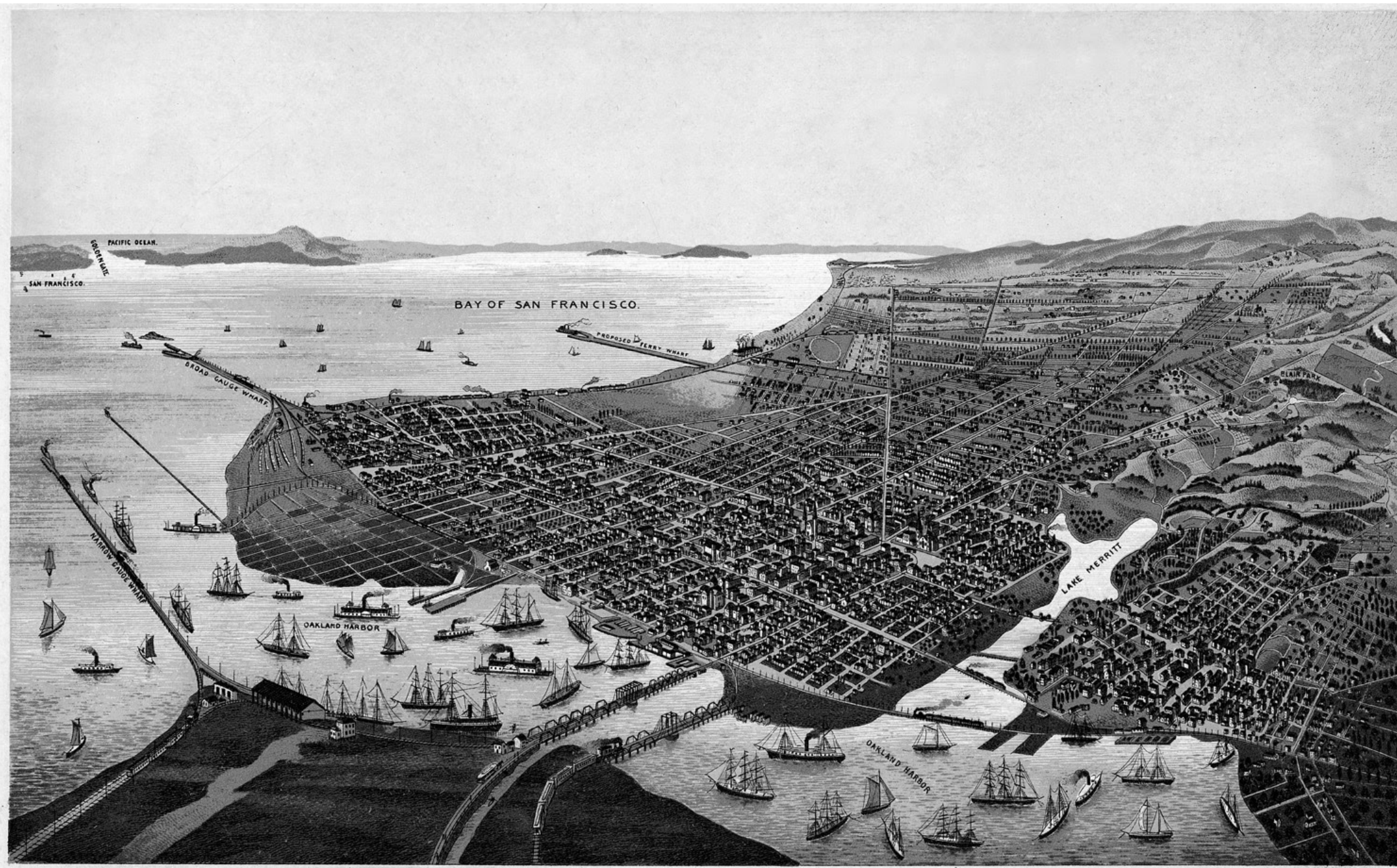
Figure 2.1. Snow & Roos Bird's-eye View of Oakland, 1870-1871, showing project area neighborhoods and landmarks. (Illustration courtesy of Bancroft Library)

West Oakland  
Southern Pacific Yards / Shredded Wheat Plant, 1915



Shredded Wheat Factory, 1445 and Union Streets, Oakland. This Niagara Falls man-  
ery located in Oakland against the opposition of Portland, Seattle, Tacoma,  
San Antonio and San Francisco. Metal work, glass and concrete factory four  
stories in height, occupying two city blocks. Has six concrete storage bins  
holding a total of 40,000 barrels of wheat. Total investment \$200,000. Capacity  
200,000 bushels.





From Litho Elliott Pub. Co. S.F.

BIRDS' EYE VIEW OF THE CITY OF OAKLAND, CALIFORNIA.

Rail/Ferry Moles  
c. 1910



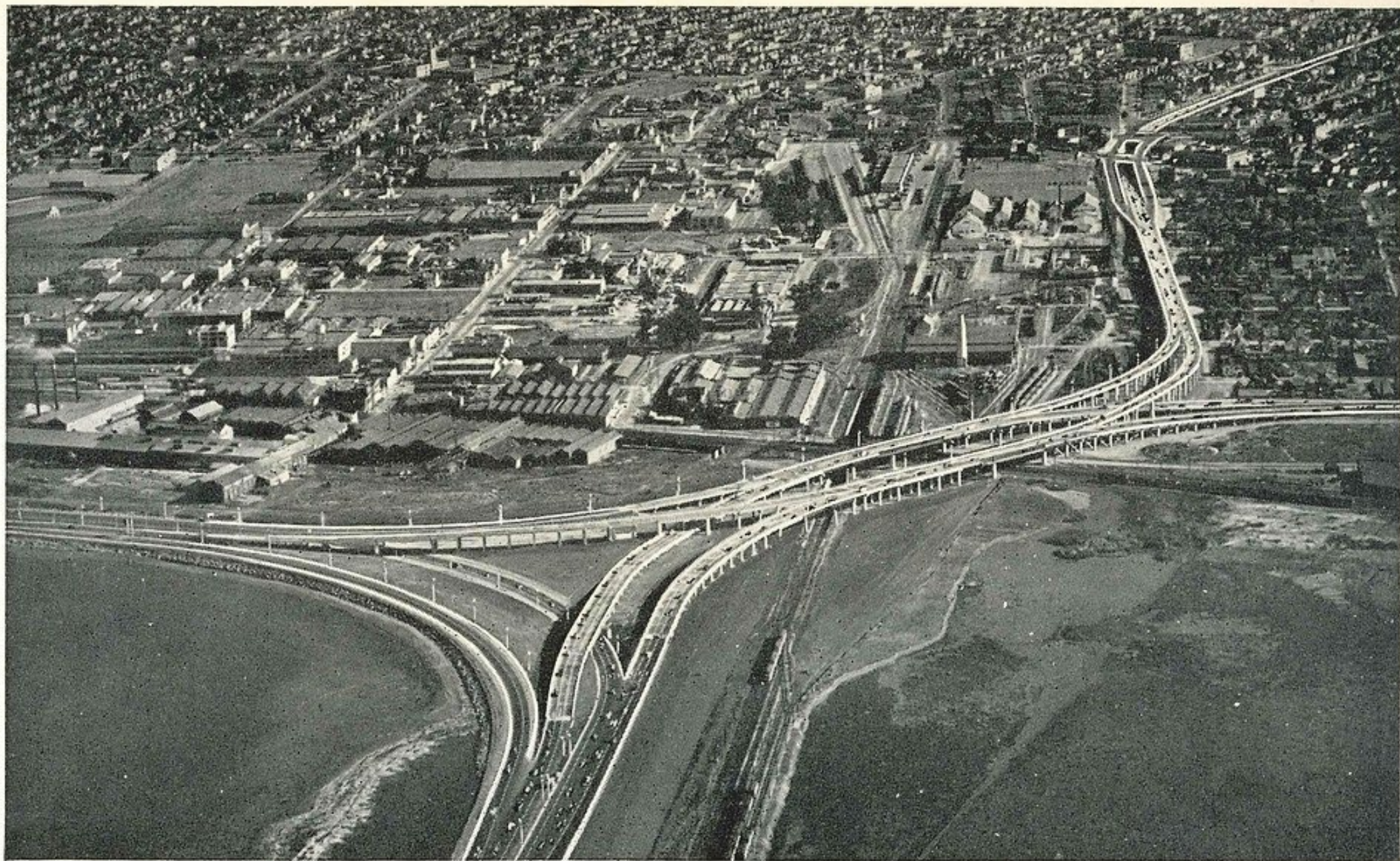
951 The Mole, Southern Pacific Co., Alameda, California.



Estuary at Washington Street, 1900/ Grove Street Terminal, 1935



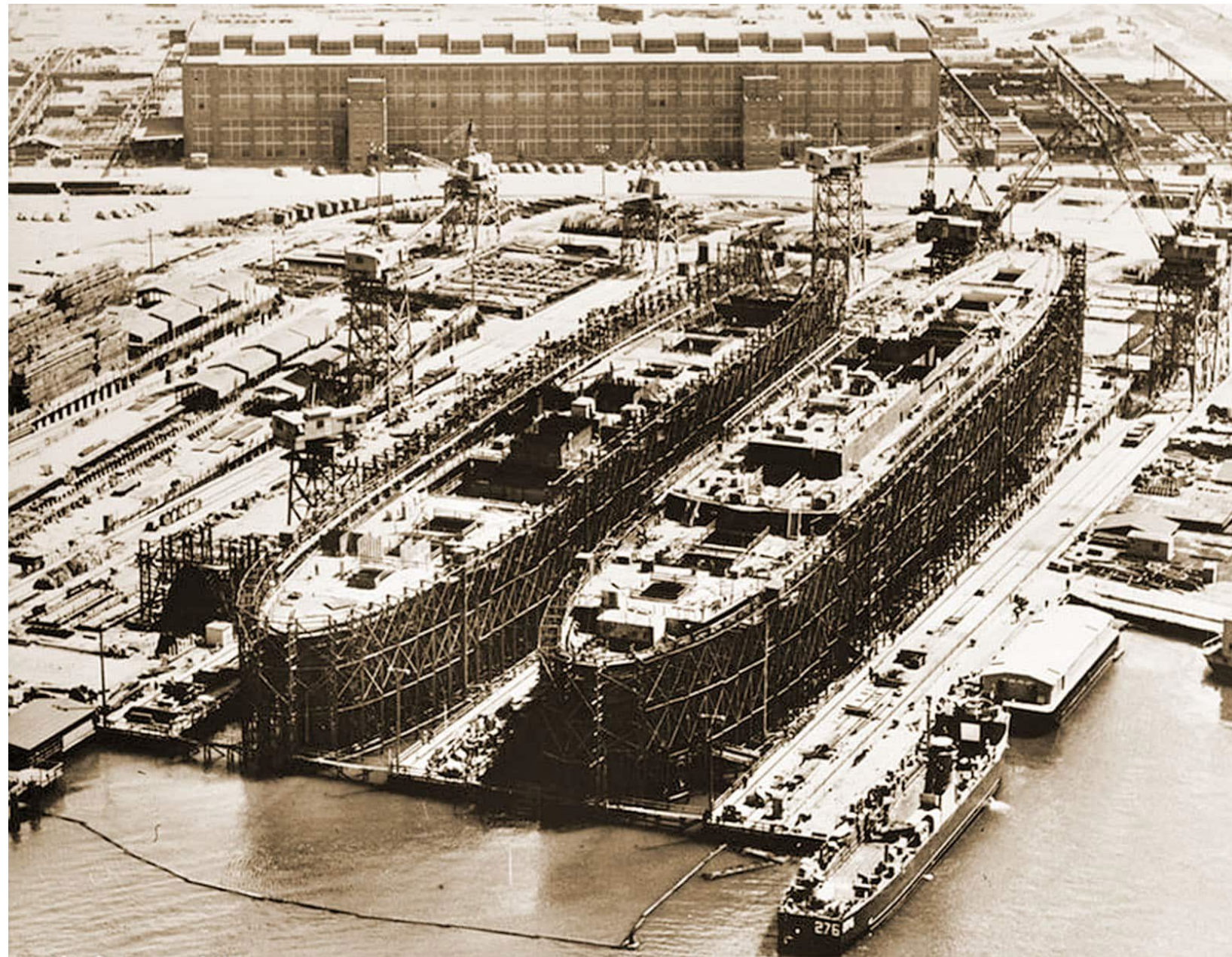




UNIQUE TRAFFIC DISTRIBUTION STRUCTURE, OAKLAND SHORE APPROACH, S.F.-OAKLAND BAY BRIDGE



Bethlehem Shipbuilding Corporation  
Alameda Works  
1940s







Naval Supply Depot, Oakland (1940-1998)

Alameda Airport/Benton Field (1927-1936)

Naval Air Station, Alameda (1936-1997)

Oakland Army Base (1941-1999)





Oakland Municipal Airport, 1925  
View of North Field, c. 1940

Bay Farm (Asparagus) Island  
Corica Park Golf Course, 1927





Oakland International  
Airport, South Field  
1962

Bay Farm Island, showing  
Harbor Bay Isle housing  
and industrial park, 1970s



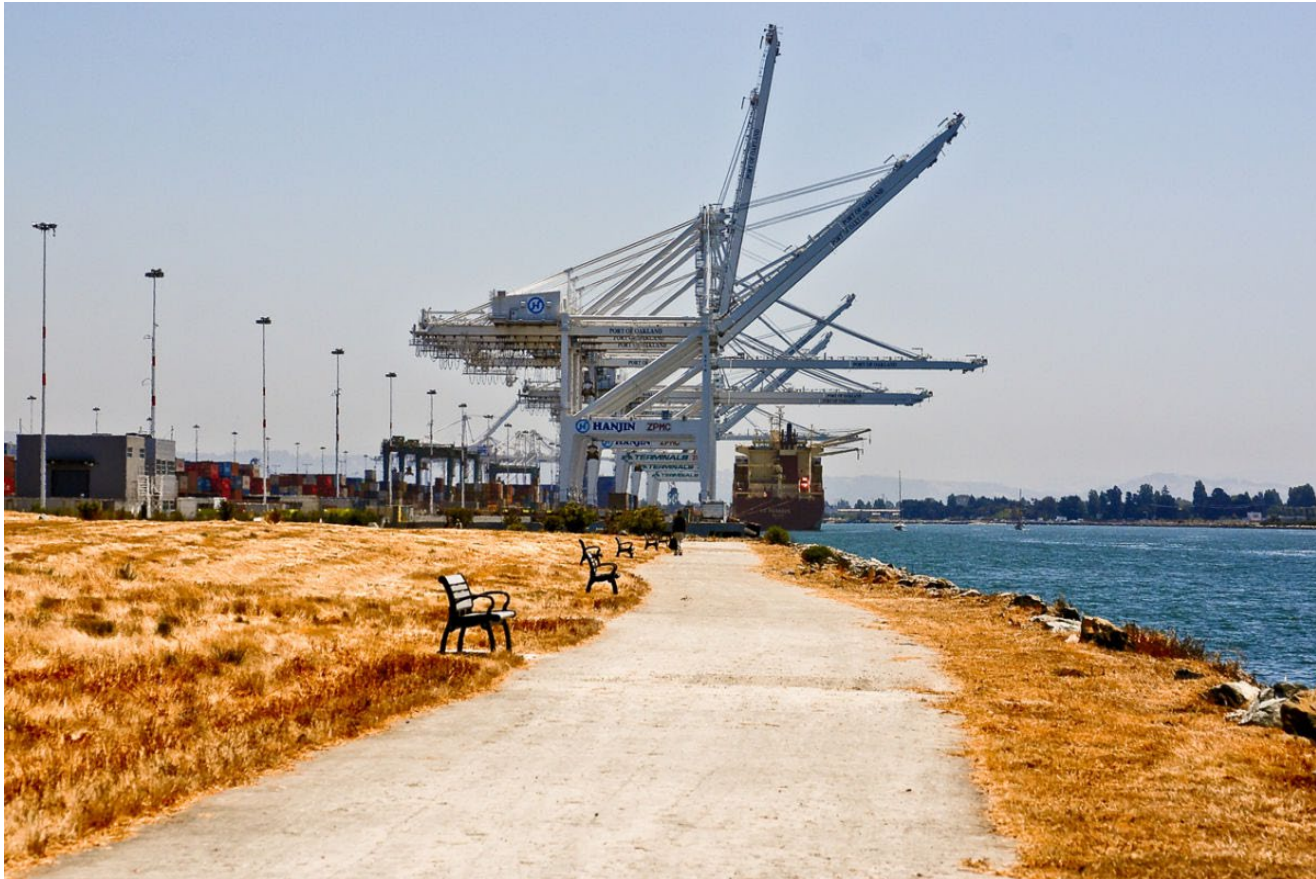
Oakland Scavenger Company  
Davis Street Sanitary Landfill  
1940-1977

Regional Park established 1980





Martin Luther King Jr. Regional Shoreline, 1979 / Middle Harbor Shoreline Park, 2004





EBMUD Wastewater Treatment Plant  
Beginning 1951





South Shore Alameda Landfill  
Utah Construction Company  
1950s-1960s



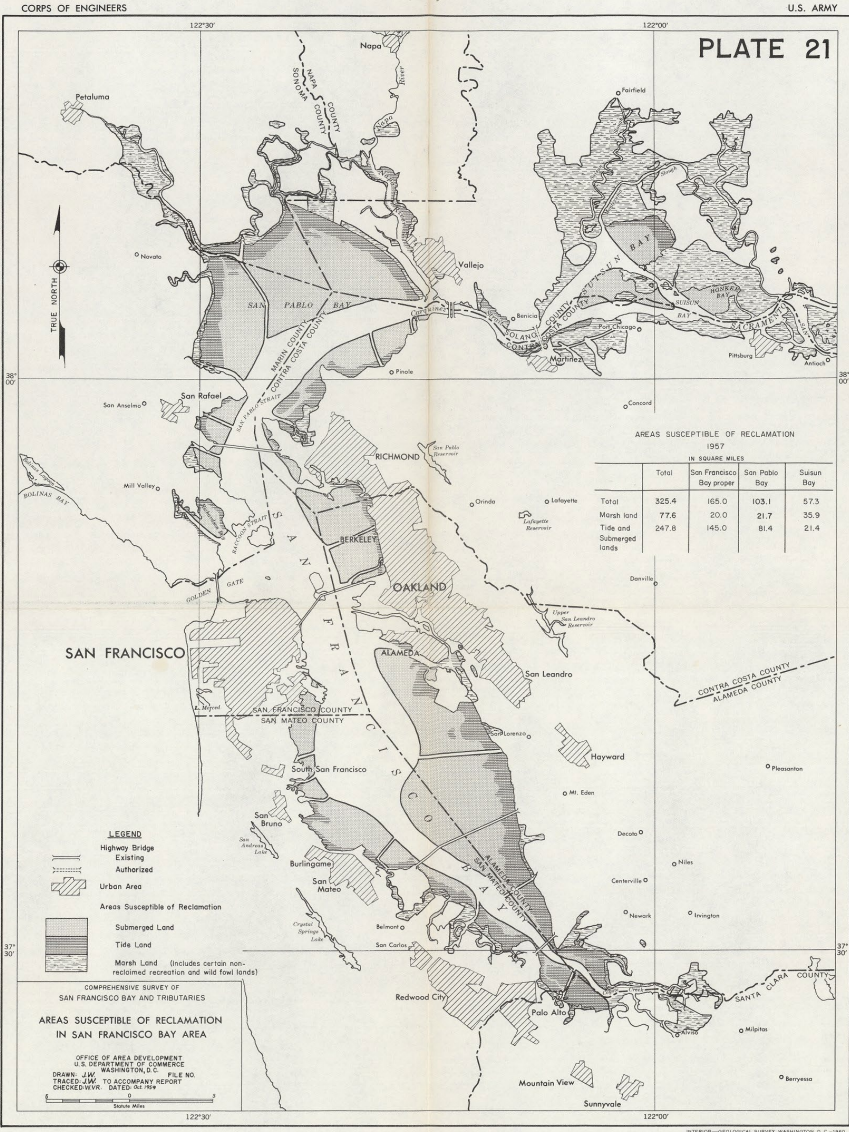


Port of Oakland  
Container Port  
Seventh Street Terminal  
1967

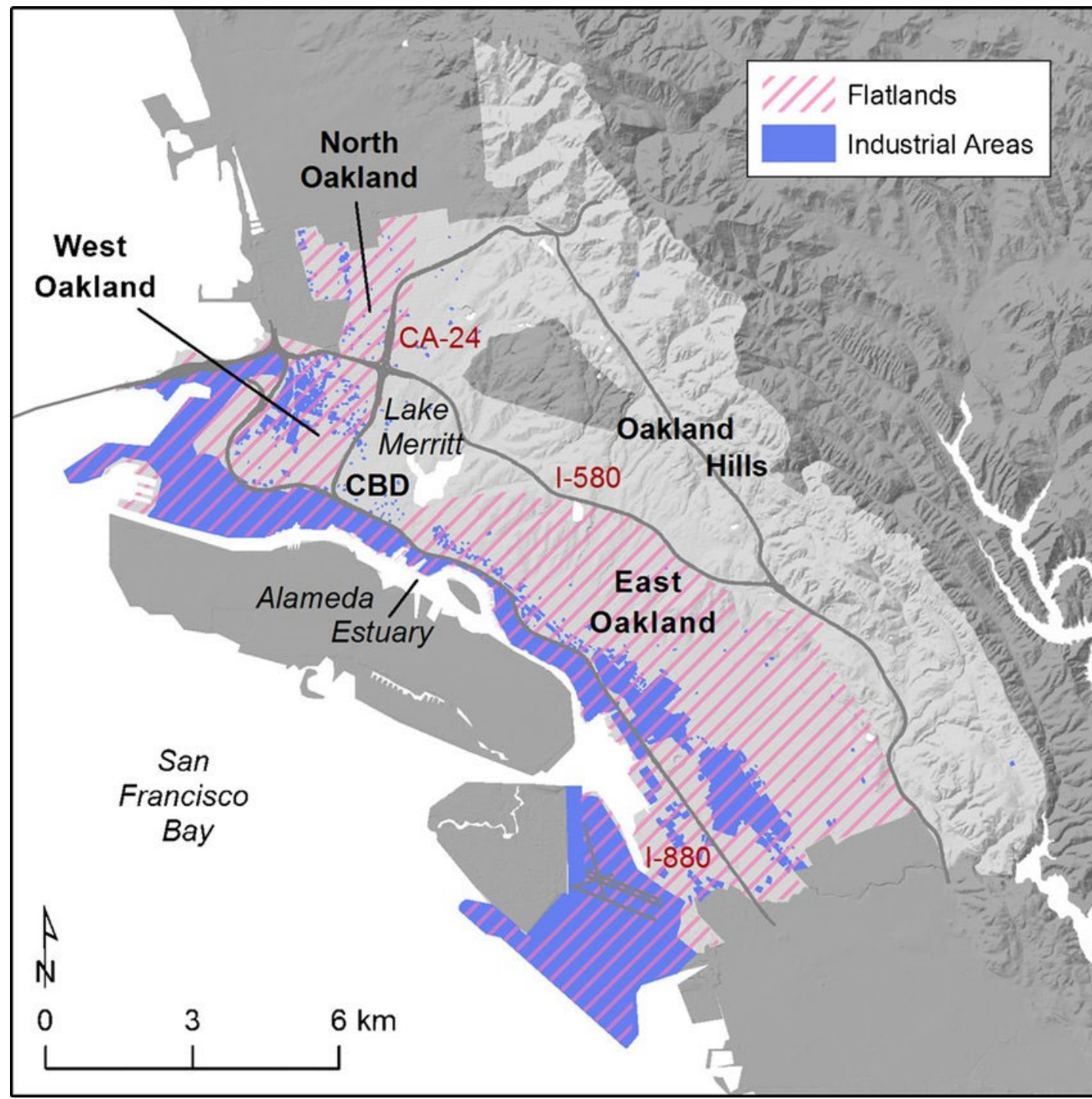




Army Corps of Engineers  
Potential New Landfill Areas by 2020  
1960s Study undertaken prior to formation of  
Bay Area Conservation and Development  
Commission (BCDC) in 1965/1970

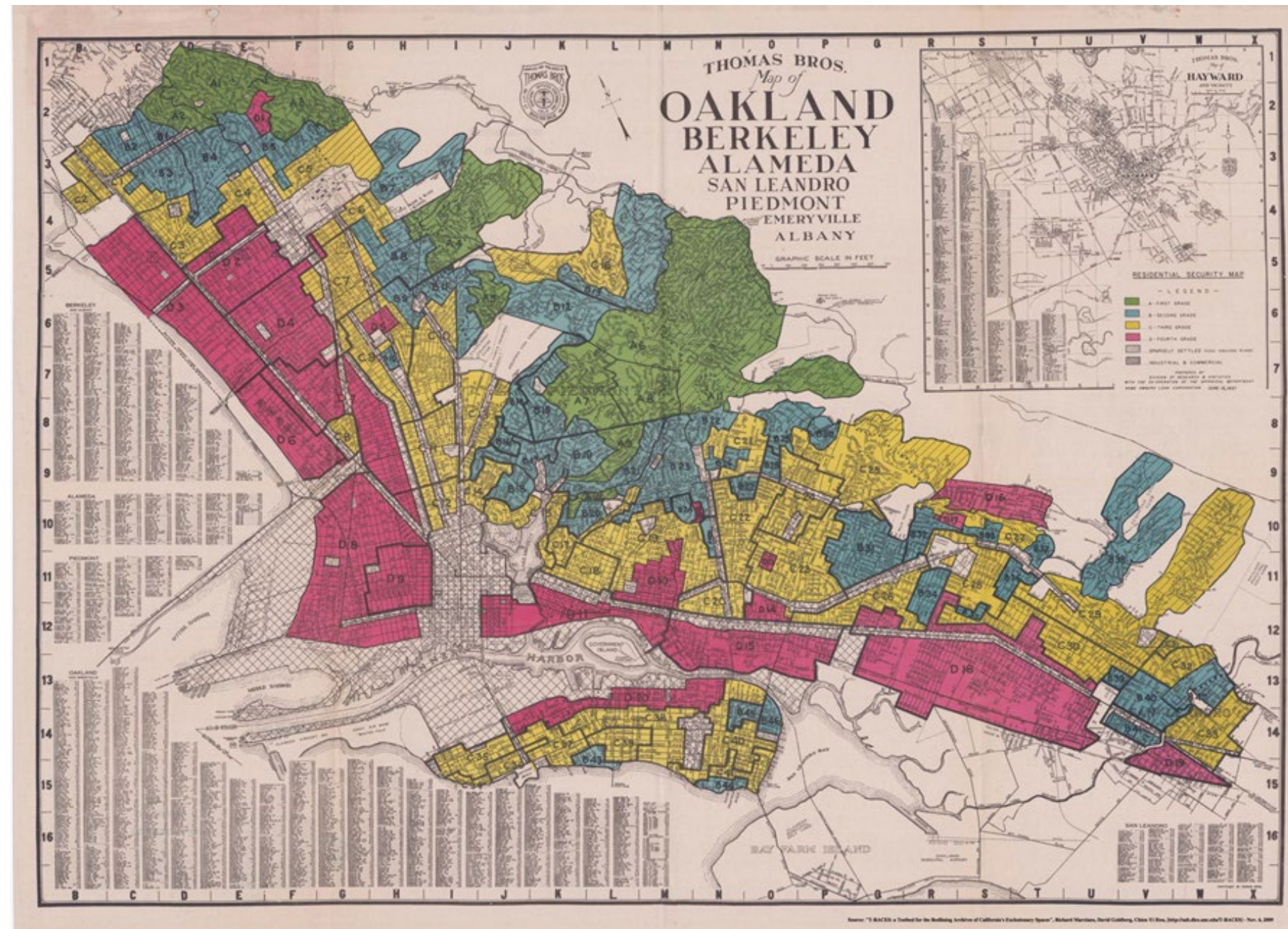








Home Owners Loan Corporation  
Residential Security Map  
1938





## Three Feet & Six Feet Rise in Sea Level

