

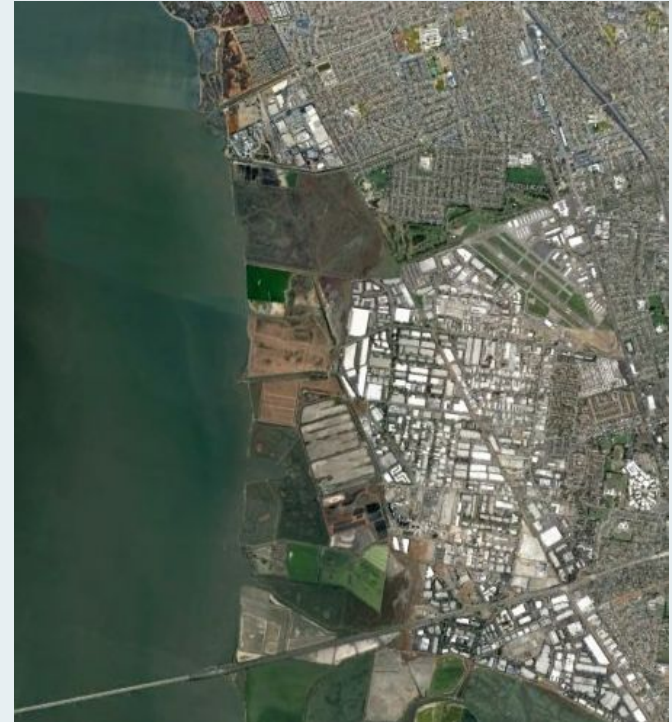
# **OLU planning efforts around San Francisco Bay**

**San Francisco Estuary Institute**

June 8, 2022

# Hayward Area Shoreline Planning Agency

Members	City of Hayward, Hayward Area Recreation and Park District, East Bay Regional Park District
Purpose	Coordinate agency planning activities and adopt and carry out policies along the Hayward Shoreline
Governance	Joint Powers Authority
Finance	Shared costs
Facilitation	Rotating Leadership
Projects	Shoreline Master Plan - Caltrans Adaptation Planning Grant
Champion	Assemblyman Quirk



<https://www.hayward-ca.gov/your-government/boards-commissions/HASPA>

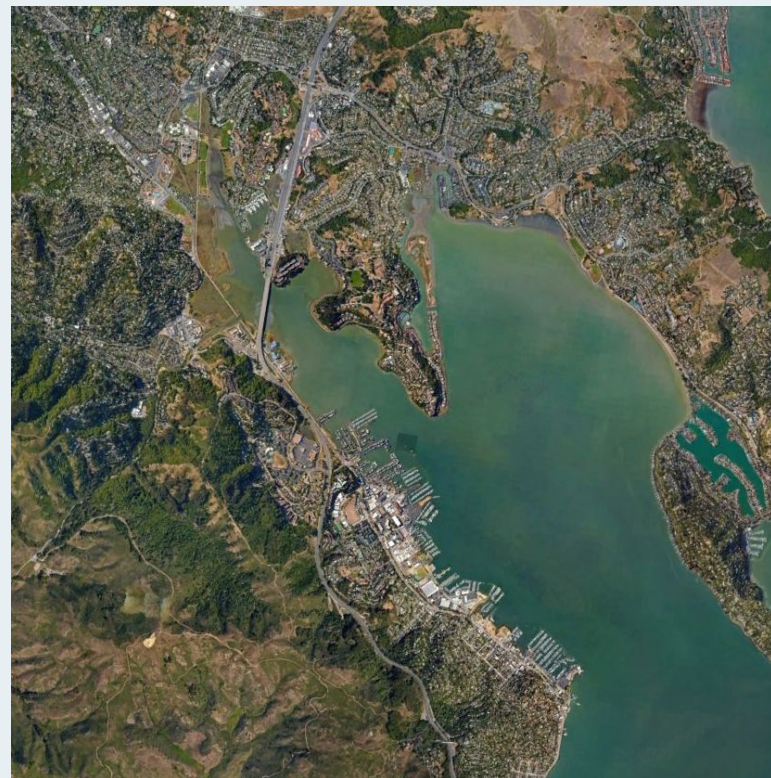
# Sunnyvale Shoreline Resilience Vision

Members	Valley Water, City of Sunnyvale, Google, Lockheed Martin, NASA, MidPen Open Space District, South Bay Salt Ponds Project
Purpose	Aligning master plans/specific plans
Governance	No formal agreement
Finance	Valley Water/Google 50:50 cost share
Facilitation	SFEI facilitation
Projects	Shoreline Resilience Vision for USACE Shoreline Phase 3 & Moffett Park Specific Plan
Champion	Norma Camacho/Jeff Holzman



# Southern Marin SLR Planning Collaborative

Members	City of Sausalito SLR Task Force, Tam Valley NRG Network, Shore Up Marin City, County of Marin
Purpose	Richardson Bay
Governance	Individual organizations
Finance	
Facilitation	
Projects	Dunphy Park, Bothin Marsh
Champion	Supervisor Stephanie Moulton-Peters



[City of Sausalito Task Force](#)  
[Tam Valley Sea Level Rise Task Force](#)  
[Richardson Bay Resilience story map](#)

# SR37-Baylands Group

Members	Coastal Conservancy, Sonoma Land Trust, CDFW, USFWS, NERR, Marin Audubon
Purpose	San Pablo Baylands Restoration
Governance	No formal agreement
Finance	Coastal Conservancy then MTC
Facilitation	Coastal Conservancy/SFEI
Projects	Technical Working Group for SR37 Planning
Champion	Ashley Nguyen, Jessica Davenport





# Santa Clara Climate Collaborative

Members	Santa Clara County cities and public agencies
Purpose	Develop and formalize partnerships to coordinate and fund projects
Governance	Governance being developed
Finance	Grant-funded
Facilitation	Office of Sustainability/ Blue Point Planning
Projects	Collaborative
Champion	Jasneet Sharma



# Thank you!

[jeremyl@sfei.org](mailto:jeremyl@sfei.org)

[adaptationatlas.sfei.org](http://adaptationatlas.sfei.org)



**SFEI**

SAN FRANCISCO ESTUARY INSTITUTE

