



HAYWARD AREA SHORELINE PLANNING AGENCY

December 8, 2021

Presentation to the San Leandro Bay/Oakland-Alameda Estuary
Adaptation Working Group



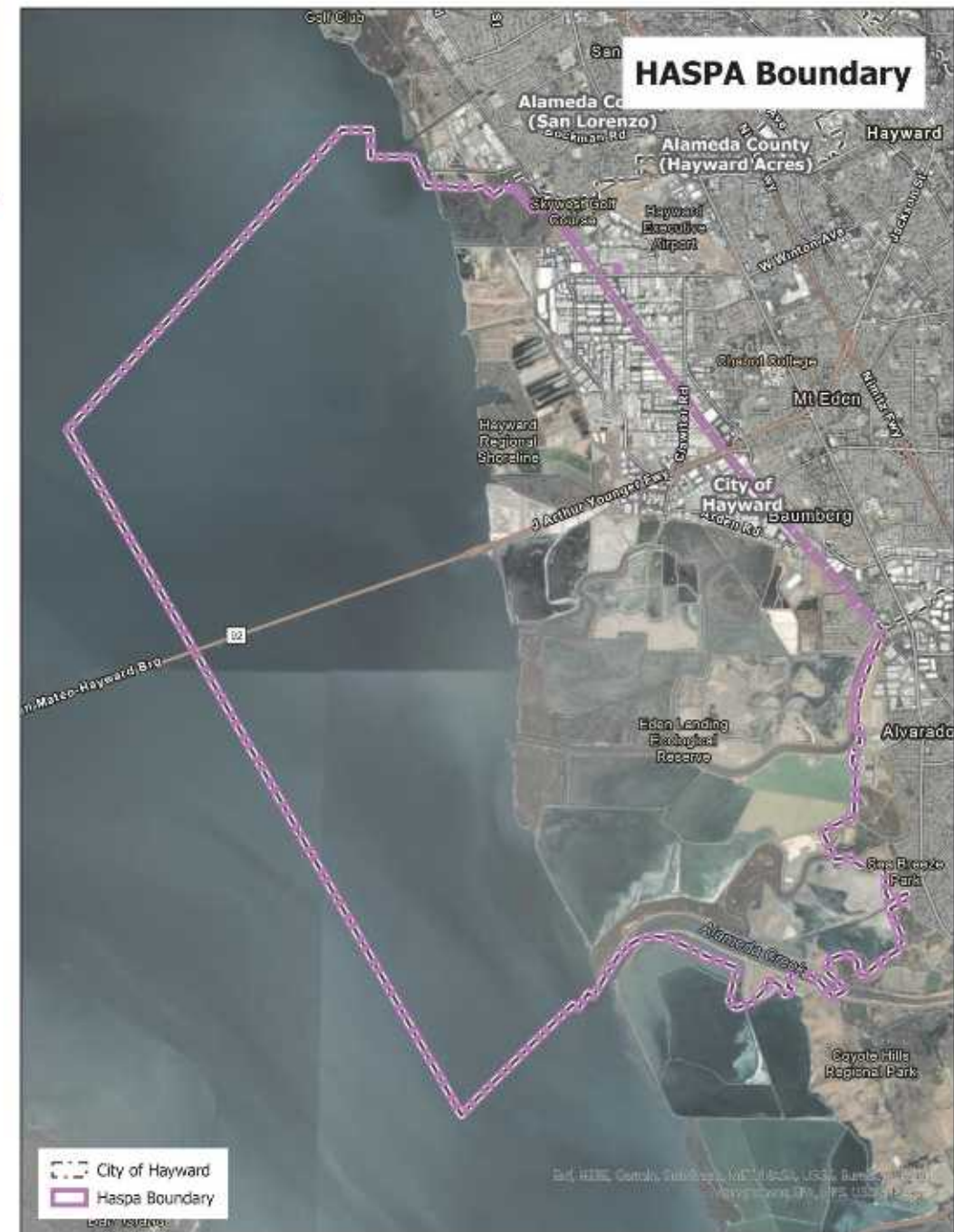
BACKGROUND

- Established in 1970
- Current Member Agencies
 - City of Hayward
 - Hayward Area Recreation & Park District
 - East Bay Regional Park District
- Coordinate agency planning activities and adopt and carry out policies for the improvement of the Hayward Shoreline for future generations



BACKGROUND

- Board consists of one Board member from each Member Agency
- HASPA Board of Trustees Meets Quarterly
- HASPA Technical Advisory Committee (TAC) consists of staff from the member Agencies
- Coordination/Facilitation role rotates among the agencies every five years



BACKGROUND



Assets

- Bay Trail
- Hayward Regional Shoreline
- Shoreline Interpretive Center
- Water Pollution Control Facility



Original Purpose/Objectives

- Preserve environmental and historical resources
- Promote education & research
- Provide recreational opportunities
- Review land use proposals
- Support land management and stewardship efforts



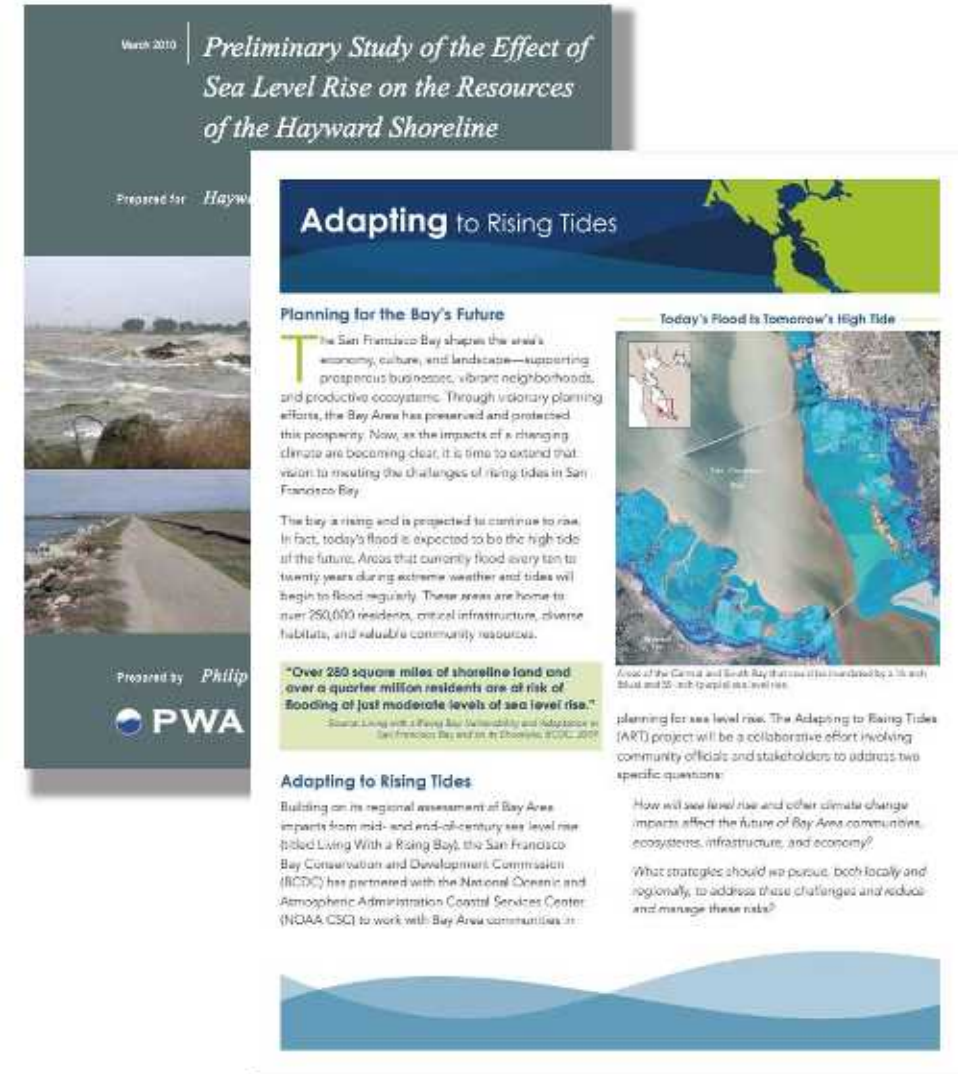
MEMBER AGENCY CONTRIBUTIONS

- Member agencies make annual contribution to cover expenses – currently \$12,000
- Each agency has 1-2 staff on TAC
- TAC meets monthly
- Each staff member typically spends approximately 5 - 10 hours per month on HASPA activities/meetings
- Staff from host agency typically spends approximately 20 to 30 hours per month coordinating HASPA activities/meetings



Planning for Sea Level Rise

- Preliminary Study of the Effect of Sea Level Rise on the Resources of the Hayward Shoreline (2010)
- ART Project (2011)



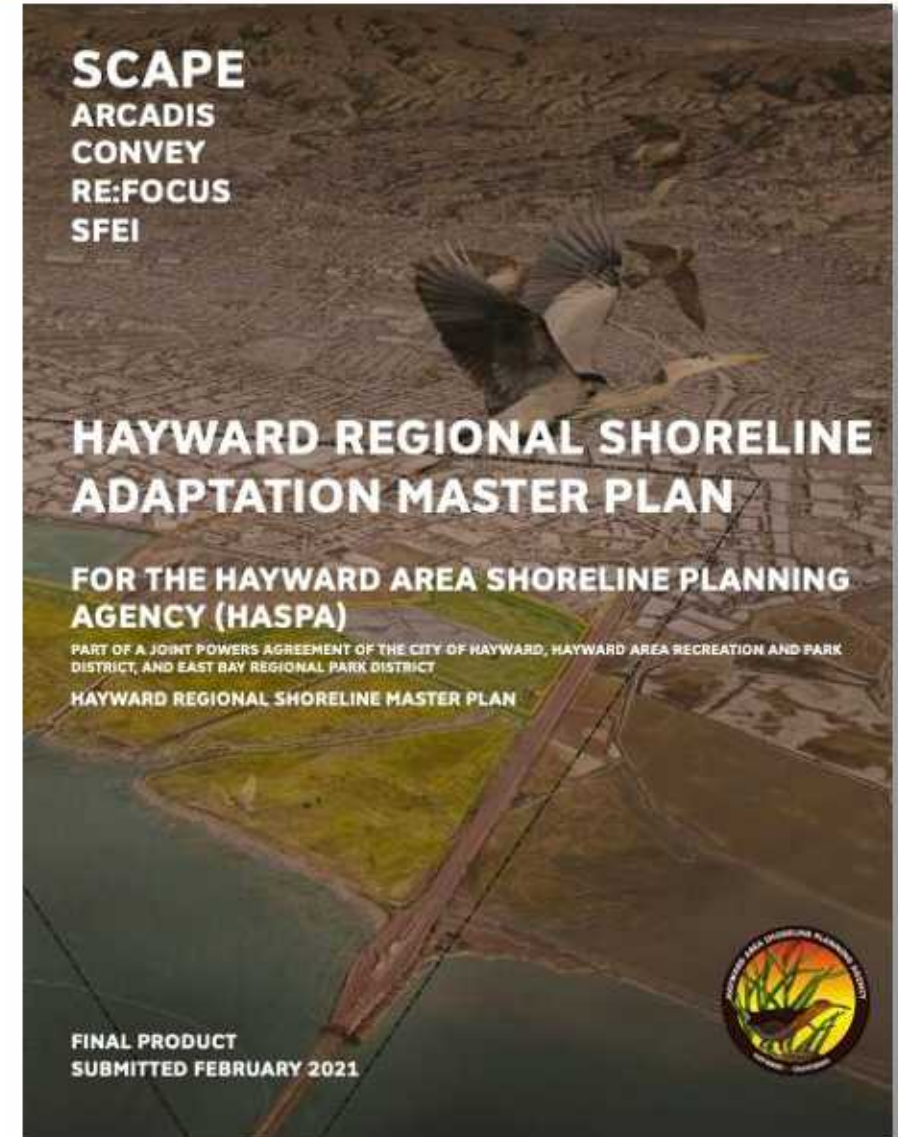
JPA Renewal

- Joint Powers Agreement has five-year term
- 2015 – During renewal, the mission of HASPA was formally changed to focus on addressing sea level rise.



Planning for Sea Level Rise

- Hayward Shoreline Resilience Study (2014/2015)
- Shoreline Adaptation Master Plan (2021)



MASTER PLAN IMPLEMENTATION

- San Lorenzo-Bockman Levee Project (OLSD/HASPA)
- First Mile Project (EBDA)
- Freshwater Treatment Marsh (City of Hayward/EBDA)
- Hayward Marsh Restoration (EBRPD)



HASPA EXPANSION OUTREACH

- Oro Loma Sanitary District
- Alameda County Flood Control District
- East Bay Dischargers Authority
- Alameda County Mosquito Abatement District
- Castro Valley Sanitary District
- Union Pacific Railroad
- Bay Trail
- Calpine
- South Bay Salt Ponds
- SF Bay Restoration Authority
- Cal Trans



Budget

- No formal budget
- SB1 Caltrans Planning Grant for Shoreline Master Plan
- Pooled funds for:
 - 2010 Study
 - Climate Corps Fellow
 - San Lorenzo-Bockman Levee Study



Questions/Discussion



ERIK PEARSON
Environmental Services Manager
erik.pearson@hayward-ca.gov

TAYLOR RICHARD
Assistant Planner
taylor.richard@hayward-ca.gov

More information:
<https://www.hayward-ca.gov/your-government/boards-commissions/HASPA>

Master Plan Webpage:
<https://www.hayward-ca.gov/shoreline-master-plan>