

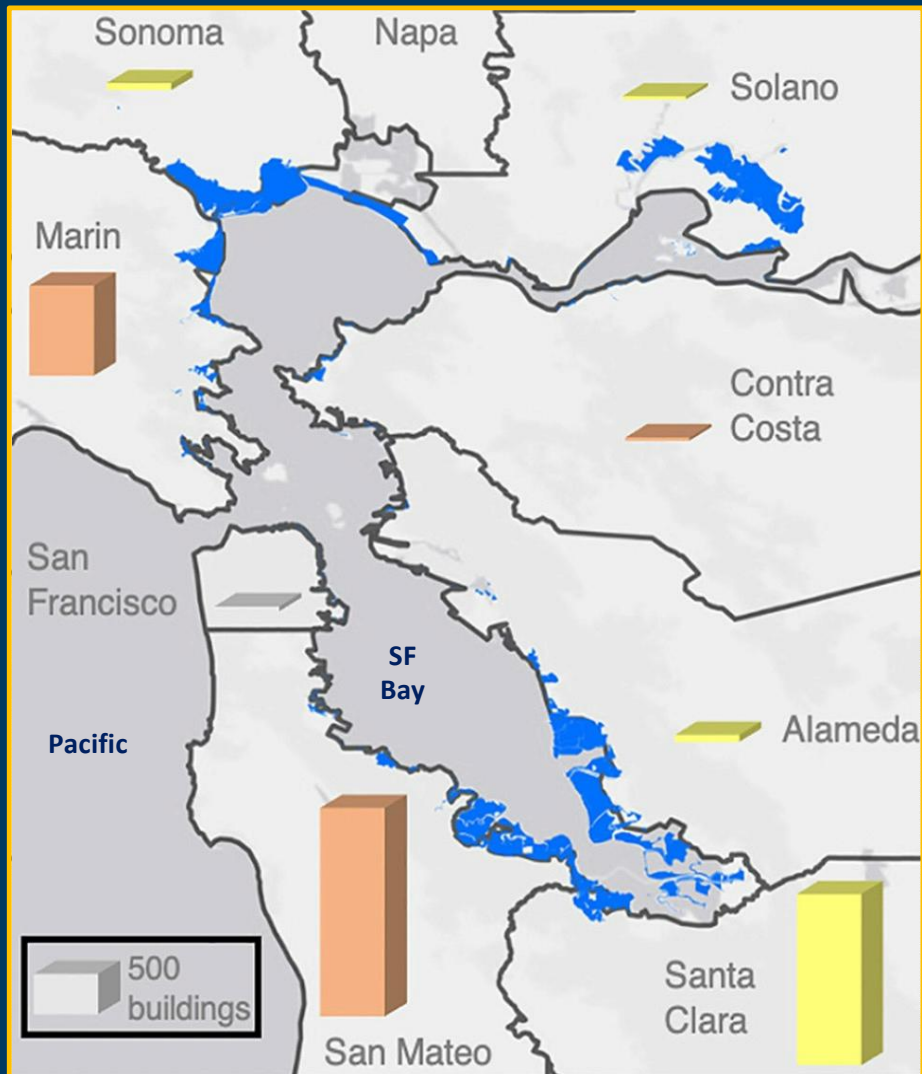
***San Leandro Bay/Oakland Alameda Estuary
Adaptation Working Group***

San Mateo County Flood and Sea Level Rise Resiliency District

Len Materman, CEO

December 8, 2021

OneShoreline
Building Solutions for a Changing Climate



San Mateo County: Ground Zero for Sea Level Rise Vulnerability

Most vulnerable CA county to 3 feet of sea level rise in terms of:

- population, including underrepresented population
- property value
- number of homes
- number of contaminated sites

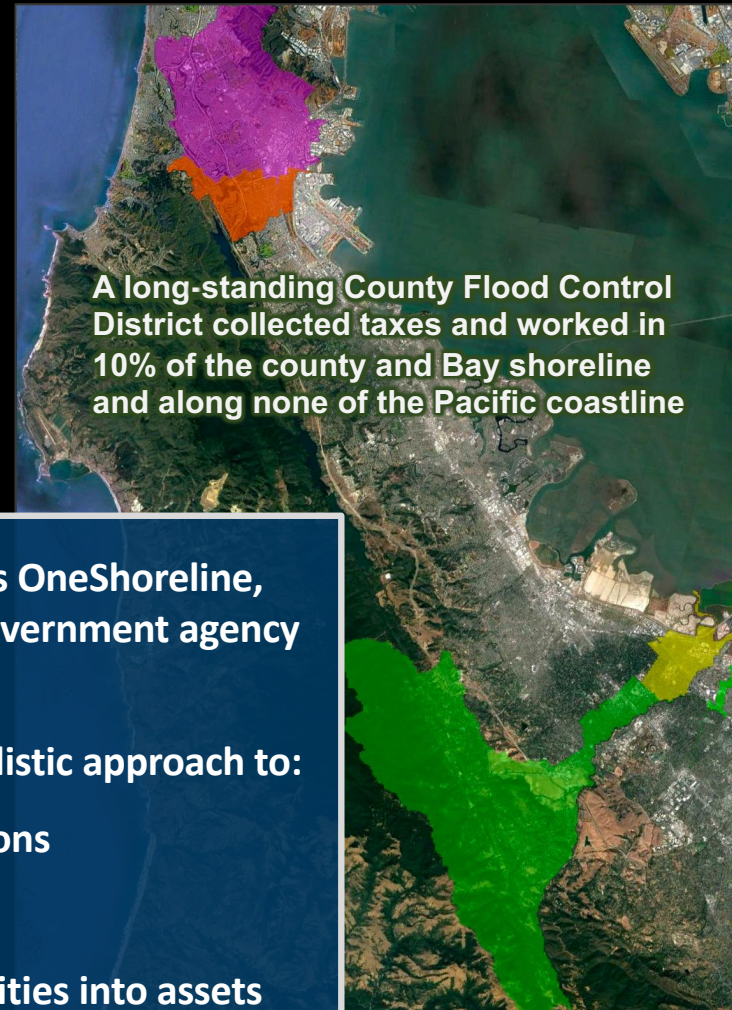
One of six counties in U.S. and only one on West Coast with over 100,000 people living in an area impacted by 3 feet of SLR.

Key community assets in the county vulnerable to sea level rise: schools, hospitals, beaches, highways, water treatment plants, power plants, wetlands, and major corporations.

This county's 11 cities along the Bay and 3 along the Pacific were not well-positioned to address this regional challenge



A long-standing County Flood Control District collected taxes and worked in 10% of the county and Bay shoreline and along none of the Pacific coastline



Through State legislation (AB 825 in 2019), this special district, known as OneShoreline, was established January 1, 2020 as the first countywide independent government agency in California focused on the water-related impacts of climate change.

OneShoreline builds resilience to climate change impacts by taking a holistic approach to:

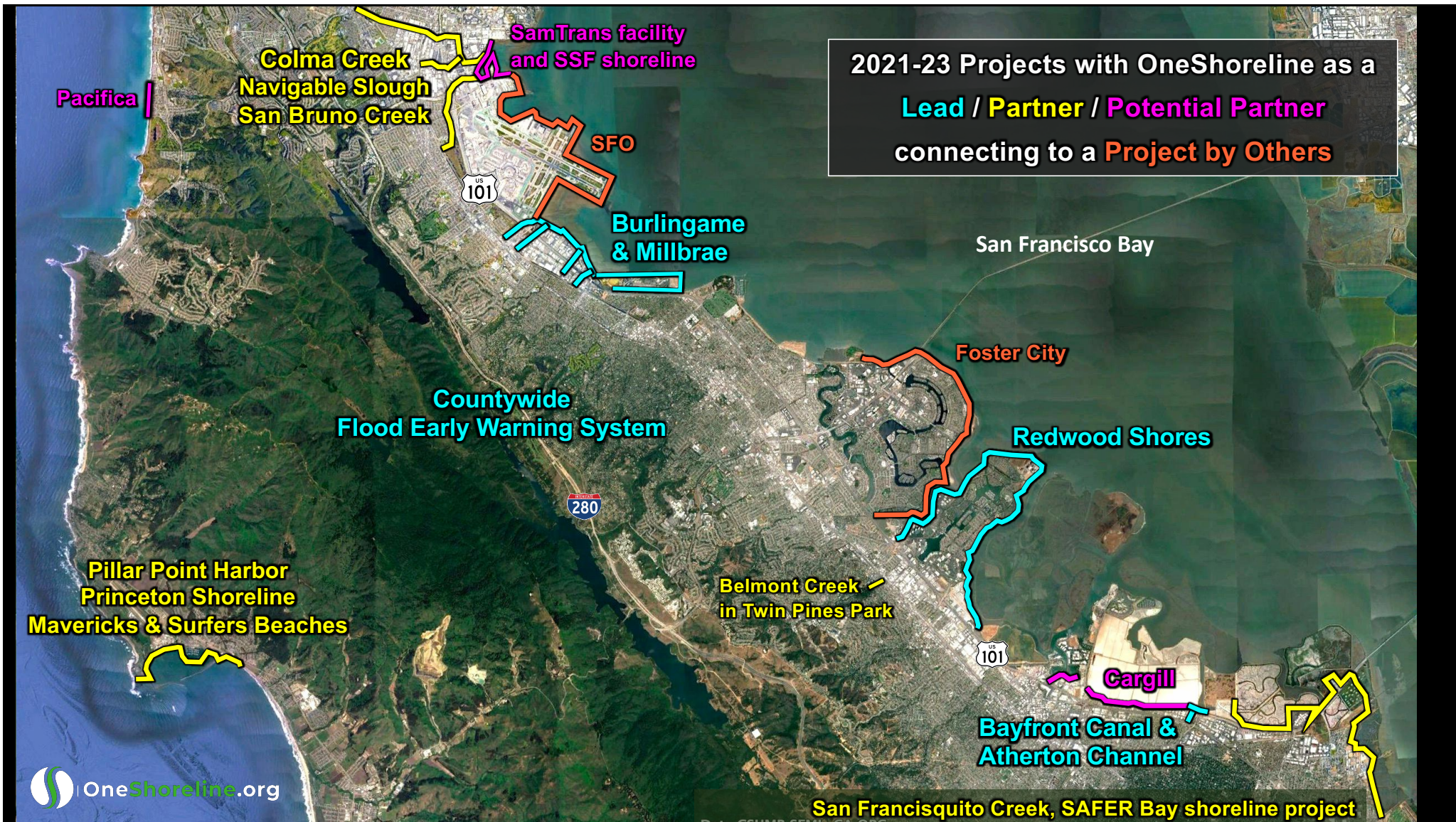
- GEOGRAPHY – align and connect protection for neighboring jurisdictions
- THREATS – more extreme storms and substantial sea level rise
- OBJECTIVES – reduce threats; turn waterways & shorelines from liabilities into assets integrated into communities; utilize green infrastructure and public and private lands

OneShoreline Board of Directors, as defined by AB 825:

- **2 members of the County Board of Supervisors (1 at-large, 1 Pacific coastside district)**
- **5 members from different city councils (4 geographically distributed, 1 at-large)**
- **4-year Board terms are staggered**

OneShoreline Funding:

- **Start-up operating funds were provided by County and all 20 cities within it for 3 years.**
- **Operating efficiencies, additional funds from the County, and a direct appropriation in the recent State budget are extending the start-up period an additional 3 years.**
- **Project funding from benefitting jurisdictions and grants**



OneShoreline 2021-23 priorities include:

- Complete our first construction project – a long-planned effort to protect 5 mobile home parks and others from frequent flooding from the Bayfront Canal and Atherton Channel
- Advance new multi-jurisdictional projects that connect and align substantial protection for neighboring jurisdictions, and projects in 3 long-standing flood zones
- Develop a source of long-term, stable funding for climate resilience work
- Work with cities and developers so public and private infrastructure and development can function for decades, during which time the impacts of climate change, including sea level rise, will grow substantially

In early 2020, OneShoreline inherited the designs and CEQA document of the Bayfront Canal and Atherton Channel project to protect mobile homes and businesses in Redwood City, Menlo Park, and unincorporated County. Over the next 15 months, OneShoreline completed a funding agreement, land rights, and environmental permits.



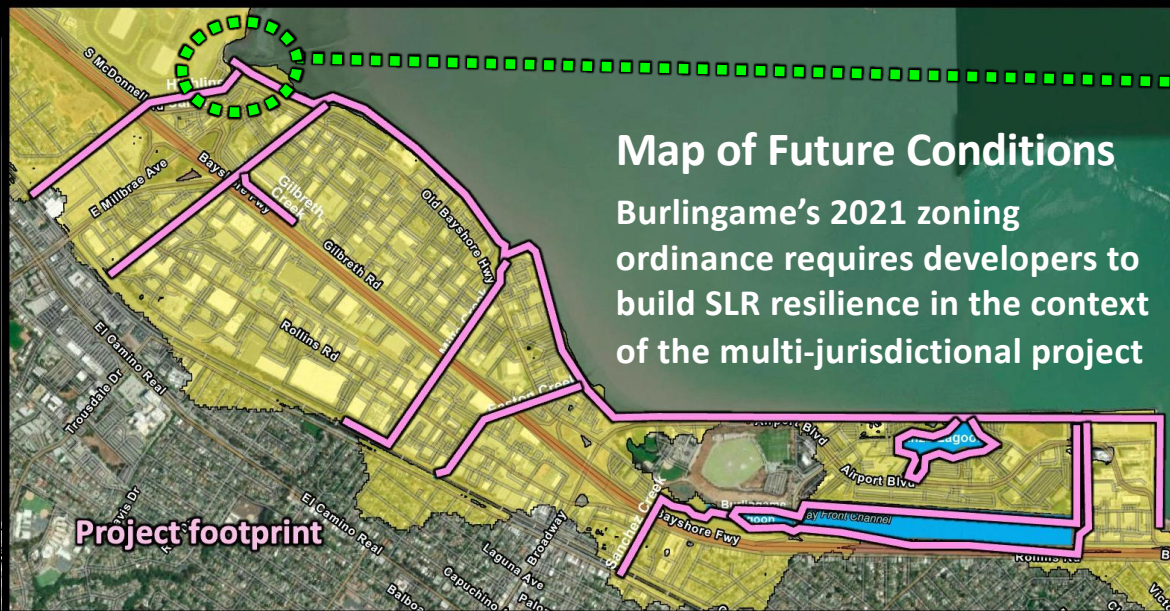
Construction will be completed in January 2022.





SEA LEVEL RISE ADAPTATION ASSESSMENT

City of Millbrae, CA



- **Project Partners will:**
 - **establish common objectives & assumptions**
 - **share technical information**
 - **share environmental mitigations**
 - **share costs**
 - **utilize public & private lands to meet objectives**

Planning and zoning along San Francisco Bay to build resilience to future conditions brought by climate change

- **New infrastructure and development in areas impacted by SLR are expected to function for decades, during which time the impacts of climate change and SLR will grow substantially.**
- **Planning now for protection is easier and cheaper than retrofitting for it later.**
- **Thus, these projects should be designed to function under foreseeable future conditions.**
- **On December 6, 2021, City of Burlingame became the first city in the Bay Area to incorporate into its zoning ordinance requirements to achieve SLR resilience. Other cities have expressed interest in adding this to their key planning documents.**



SFCJPA.ORG

The San Francisquito Creek Joint Powers Authority is an independent government agency formed in 1999 to coordinate actions by five agencies united by a creek that forms the county line.

The Board of Directors are elected officials from three cities and two water-related countywide agencies.

By 2012, the SFCJPA was taking the lead in creating and implementing a common vision among those agencies.



Thank you

Please contact us at info@OneShoreline.org

