

City of Alameda

Clement Avenue / Tilden Way Improvement Project



Virtual Open House Meeting
September 30, 2025

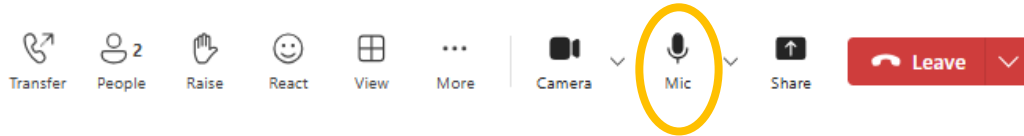


Introduction

- Ali Hatefi, ahatefi@alamedaca.gov

- Meeting is recorded

- Mute



- Hold questions until end of presentation

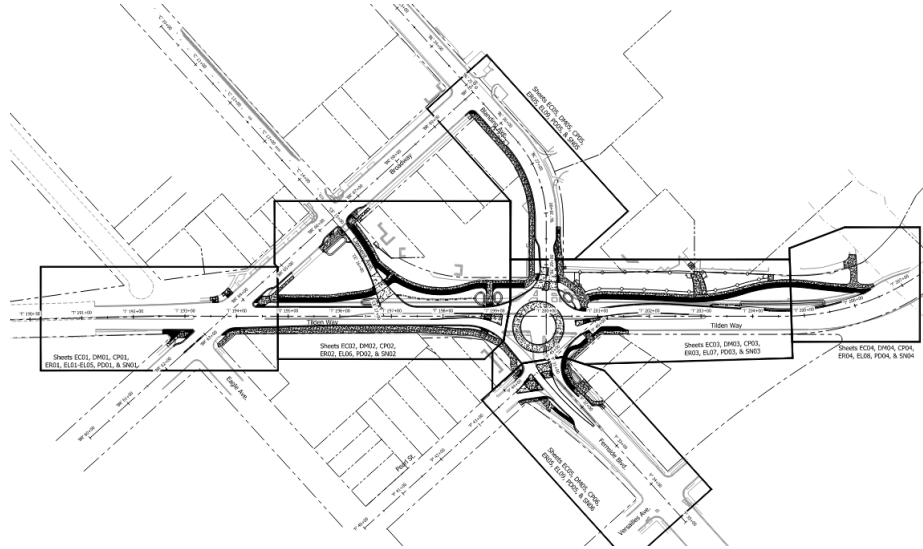
- Copy of slides available after meeting

alamedaca.gov/clementtilden

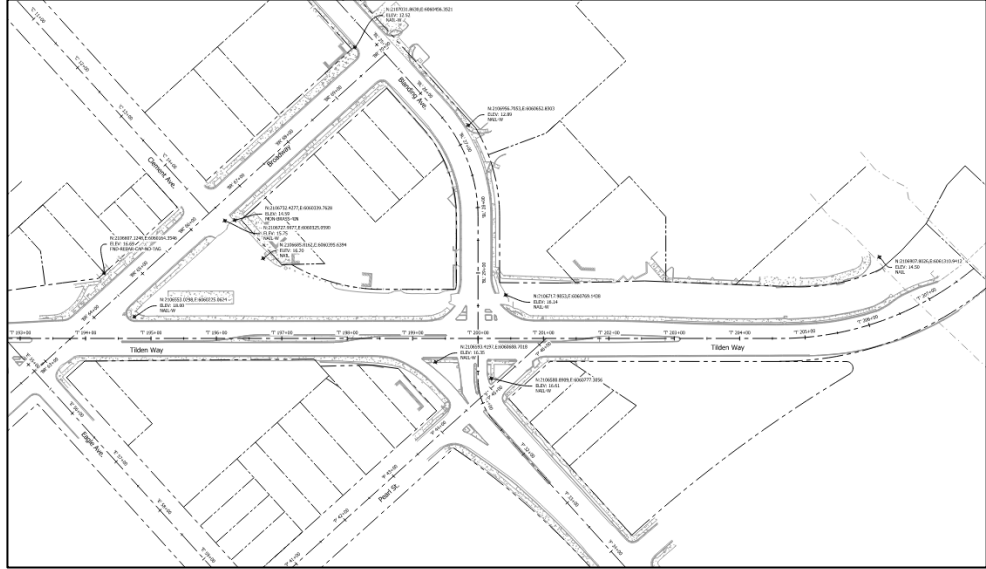


Agenda

- Location and Overview
- Timeline
- Construction Impacts
- Construction Outreach
- Contacts



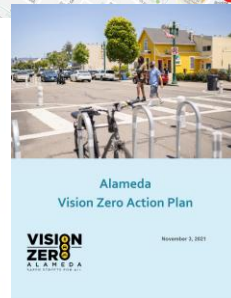
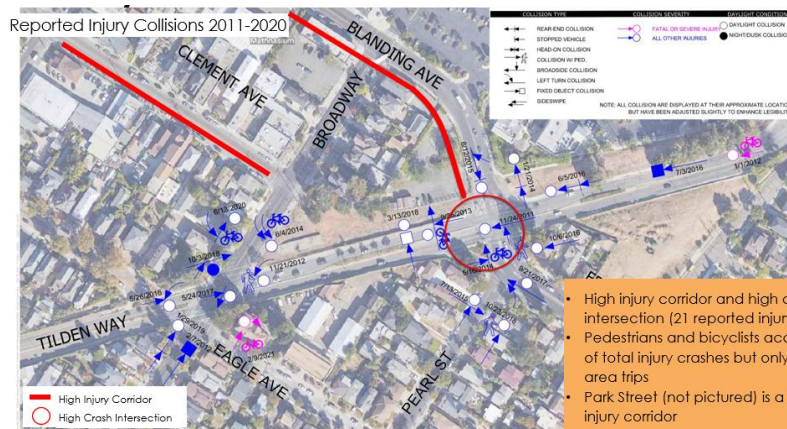
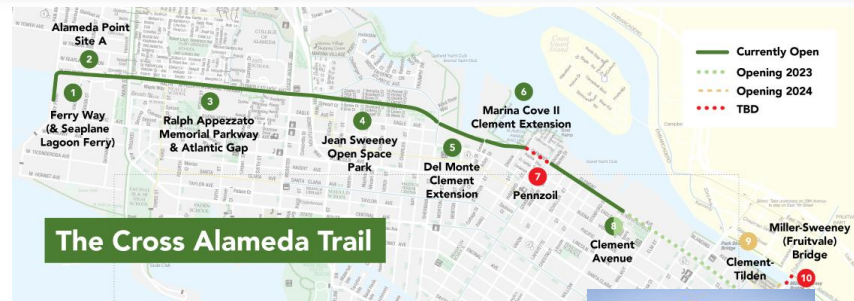
Location



Overview

Project Goals and Intended Outcomes

- Prioritize **safety**
- Improve **mobility** for all roadway users
- Improve **bicycle and pedestrian** access
- Provide **landscaping** opportunities
- **Reduce greenhouse gas** emissions
- **Comply** with City plans and policies



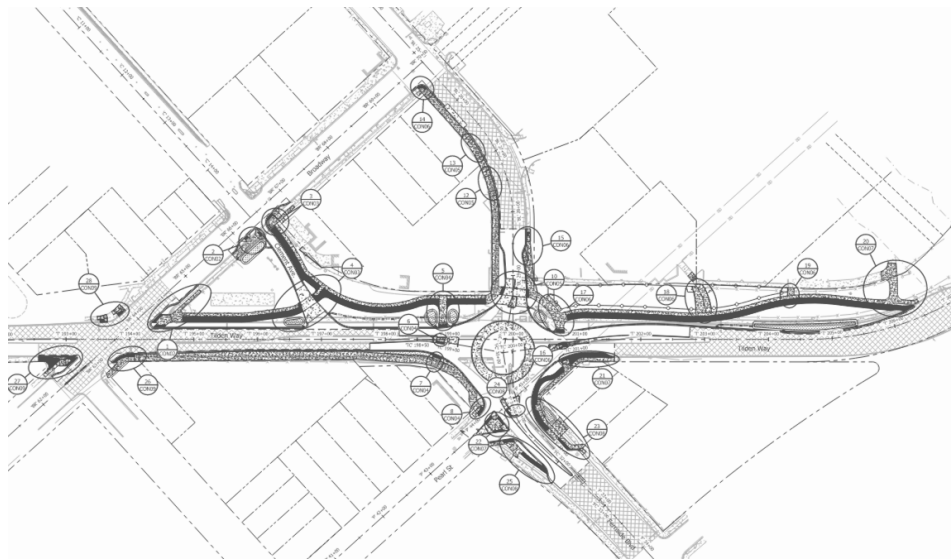
- High injury corridor and high crash intersection (21 reported injury crashes)
- Pedestrians and bicyclists account for 38% of total injury crashes but only 9% of study area trips
- Park Street (not pictured) is a Tier 1 high injury corridor



Project Overview

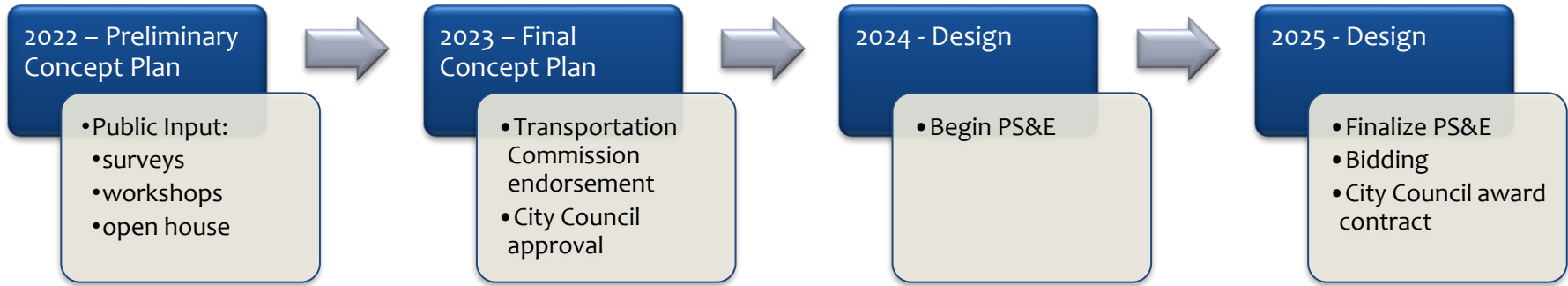
Project Scope (includes but not limited to)

- Cross Alameda Trail gap closure at Clement Avenue
- SF Bail Trail Connection
- Roundabout at Tilden/Blanding/Fernside Intersection
- Road diet at Tilden Way with vehicle travel lane reductions
- Clement Avenue extension between Tilden and Broadway
- Landscape Improvements
- Dog Park Construction
- Bike/Pedestrian improvements at Tilden Way/Broadway
- Bicycle/Pedestrian improvements and paths
- Rail platform/track removal

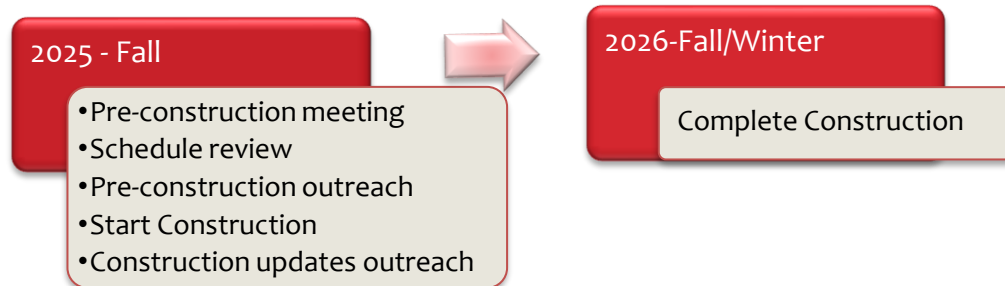


Timeline

WHERE WE'VE BEEN



WHERE WE'RE GOING



Construction Impacts

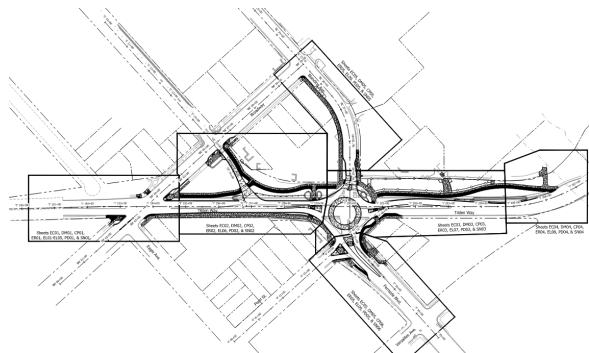
Construction Timeline*

Start of construction/mobilization: October 20, 2025

Duration of all construction (Project Scope) activities: October 2025 thru December 2026

Working Days/Hours: Monday – Friday (excluding City holidays)

7:00 AM to 6:00 PM



Construction Contractor: Bay Cities Paving & Grading

****timeline and days/hours of work subject to change due to weather delays, unforeseen conditions, and impacts due to certain construction activities***



Construction Impacts

Traffic Impacts

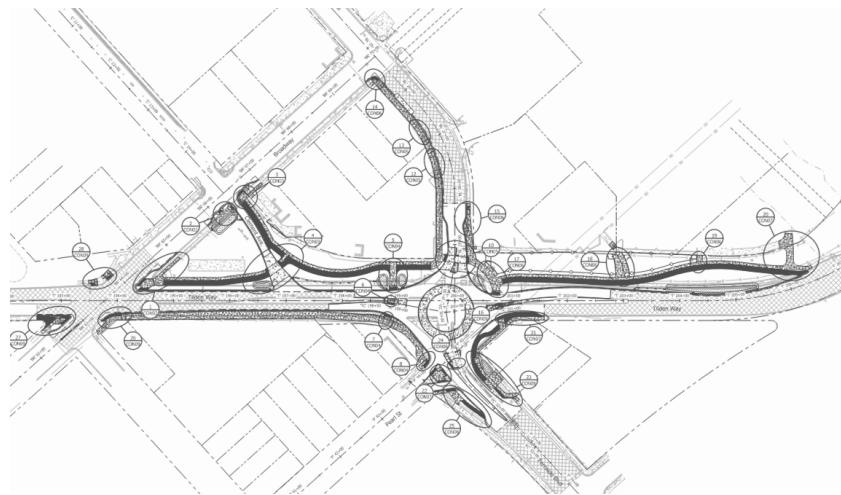
Temporary roadway on Tilden to maintain thru traffic during roundabout construction

Roundabout construction in phases with road closures/detours

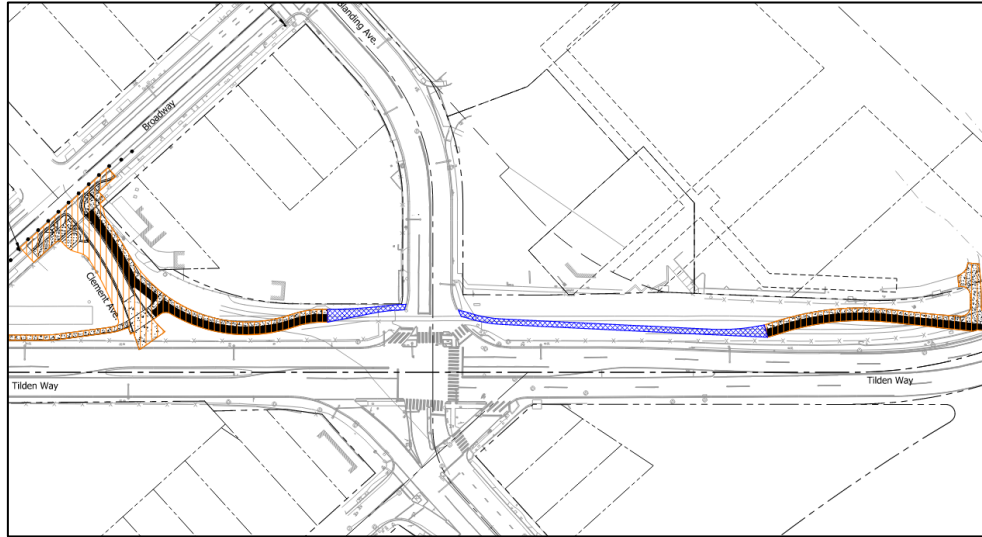
Pedestrian detour routes

On-street parking restriction

Thru traffic impacts during construction hours (flaggers, lane closures)



Construction Impacts

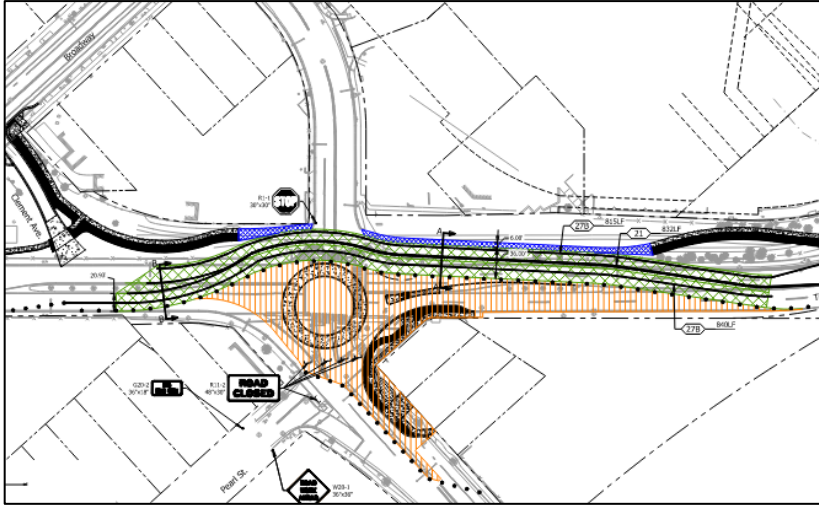


Phase 1

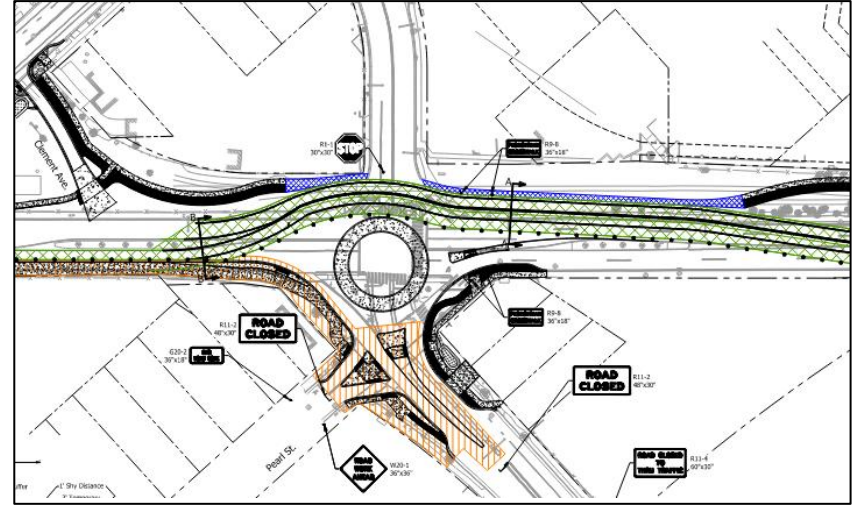
Construct pathway improvements to allow pedestrian access during roundabout construction.
Start construction of Clement Avenue extension.



Construction Impacts



Phase 2



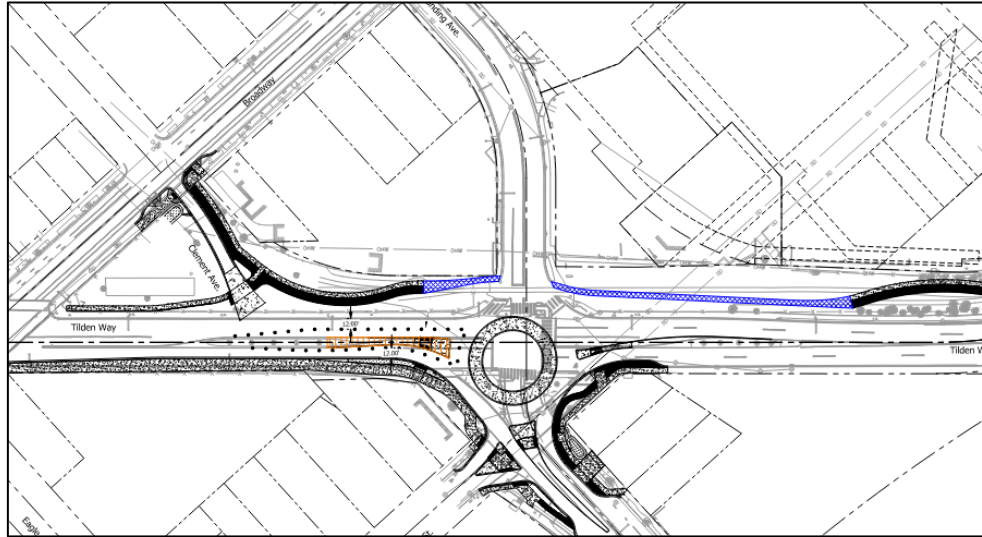
Phase 3

Construct temporary roadways to allow thru traffic movement on Tilden Way.

Provide local traffic detours (**all roadway users**) during roundabout construction and Fernside Boulevard road closure approaching Tilden Way.



Construction Impacts



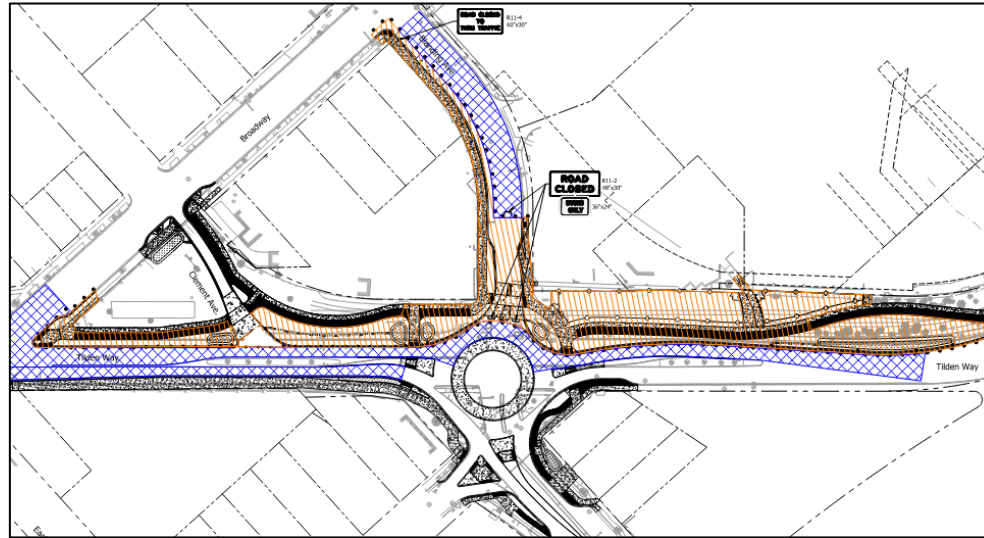
Phase 4

Complete Clement Avenue extension to Tilden Way.

Construct new median for entrance to roundabout (west side).



Construction Impacts



Phase 5

Complete improvements north of Tilden Way and Blanding Avenue approach to Tilden.

Provide local traffic detours (**all roadway users**) during roundabout construction and Blanding Avenue road closure approaching Tilden Way.



Construction Impacts

Citywide Impacts

Road closure signs/detour arrows for Fernside and Blanding phase closures

Sidewalk closure signs/detour arrows for pedestrians (one side of Tilden open)

Electronic Message Board Signs to encourage city/island wide traffic to use Encinal Avenue when Fernside is closed (Phase 2 and 3)

Close coordination with AUSD, AC Transit, ACI, Fire/PD on closures/detours



Phase 2/3 citywide detour



Construction Outreach

City

- Outreach to key stakeholders (AC Transit, ACI, City of Oakland/County of Alameda, Utilities)
- Meetings with AUSD and Edison Elementary School
- Letters/Mailers to Businesses/Property Owners/Residents within work area
- ***Virtual Open House Meeting***
- Meet with businesses at Bridgeside Shopping Center
- Construction/Schedule Updates on Project Website
- Press Releases/Social Media
- Monthly updates to stakeholders (and as needed)

Contractor

- Hand deliver notices to impacted businesses/residents
- Parking restriction signage, with dates/hours
- Notify area services with impacts dates/hours (AC Transit, ACI, Emergency, USPS)



Construction Outreach

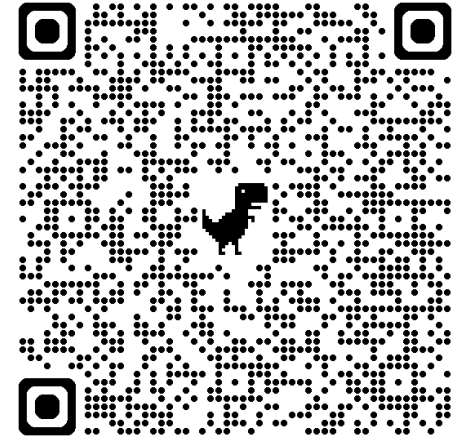
Information on City website: www.alamedaca.gov/clementtilden

The screenshot shows the City of Alameda website page for the Clement Avenue/Tilden Way project. The page has a search bar at the top with the text "Need help finding something?". Below the search bar is a navigation menu with links: HOME, Planning, Building, Transportation, and Clement Avenue/Tilden Way. The main heading is "Clement Avenue/Tilden Way". Below the heading is a map showing the project area with various streets and landmarks. To the right of the map is a "Progress" section with the following text: "Bids were received on June 3 and a construction agreement awarded by City Council on July 15, 2025. The project is currently in the pre-construction phase, with the City working with the contractor in developing a construction schedule and phasing plan. Construction is anticipated to start in Fall 2025." Below the map is a "Project Contact" section with the following text: "Public Works/Engineering (for detail design and construction) Ali Hatefi ahhateli@alamedaca.gov 510-747-7872". Below the "Project Contact" section is a "More Information" section with the following text: "For project updates via email, subscribe directly [here](#)." At the bottom of the page, there is a note: "The City will be hosting a web-based open house meeting via MS Teams on Tuesday, September 30, 2025, at 6:00 P.M. to present the improvements being constructed for the project, impacts during construction, and answer any questions."

- Schedule/updates on project website
- Notices provided when updates are made to website
- Background information
- Past public meetings/City Council meetings
- Website Search: Alameda Clement Tilden

← Project Contacts

← Register for email updates (Next Slide)



Construction Outreach

How to register for updates via email? Start at www.alamedaca.gov/clementtilden

More Information

For project updates via email, subscribe directly [here](#).



or go to www.alamedaca.gov/subscribe

HOME / **Subscribe**

Subscribe

Sign up for email updates:

Enter your email address, select the topics you are interested in, and click Next at the bottom of this page.

Enter your email address here:*

name@example.com



scroll down...

Transportation

- ☐ Bicycle/Pedestrian Bridge
- ☐ Transp - Active Transportation Plan
- ☐ Transp - Auto Parking
- ☐ Transp - Central Outreach
- ☐ Transp - Clement Ave Outreach
- ☐ Transp - Commercial and Slow Streets
- ☒ Transp - Clement/Tilden
- ☐ Transp - Electric Vehicles
- ☐ Transp - General Interest

Subscribe

Thank you for signing up.

Receive email
confirmation



Contacts

Construction Contacts

City of Alameda Project Manager

(General Project Information)

Ali Hatefi

510-747-7972

ahatefi@alamedaca.gov

Construction Manager (4Leaf)

(Construction Information/Questions/Concerns)

Gene Barry

510-856-6820

gbarry@4leafinc.com

Construction contractor (Bay Cities Paving & Grading) to provide their own notices/contacts



Information/Links

Project Website: www.alamedaca.gov/clementtilden

Roundabouts: www.alamedaca.gov/roundabouts

Safer Streets: www.alamedaca.gov/saferstreets

Vision Zero: www.alamedaca.gov/visionzero

Subscribe to updates: www.alamedaca.gov/subscribe

