

Clement Avenue Extension and Tilden Way

Project Kickoff Meeting

2/17/2022

Funded by Measure BB – Alameda County Transportation Commission



Desired Outcomes

- Define project
 - Limits and understanding
 - Goals
 - Conditions/issues
 - Intended outcomes and priorities
- Share initial ideas and constraints
- Verify scope, anticipated schedule, next steps

Agenda

- **Introductions**
- Project Background
- Project Goals
- Initial Ideas & Constraints
- Next Steps

Introductions

- City of Alameda
 - Gail Payne, Senior Transportation Coordinator
 - Robert Vance, Deputy Public Works Director
 - Tawfic Halaby, Senior Civil Engineer
 - Areli Vazquez-Munoz, Engineer-in-Training
- Kittelson
 - Mike Alston
 - Laurence Lewis
 - Hermanus Steyn
- AC Transit
 - David Berman
- County of Alameda
 - Rick Yeung

Project Stakeholders

- City of Alameda
- AC Transit
- County of Alameda
- Alameda Unified School District/Edison School
- Nob Hill shopping area
- Bike Walk Alameda
- Community Action for a Sustainable Alameda
- Downtown Area Business Association
- Members of the public
- *Who else?*

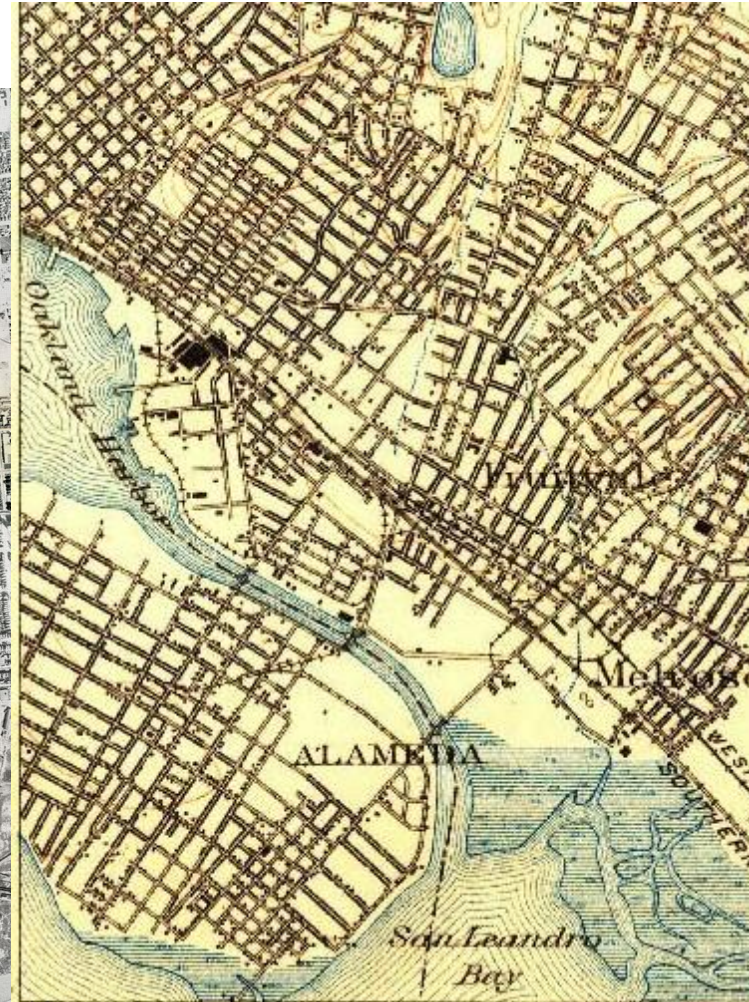
Agenda

- Introductions
- **Project Background**
- Project Goals
- Initial Ideas & Constraints
- Next Steps

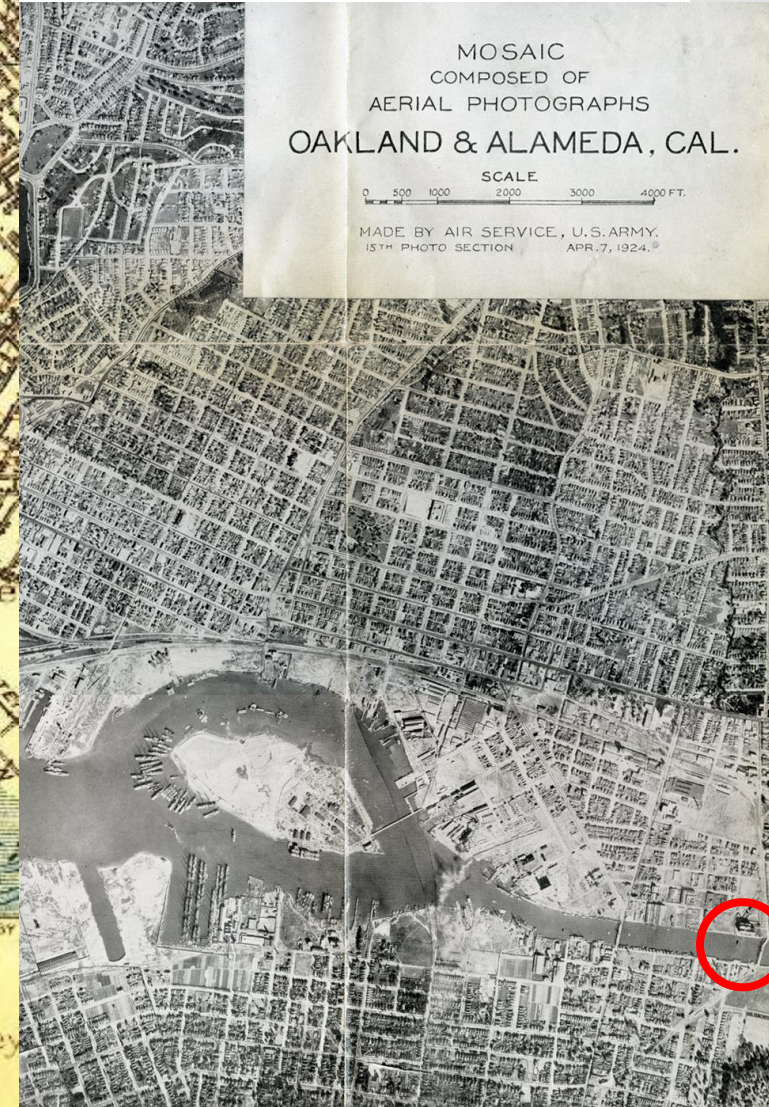
Project
Background
....way back...



Project Backgroundway back...



2 1/2" 15'
ENGRAVED APR. 1897 BY
Henry Gannett, Chief Topographer.
R. U. Goode, Geographer in charge.
Triangulation by U.S. Coast and Geodetic Survey
Topography by W. D. Johnson and W. H. Otis.
Surveyed in 1893-94.
Culture revised in part in 1913-14.
R. B. Marshall, Chief Geographer.



MOSAIC
COMPOSED OF
AERIAL PHOTOGRAPHS
OAKLAND & ALAMEDA, CAL.
SCALE
0 500 1000 2000 3000 4000 FT.
MADE BY AIR SERVICE, U.S. ARMY.
15TH PHOTO SECTION APR. 7, 1924.

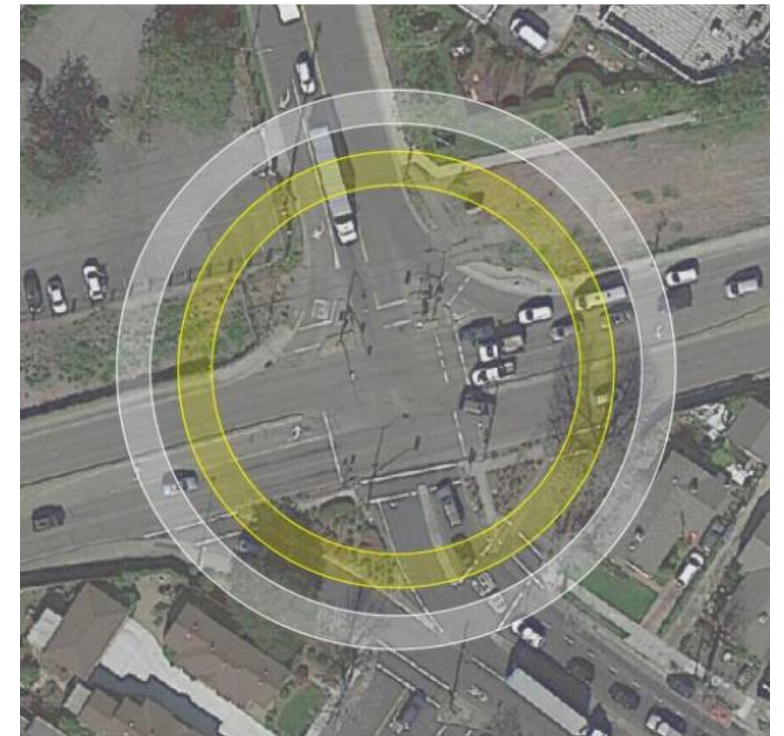
Project Background – Cross Alameda Trail

- Completion of Cross Alameda Trail
 - Union Pacific property acquisition
 - Environmental clean-up
 - Extension of Clement Avenue
 - Measure BB = \$10 million grant by Alameda CTC



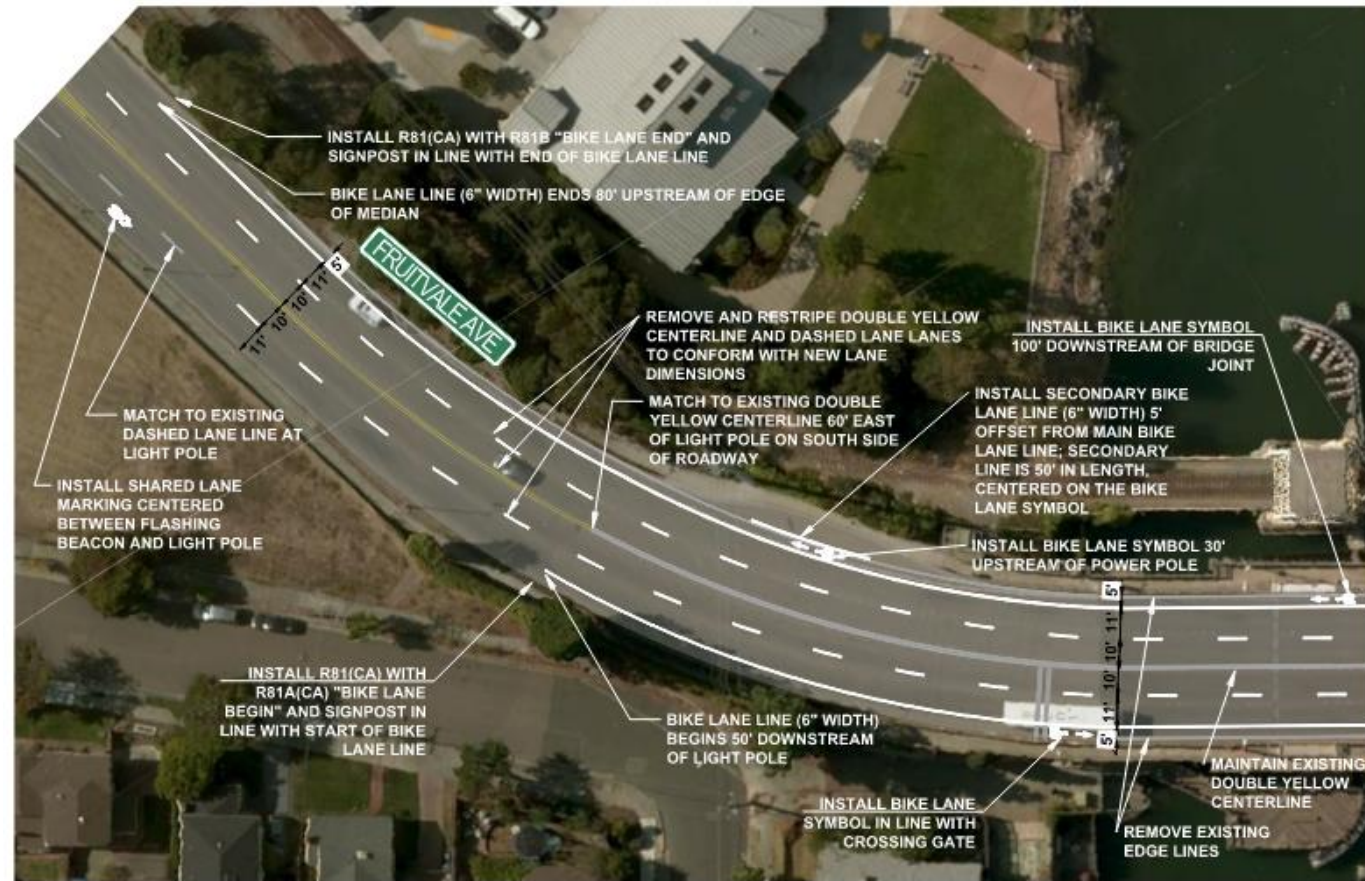
Project Background – Roundabout Screening

- Tilden/Fernside is a high crash intersection
- Kittelson vetted roundabout footprint as part of network screening



Project Background – Miller- Sweeney Restriping

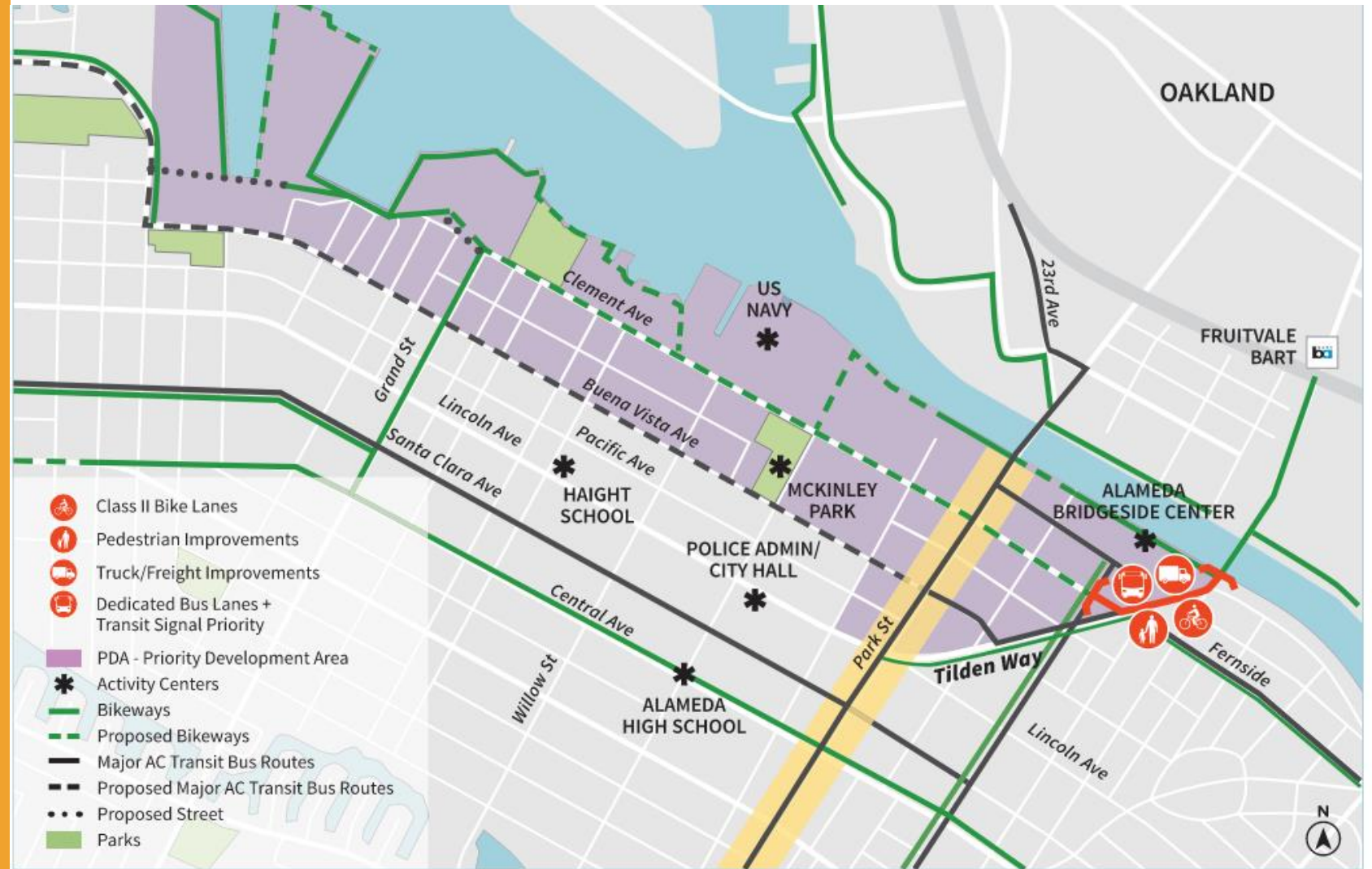
- Miller-Sweeney Bridge to be restriped with bike lanes and four-lane cross-section



Agenda

- Introductions
- Project Background
- **Project Goals**
- Initial Ideas & Constraints
- Next Steps

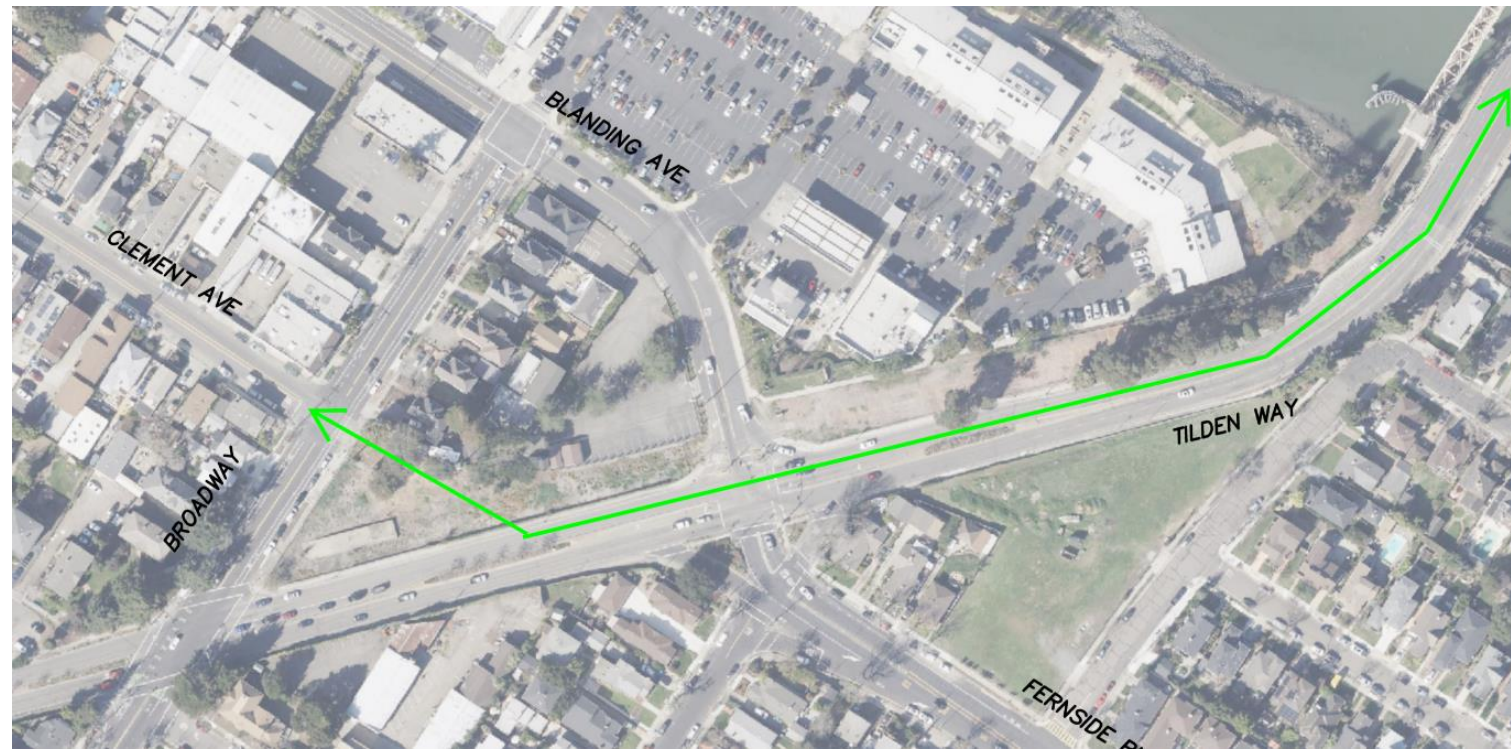
What is the project?



Source: Alameda CTC Grant Application, 2016

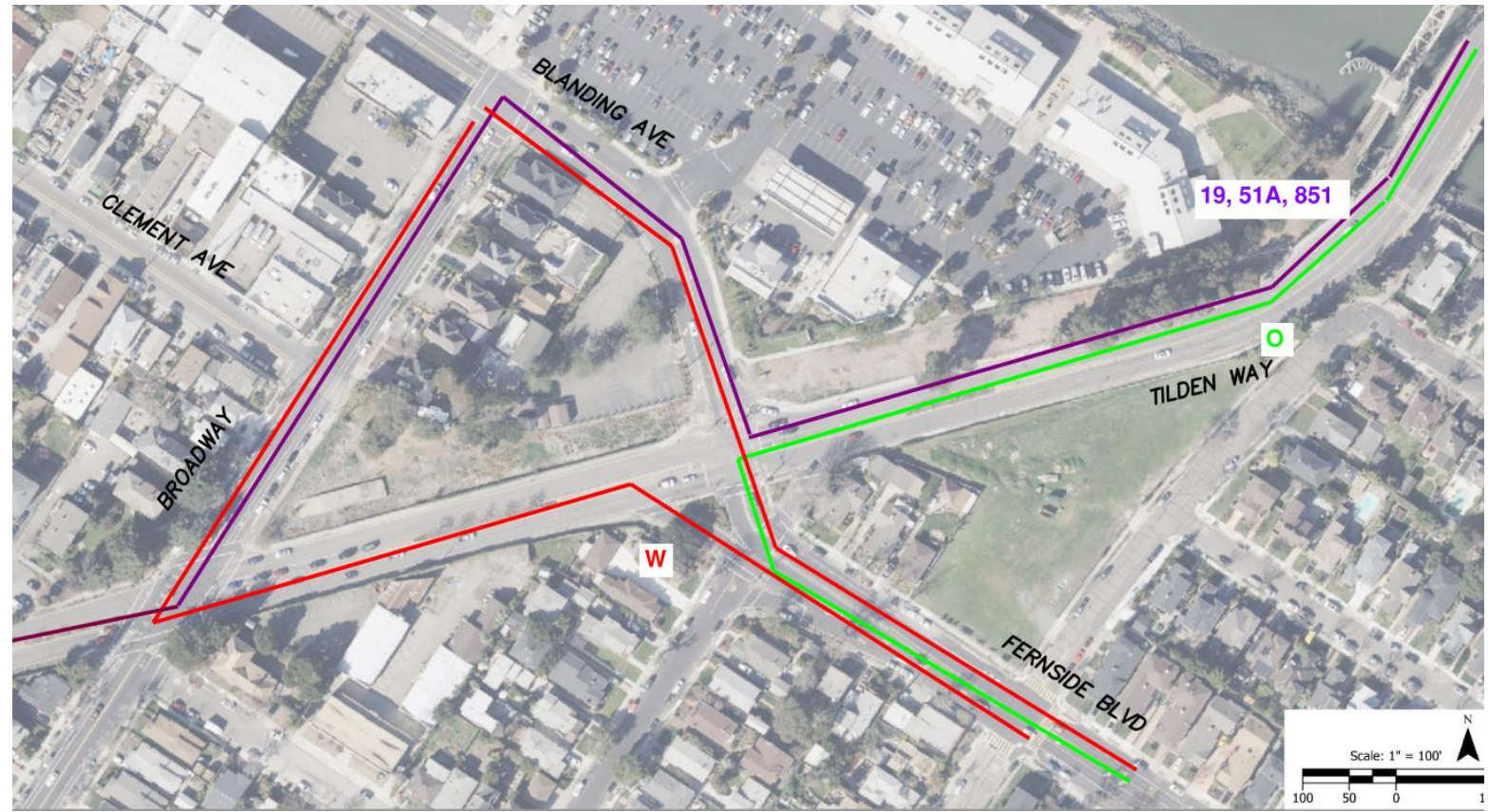
Project User Considerations

- **People biking/walking:** continuation of the Cross Alameda Trail



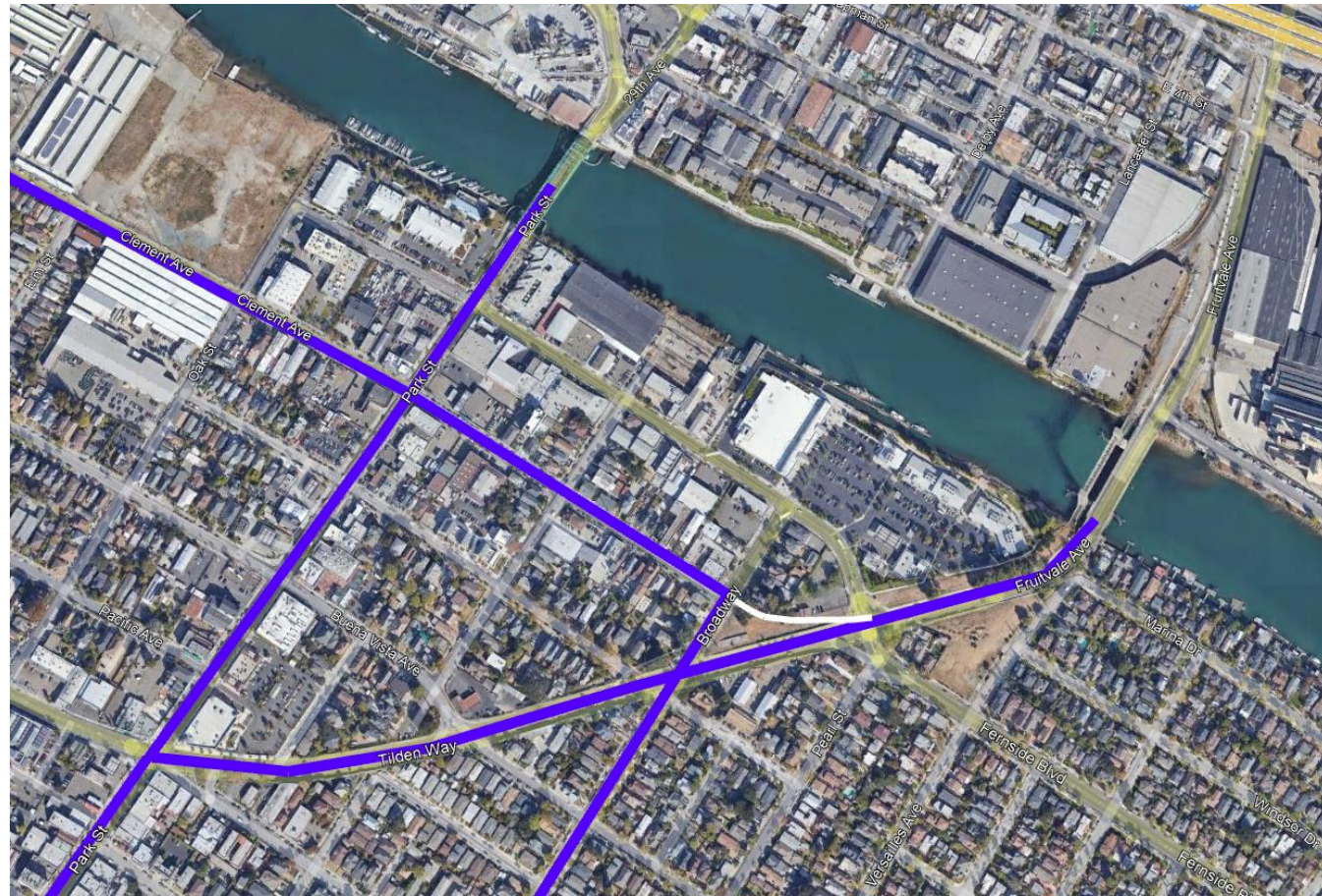
Project User Considerations

- **Transit:** Convergence of many lines; opportunity for improvements?



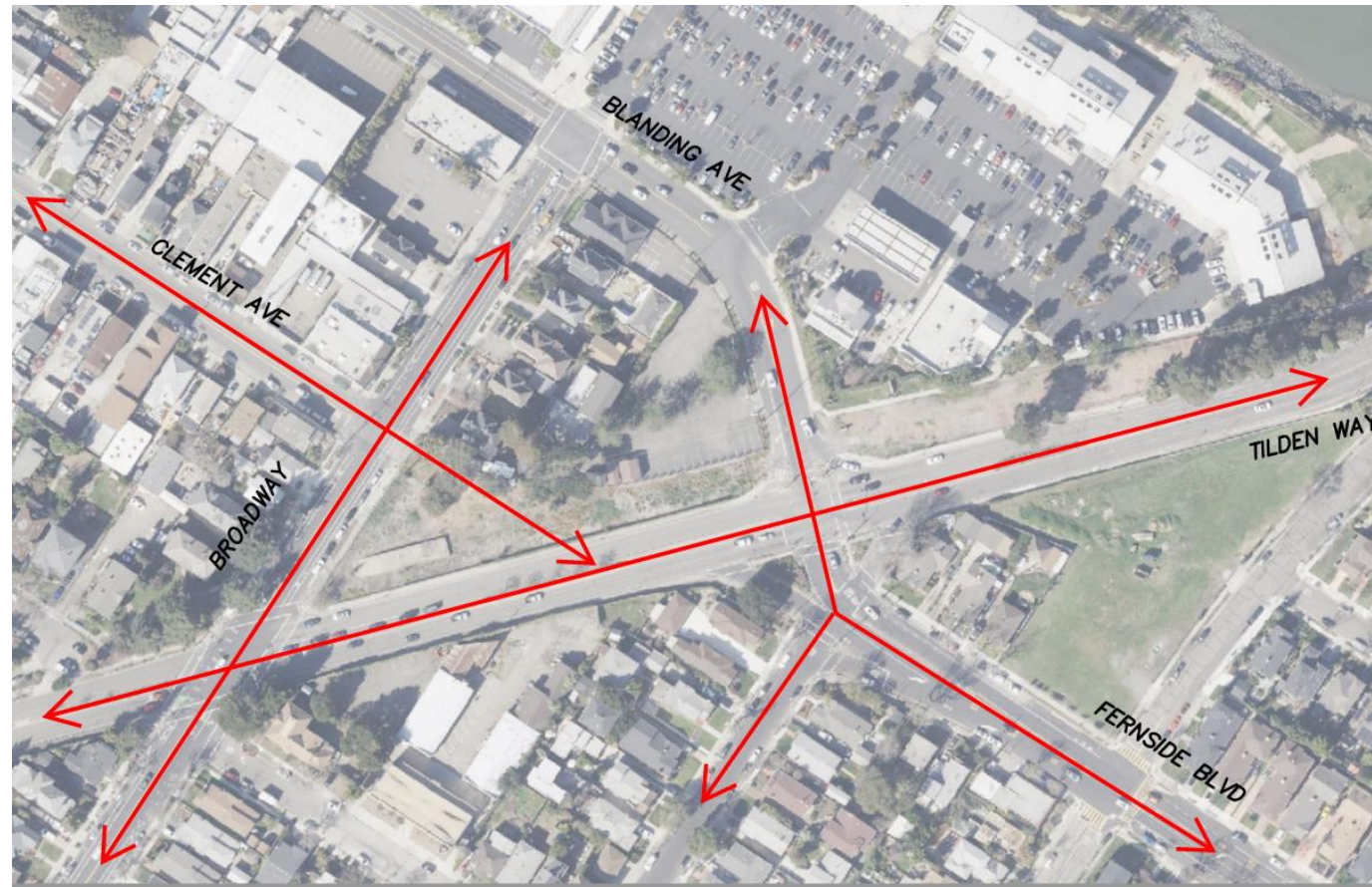
Project User Considerations

- **Trucks:** Clement Avenue truck route proposed



Project User Considerations

- **Motor vehicles:** Is full access a *must-have*?



Project Goals

- What is YOUR highest priority for the project?
- What are potential project risks?

- City seeks to:

- Promote safety by prioritizing Vision Zero
- Provide mobility for all modes, including AC Transit buses and trucks
- Comply with City plans & policies

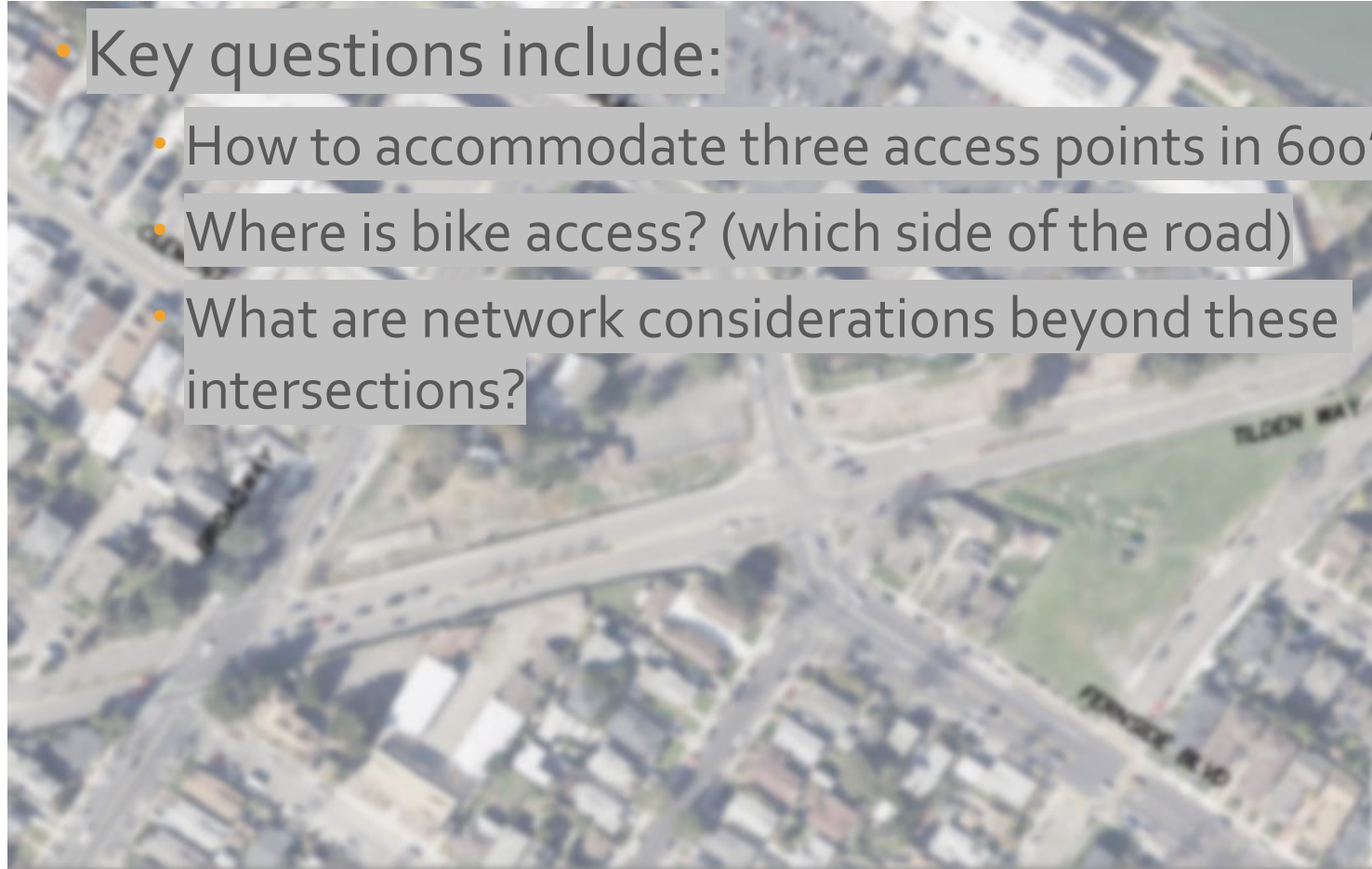


Agenda

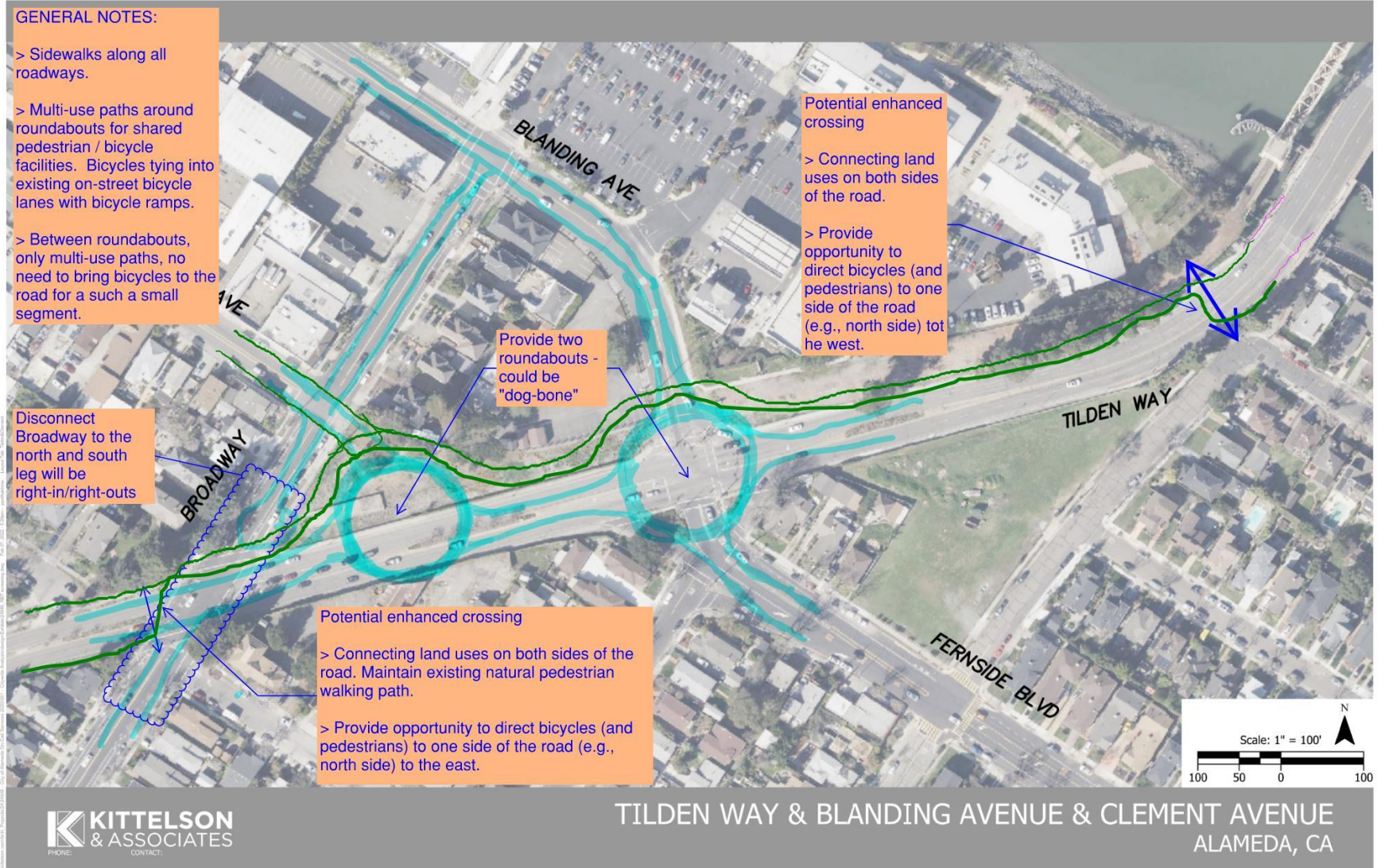
- Introductions
- Project Background
- Project Goals
- **Initial Ideas & Constraints**
- Next Steps

Initial Ideas

- Key questions include:
 - How to accommodate three access points in 600'?
 - Where is bike access? (which side of the road)
 - What are network considerations beyond these intersections?



Initial Ideas A



Initial Ideas B

GENERAL NOTES:

- > Sidewalks along all roadways.
- > Multi-use paths around roundabouts for shared pedestrian / bicycle facilities. Bicycles tying into existing on-street bicycle lanes with bicycle ramps.
- > Between roundabouts, only multi-use paths, no need to bring bicycles to the road for a such a small segment.

Similar Concept - moving western roundabout farther to the west.

Clement tying into Broadway

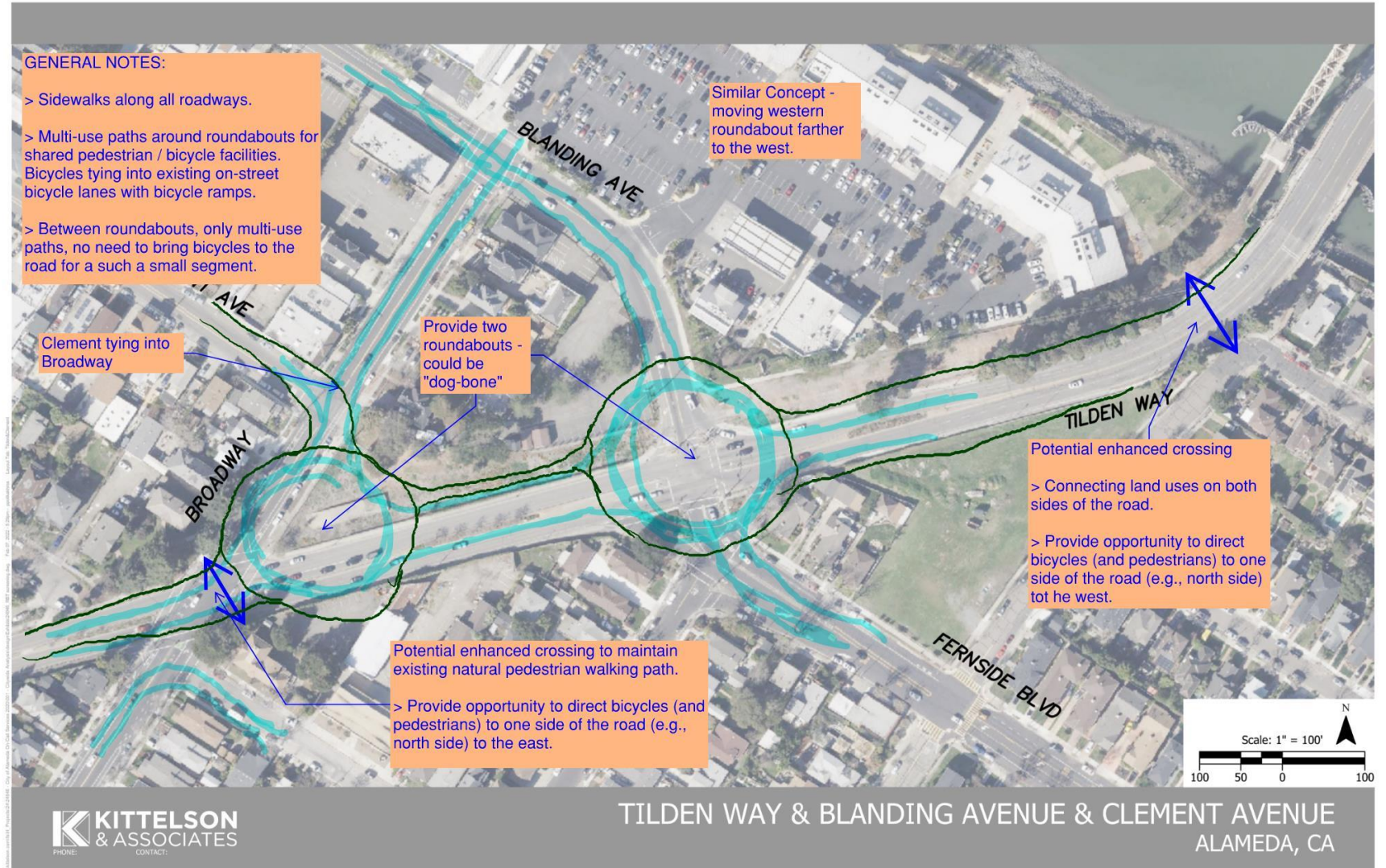
Provide two roundabouts - could be "dog-bone"

Potential enhanced crossing

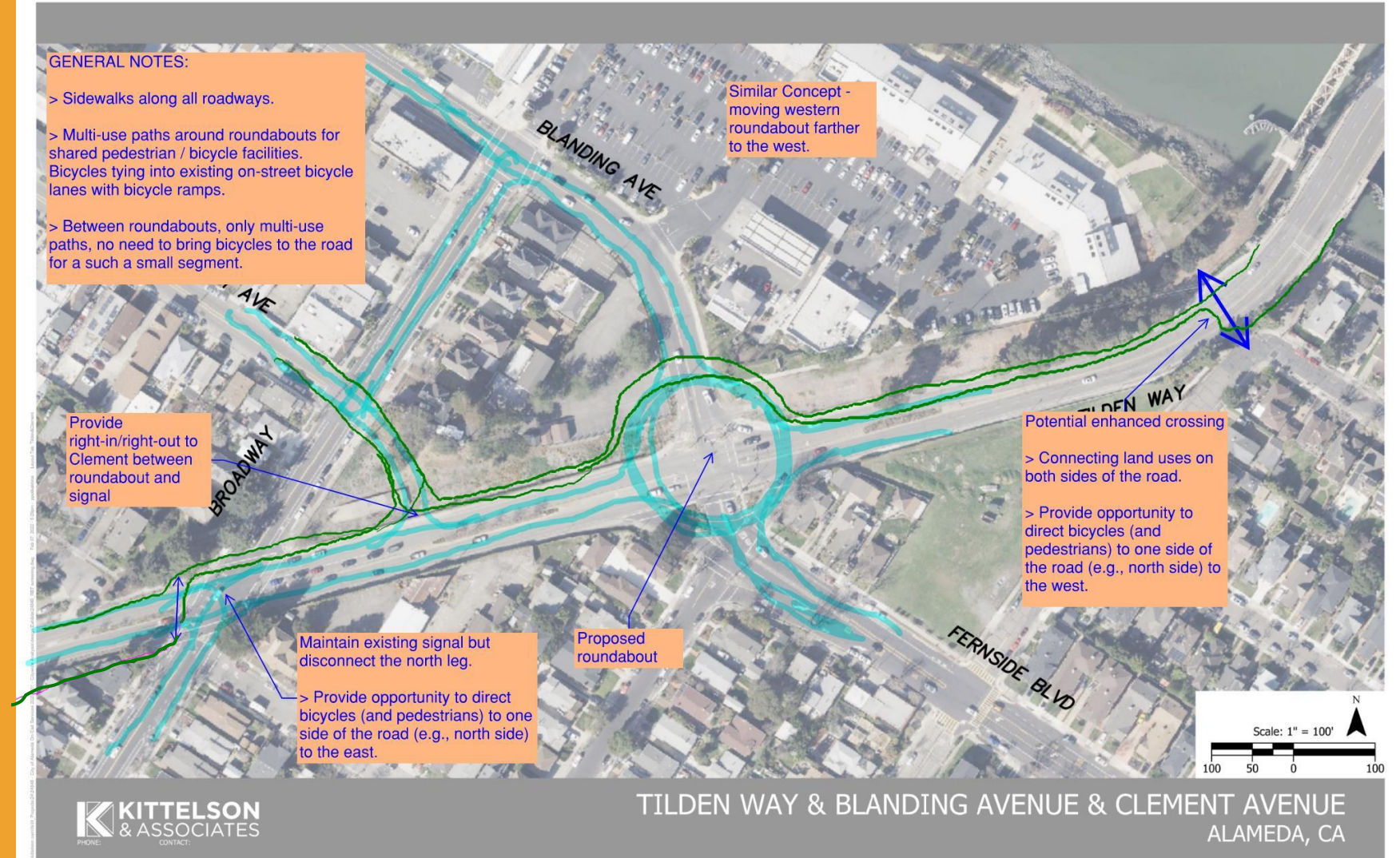
- > Connecting land uses on both sides of the road.
- > Provide opportunity to direct bicycles (and pedestrians) to one side of the road (e.g., north side) to the west.

Potential enhanced crossing to maintain existing natural pedestrian walking path.

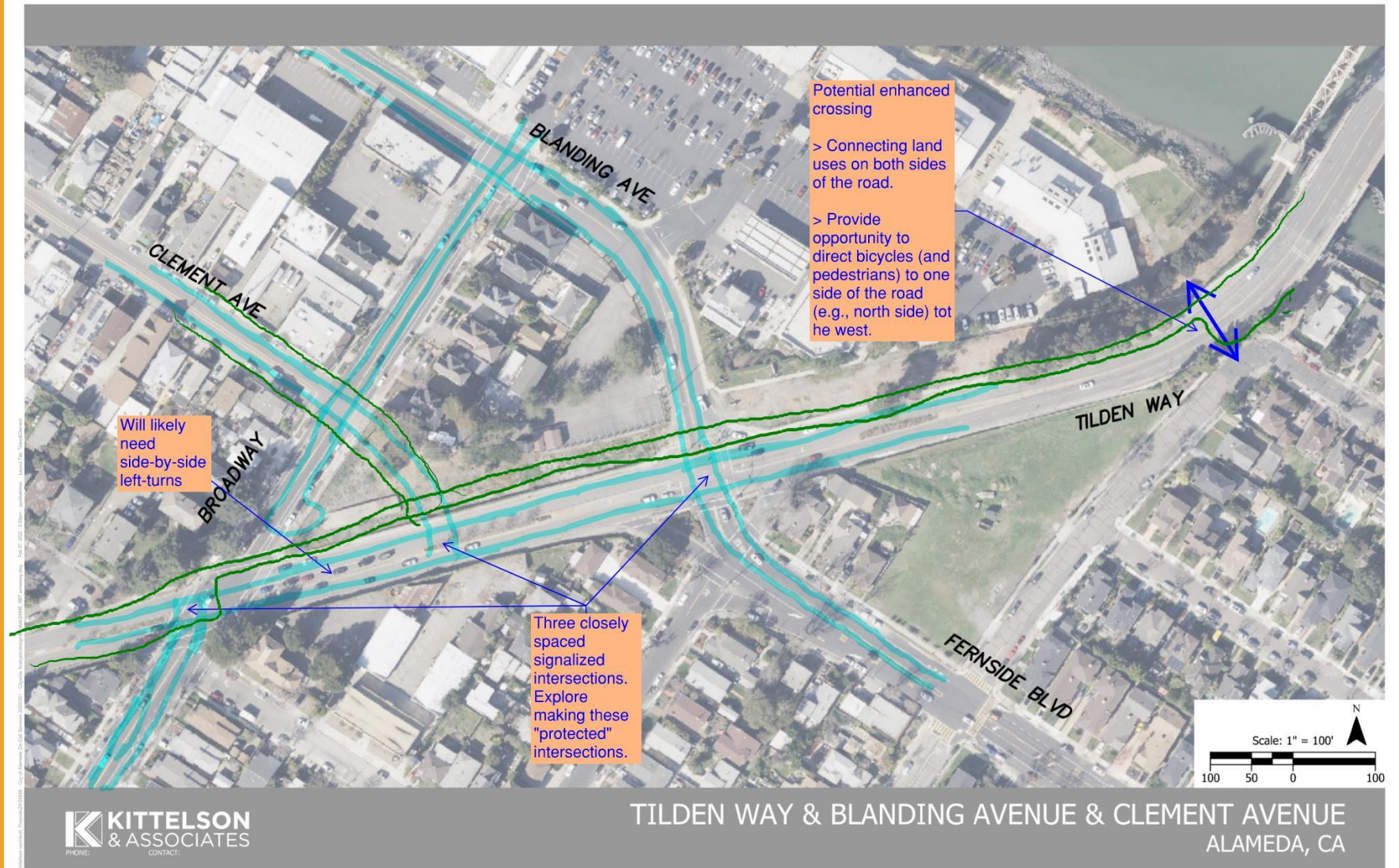
- > Provide opportunity to direct bicycles (and pedestrians) to one side of the road (e.g., north side) to the east.



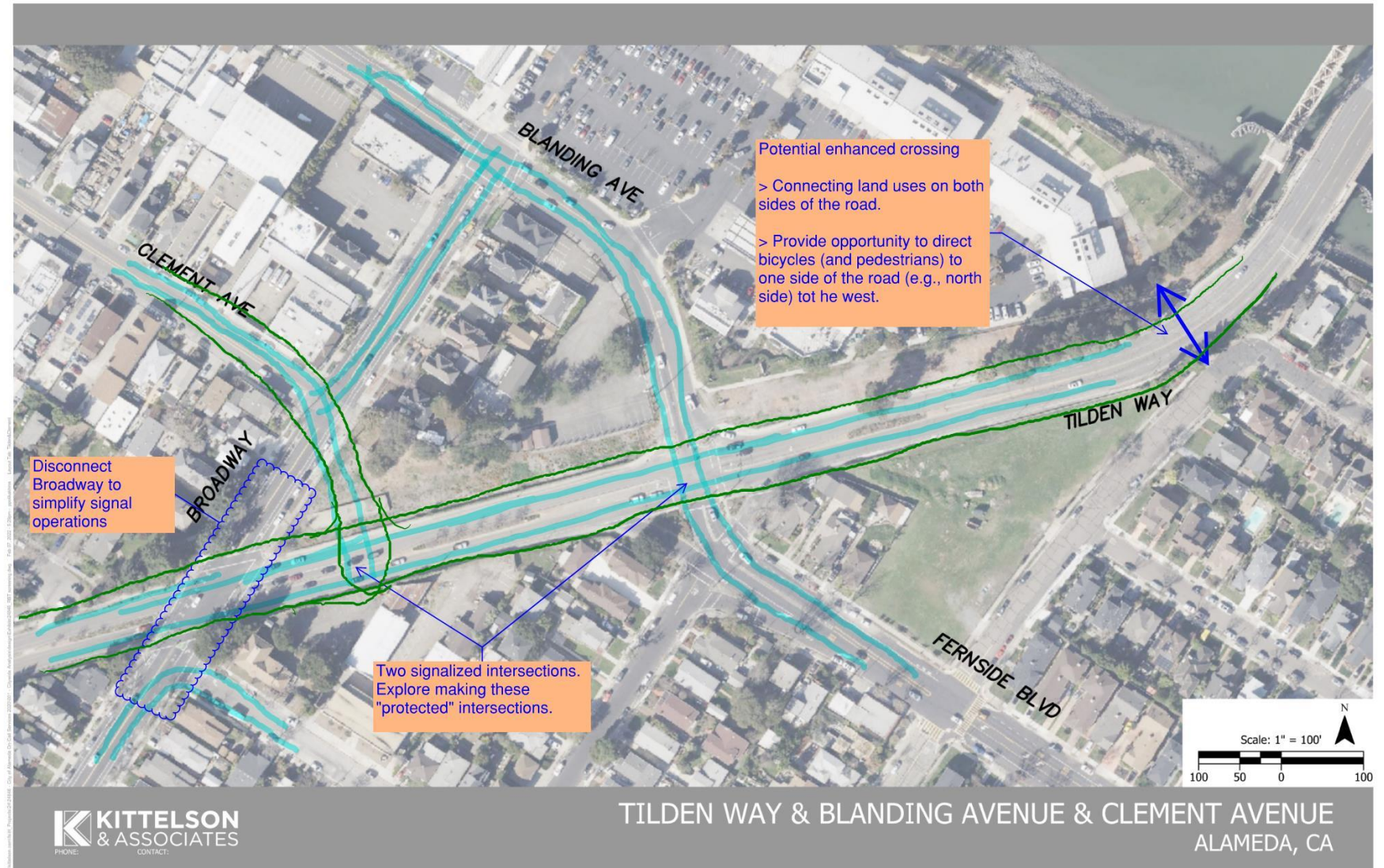
Initial Ideas C



Initial Ideas D



Initial Ideas E

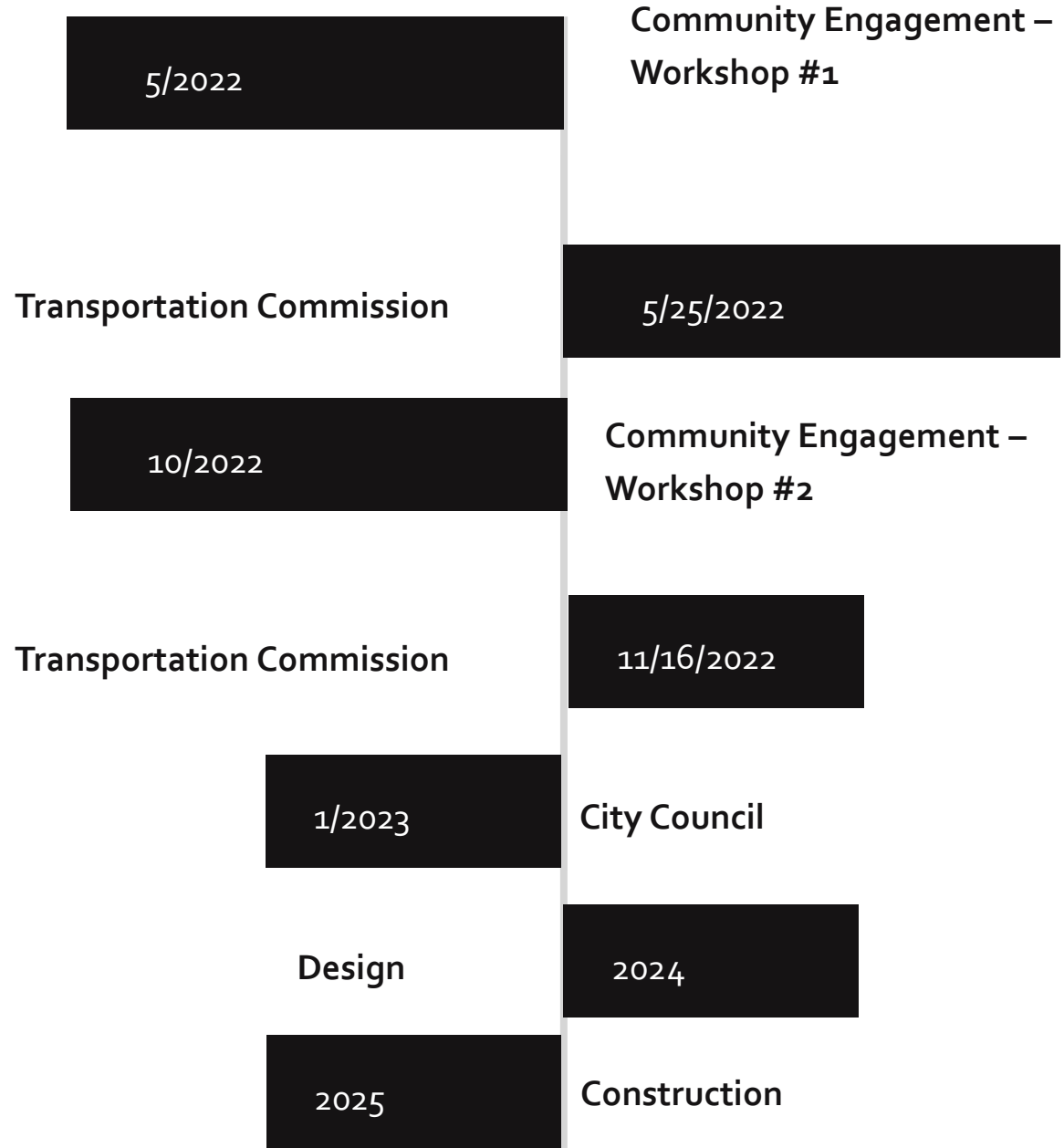


Agenda

- Introductions
- Project Background
- Project Goals
- Initial Ideas & Constraints
- **Next Steps**

Next Steps

- Existing conditions
- Conceptual alternatives
- Community engagement (2 rounds)
 1. Gather input & share ideas
 2. Share concept(s)
- Concept Refinement
- Select Preferred Alternative



Thank you!

Project webpage:

www.alamedaca.gov/ClementTilden

Mike Alston, malston@kittelso.com

Gail Payne, gpayne@alamedaca.gov

