



Clement Avenue/Tilden Way Project

January 25, 2023

Introduction

Clement Avenue Extension Alternatives at Tilden Way

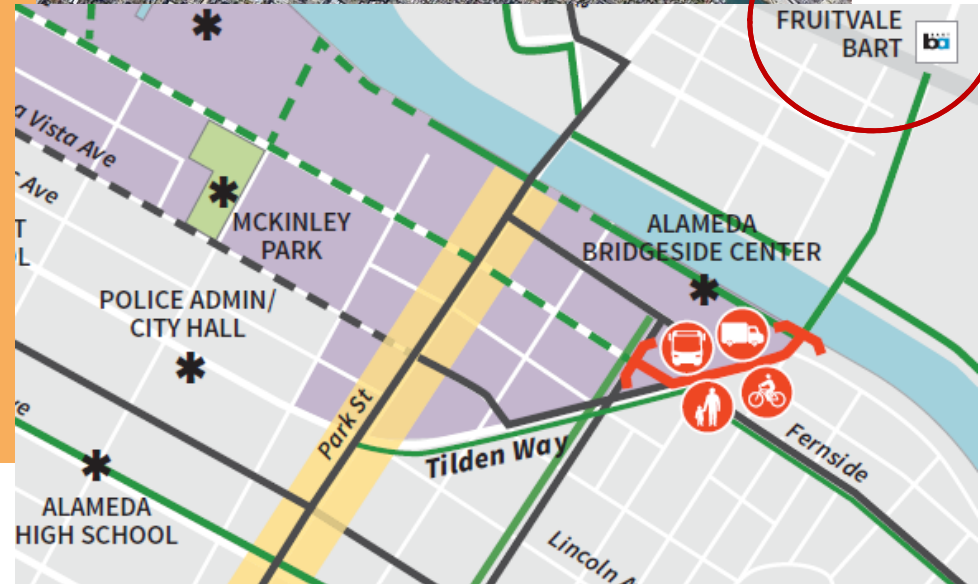
Project Team:

- City of Alameda
- Kittelson & Associates, Inc
- Stakeholder Participants:

City, AC Transit, Alameda Housing Authority, BART, Bike Walk Alameda, County, DABA, Edison School, Members of the Public

Engagement and Outreach Update:

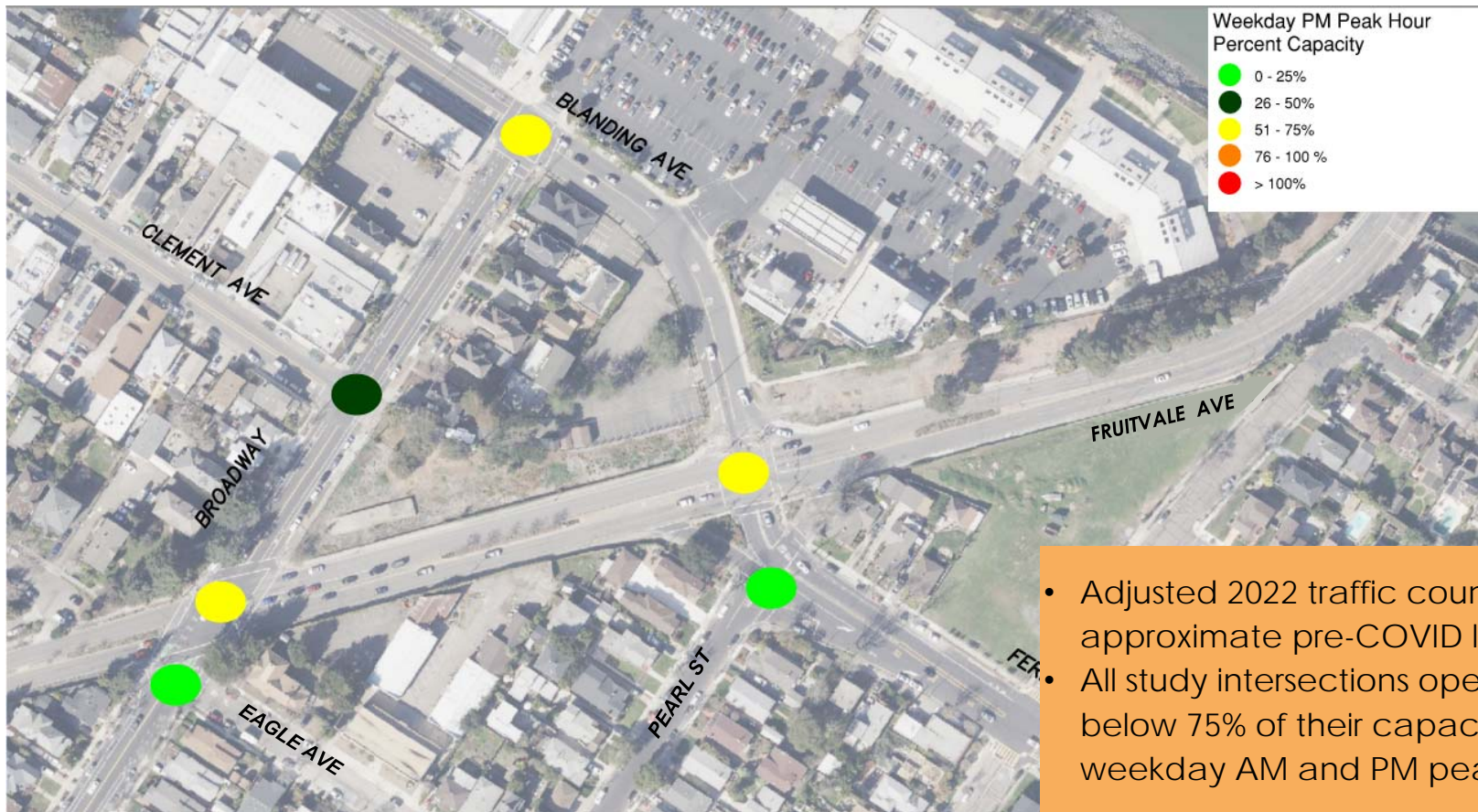
- Letter to adjacent properties
- Outreach via social media, emails and sandwich boards
- Website: www.alamedaca.gov/ClementTilden



Study Area AC Transit Bus Service



Traffic Operations



- Adjusted 2022 traffic counts to approximate pre-COVID levels
- All study intersections operate at or below 75% of their capacity during the weekday AM and PM peak hour

Project Goals and Intended Outcomes

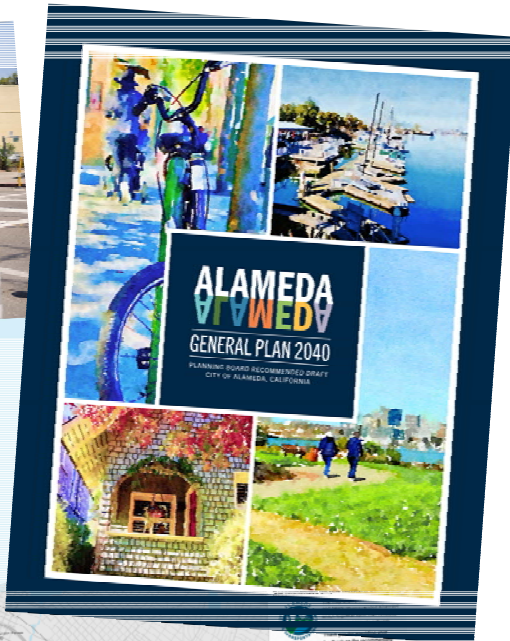
- Prioritize **safety**
- Improve **mobility** for all roadway users
- Improve **bicycle and pedestrian** access
- Provide **flood reduction** and **landscaping** opportunities
- Reduce **greenhouse gas** emissions
- Comply with City plans and policies



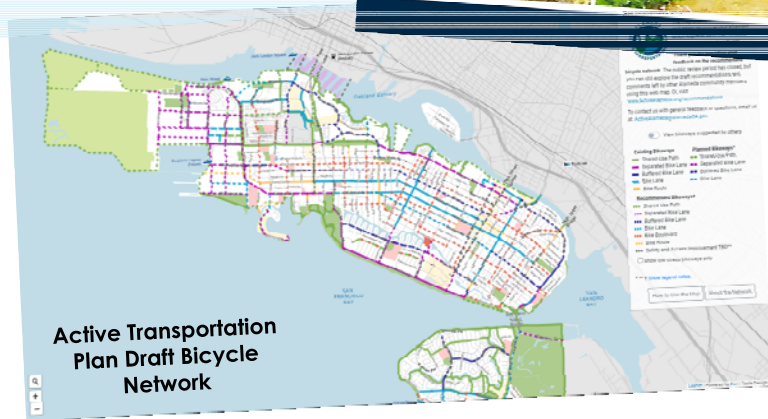
Alameda
Vision Zero Action Plan

VISION
ZERO
ALAMEDA
SAFER STREETS FOR ALL

November 9, 2021



ALAMEDA
GENERAL PLAN 2040
PLANNING BUREAU DOCUMENTED DRAFT
CITY OF ALAMEDA, CALIFORNIA



Active Transportation
Plan Draft Bicycle
Network

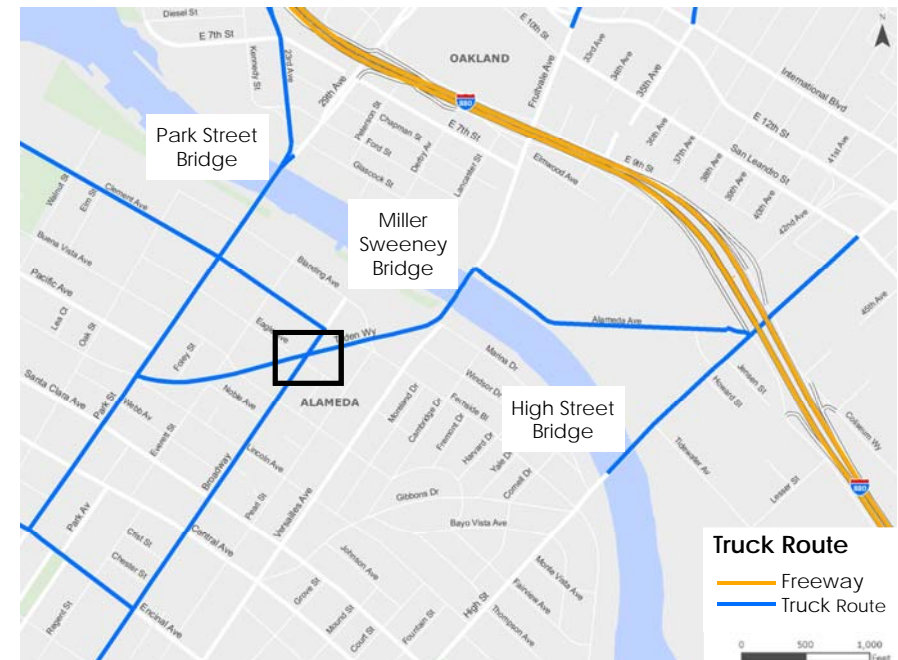
Truck Connections

Designated Truck Routes

- Alameda: Park St. Bridge and Miller-Sweeney Bridge
- Oakland: Park St. Bridge, Miller-Sweeney Bridge, and High St. Bridge

Truck Usage

- Trucks east of Broadway are funneled to Miller-Sweeney Bridge
- Trucks west of Broadway use Park Street (heavy truck usage on Park St)
- Clement eastbound truck extension may be redundant



Note: Sharp right turn from Tilden to Broadway is on designated truck route.

Public Input

(2 rounds of outreach)

Virtual Workshop

- 1st: 31 attendees and 21 responses
- 2nd: 32 attendees and 14 responses

In-Person Open Houses

- 1st: 19 attendees
- 2nd: 15 attendees

Online Surveys

- 1st: 175 respondents
- 2nd: 116 respondents

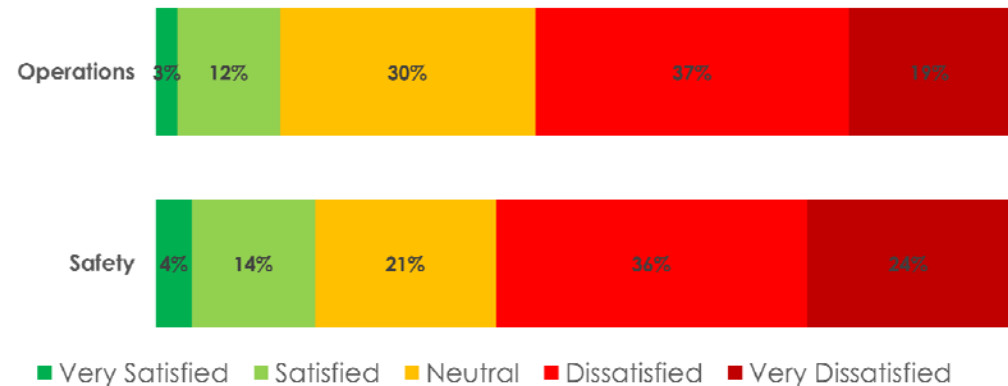
Desires:

- Safety and slower speeds
- Connectivity for bicyclists
- Safer pedestrian crossings
- More greenery, open space and dog park

Concerns:

- Through traffic and speeding on Clement Ave.
- Increase of truck traffic with extension
- Drivers' unfamiliarity with roundabouts
- Speeding along Pearl St and Fernside Blvd

How satisfied are you with the Clement/Tilden project area?



Background

- Measure BB grant for \$10 million
- Union Pacific property acquisition
- Environmental clean-up
- Fill gap in active transportation and truck network



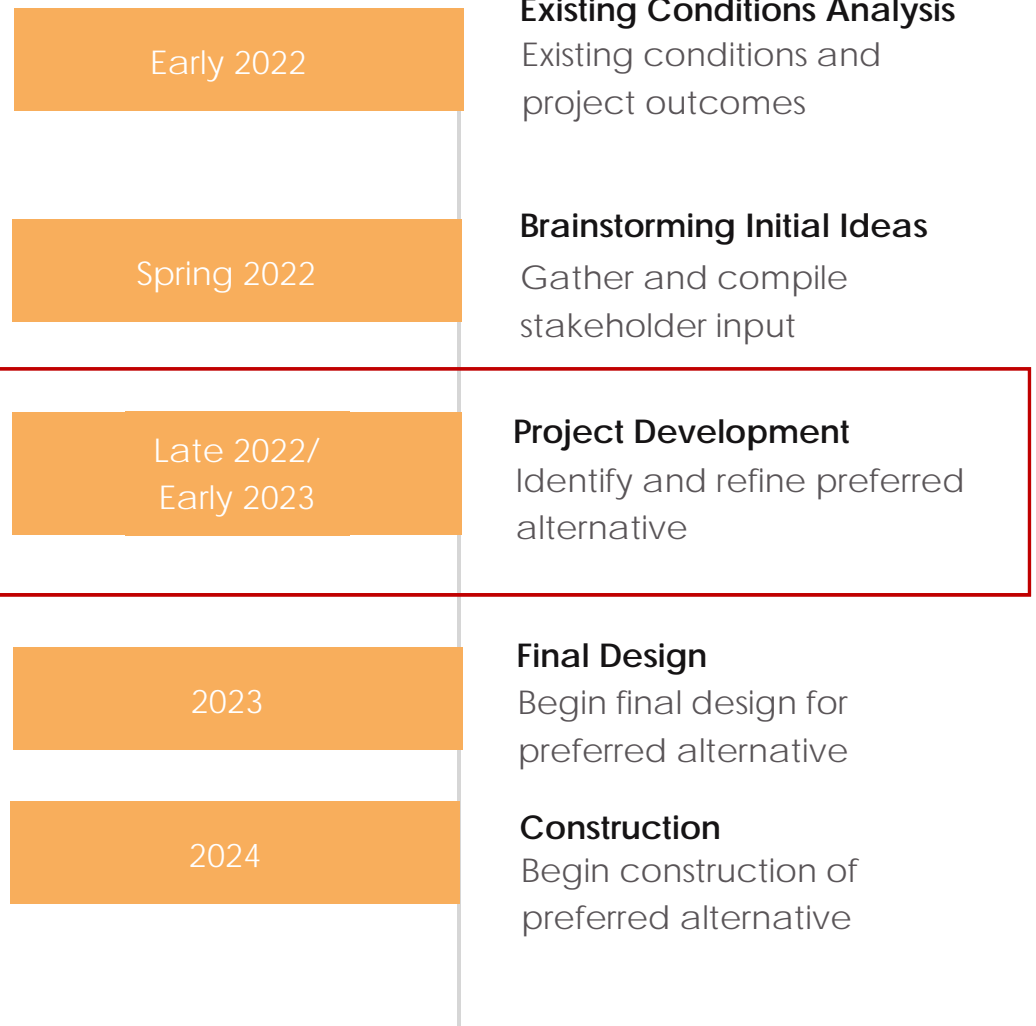
MODES

| | |
|--|---|
|  Bus Route |  Bus Stop |
|  Truck Route |  Proposed Truck Route |
|  Existing Bike Lane or Path |  Proposed Bike Lane or Path |

**Clement Avenue & Tilden Way
Existing Routes/Facilities by Mode**

Project Timeline

Project webpage:
www.alamedaca.gov/ClementTilden



Draft Concept

