

December 4, 2023



# Fernside Boulevard Traffic Calming & Bikeways Project

Community Meeting #1

**Parametrix** **Parisi**  
TRANSPORTATION CONSULTING

## Agenda

### 1. Presentation

- About the project
- Existing conditions
- Improvement toolkit
- Next steps

### 2. Open House

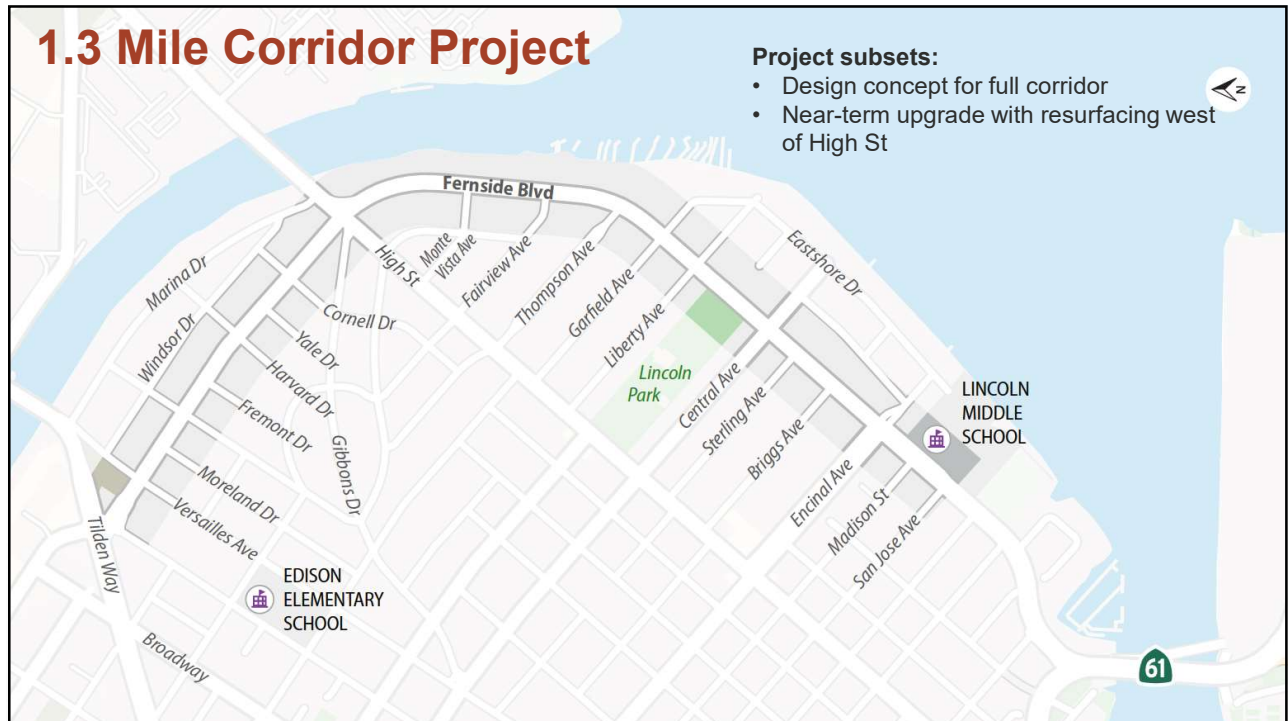
- Tell us what you think!
- Staff and consultant team to listen and answer questions



*Fernside Blvd. & Versailles Ave. Intersection, looking west.*



# About the project



# Why are we here?

**Project goal:** reduce traffic speeds and improve safety and mobility for all

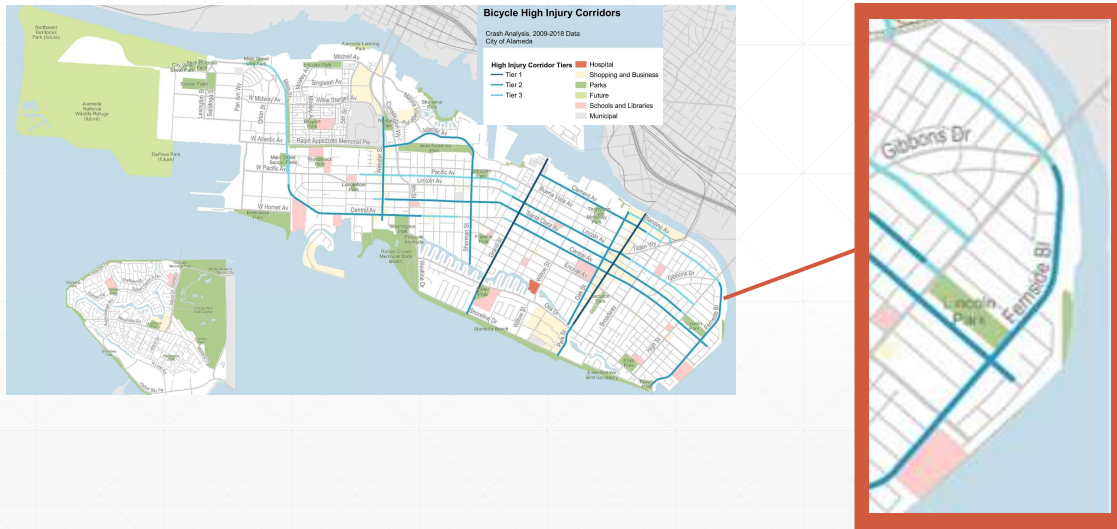
- Coordinate with pavement resurfacing
- Implement plans and policies:
  - Vision Zero Action Plan
  - Active Transportation Plan
  - City Council Strategic Plan
  - San Francisco Bay Trail (*regional*)



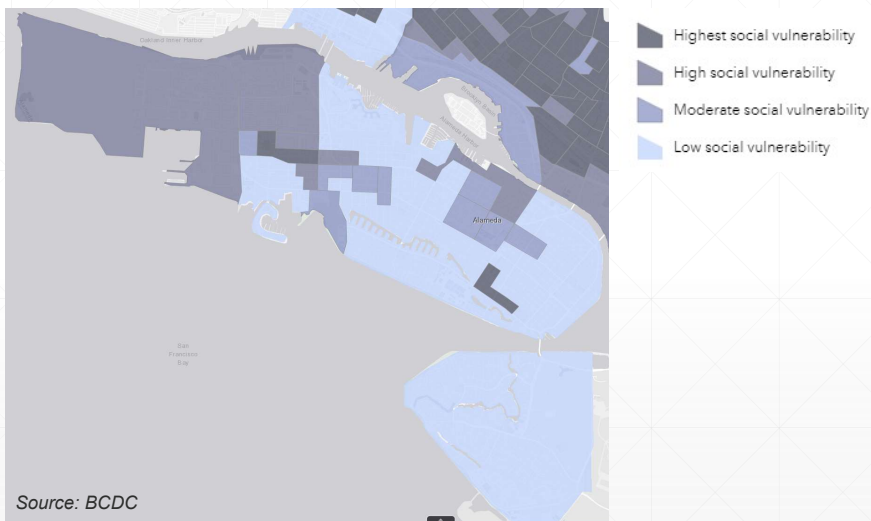
## Fernside is a Tier 3 High Injury Corridor, All Modes



## Fernside has Tiers 2 & 3 Bicyclist High Injury Corridors



## Fernside not in an Equity Priority Area



## Fernside in Active Transportation Plan: Low-Stress Bikeway

### 2030 Low-Stress Backbone Bikeway Network



- Adopted plan shows Fernside with a protected bike lane
- Key to the 2030 Low-Stress Backbone Network for all ages and abilities
- Part of regional San Francisco Bay Trail

## Community Concerns about Street Safety



# History

---

## History

Late 1800s: A.A. Cohen's 106-acre Fernside estate



# History



Fernside Estate: ca. 1900



Fernside Loop: 1911

Fernside Blvd.



Eastshore Fill: 1950s



# Existing Conditions

## Fernside Boulevard Recent Enhancements

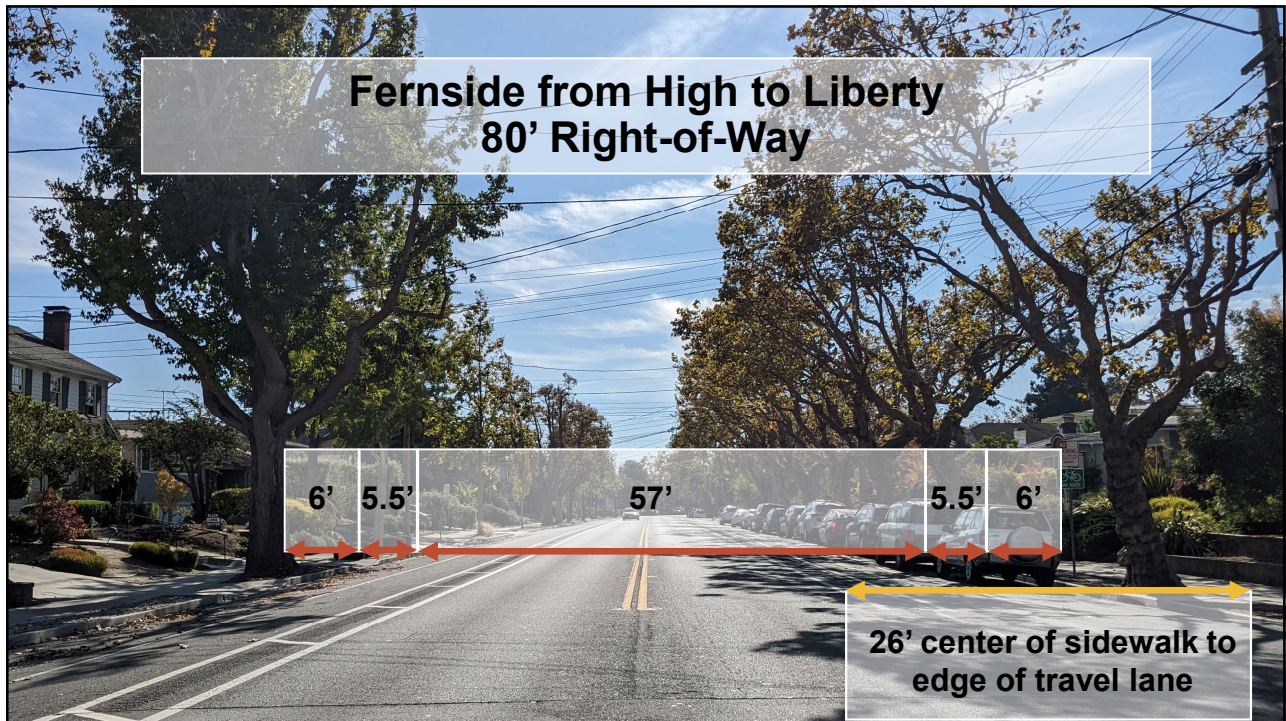
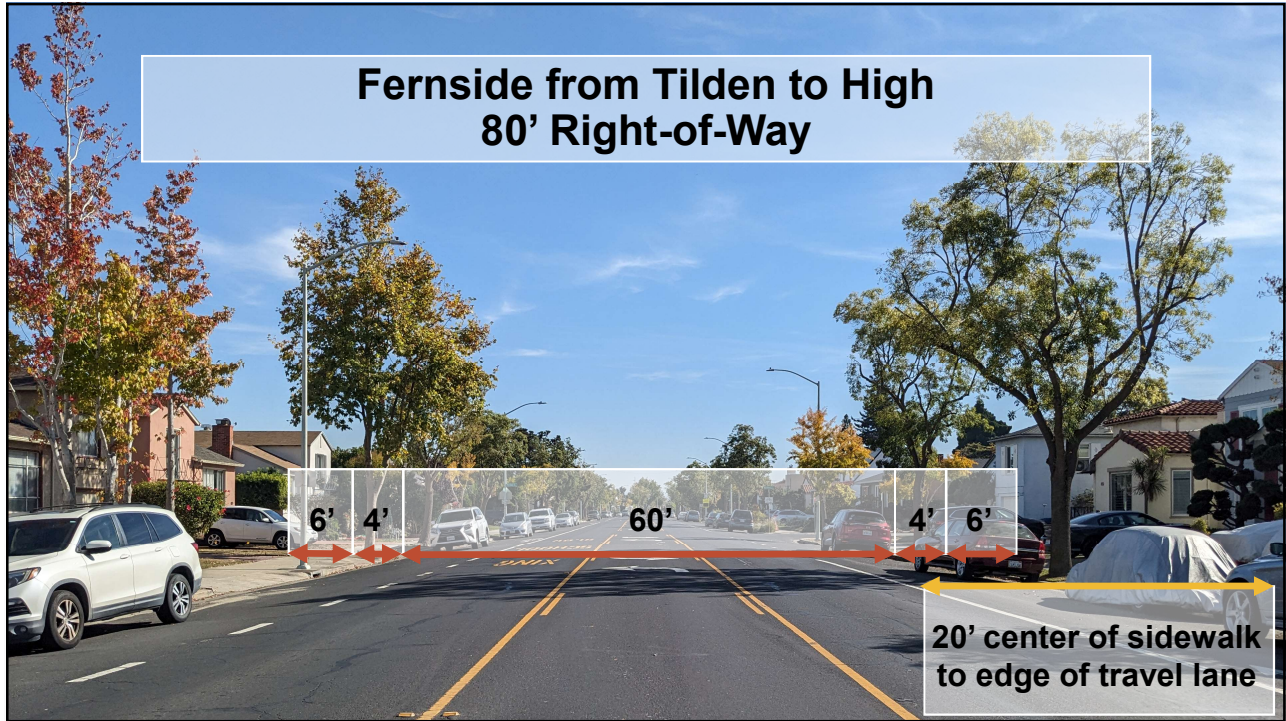
- At Versailles Ave:
  - 2010: Uncontrolled crossing upgraded to high-visibility striping
  - 2013: RRFB and concrete crosswalk protection improvements
- At Cambridge Dr.
  - 2014: Speed feedback sign below posted speed limit sign
- At Harvard Ave:
  - 2013: Uncontrolled crosswalk at Harvard Ave installed
  - 2021: RRFB and concrete crosswalk protection improvements
- At High St:
  - 2013: Removed second travel lane merge west of High St.
- East of High St:
  - 2019: Upgrade to buffered bike lanes as part of roadway repaving
- Between Otis and Lincoln Middle School
  - 2009: Two-way bikeway access to school

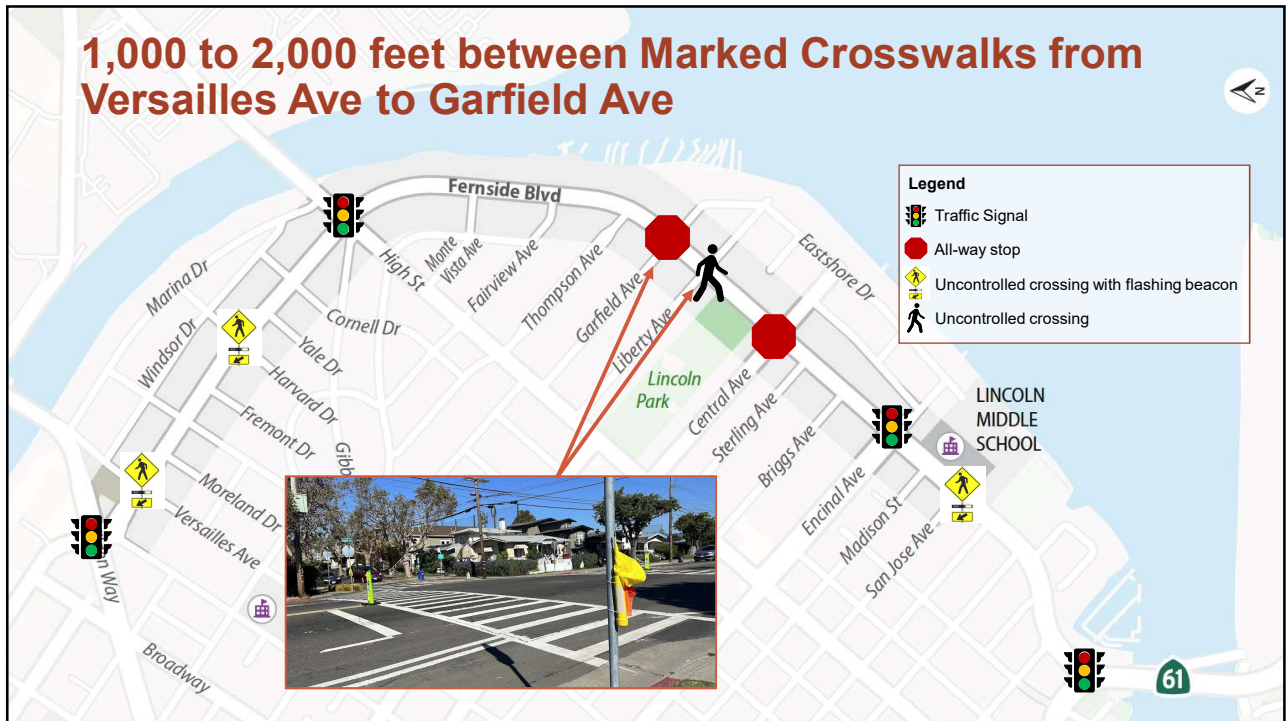
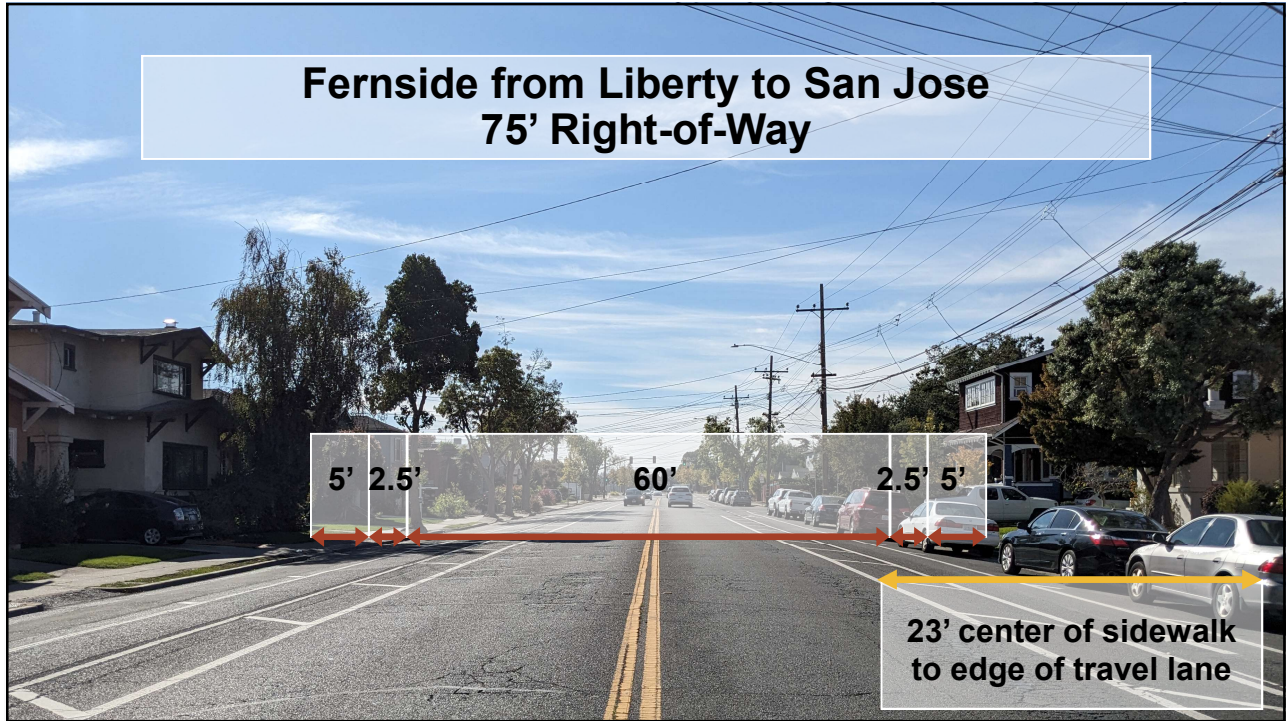


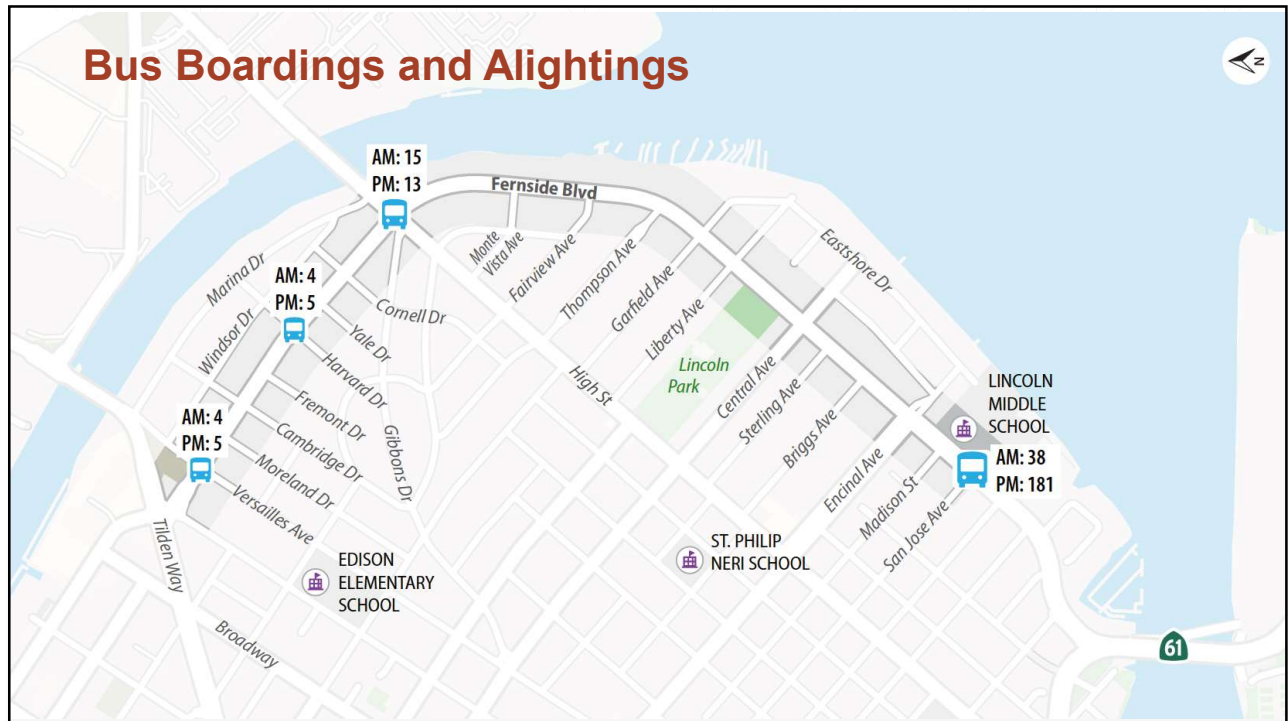
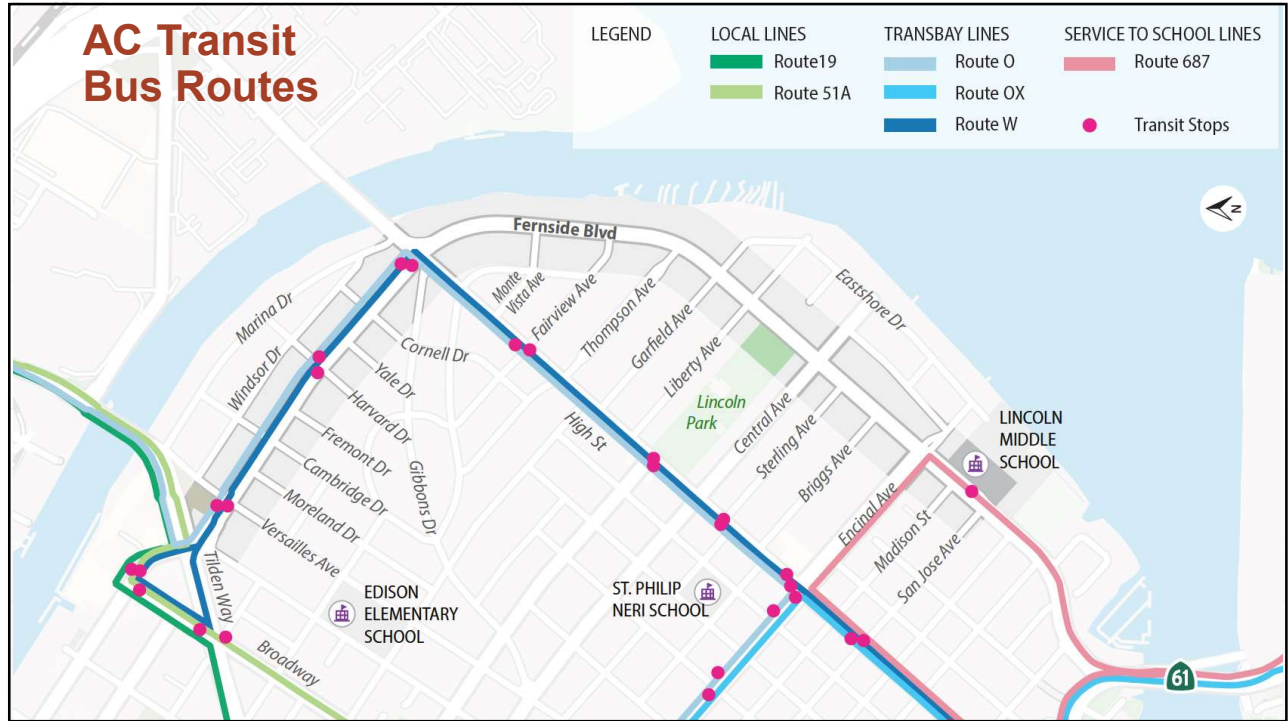
## Varied Segments







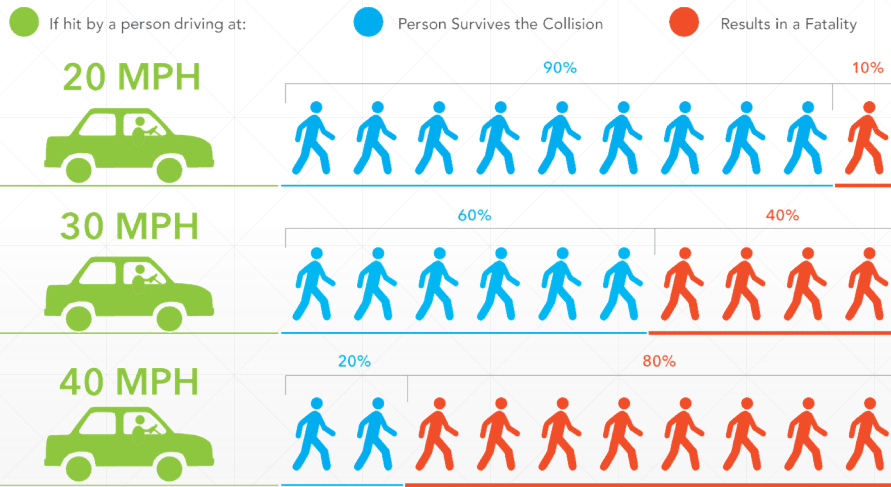






# Crash History

## Vehicle Speed and Crash Outcomes Involving Pedestrians



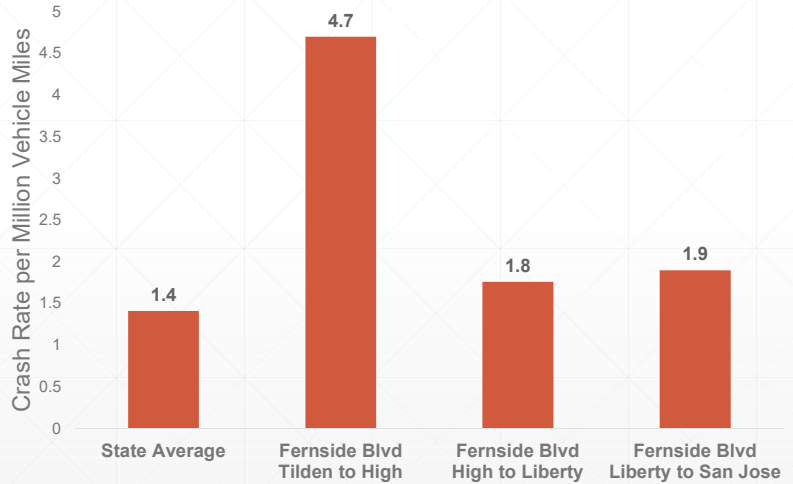
Vision Zero San Francisco Two Year Action Strategy 2015

## High Crash Rate throughout the Corridor

**64**

crashes from  
2017-2021

(including non-injury crashes)



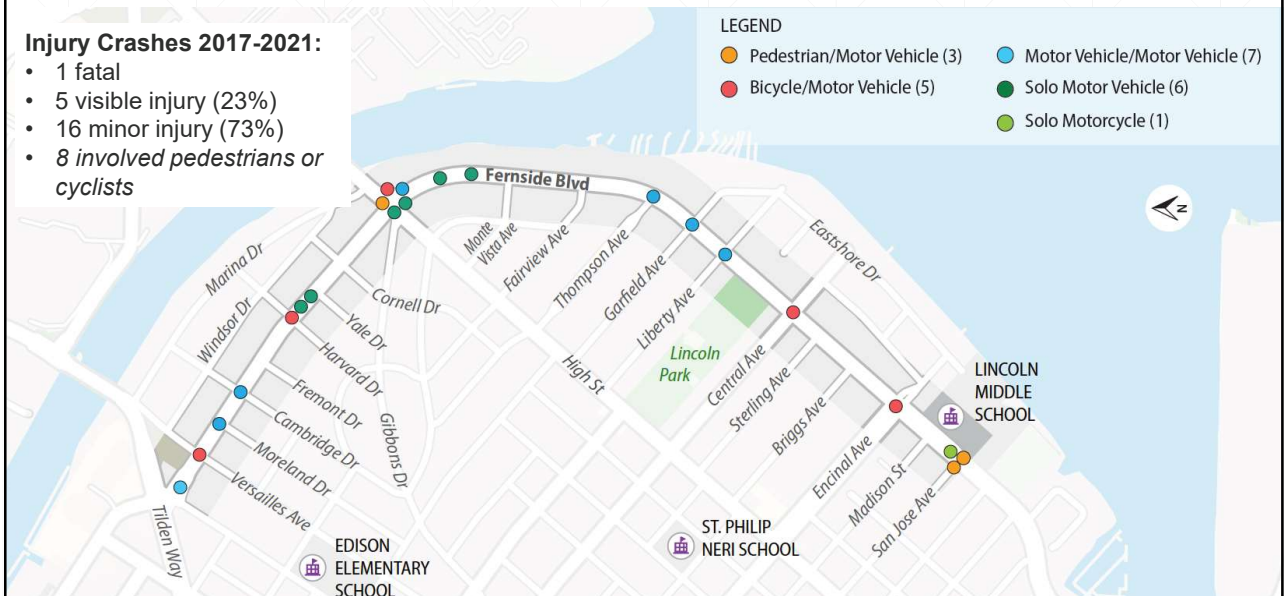
## 22 Injury Crashes from 2017-2021

### Injury Crashes 2017-2021:

- 1 fatal
- 5 visible injury (23%)
- 16 minor injury (73%)
- 8 involved pedestrians or cyclists

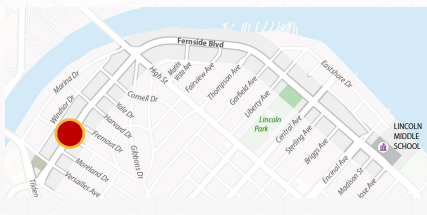
### LEGEND

- Pedestrian/Motor Vehicle (3)
- Bicycle/Motor Vehicle (5)
- Motor Vehicle/Motor Vehicle (7)
- Solo Motor Vehicle (6)
- Solo Motorcycle (1)



## Fatal Crash: September 6, 2021

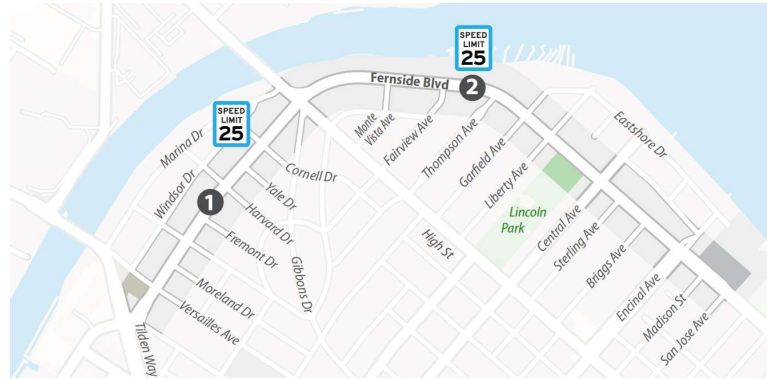
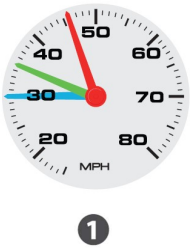
- Fernside & Cambridge intersection
- High-speed driver on Cambridge failed to stop at stop sign, causing broadside collision with another vehicle traveling on Fernside



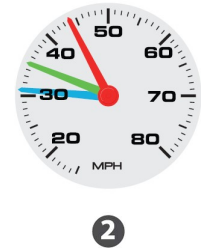
## Data Collection

## Existing Speed Limit is 25 mph, but Actual Vehicle Speeds are Higher

- Average Speed: 30 mph
- 85th Percentile Speed: 35 mph
- Highest speed recorded: 46 mph

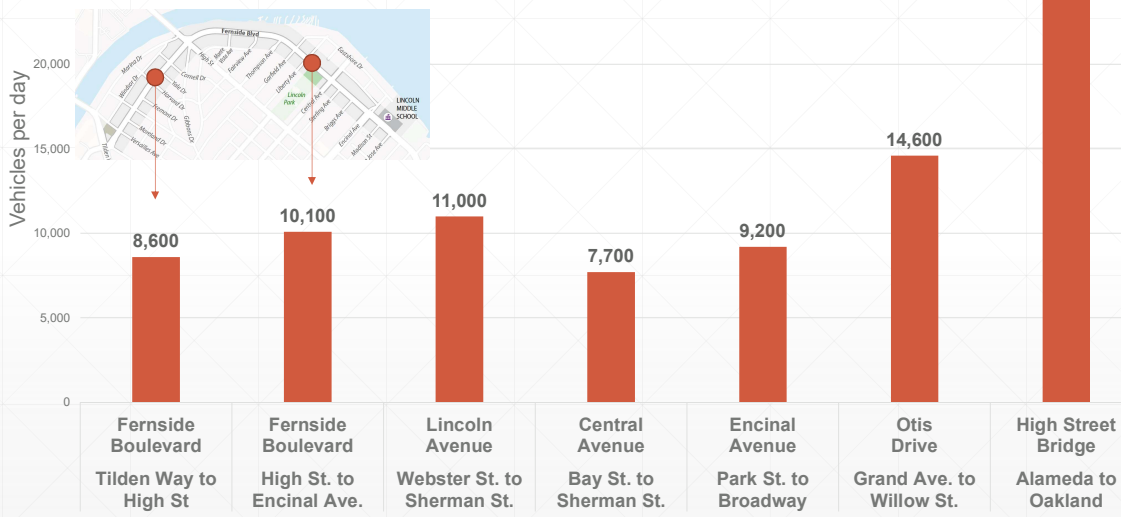


- Average Speed: 31 mph
- 85th Percentile Speed: 35 mph
- Highest speed recorded: 44 mph



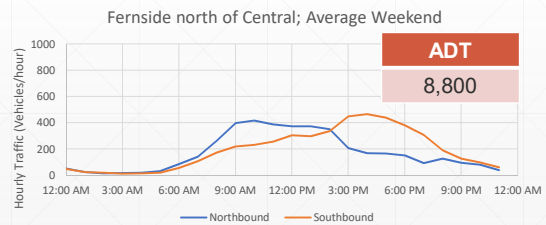
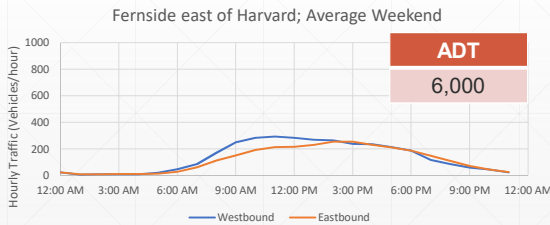
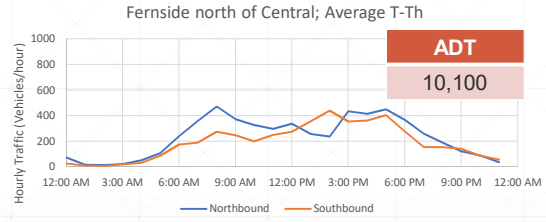
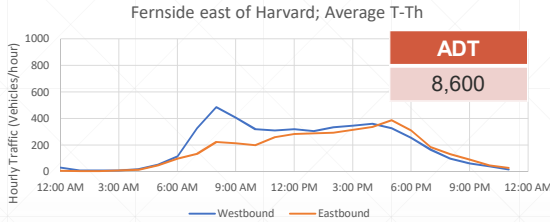
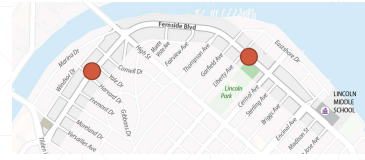
Speed survey conducted on 10/24/2023

## Average Daily Traffic Compares to Similar Roadways



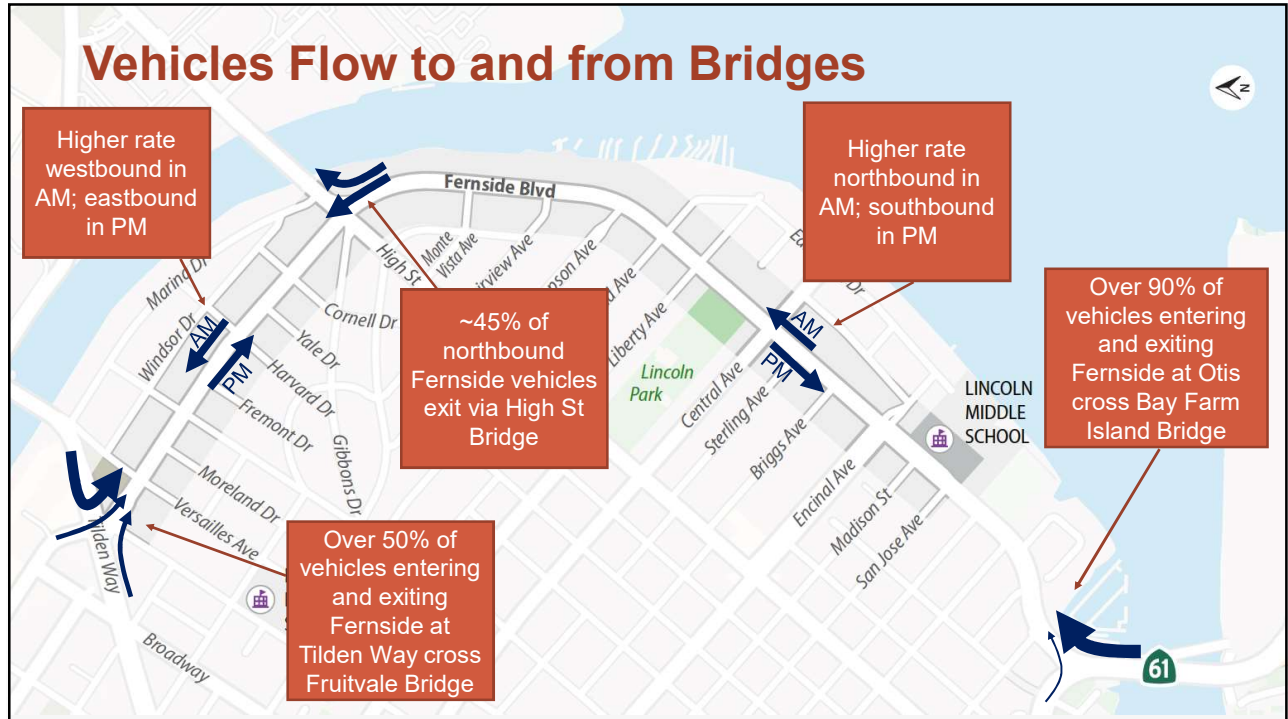
Traffic counts measured between 10/12/2023 and 10/18/2023

# Fernside Carries 200 to 500 Vehicles per Hour in Each Direction

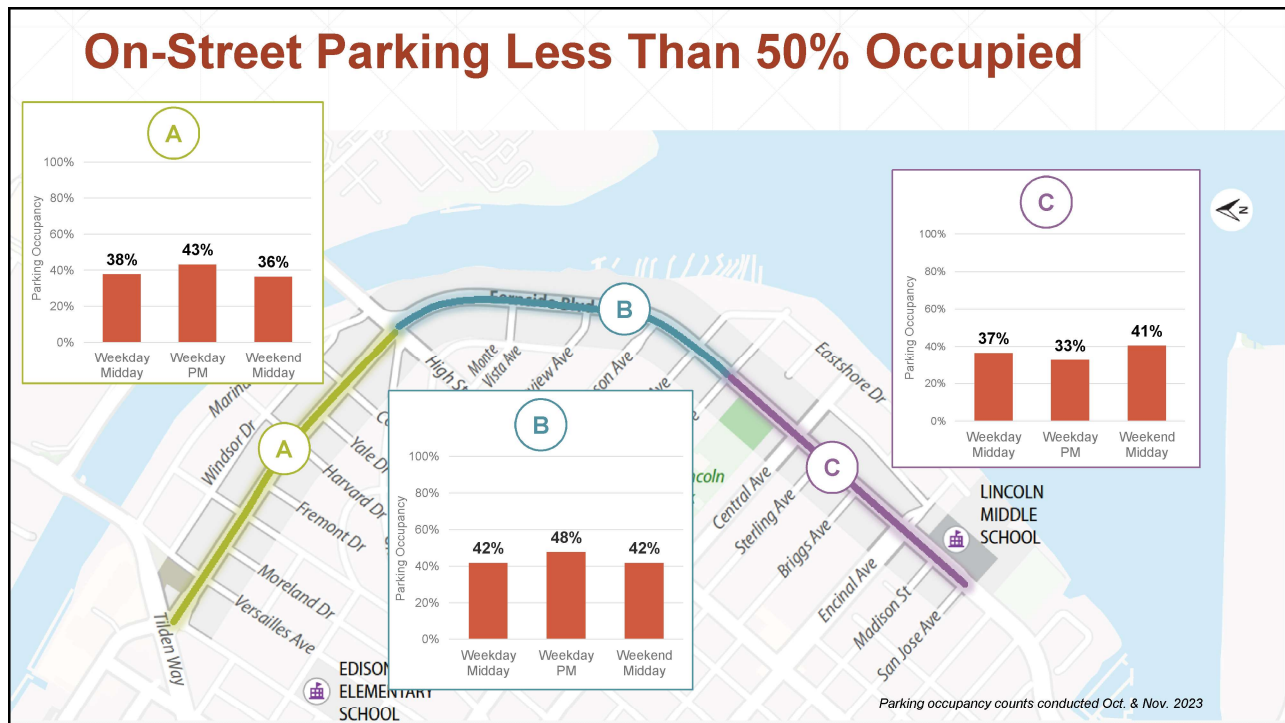
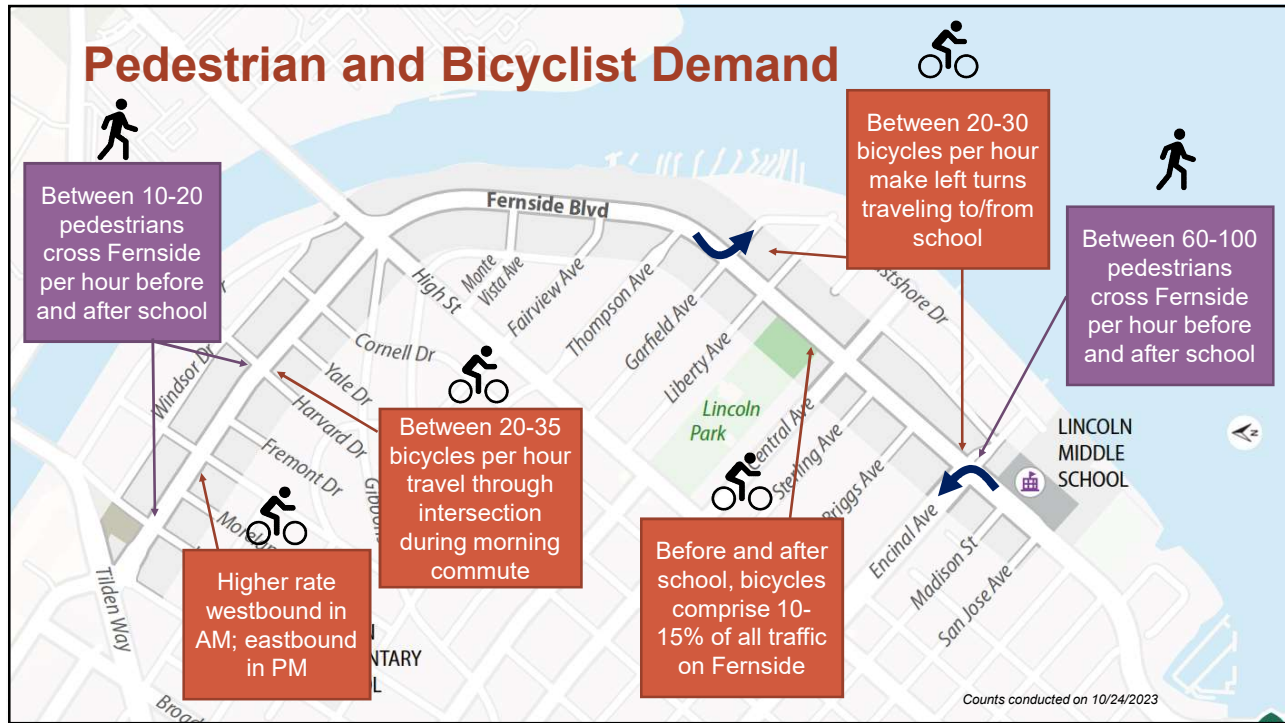


Traffic counts measured between 10/12/2023 and 10/18/2023

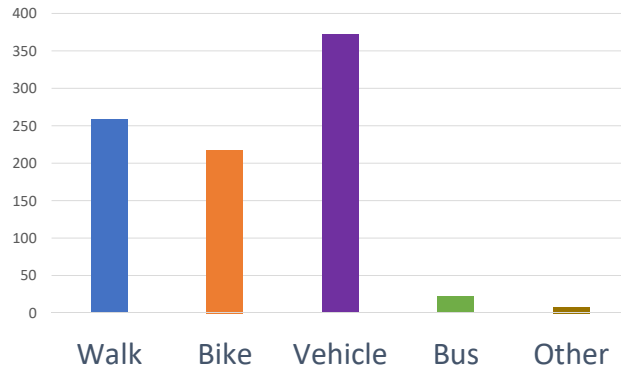
# Vehicles Flow to and from Bridges







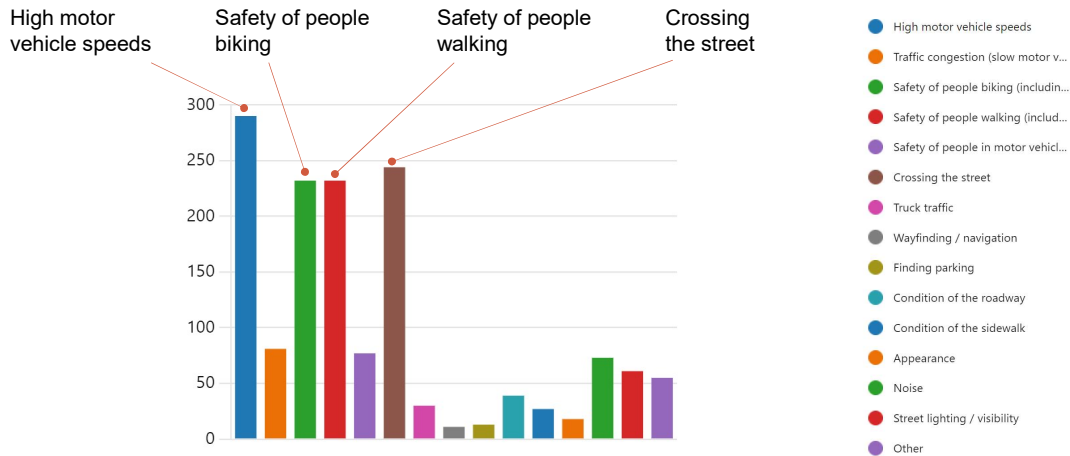
## Online Survey Results: 408 Responses as of Dec. 1



**What mode(s) of travel do you often use when traveling along or crossing Fernside Boulevard?**

Survey available at [alamedaca.gov/fernside](http://alamedaca.gov/fernside)  
 Survey results gathered between Nov. 17 and Dec. 1, 2023

## Online Survey Results



**What do you find most challenging when using Fernside Blvd?**

Survey available at [alamedaca.gov/fernside](http://alamedaca.gov/fernside)  
 Survey results gathered between Nov. 17 and Dec. 1, 2023

## Sample Survey Responses

“It’s difficult to get in or out of driveways”

“Cars are traveling way too fast”

“The street is poorly lit”

“The intersection at High and Fernside is dangerous”

“Its complicated to get to the two-way bike lane”

“Crossing Fernside on foot is risky”

“Protected bike lanes would be great”

“Cars pass in the median”

“The street is too wide”

“I would see more street trees”

“Cars often speed through crosswalks”

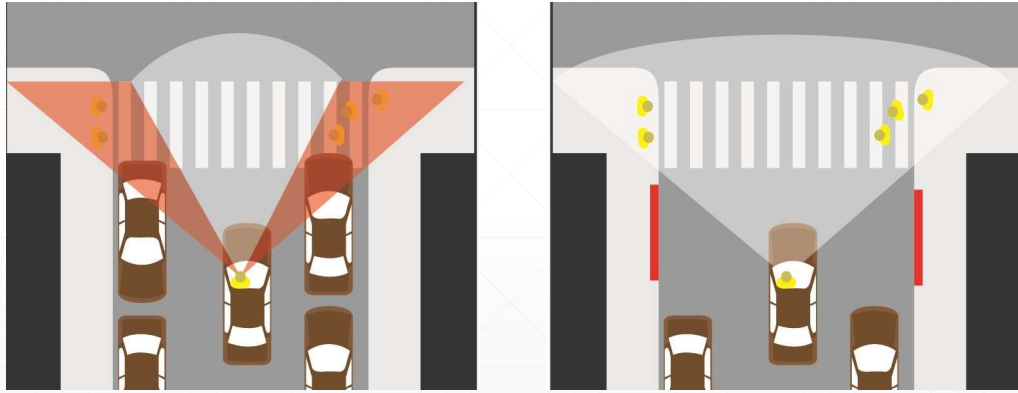
“I would love more crosswalks”

Survey available at [alamedaca.gov/fernside](http://alamedaca.gov/fernside)  
Survey results gathered between Nov. 17 and Dec. 1, 2023



## Improvement Toolkit – Traffic Calming & Safety

## Improved Sight Lines



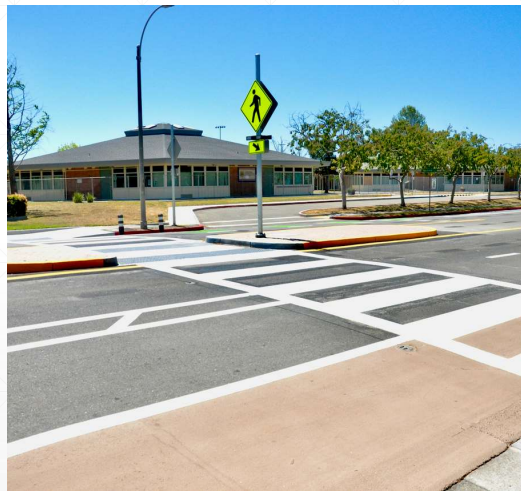
## High Visibility Crosswalks



## Rectangular Rapid Flashing Beacon



## Pedestrian Refuge Islands



## Bulbouts



## Speed Feedback Sign



## Bus stop enhancements



## Improvement Toolkit – Bikeways

---

## Buffered Bicycle Lanes



## Physically Separated Bike Lane: 1-Way





## Physically Separated Bike Lane: 2-Way



## Raised Bike Lane





## Next Steps

---

### Next Steps

- **Outreach round 1: existing conditions and initial input**
  - Dec. 4 Community workshop
  - Dec. 11 Virtual community workshop
  - December 17 Survey closes
  - January 28 Transportation Commission (tentative)
- **Outreach round 2: draft concept alternatives**
  - Spring 2024
  - Feedback to select design concepts
- **Final Concept & Approval**
- **Resurfacing & restriping west of High**
  - 2025 (tentative)

[alamedaca.gov/fernside](https://alamedaca.gov/fernside)

---



## Open House

---

### Your Input – Draw on the Maps!

#### Station 1&2 – existing conditions

- Where and how do you travel to and across Fernside?
- Where do you find safety challenges when using Fernside?

#### Station 3&4 – visioning

- What traffic calming and safety toolbox measures are needed?
  - What bikeway solutions would serve the community?
- 

