

Overview

Alameda Municipal Power (AMP) provides electricity to all the residents and businesses of Alameda. The Bureau of Electricity, which does business as “Alameda Municipal Power”, began operation in 1887 and was the first municipal electric utility in California. AMP is under the policy control of the Public Utilities Board (PUB), in accordance with the Alameda City Charter. The PUB consists of four members appointed by the City Council, and the City Manager.

AMP continues fundamental reorganization to meet the needs of its Strategic Plan and aligning staff resources to achieve its purpose. Each year, the PUB identifies key upcoming issues and sets priorities for the department. The electric utility industry is facing an era of unprecedented change. During FY17-18 AMP will continue to meet the technology and workforce transformation that is taking place in the utility industry. The short-term to mid-term focus will be on electric reliability compliance and the mid-term to long-term focus will be on developing and implementing advanced technology blueprints.

Alameda joined the Northern California Power Agency (NCPA) in 1968, is a participant in most NCPA projects, and has also procured other power supply resources independently. In addition, NCPA has developed electric dispatch and transmission capabilities that contribute to Alameda electric utility services. AMP electric resources have a high renewable-energy content which the utility has begun to monetize. AMP serves all of Alameda and has approximately 86.1 pole miles of overhead distribution lines, 176.4 circuit miles of underground distribution lines, 6.8 pole miles of overhead transmission lines, 1.9 circuit miles of underground transmission lines and 5,441 streetlights. It serves approximately 34,525 customers, comprised of approximately 30,307 residential customers and 3,834 commercial customers, and 384 other users, and had a peak demand of approximately 63.3 megawatts.

Workplan Highlights

- Customer Programs & Experience
- Workforce
- System Resiliency
- Technology
- Energy Resources
- Financial Stability

Goals / Performance Measurements

- Ensure that customers have a positive experience, ensuring that AMP consistently achieves a 90 percent or greater in customer satisfaction
- Implement programs that support a green Alameda
- Develop workforce skills for AMP opportunities
- Maintain low customer outage frequency and duration, ensuring AMP remains in top quartile for annual System Reliability Metrics.
- Assure ongoing improvements for Alameda Point Infrastructure.
- Achieve 100 percent Advanced Metering Infrastructure (AMI) deployment by 2018
- Reestablish an effective Underground Utility District Program (UUDP)
- Achieve a level of 85 percent carbon neutral by 2020
- Meet all bond covenants by annually ensuring 145 days of cash on hand and a bond ratio of 1.75.





City of Alameda Budget and Forecast

Alameda Municipal Power

Summary of Expenditures and Revenues

<u>Expenditure Category</u>	FY15-16 Actual	FY16-17 Budget	FY16-17 Projected	FY 17-18 Budget	FY18-19 Budget
Personnel Services	\$ 8,042,688	\$ 9,042,814	\$ 9,042,814	\$ 9,771,687	\$ 9,967,121
Contractual Services	7,113,295	8,017,045	\$ 8,017,045	8,746,851	8,921,788
Materials & Supplies	1,600,019	1,630,690	\$ 1,630,690	1,679,390	1,712,978
Purchased Power	29,781,270	30,192,758	\$ 30,192,758	31,202,000	32,762,100
Capital Outlay	3,383,605	7,517,782	\$ 7,517,782	9,927,180	5,570,000
Debt Service	2,599,586	2,681,393	\$ 2,681,393	2,619,713	3,172,107
PILOT / ROI / Transfer	4,189,500	4,217,257	\$ 4,217,257	5,145,575	5,248,487
Total	\$ 56,709,963	\$ 63,299,740	\$ 63,299,740	\$ 69,092,396	\$ 67,354,580

Revenue

	FY15-16 Actual	FY16-17 Budget	FY16-17 Projected	FY 17-18 Budget	FY18-19 Budget
Sales of Electricity	\$ 54,221,022	\$ 56,818,388	56,818,388	\$ 57,985,000	\$ 60,884,250
Retain: UUD Reserve Funding	(1,075,195)	\$ (1,136,000)	(1,136,000)	\$ (1,160,000)	\$ (1,217,700)
Retain: Balancing Account	(1,010,084)	TBD	TBD	TBD	TBD
C&T / REC Sales Net Income	6,363,950	5,982,759	5,982,759	3,187,292	3,251,038
Retain: C&T/REC Reserves	(6,363,950)	(5,982,759)	(5,982,759)	(3,187,292)	(3,251,038)
Other Operating Revenues	947,765	741,000	741,000	954,130	973,213
Interest Income	316,903	120,000	200,000	300,000	306,000
Other Income (Net)	220,617	308,886	308,886	317,091	323,433
Reserve Spending	2,814,841	6,395,000	2,795,000	8,328,000	3,494,560
Totals	\$ 56,435,869	\$ 63,247,274	\$ 59,727,274	\$ 66,724,221	\$ 64,763,755

Net Alameda Municipal Power (AMP)

	\$ (274,094)	\$ (52,466)	\$ (3,572,466)	\$ (2,368,175)	\$ (2,590,825)
--	---------------------	--------------------	-----------------------	-----------------------	-----------------------

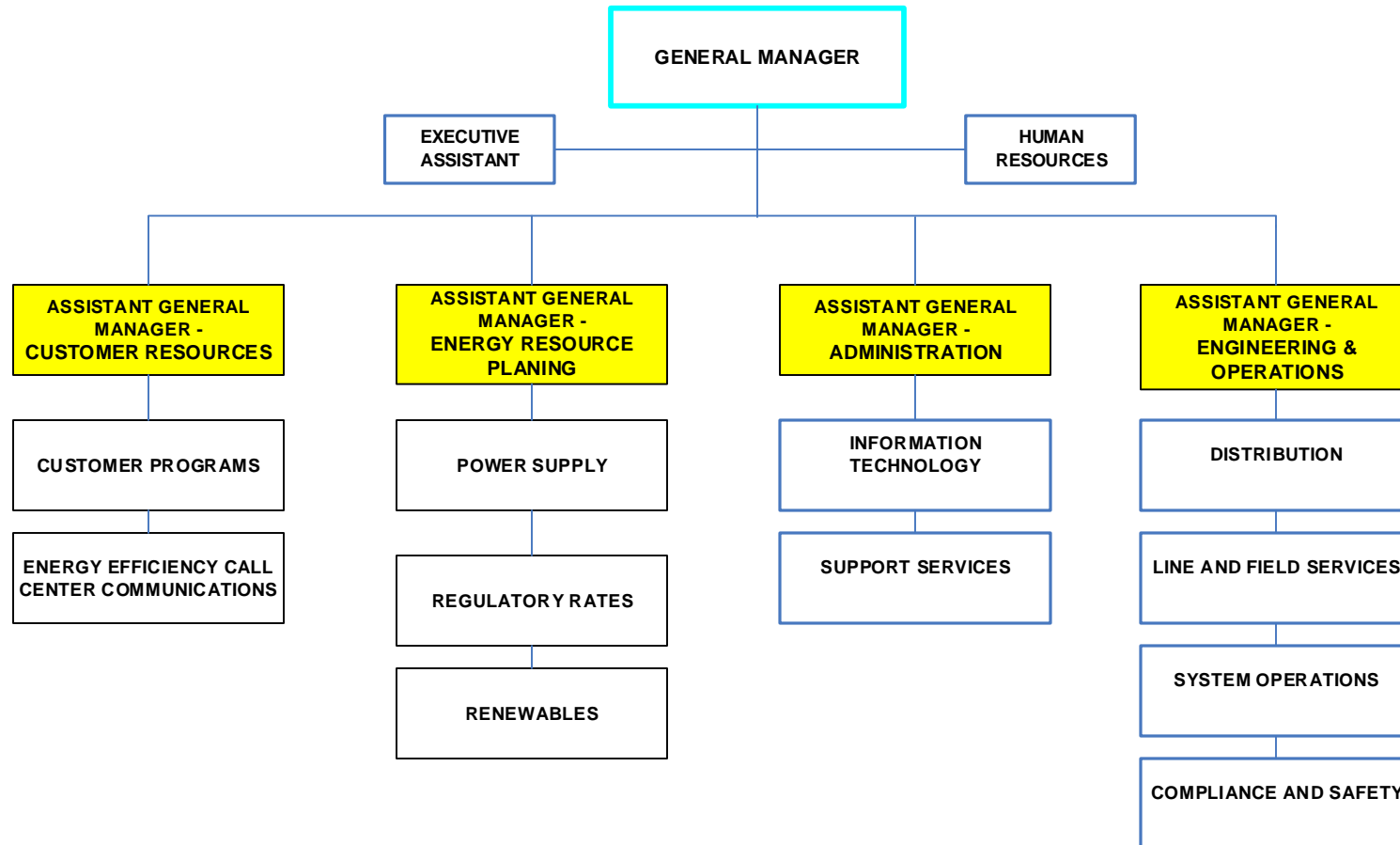
Designated / Undesignated Reserves

Designated Reserves	\$ 27,483,857	\$ 25,463,479	\$ 25,463,479	\$ 21,190,771	\$ 21,956,948
Undesignated Reserves	\$ 29,111,939	\$ 24,610,381	\$ 21,010,381	\$ 21,002,256	\$ 18,611,431

Authorized Positions

	98.5	93.5	88.00	97.25	97.25
--	-------------	-------------	--------------	--------------	--------------

Alameda Municipal Power FY 17-18 / 18-19





City of Alameda, California

People and Places in the City

