

# 2025 Annual Report



## Alameda Police Department



### Chief

Nishant Joshi

# A Year in Review

## Message from Chief Nishant Joshi

This has been an exciting year for the Alameda Police Department as we continued to expand our capabilities to serve the community and experienced our second consecutive year of significant crime reduction. Reported crime in 2025 was down approximately 15% compared to 2024 and down 24% compared to 2023. In addition to crime reduction, APD has prioritized traffic safety leading to a 91% increase in traffic stops for unsafe driving behavior.

In 2025, APD also began the process to receive accreditation by the Commission on Accreditation for Law Enforcement Agencies, Inc. (CALEA) marking our commitment to professional standards, continuous improvement, and excellence in public safety.

Looking forward to 2026, APD aims to build on these accomplishments by continuing to bring on outstanding officer candidates and lateral officers with years of experience and building our officers' capabilities and knowledge. This year we plan to expand our Traffic Unit to include additional officers for dedicated traffic enforcement and road safety. In addition, APD will expand its Investigative Unit to expand our capacity to solve more complicated cases and its Special Weapons and Tactics (SWAT) Team to respond in complex emergencies. Our Business District Officer Program will continue to provide dedicated officers to the most significant driver of crime involving larceny and theft in the business community. Through these and other advancements, APD will continue its commitment to ensure Alameda is one of the safest communities in the Bay Area.



Sincerely,

Nishant Joshi  
Chief of Police

# Table of Contents

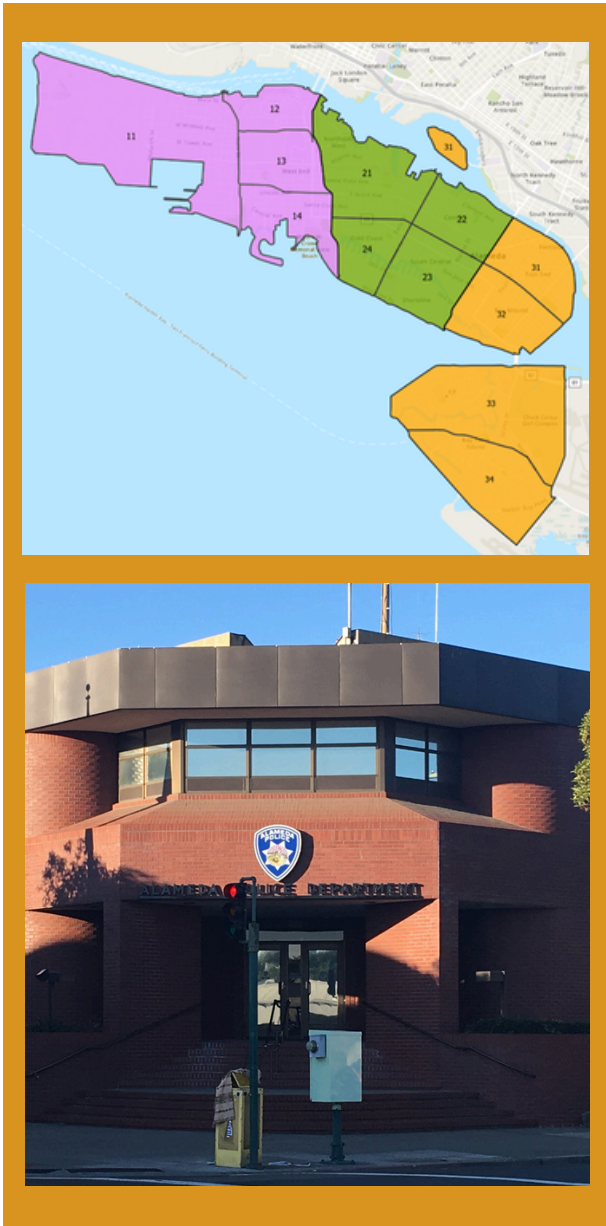
- About Alameda Police Department ..... 4
  - About APD..... 5
  - APD Command..... 6
  - Organizational Chart..... 7
  - 2025 APD Goals..... 8
  - Department Staffing ..... 9
  - Ongoing Training ..... 11
  - Department Budget ..... 12
- Crime In Alameda 2025 ..... 13
  - Incidents ..... 14
  - Cases ..... 15
  - Drivers of Crime..... 17
  - Other Crime Trends ..... 19
  - Investigations ..... 21
  - Arrests and Clearance ..... 22
  - Traffic Enforcement ..... 23
- 2025 Highlights ..... 24
  - CALEA Enrollment ..... 25
  - Expanding the Team ..... 26
  - Community Outreach ..... 27
  - Looking to 2026 ..... 28
  - Contact Us..... 29



# About Alameda Police Department

# About APD

Incorporated in 1854, the City of Alameda is located in the San Francisco Bay and is comprised of the main island of Alameda, Bay Farm Island, and Coast Guard Island spanning a land area of approximately 10.5 square miles. Alameda is home to almost 80,000 residents, regional shopping centers and main street business districts, and several large business parks. In addition, Alameda has 17 public schools and approximately 400 acres of parks and recreational facilities, including a large shoreline on the Bay.



To ensure adequate police resources are available throughout the City, APD divides oversight into three geographic sectors each comprised of four beats. A Lieutenant oversees each sector and is responsible for identifying and developing strategies to address sustained crime problems, should they arise. An additional Business Sector Lieutenant is responsible for developing solutions to crime patterns that are identified in business areas throughout the City. The Sector/Beat geographic organizational style facilitates community policing, allowing officers to develop a strong understanding and appreciation of their areas of responsibility and the community they serve.

The community in Alameda has been proudly served by Alameda Police Department (APD) since 1874. The department is currently helmed by Chief Nishant Joshi and, as of December 2025, has 67 sworn officers and 33 support services staff.

# APD Command

## Office of the Chief of Police - Chief Nishant Joshi

The Office of the Chief of Police is responsible for oversight of the department as a whole. This office interfaces with City leaders and provides direction and vision for APD including the focus on data-driven, community-oriented policing.

## Bureau of Field Services - Captain Alan Kuboyama

The Bureau of Field Services is responsible for delivering front-line patrol and crime prevention services. This bureau oversees all patrol officers responsible for the day-to-day response to crime and safety in Alameda.

## Bureau of Support Services - Captain Matthew McMullen

The Bureau of Support Services oversees vital operations that support the overall function of the department including communications and dispatch, investigations, and traffic enforcement. This division is also responsible for police facilities and equipment.

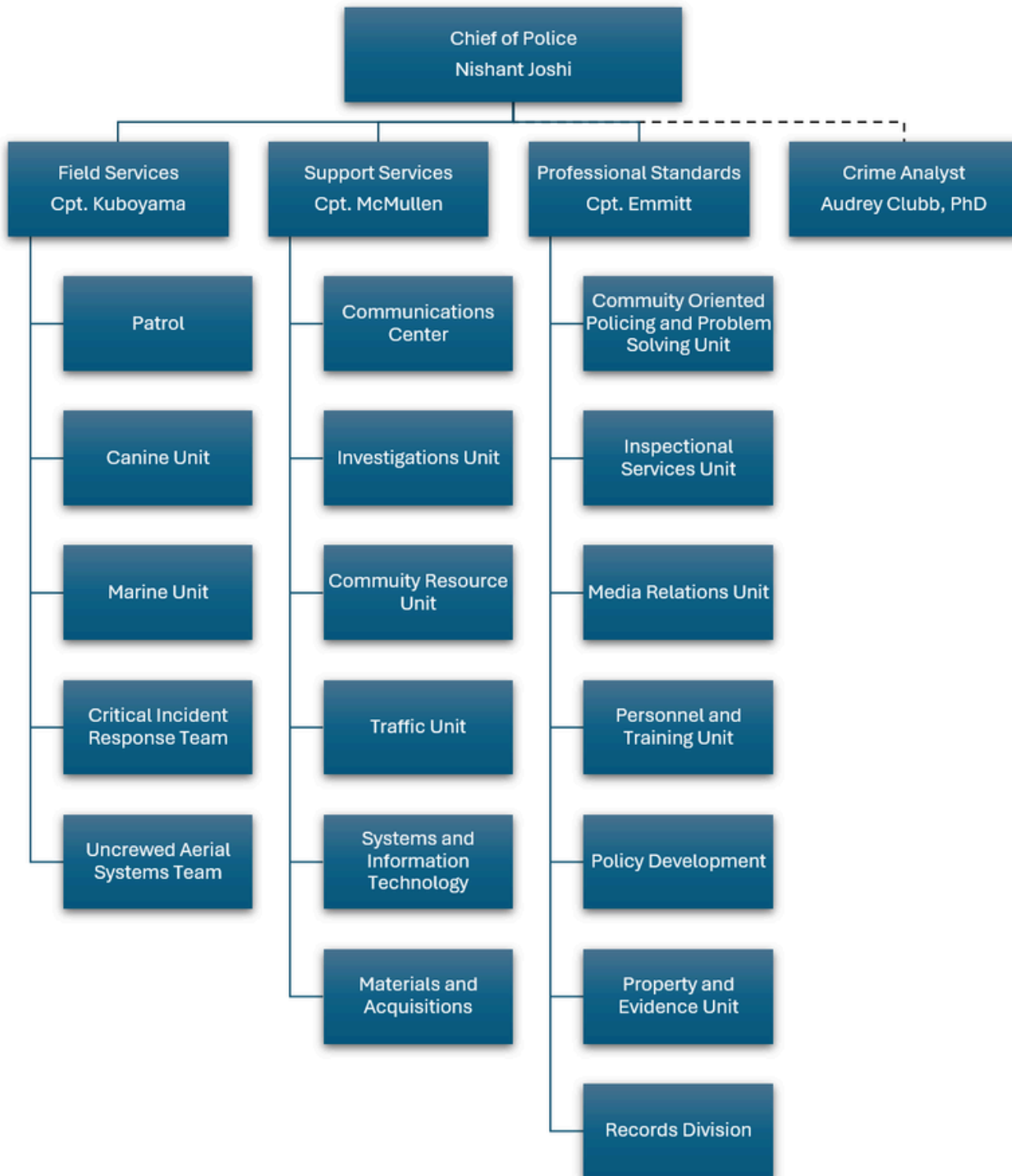
## Bureau of Professional Standards - Captain Jeffery Emmitt

The Bureau of Professional Standards is responsible for ensuring that staff and officers are equipped with the necessary tools, equipment, and training to provide the highest level of service to the community.

## APD Statement of Values

- *We are honest, open and fair in our dealings with ALL people.*
- *Our continuing commitment is to provide quality service to the community with respect, concern, caring, and equal treatment of all people.*
- *We value our fellow employees, recognizing that the human resource is our greatest asset.*
- *We are committed to maintaining an environment that promotes and encourages a tradition of professionalism.*

# Organizational Chart



# 2025 APD Goals

The goal of the Alameda Police Department is always to ensure that Alameda continues to be a safe and welcoming place for residents, businesses, and visitors alike. In 2025, APD selected several key goals to continue improving the department and to better serve the community. APD is proud to have made great progress towards these goals.

## Improve Customer Service Ratings to 4.75 out of 5.0



In March 2025, APD adopted a new platform, Power Engage, to better measure satisfaction with services provided. Under the new system, approximately 84% of those contacted by APD reported a positive experience. Command Staff reach out to all those reporting a non-positive experience to learn and improve service delivery.

## Fully Staff APD with the Allotted Number of Sworn Personnel



APD successfully reached full Patrol staffing in February 2025. Patrol has remained at or very close to that staffing goal throughout 2025 and continues to offer one of the Nation's most impressive hiring incentives to attract top-notch officers to serve the City of Alameda.

## Engage in a Coordinated Effort to Address Theft Offenses



In July 2025, APD established the Business District Officer Program which dedicated four officers to key retail and commercial areas of the City. Since that time, case clearance for crimes in the Business District increased from 25% to 43% and there were 85 arrests for individuals with two or more petty theft priors.

## Improve Traffic Enforcement



APD Command Staff issued a directive to Patrol staff to significantly increase traffic enforcement efforts by assigning officers to traffic operations and encouraging officers to utilize time between calls for traffic enforcement. Traffic stops in 2025 were nearly double (+91%) that of the prior year.

# Department Staffing

As of December 2025, APD employed 67 sworn officers and 33 professional staff including 10 new sworn officers added in 2025. Sworn officers included leadership, patrol officers, and specialized units such as Investigations, Traffic, and the Community Resource Unit. Professional staff included crime scene specialists, crime analysts, animal control officers, dispatchers, records specialists, and others that support the department's mission.

APD is authorized to employ 88 sworn officers, and continues its efforts to fully staff all sworn positions with the strongest possible candidates. In March 2023, APD implemented a \$75,000 hiring incentive to encourage potential applicants and to help offset the comparatively high cost of living in the Bay Area. APD has hired 35 officers under this program since that time.

The timeline for bringing a new officer through the extensive background investigation and interview process, completion of the Police Academy, and Field Training program can take a year or more to complete. In February 2025, APD achieved its goal of fully staffing its Patrol Unit and has retained close to that number throughout 2025. APD continues to seek the highest qualified candidates to serve the community.

The Alameda Police Department is a team of dedicated men and women committed to providing:

- *Professional, proactive, and personable police services;*
- *Collaborative problem-solving with other governmental and community organizations;*
- *An open relationship with citizens focused on improving their quality of life.*

## An Inspired Officer

As a child growing up in Alameda, Officer Wint experienced firsthand the impact of police services when his family's home was burglarized. The officers who responded to their call left a lasting impression.

Inspired by that experience and motivated to give back to the community that once served him, Officer Wint was sworn in as an Alameda Police Officer in the summer of 2025.

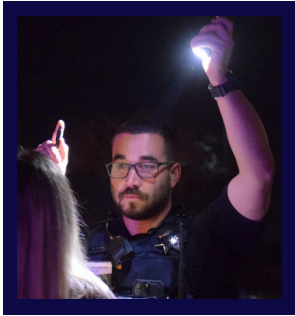


# Department Staffing

The table below shows actual and authorized full-time APD staff as of December 31, 2025. APD is almost fully staffed for non-sworn positions and continues to seek highly-qualified officers for its officer positions. Additional information on how to become and APD officer can be found on our website.

Full Time Staff APD Staff		
Rank/Position	Actual	Authorized
Chief	1	1
Captain	3	3
Lieutenant	8	8
Sergeant	12	12
Officer	43	64
Police Records & Communications Manager	2	2
Senior Dispatcher	2	2
Dispatcher	11	12
Property & Evidence Technician	1	1
Crime Scene Specialist	2	2
Executive Assistant	1	1
Administrative Management Analyst	1	1
Office Assistant	1	1
Records Specialist	4	4
Intermediate Clerk	1	1
Admin Technician II	0	1
Maintenance Technician	1	1
Telephone Operator	1	1
Abandoned Vehicle Technician	1	1
Animal Control Officer	2	2
Technical Services Coordinator	1	1
Crime Prevention Technician	1	1
Crime Analyst	0	1

# Ongoing Training



Officers Completing Police Academy: 7  
Officers Completing Field Training Program: 9

Prior to becoming a patrol officer, all new officers must complete a rigorous police academy training program consisting of approximately 1,064 hours of instruction over a 28-week period. Following this, officers then participate in a Field Training Officer Program in Alameda in which they are partnered with a seasoned officer for a minimum of 19 weeks. Experienced officers transferring in from another department are exempt from attending another academy training but still complete some amount of time in the Field Training Officer Program to learn about the department and the City they will serve.

The California Commission on Peace Officer Standards and Training (CA POST) requires all peace officers to receive continued professional training to maintain certifications and proficiency. CA POST requires a minimum of 24 hours of continued professional training and 10 hours of perishable skills training every 24 months, which APD greatly exceeds. Training is also required to meet legislative requirements. According to the 2025 Police Auditor Annual Report officers received 7,604 hours of training in 2025.

Some training topics in 2025 included:

- Drone Operations
- DUI Investigations
- Ramey Warrants
- Range Practice
- Investigations
- Use of OC Spray
- Crisis Intervention
- Canine Deployment
- Use of Radar
- Traffic Collision Investigation
- Defensive Tactics



In addition, Sergeants provide training on timely topics at the start of each shift to debrief significant cases, review best practices, and rapidly respond to updates in law and policy.

# Department Budget

The APD budget operates on a fiscal year calendar from July through June and is approved by City Council each year. The following summarizes the department’s budget for the last three fiscal years.

<b>Police Operating Budget</b>	
FY23-24 Actual	\$46,036,025
FY24-25 Actual	\$45,600,133
FY25-26 Estimated	\$50,746,527

<b>Police Personnel Services Costs</b>	
FY23-24 Actual	\$32,358,259
FY24-25 Actual	\$33,276,541
FY25-26 Estimated	\$39,333,404

<b>Generated Revenue</b>	
FY23-24 Actual	\$898,912
FY24-25 Actual	\$1,024,831
FY25-26 Estimated	\$642,300

Generated revenue is derived from administrative fees (e.g., towing, false alarms, ordinance violations, records reports, fingerprinting), Prop 171 sales tax, Alameda Housing Contribution, and officer training/licensing reimbursements.

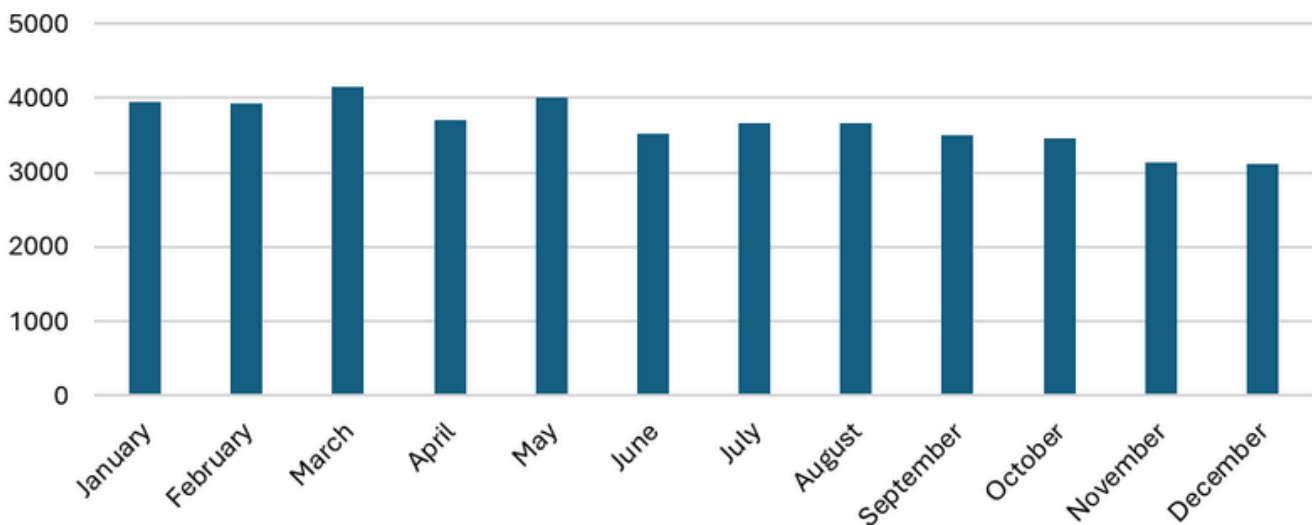


# Crime in Alameda 2025

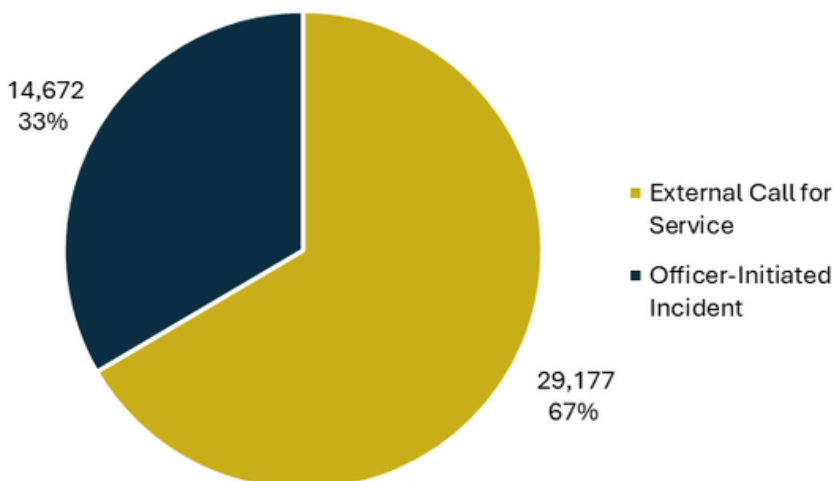
# Incidents

Incidents are documented each time the APD Communications Center receive a 911 and non-emergency call or notification of an alarm. Incidents are also documented each time an officer engages in a proactive policing activity such as a directed patrol or traffic stop. In 2025, Alameda recorded 68,328 calls for service. Of those, 9045 were emergency calls for services from the Alameda Fire Department (AFD) which may or may not have also involved support from APD. APD officers responded to a total of 43,849. The APD Communications Center also received 24,479 calls for service that did not require an officer to be dispatched (e.g., misdial, information only, fire/emergency only).

2025 Incidents with Officer Response



Incident Source



Of the incidents responded to by officers in 2025, 29,177 (67%) were received as calls for service directly to the Communications Center and 14,672 (33%) were initiated by officers. While the number of external calls for service remained about the same as the prior year, officer-initiated incidents increased by 43% driven largely by a significant increase in traffic stops.

# Cases

## A Note on Crime Statistics

In 2021, the United States Department of Justice (DOJ) implemented the National Incident Based Reporting System (NIBRS) to replace the previously used Uniform Crime Report (UCR). A full description of the NIBRS reporting system can be found at the Federal Bureau of Investigation’s website ([www.FBI.gov](http://www.FBI.gov)). APD transitioned to the new reporting system consistent with federal guidelines, but continued UCR formatting in internal and external reporting to minimize the impact of the change on public understanding of crime statistics and patterns. Beginning in 2024, APD transitioned to the NIBRS crime typology framework. However, while the DOJ utilizes an incident-based reporting system that allows for duplication of cases, APD utilizes a case-based reporting system for both internal and external review of data. This case-based approach provides a much clearer picture of the instances of crime occurring in Alameda and changes in trends over time.

15%

Compared to 2024

24%

Compared to 2023



In 2025, APD received 4,980 cases reported to have occurred in that year, a 15% decrease compared to the 2024 and a 24% decrease compared to 2023. A full breakdown of cases by offense type is provided on the next page.

# Cases

Reportable Cases					
Offense Type	2025	2024	% Diff	2023	% Diff
Animal Cruelty	4	12	-67%	7	-43%
Arson	10	29	-66%	20	-50%
Assault	726	648	+12%	593	+22%
Burglary	172	195	-12%	306	-44%
Counterfeiting/Forgery	31	27	+15%	17	+82%
Vandalism	418	490	-15%	657	-36%
Drugs/Narcotics	351	240	+46%	176	+99%
Embezzlement	5	10	-50%	14	-64%
Extortion/Blackmail	11	10	+10%	15	-27%
Fraud	247	258	-4%	414	-40%
Gambling	1	0	-	0	-
Homicide	0	2	-100%	1	-100%
Human Trafficking	1	0	-	%	-50%
Kidnapping/Abduction	35	27	+30%	20	+75%
Larceny/Theft	2171	2577	-16%	2692	-19%
Motor Vehicle Theft	532	978	-46%	1294	-59%
Pornography/Obscene Material	4	6	-33%	5	-20%
Prostitution	1	0	-	1	0%
Robbery	94	95	-1%	126	-25%
Sex Offenses, Forcible	37	30	+23%	33	+12%
Sex Offenses, Nonforcible	0	0	0%	3	-100%
Stolen Property	96	117	-18%	126	-24%
Weapon Law Violations	80	91	-12%	87	-8%
All Other Offenses	737	615	+20%	465	+58%
Curfew/Loitering	10	1	+900%	3	+233%
Disorderly Conduct	142	107	+33%	116	+22%
DUI	98	98	0%	73	+34%
Family Offenses, Nonviolent	16	28	-43%	9	+167%
Liquor Law Violations	2	2	0%	0	-
Trespass of Real Property	101	68	+49%	78	+29%
<b>Total<sup>1</sup></b>	<b>4980</b>	<b>5840</b>	<b>-15%</b>	<b>6539</b>	<b>-24%</b>

[1] Note that cases may include multiple offenses and offense types. As such, the total here is the total number of reportable cases that included one or more of the offenses above.

# Drivers of Crime

While some crime types show significant shifts in percentage from year to year, the overall number of cases remains relatively small compared to other crime types. APD responds to and investigates each of these cases and continues to watch for trends and patterns that may contribute to these changes. However, crime in 2025 was largely driven by three offense types: Larceny/Theft Offenses, Assault Offenses, and Motor Vehicle Theft.

## Larceny/Theft Offenses

Larceny/theft involves the taking of another individual's or entity's property without the use of force and was present in approximately 44% of reported cases. This was by far the most significant driver of crime in Alameda. Approximately 26% of reported larceny/theft cases targeted businesses, generally involving shoplifting or other theft from buildings, and remained about the same in number to the prior year. The remaining 74% targeted individual property and declined by 19% compared to 2024. While larceny/theft offenses were the most frequently reported offense type, reportable cases fell 16% compared to the prior year amounting to a decrease of 406 total cases.

## Stopping Cyber Crime

In March of 2025, APD officers and investigators helped to foil a particularly bold and sophisticated cybercriminal taking advantage of an Alameda resident. The suspect provided a plausible story and even requested payment in gold and cash instead of digital transfer. In a coordinated operation with the victim, APD apprehended the suspect. The individual is now facing charges locally and may be subject to a wider federal investigation.



# Drivers of Crime

## Assault Offenses

Assault offenses can involve either individuals known to the suspect, including spouses or other intimate partners, or individuals not known to the suspect. There were 726 reported assault offenses in 2025, up 12% from 2024. Approximately 65% of assault cases are cleared by arrest or referral to the District Attorney. APD continues to work to solve assault cases and work with victims to get the support they need.

## Motor Vehicle Theft

Motor vehicle theft is the unlawful taking of another individual's or entity's vehicle without their consent. While motor vehicle thefts remain one of the most frequently reported crime types in Alameda, they declined significantly compared to prior years. Motor vehicle thefts in 2025 were down 46% compared to 2024 and 59% compared to 2023. In addition to intelligence-led proactive patrols, APD engaged in efforts to help drivers secure their vehicles against theft and worked with business owners to encourage the use of cameras, gates, and other environmental protective practices.

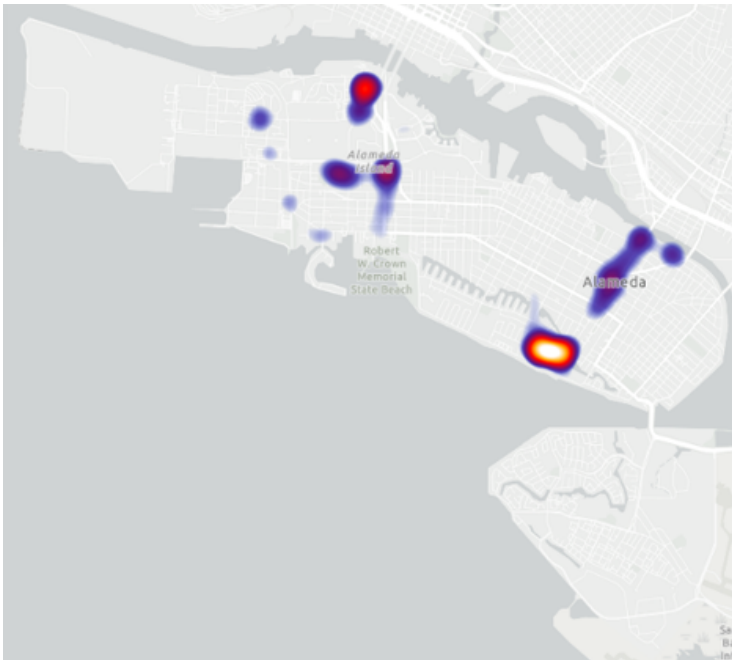
## Partnering with the Community

In early 2025, the Alameda Police Department observed an uptick in vehicle theft-related offenses. In response, APD's Crime Prevention Unit launched a two-week awareness campaign focused on encouraging consistent and mindful vehicle and bike security. Throughout the campaign, officers engaged with the community by distributing a variety of anti-theft safety devices and sharing practical tips to help residents reduce the risk of vehicle and bike theft.



# Other Crime Trends

APD does not apply a blanket enforcement approach. Rather, APD maintains fidelity to its data-driven and intelligence strategies to utilize its Patrol resources in areas most affected by crime. Alameda regularly reviews crime maps to identify “hot spots” where crime is concentrated. While these hot spots tend to concentrate around retail areas, APD adapts its patrol strategy to respond to areas of the City with emergent crime trends. The image below shows a concentrated heat map for 2025.



APD utilizes this data to implement directed patrols and foot patrols to deter crime and provide rapid response to reported crime. The concentration of cases around major retail areas including South Shore Center, Webster Street, and Alameda Landing is consistent with larceny/theft as the primary driver of crime in Alameda.

## The Business Sector

In response to the high level of reported larceny/theft cases, consistent hot spots at major retail areas, and to better serve the unique challenges of retailers, APD developed the Business Sector to be responsible for major business and retail areas throughout the City.

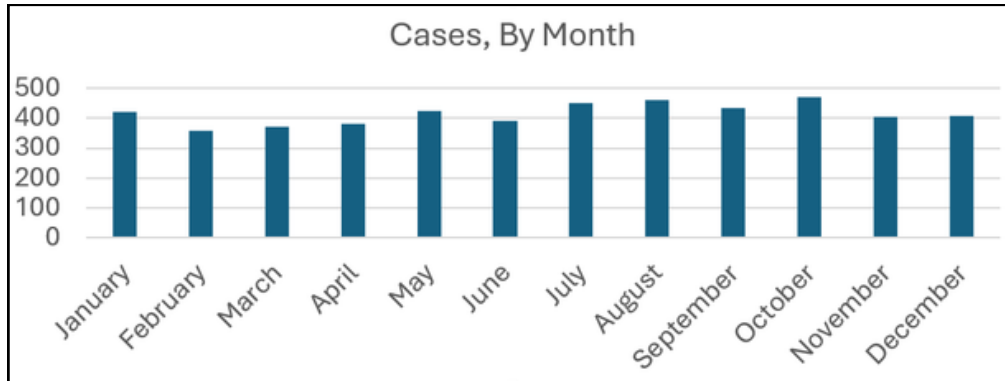
The assigned Lieutenant reviews and develops strategies to crime trends, coordinates with business owners, provides guidance for Crime Prevention Through Environmental Design (CPTED), and supports

investigations into cases that target businesses. In July 2025, APD implemented the Business District Officer Program to provide dedicated officers to these hot spot areas.

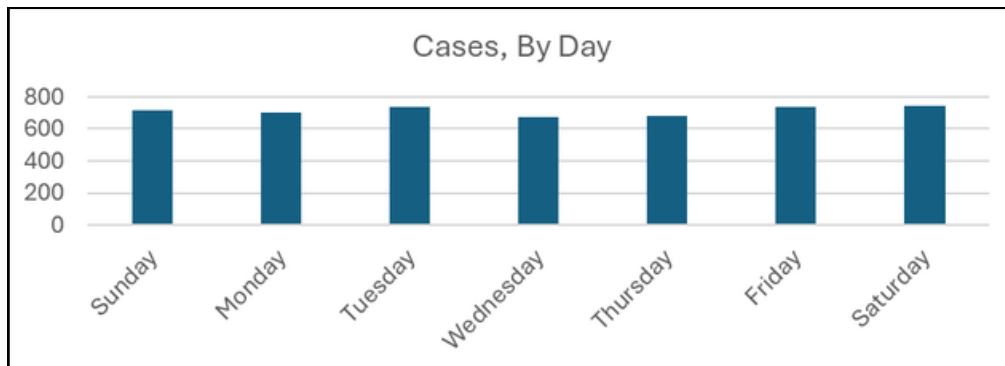


# Other Crime Trends

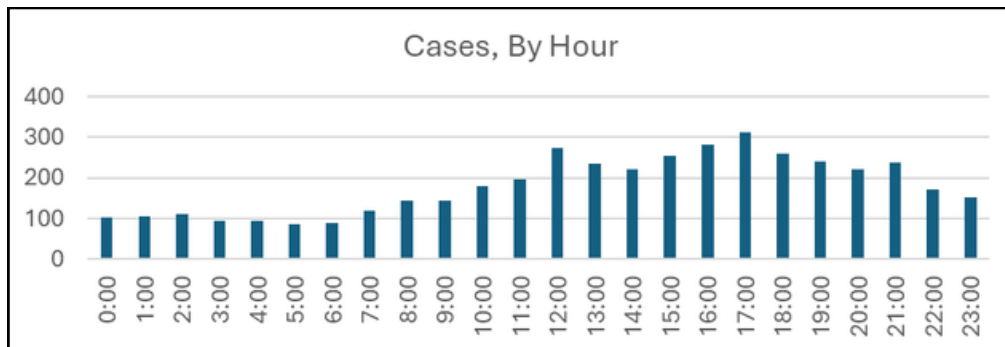
APD also reviews temporal patterns that analyze crime over time including month, day of week, and hourly to identify potential trends. APD utilizes the temporal trends to allocate resources to ensure sufficient officers are available during peak days and times.



Over the course of 2025, number of cases fluctuated month to month with a slight peak in the summer months.



While cases were slightly higher on weekends compared to weekdays, the day of week was not a strong predictor of crime in 2025.



Cases showed an increasing trend during the morning peaking around 5 pm. Reported cases then declined through the evening before reaching a low point between midnight and 7 am.

# Investigations

The Investigations Unit is comprised of three detectives that are responsible for investigating cases where there may be indication of connection between cases or suspects or where specialized technical expertise is needed. The Investigations Unit also operates with the support of the Community Resource Unit, which can provide additional connection with members of the community to solve complex cases. In 2025, 429 cases were referred to the Investigations Unit of which 108 were closed with a case disposition (e.g., suspect arrested or referred to the DA, no crime determined to have occurred, no prosecution desired). The remaining cases continue to be under investigation or have been suspended pending the identification of new leads.

APD detectives are highly trained and uses the latest technology such as cell phone tracing and social media analysis to identify and locate suspects.

## 2025 Attempted Murder Investigation

In September 2025, APD received a call for service indicating that an individual had been shot and that the suspect had fled. Officers immediately responded and began their investigation after ensuring the safety of the scene. The victim sustained non life threatening injuries.

Officers conducted interviews with witnesses and located critical evidence including a bullet casing, positive license plate reader confirmation, video recordings, cell phone data, and DNA analysis. Utilizing this forensic evidence, APD identified the suspect and an accomplice. These individuals were subsequently arrested and the case was referred to the DA. This case involved outstanding work by APD's Patrol Division, Crime Scene Investigators, and Investigations Unit.



# Arrests and Clearance

During 2025, APD officers conducted arrests for 1,496 cases, including cases for individuals with local and outside warrants. This resulted in a 43% increase from the 856 arrests completed in 2024.

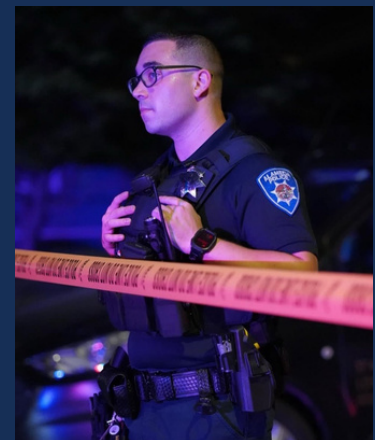
Top 5 Primary Arrest Offenses	
484(A) PC (Petty Theft)	
11364(A) HS (Possession of Drug Paraphernalia)	
666.1(A)(1) PC (Petty Theft with 2 or More Priors)	
23152(A) VC (Driving Under the Influence of Alcohol)	
273.5(A) PC (Domestic Violence)	

Case Status 2025	
Cleared by Arrest or Referral to DA	33%
Closed (Cleared by Exception, Unfounded, or Information Only)	4%
Open/Suspended	63%

Of the 4,980 cases reported in 2025, approximately 33% were cleared by arrest or referral to the DA, the latter suggesting the suspect had been identified and their name referred to the DA for prosecution. An additional 4% of cases are considered cleared because there was no crime determined to have occurred or because the victim did not want to pursue charges. The remaining 63% remain open and under investigation or have been suspended and will be reopened if and when new information or evidence becomes available.

## Clearance Rates

While crime prevention is a primary goal of policing, solving criminal cases when they do occur is another priority. Solving, or clearing, larceny and theft cases is particularly challenging as the offender is often unnoticed or leaves prior to police response. The use of intelligence-led police operations, dedicated resources at retail areas, and investigative efforts have greatly improved clearance rates over the last two years. In 2025, 33% of cases were cleared by either an arrest or a referral of the case to the District Attorney’s Office, compared to 23% in 2024 and 16% in 2023.



# Traffic Enforcement

APD officers are responsible for traffic enforcement and collision response throughout the City and employs a Traffic Unit with a particular focus on compliance with traffic laws.

## Traffic Collisions

In 2025, 755 traffic collisions were reported to APD, down 6% from the 800 reported in 2024. This included 41 collisions involving bicycles and 33 collisions involving pedestrians. The most frequently identified reasons for collisions included improper turning, unsafe speed, and automobile right of way violations.

Of the collisions reported in 2025, one collision involved a fatality and seven collisions involved one or more parties that were severely injured. APD participates in the Fatal Crash Response program review process, implemented by Alameda’s Vision Zero Action Plan. Additional information can be found in the Vision Zero annual report.

## Traffic Stops and Citations

APD officers conducted 7,069 traffic stops in 2025, a 91% increase from 2024. Of those stops, 6,484 resulted in a citation or warning being issued. The most frequently cited offenses included speeding, failure to stop at a stop sign, and driving while using a handheld wireless device.

Top 5 Citations/Warnings Issued 2025	
Speeding	1609
Failure to Stop at Stop Sign	1001
Driving While Using Handheld Device	145
Failure to Wear a Seat Belt	154
Driving Without a License	293



# 2025 Highlights

# CALEA Enrollment

In April, 2025, the Department officially enrolled to begin the process to achieve CALEA (Commission on Accreditation for Law Enforcement Agencies) accreditation. CALEA accreditation is voluntary and agencies agree to comply with set standards that are identified as best practices. Agencies are required to update policies and procedures and then show compliance with each standard.



There are many benefits to achieving CALEA accreditation. Some key benefits include:

- A comprehensive, well thought out, uniform set of written directives
- Strengthened agency accountability, both within the agency and the community
- Potentially limits liability risk exposure because it demonstrates that internationally recognized standards have been met and verified
- Alerts to issues that need attention

The agency is in Year 1 of a three-year process. The Department received grant money to help offset costs associated with accreditation.

# Expanding the Team

## Bicycle Patrol

In the summer of 2025, APD expanded its fleet with a new Bike Patrol Unit. Eight specially trained officers and sergeants now patrol using both manual and electric bicycles, increasing visibility and support in business districts, parks, and along roadways.



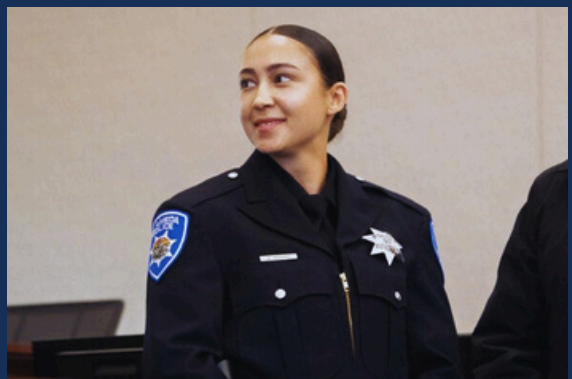
## UAS Team

APD's Uncrewed Aerial Systems (UAS) Team began operations in 2025. During that time, the UAS team supported 12 operations and was integral in the successful apprehension of 7 individuals. The unit has significantly enhanced our ability to canvass large areas during missing person searches.



## 10 New Officers

In 2025, APD brought on 10 new highly qualified officers eager to serve the City of Alameda. These officers include two laterals from other agencies and two recent academy graduates. They further improve APD's outreach to the community with fluency in Cantonese, Spanish, and Lithuanian.

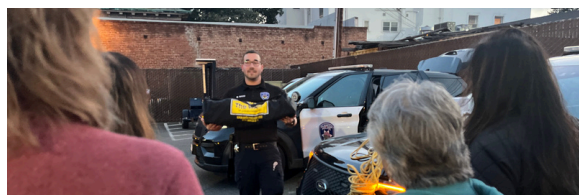


# Community Outreach

Throughout 2025, APD hosted and participated in a wide range of community events and engagement opportunities. With the support of our Crime Prevention Technician, APD welcomed two high school summer interns and educated more than 700 Alameda kindergarteners on helmet and bicycle safety at this year's Safety Town.

APD also hosted a full spring Community Police Academy. This program provides residents with valuable insight into department operations and the opportunity to step into the shoes of our staff. National Night Out once again proved to be a fan favorite, with more than a dozen neighborhoods participating.

In addition, APD supported numerous fundraising efforts benefiting our community, including the Polar Plunge and 5K Run, the Torch Run, and breast cancer awareness initiatives.



# Looking to 2026

Alameda Police Department is always seeking ways to improve its service delivery and provide a safer Alameda. To that end, Command Staff have proposed the following recommendations as goals for 2025. Goals were determined based on challenges experienced in prior years and with a data-driven focus on crime data in Alameda.

## Reduce Crime and Improve Clearance Rates



APD has seen significant improvements in crime rates and clearance rates in the last two years. Continuing this trend, APD aims to achieve a 25% three-year reduction in crime and a 5-percentage point improvement in clearance rates. APD hopes to achieve this goal with increased proactive patrol, intelligence-led operations, and investigations.

## Increase Traffic Enforcement



In 2025, APD substantially increased its traffic enforcement efforts to improve safety of drivers, cyclists, and pedestrians. In 2026, APD aims to continue its efforts with a 10% increase in traffic enforcement educational interactions by both patrol and its growing traffic enforcement unit.

## Increase Community Outreach and Engagement



APD works not just *for* the community, but *with* the community. In 2026, APD will be increasing opportunities to meet with patrol officers at engagement events and Community Police Academies. In addition, APD is improving its access to connect with APD digitally to get information on crime and safety in the community.

## Improve Officer Growth Opportunities and Capabilities



In 2026, APD hopes to continue to hiring of top-notch officers and to improve opportunities for officers to improve their education and capabilities. APD will be engaging in employee wellness and career development opportunities. In addition, APD will be increasing opportunities for officers to develop and management intelligence-led, problem-oriented policing projects.



# Alameda Police Department



## Contact Us

**Non-Emergency Line: 510-337-8340**

**Media Inquiries: 510-747-4714**

**Alameda Police Department**

**1555 Oak Street**

**Alameda, CA 94501**