

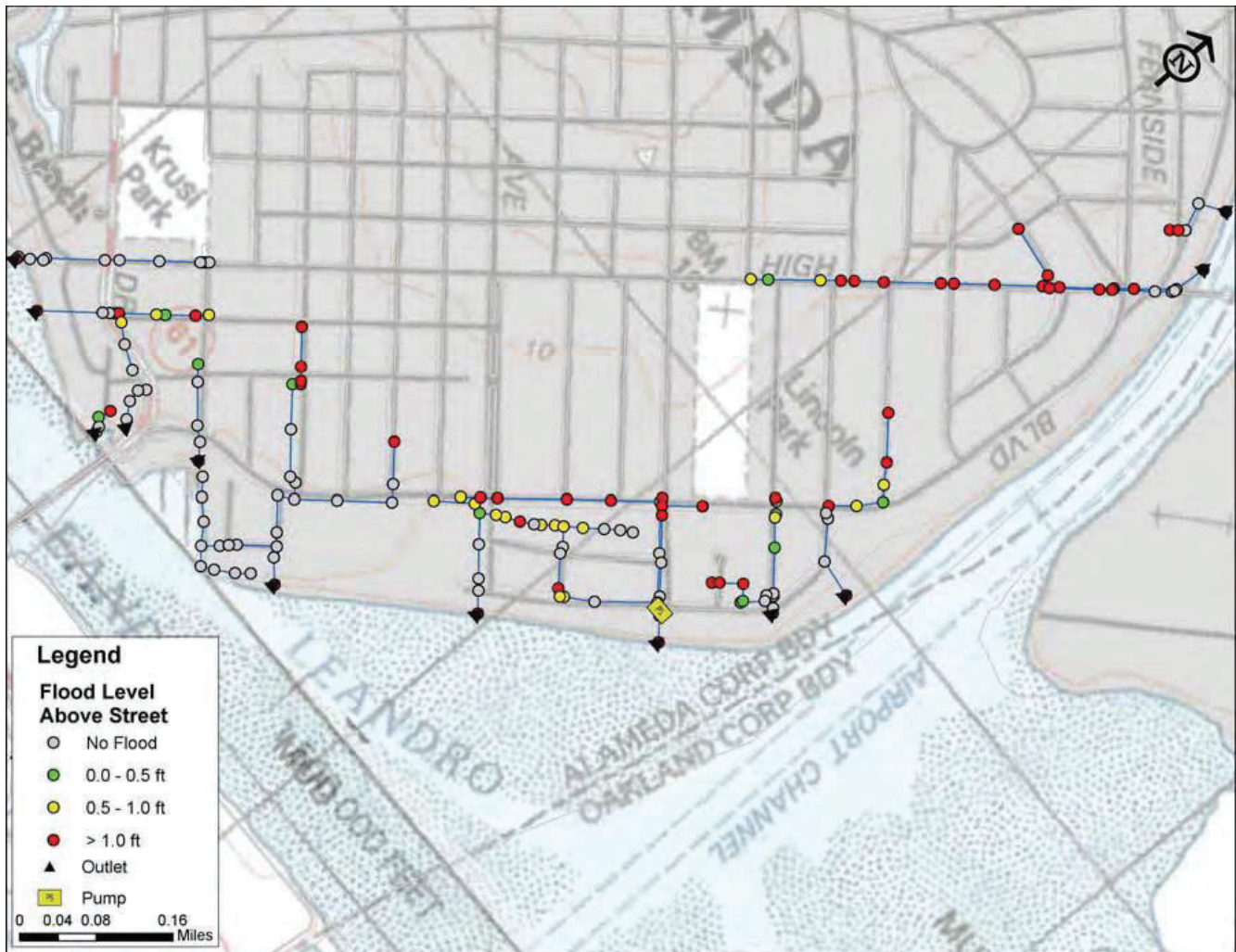
A scenic photograph of a bridge over water at sunset. The sky is filled with large, golden clouds, and a single bird is visible in flight. The bridge has a white railing, and a person is riding a bicycle on the right side. The water reflects the warm light of the setting sun.

Appendix H Additional Maps

June 2022

Modeled Flooding of Stormwater Assets at 25-Year Storm Event

Alameda Eastside Area Existing 25-Year Flooding Depths



Source: Storm Drain Master Plan, Alameda, California, 2008, Schaaf & Wheeler, Appendix A

Figure A-3: Alameda North Central Area Existing 25-Year Flooding Depth

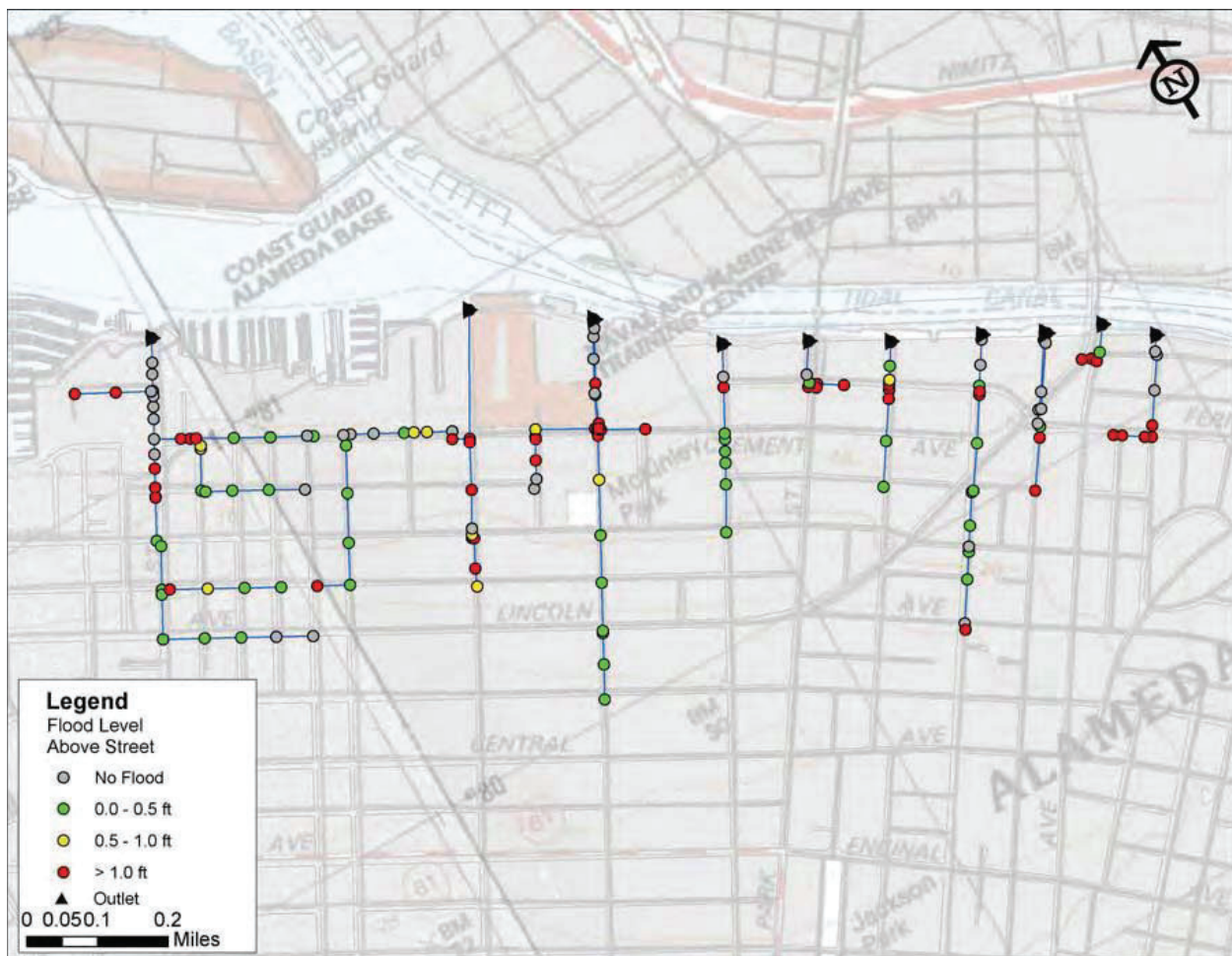


Figure A-5: Alameda Northside Area Existing 25-Year Flooding Depths

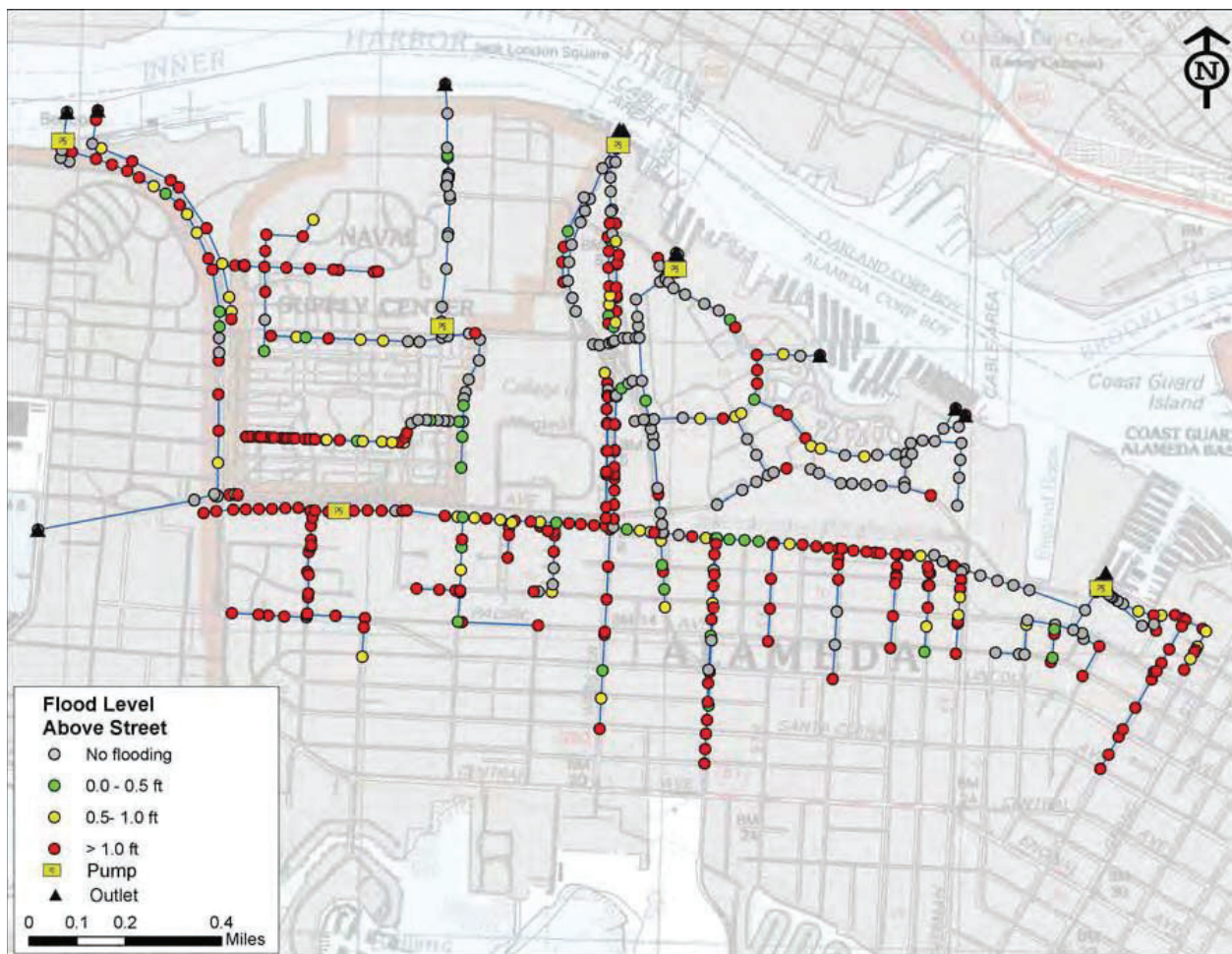


Figure A-7: Alameda South Area Existing 25-Year Flooding Depths

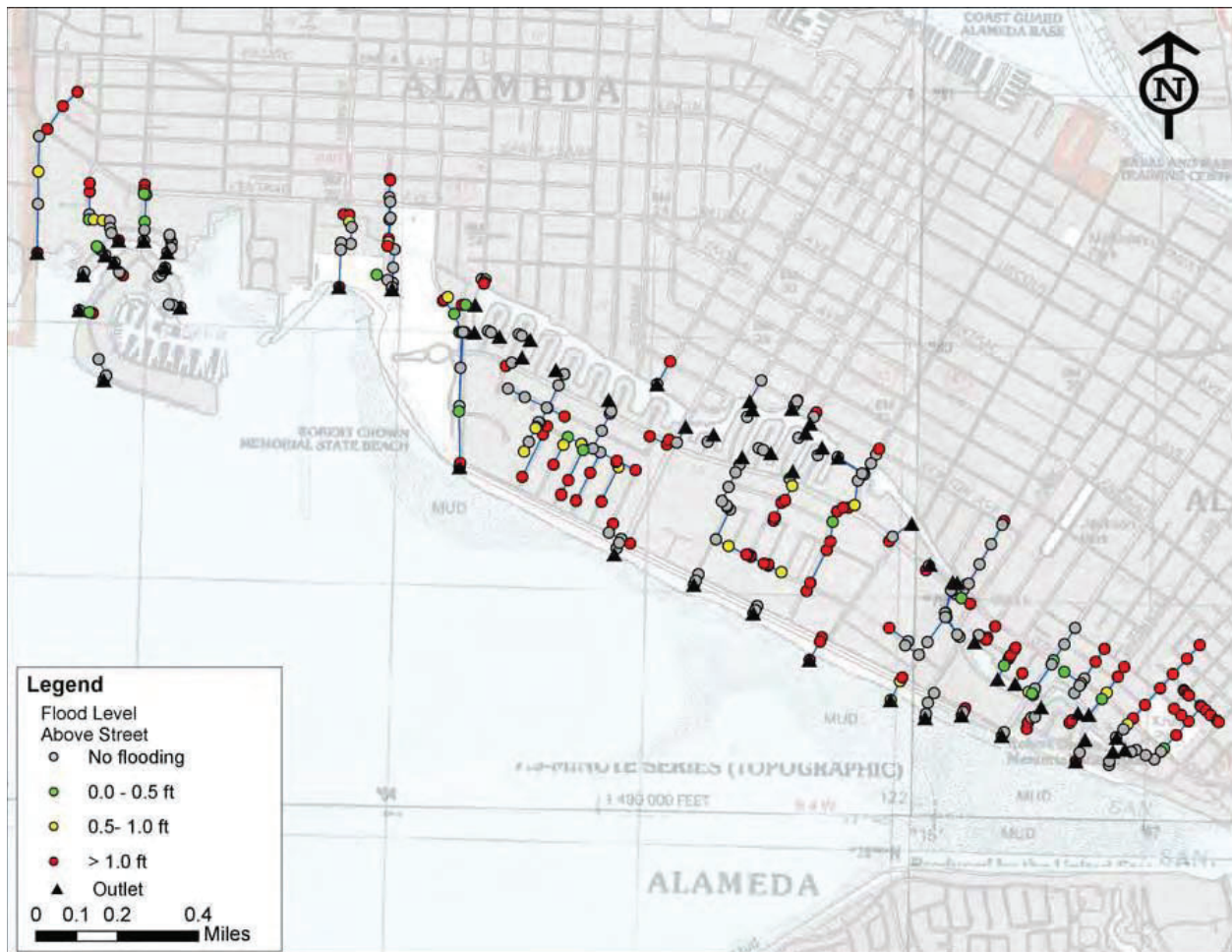


Figure A-9: Bay Farm East Area Existing 25-Year Flooding Depths

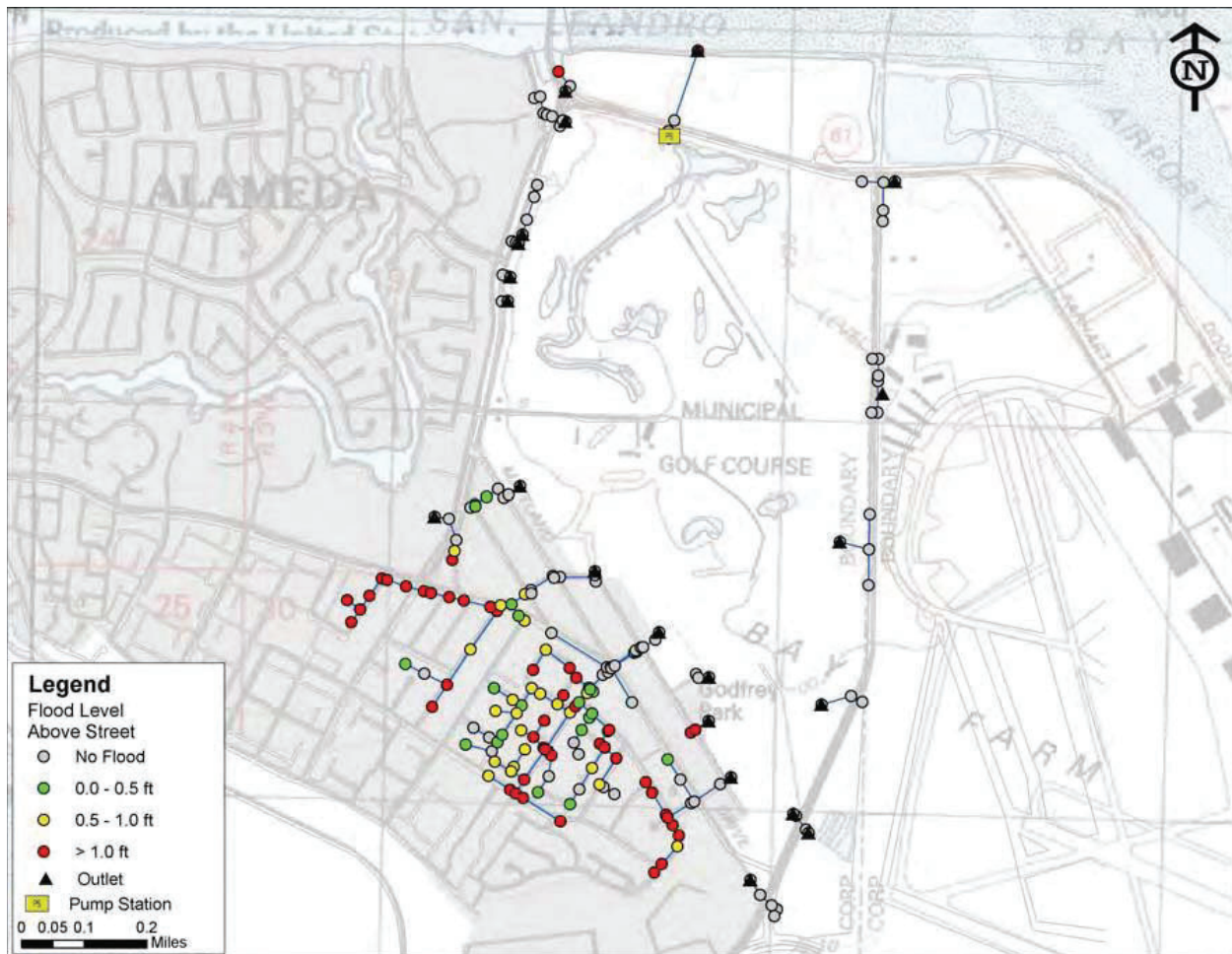


Figure A-11: Bay Farm North Area Existing 25-Year Flooding Depths

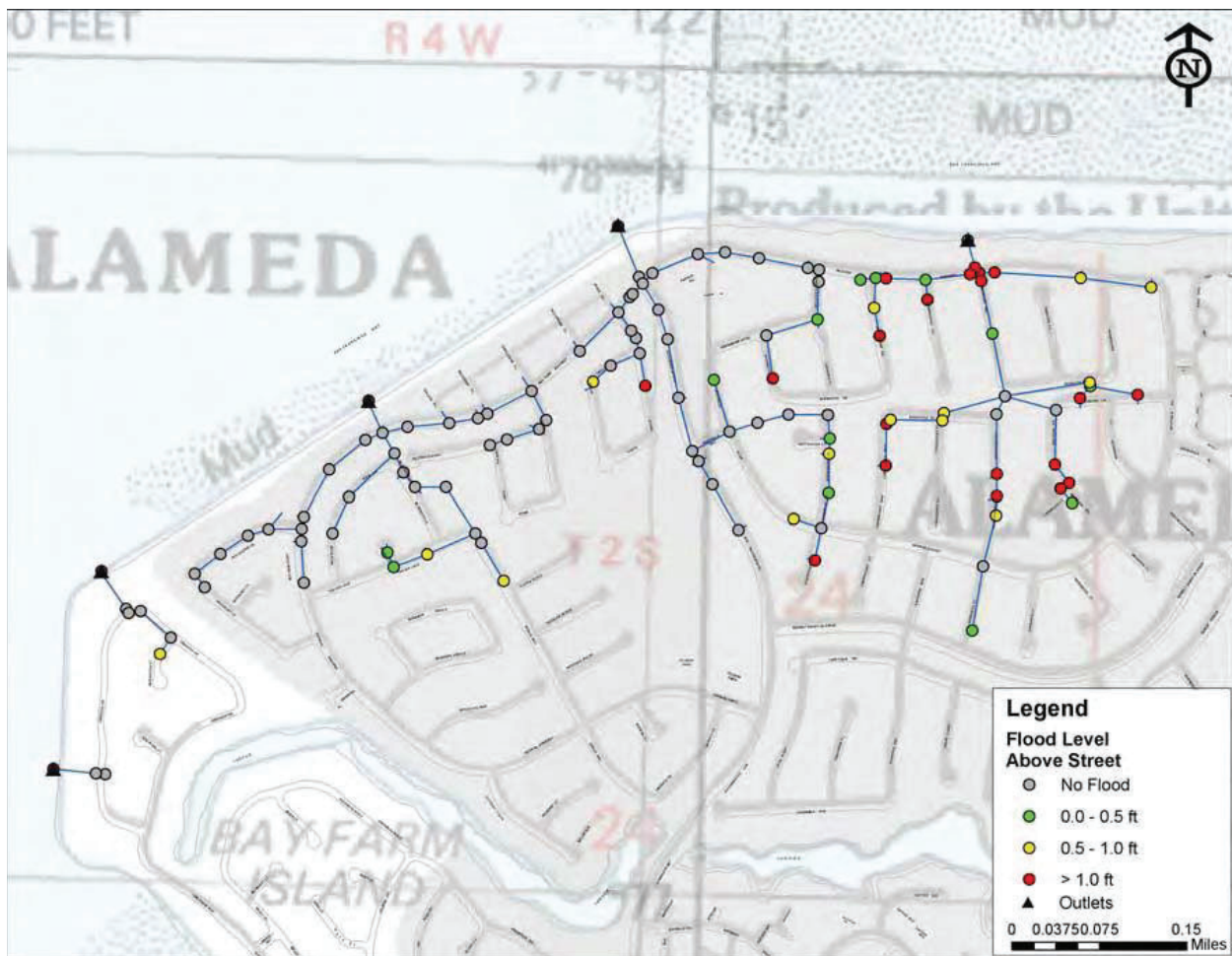


Figure A-13: Bay Farm Central Area Existing 25-Year Flooding Depths

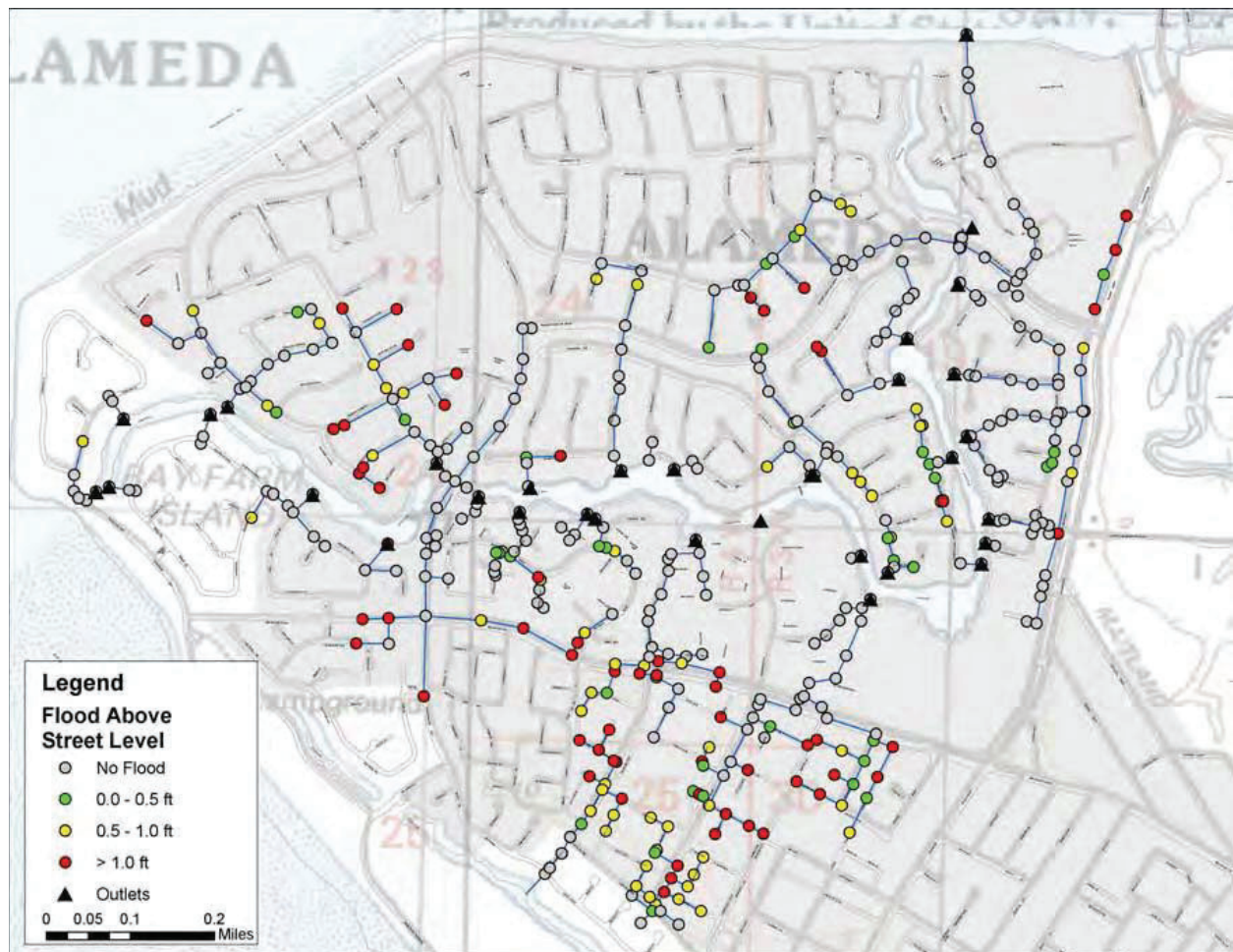
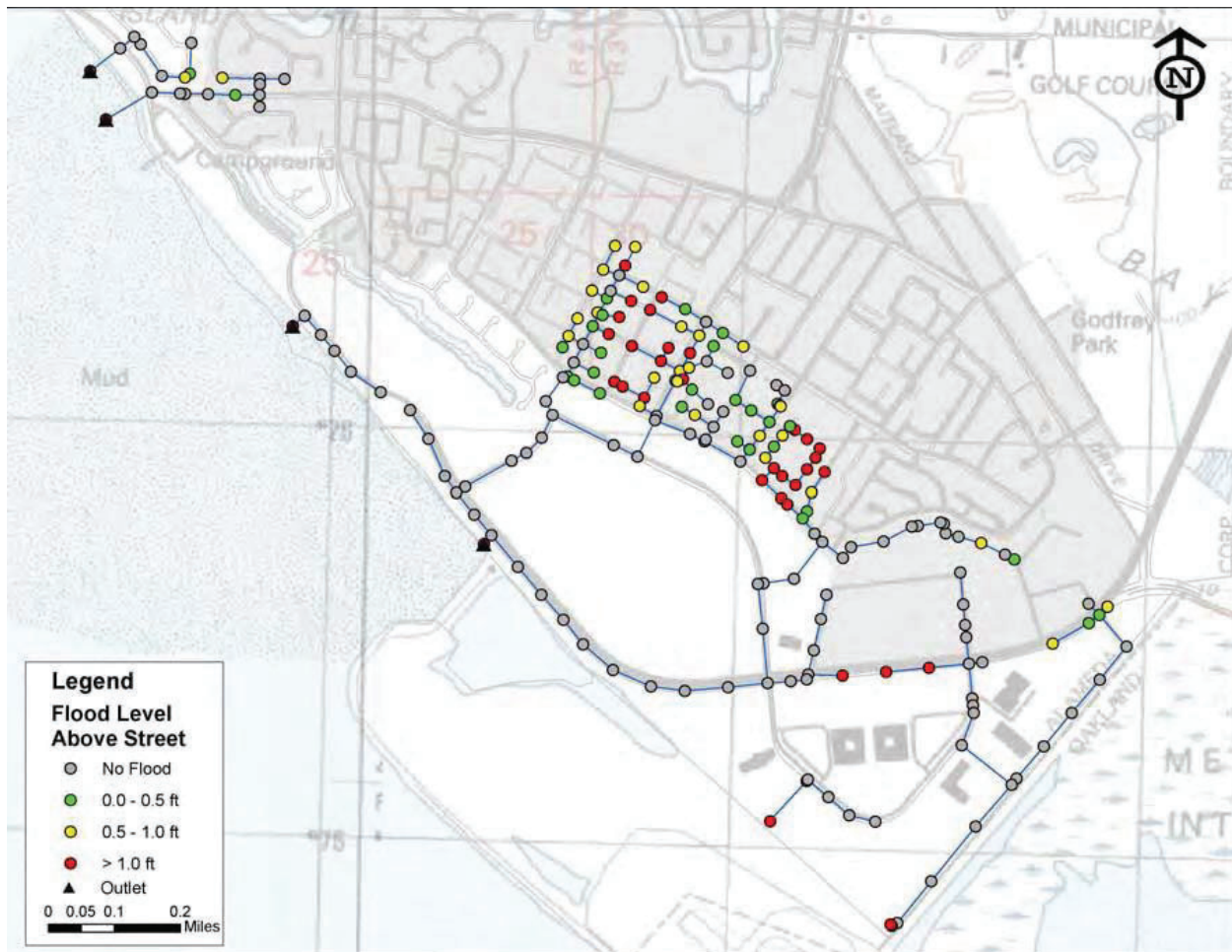


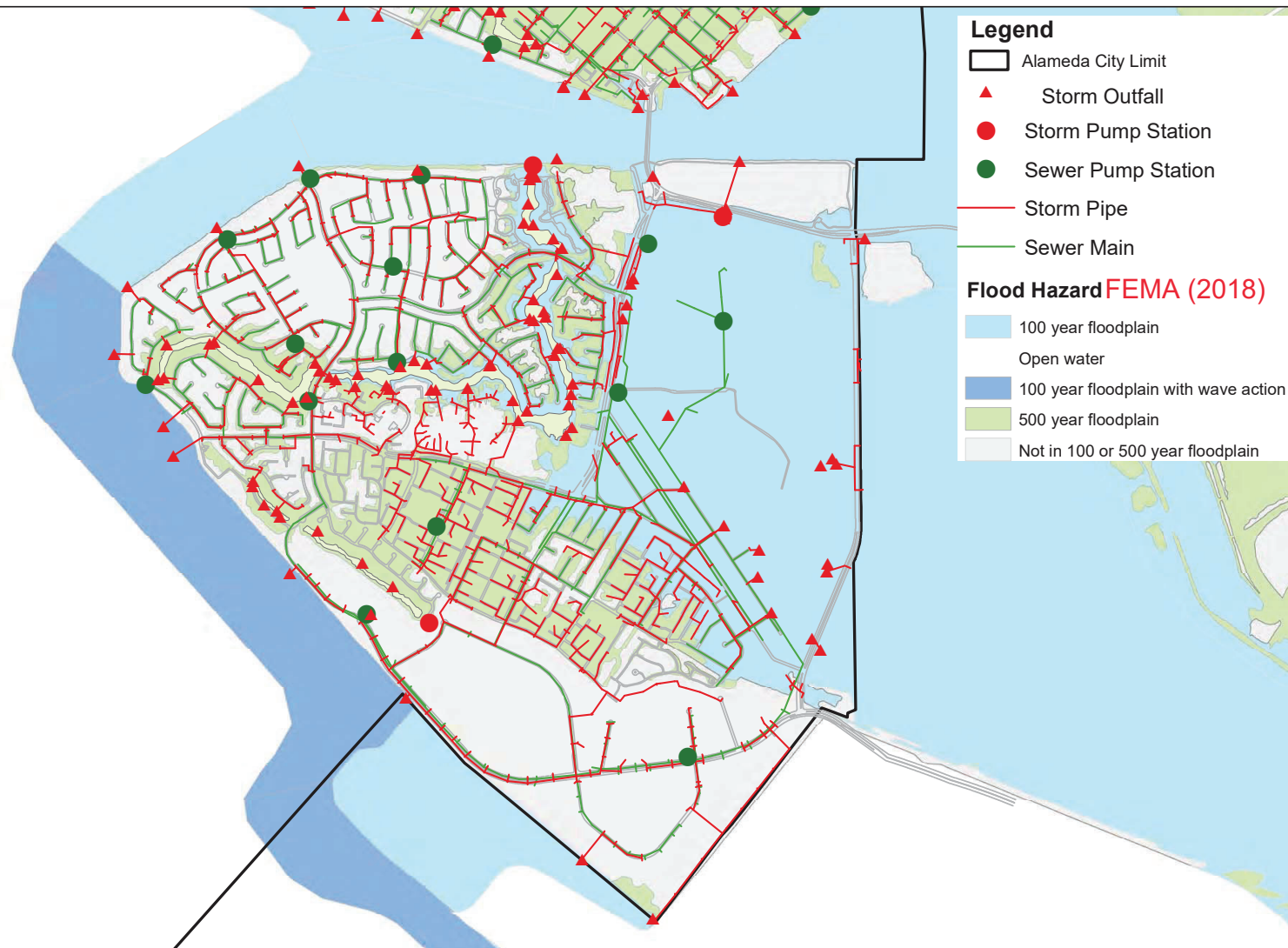
Figure A-15: Bay Farm South Area Existing 25-Year Flooding Depths



**Location of City Stormwater and Wastewater Assets
in Relation to Current FEMA 100 Year-Flood Zone
(and Sea Level Rise: a Future 42" Total Water Level Above MHHW)**



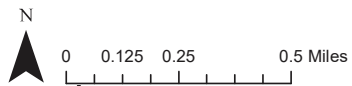
This also reflects a 42" Total Water Level above MHHW under future sea level rise conditions.



Location of City Sewer and Storm Facilities
in Relation to FEMA Current 100 and 500 Year Flood Zones

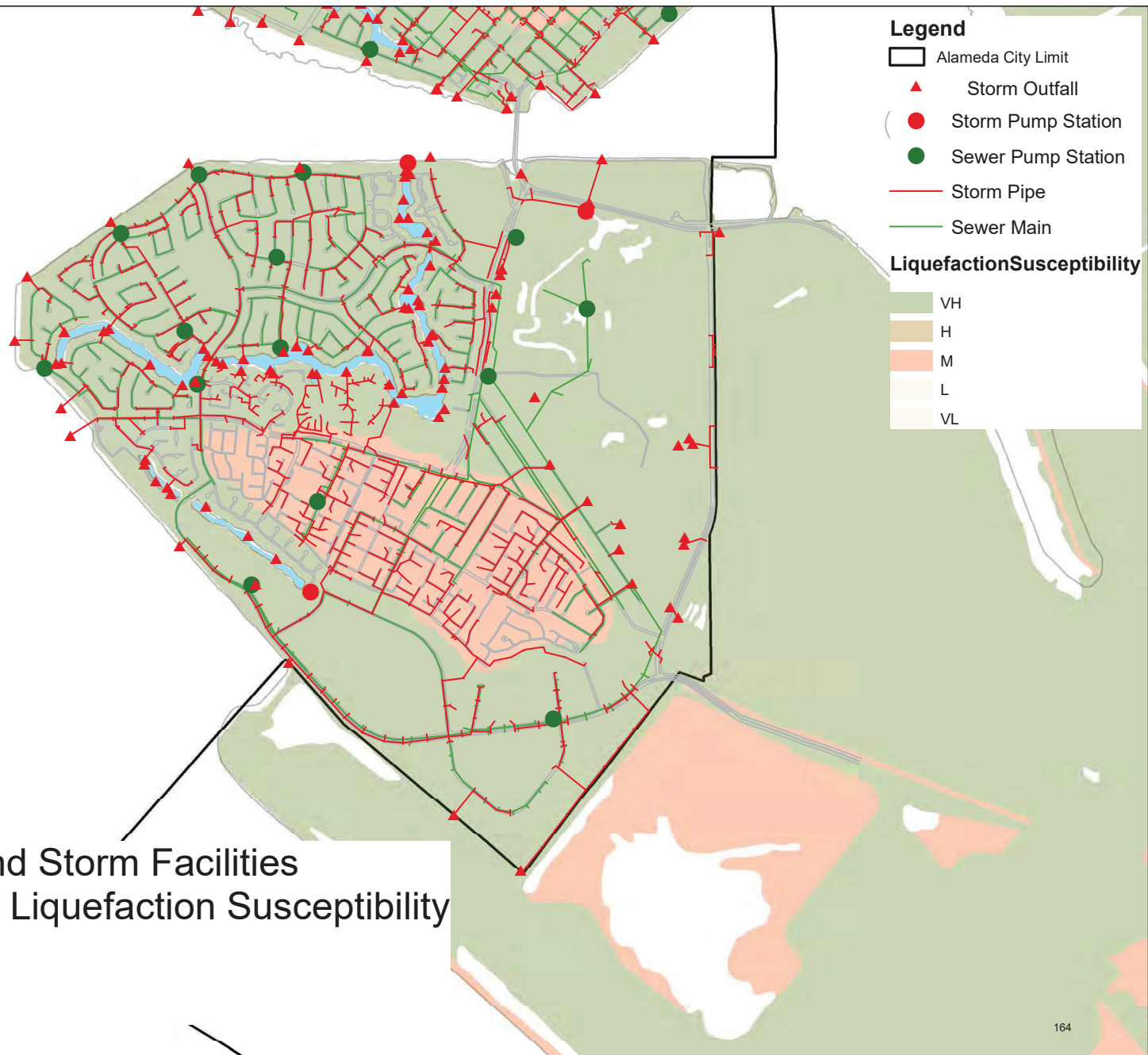
This also reflects a 42" Total Water Level above
MHHW under future sea level rise conditions.

Page 2 of 2



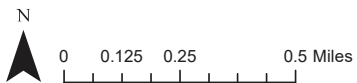
**Location of City Stormwater and Wastewater Assets
in Relation to Earthquake Liquefaction Susceptibility**



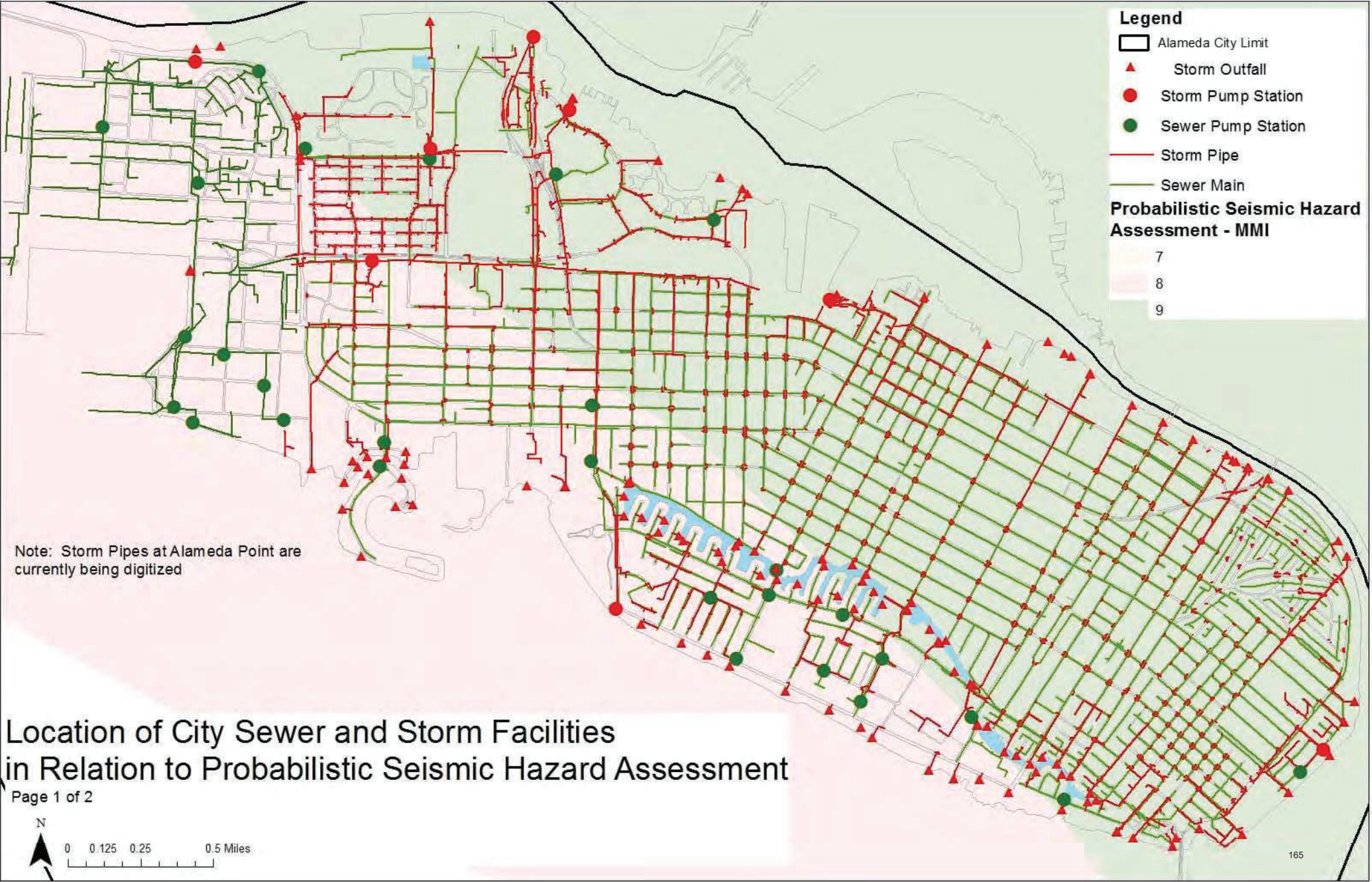


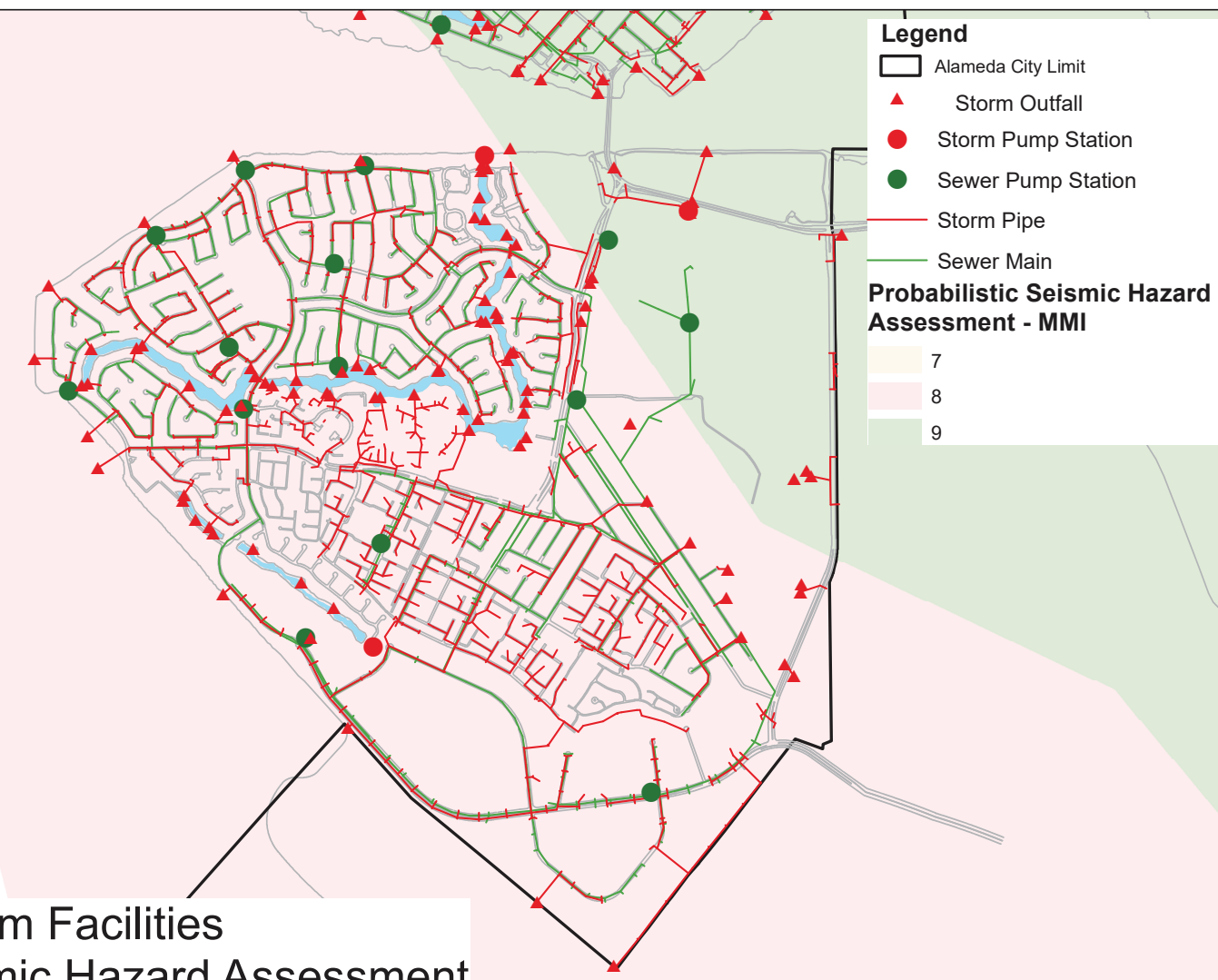
Location of City Sewer and Storm Facilities in Relation to Earthquake Liquefaction Susceptibility

Page 2 of 2



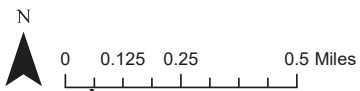
**Location of City Stormwater and Wastewater Assets
in Relation to Probabilistic Seismic Hazard Assessment**



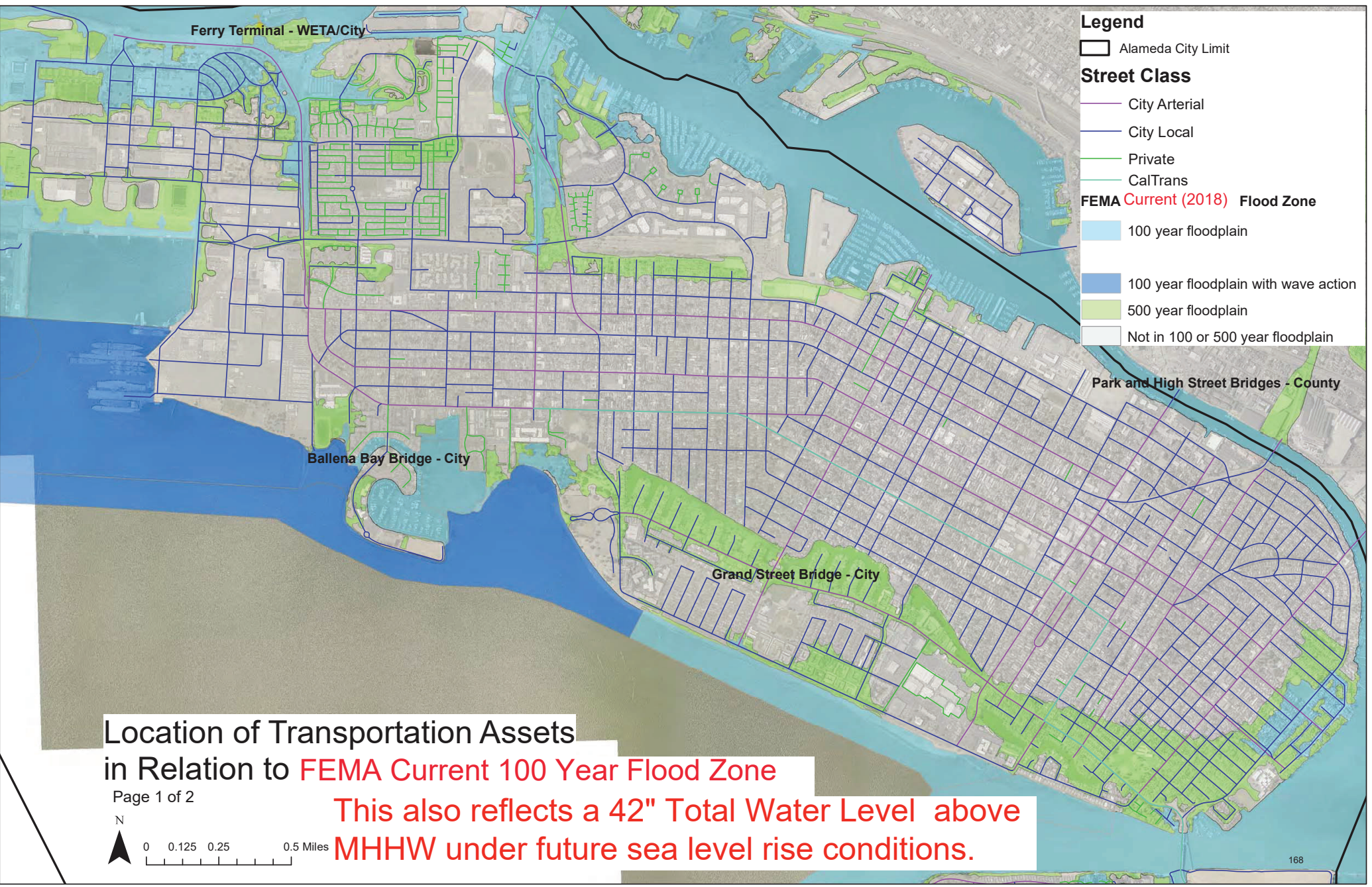


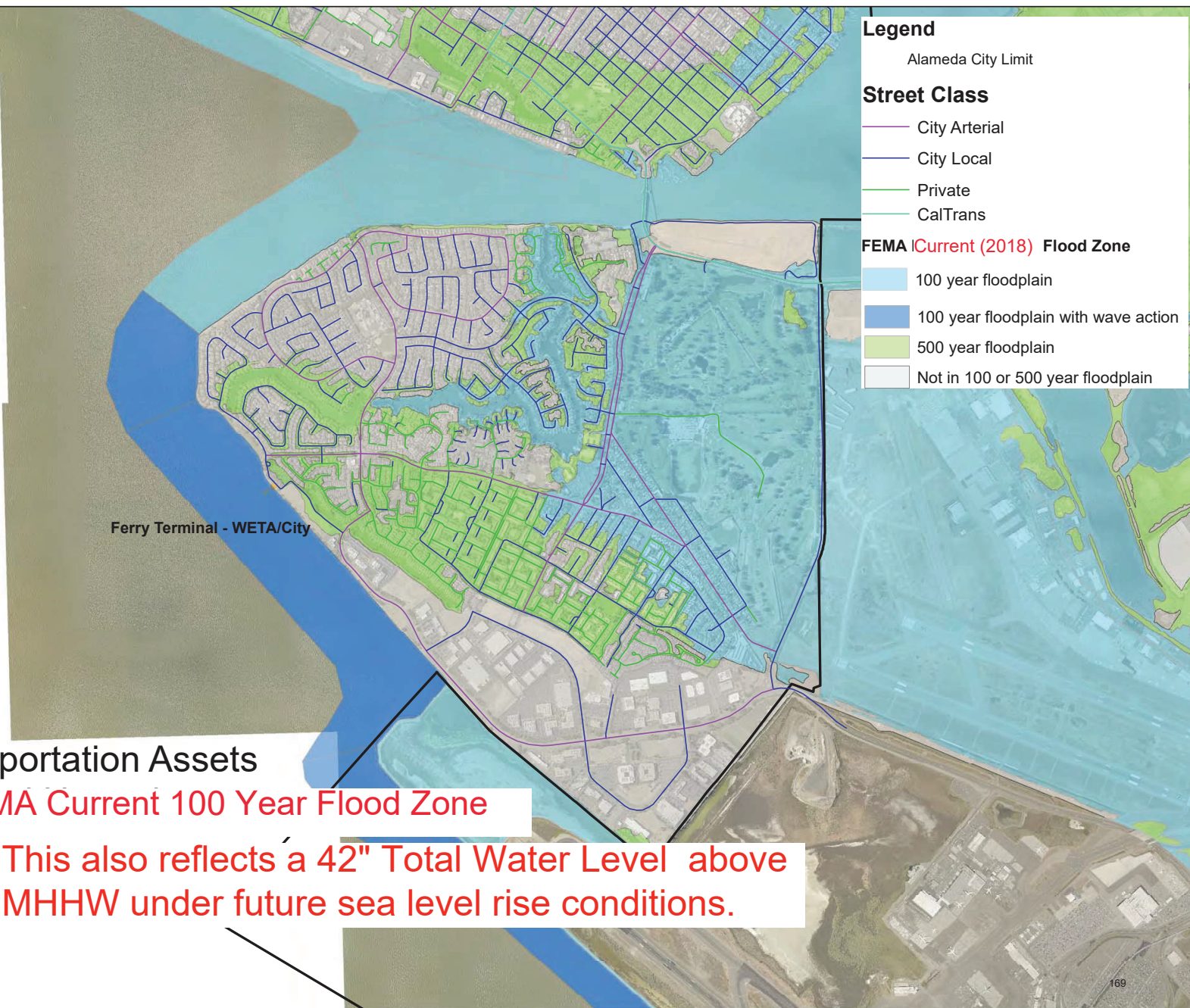
Location of City Sewer and Storm Facilities
in Relation to Probabilistic Seismic Hazard Assessment

Page 2 of 2



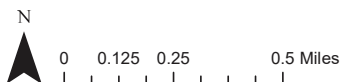
**Location of City Transportation Assets
in Relation to Current FEMA 100 Year-Flood Zone
(and Sea Level Rise: a Future 42" Total Water Level Above MHHW)**





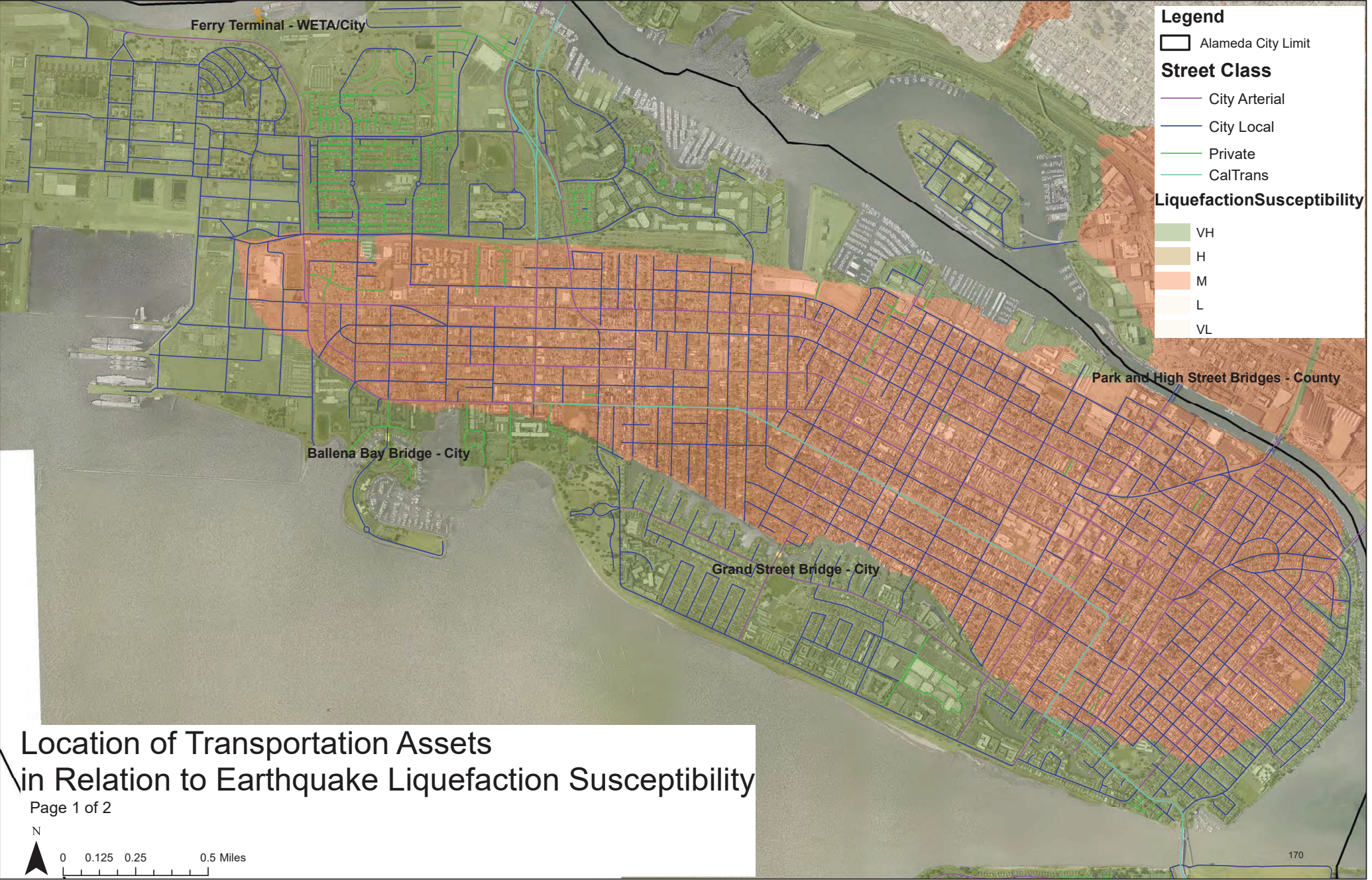
Location of Transportation Assets in Relation to FEMA Current 100 Year Flood Zone

Page 2 of 2



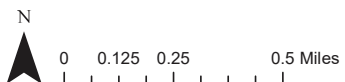
This also reflects a 42" Total Water Level above MHHW under future sea level rise conditions.

**Location of City Transportation Assets
in Relation to Earthquake Liquefaction Susceptibility**



Location of Transportation Assets in Relation to Liquefaction Susceptibility

Page 2 of 2



Ferry Terminal - WETA/City

Legend

Alameda City Limit

Street Class

City Arterial

City Local

Private

CalTrans

Liquefaction Susceptibility

VH

H

M

L

VL

**Location of City Transportation Assets
in Relation to Probabilistic Seismic Hazard Assessment**

