



FOR LEASE

# HISTORICAL ALAMEDA POINT HANGAR BUILDING

1190 W. Tower Avenue | Alameda, California

## Property Highlights

- Unique, High-Functioning Hangar Building
- ±110,561 SF
- In-Place Partial-Shell Office
- Dedicated Yard Space
- Large, Grade-Level Hangar Doors (tenant to confirm condition)
- ±50' Clear Height
- Single-Column (Clear Span)
- Heavy Power Service (Alameda Municipal Power)
- Zoned AP-AR Adaptive Reuse (tenant to confirm approved uses)
- Great Natural Light
- Built in 1941

**Rental Rate: \$0.95/SF/Month NNN**



**John H. McManus, MCR, CCIM**  
Vice Chairman  
+1 510 465 8000  
john.mcmanus@cushwake.com  
LIC #01129064

**Ted J. Anderson**  
Managing Director  
+1 510 465 8000  
ted.anderson@cushwake.com  
LIC #0133200

**Andrew Schmieder**  
Director  
+1 510 465 8000  
andrew.schmieder@cushwake.com  
LIC #01828740

555 12th Street, Suite 1400  
Oakland, CA 94607  
main +1 510 465 8000  
fax +1 510 465 1350  
**cushmanwakefield.com**

©2022 Cushman & Wakefield. All rights reserved. The information contained in this communication is strictly confidential. This information has been obtained from sources believed to be reliable but has not been verified. NO WARRANTY OR REPRESENTATION, EXPRESS OR IMPLIED, IS MADE AS TO THE CONDITION OF THE PROPERTY (OR PROPERTIES) REFERENCED HEREIN OR AS TO THE ACCURACY OR COMPLETENESS OF THE INFORMATION CONTAINED HEREIN, AND SAME IS SUBMITTED SUBJECT TO ERRORS, OMISSIONS, CHANGE OF PRICE, RENTAL OR OTHER CONDITIONS, WITHDRAWAL WITHOUT NOTICE, AND TO ANY SPECIAL LISTING CONDITIONS IMPOSED BY THE PROPERTY OWNER(S). ANY PROJECTIONS, OPINIONS OR ESTIMATES ARE SUBJECT TO UNCERTAINTY AND DO NOT SIGNIFY CURRENT OR FUTURE PROPERTY PERFORMANCE.

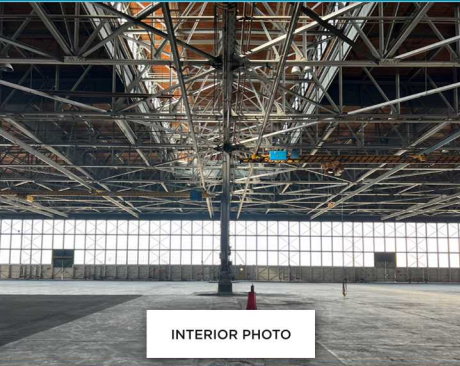




FOR LEASE

# HISTORICAL ALAMEDA POINT HANGAR BUILDING

1190 W. Tower Avenue | Alameda, California



INTERIOR PHOTO



**John H. McManus, MCR, CCIM**  
Vice Chairman  
+1 510 465 8000  
john.mcmanus@cushwake.com  
LIC #01129064

**Ted J. Anderson**  
Managing Director  
+1 510 465 8000  
ted.anderson@cushwake.com  
LIC #0133200

**Andrew Schmieder**  
Director  
+1 510 465 8000  
andrew.schmieder@cushwake.com  
LIC #01828740

555 12th Street, Suite 1400  
Oakland, CA 94607  
main +1 510 465 8000  
fax +1 510 465 1350  
**cushmanwakefield.com**