

City of Alameda

2023-2025 CAPITAL BUDGET

PROJECT DESCRIPTIONS

Each project approved by City Council as part of the 2023-2025 CIP has a project sheet that describes what the project aims to accomplish in the next two years, how it relates to previous or ongoing projects, what is planned for future years, and the proposed budget and funding sources.

DELIVERING ON RESILIENCY

2023-2025 CAPITAL BUDGET

Project Description

PAVEMENT MANAGEMENT

Lead Department: Public Works **Project Type:** Pavement, Signals and Lighting
Project Summary: Pavement Management for the City's 127 miles of roadways
CIP No.: C11000

Project Description:

The City’s pavement management program consists of various preventive maintenance and rehabilitation treatments including crack seals, slurry seals, overlays, and major roadway reconstruction. With 127 centerline miles of streets and a replacement value of \$439 million, pavement treatments and candidate streets are carefully selected to maximum the return on our investment.

As part of developing a three-year paving plan, the City has been divided into three zones and projects will rotate throughout the City. Locations and treatments are typically finalized and designed during one year and bid and constructed in the following year. The City sometimes receives grants for specific streets, which are constructed as smaller, separate projects. Other corridor safety projects have pavement management components.

This major construction program will treat approximately 4 or more miles of street per year. Work will include repair of underlying material, adjustments to concrete as needed to restore drainage (curbs, gutters, driveways, culverts, curb ramps), reinstallation or improvements to pavement striping, and green infrastructure to capture stormwater runoff. This project helps protect and maintain the City’s street surfaces, improve stormwater surface drainage, and improve mobility for all users.

In addition to the annual major construction project, other activities include master planning; coordination with utility companies and developers; biennial field inspection of pavement condition; updating the GIS database; yearly reporting to funding sources; and grant acquisition and management. Repairs and upgrades will be made in accordance with the City’s Complete Streets Policy, Mobility Element of the General Plan, ADA Transition Plan, and Active Transportation Plan. For FY 23-24, \$300,000 is included for additional pothole repairs due to heavy winter storms.



Results from 2021-2023:

The City treated 8.5 miles of roadway. As a result, the City’s overall Pavement

Future Years

This is an ongoing project. The City’s PTAP-23 report found that an investment of \$6.2M a year is recommended to maintain the current condition of the roadway network. Lower funding will result in declining conditions.

Project Funding		
Fund	FY 23-24	FY 24-25
RMRA ¹	\$2,300,000	\$2,000,000
Vehicle Reg.	\$200,000	\$300,000
Measure BB LSR	\$1,500,000	\$1,500,000
Waste Fund	\$318,000	\$318,000
Sewer Services	\$360,000	\$373,000
Total 2023-25	\$9,169,000	

¹The Road Maintenance Rehabilitation Account (RMRA) funding comes from the 2017 California voter- approved Gas Tax increase also known as SB-1

Project Description

SIGNS, PAVEMENT MARKINGS, AND CURB PAINTING

Lead Department: Public Works

Project Type: Pavement, Signals and Lighting

Project Summary: This project provides proactive maintenance of the City's inventory of street signs, painted curbs, and pavement markings

CIP No.: C12000

Project Description:

This project continues the City's replacement of sign, pavement marking and curb painting assets. Current funding levels support a program that addressed regulatory and safety related signs and markings at City intersections. Each fiscal year, funds are focused in a zone representing one-fourth of the City. The project typically focuses on the zone that was treated in the Pavement Management Project from the previous year. In FY 22-23, the Sign & Striping Maintenance Project focused on longitudinal lines citywide, and the FY 23-24 project is planned to follow suit. The project is expected to return to intersection focused, zone oriented projects in FY 24-25.

A fully funded project would improve safety for all street users and improve neighborhood aesthetics by replacing regulatory signs every seven years, non-regulatory signs every 10 years, pavement markings every five years, and curb painting every 10 years.



Results from 2021-2023:

In 2022, work was performed at 74 intersections in Bay Farm Island, 11 of which received pedestrian improvements, and bike lane buffers were refreshed/added on Aughinbaugh Way. In 2023, striping will be on Main Street, between Ralph Appezato Memorial Parkway and Navy Way, including bike lanes within these limits.

Future Years

Future revenue increases in transportation funds would improve Alameda's level of servicing these assets, address new assets installed as part of street safety projects and implement any improvements as called out by plans, such as the Active Transportation Plan and Vision Zero Action Plan.

Project Funding		
Fund	FY 23-24	FY 24-25
Measure BB LSR	\$250,000	\$250,000
Total 2023-25	\$500,000	

Project Description

TRAFFIC SIGNALS AND SYSTEMS

Lead Department: Public Works

Project Type: Pavement, Signals and Lighting

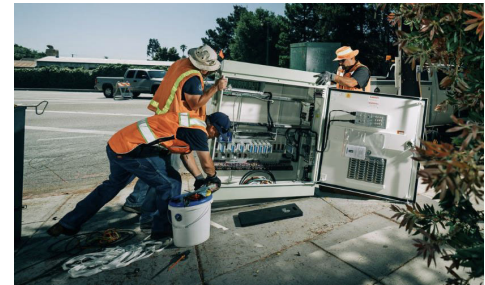
Project Summary: This project supports the City's transportation infrastructure through capital replacement and

CIP No.: C13000 upgrades to traffic signals and associated systems

Project Description:

The City of Alameda has 89 signalized intersections, which have varying levels of capabilities to support traffic operations. This project funds the systematic upgrade of signal cabinets and controllers which have reached the end of their useful life or are at high-priority intersections. It also installs battery backup systems to keep traffic signals operational in the event of a power outage. Where needed, in-pavement detection loops are replaced video detection. This work will increase system reliability and improve performance, safety and functionality for vehicles, transit, bicycles, and pedestrians at these intersections. In addition to traffic signals, this project installs Rectangular Rapid Flash Beacons (RRFBs) at unsignalized pedestrian crossings to improve safety and comfort.

This project also supports the ongoing data collection (traffic speeds and volumes), coordinating with the Alameda County Transportation Commission, Metropolitan Transportation Commission, Caltrans, AC Transit, and Caltrans.



Results from 2021-2023:

The City implemented a new signal policy that includes implementation of leading pedestrian intervals and automatic pedestrian signals at certain intersections. The City continued to replace aging controllers and cabinets, installed battery backup systems and detectors, and coordinated with Caltrans on upgrades to 7 signals and installation of 6 new RRFBs on SR 61.

Future Years

Continued investment will be necessary to maintain reliability and improve performance. This will include replacement of controllers, cabinets, battery backup systems and video detection.

Project Funding		
Fund	FY 23-24	FY 24-25
Measure BB - LSR	\$500,000	\$500,000
DIF - Transport.	\$250,000	\$250,000
Total 2023-25	\$1,500,000	

Project Description

SIDEWALKS

Lead Department: Public Works

Project Type: Pavement, Signals and Lighting

Project Summary: Maintain sidewalks for pedestrian circulation, increased accessibility and reduced liability

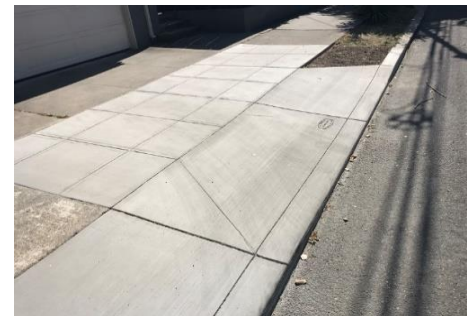
CIP No.: C14000 claims

Project Description:

The City of Alameda has over 260 miles of sidewalk. Sidewalk damage and displacement often occurs due to street trees planted between the curb and gutter and the sidewalk where tree roots lift the sidewalk and can create a vertical displacement or trip hazard. Unfortunately, many tree species planted years ago have since been found to lift and damage the sidewalk.

The City has 5 sidewalk zones under this program. Alameda Point is addressed separately with Base Reuse funds. Each year funds are focused in a zone to make sidewalk repairs caused by City-maintained street trees. During this two year budget, funds will be focused in Zone 1 (Bay Farm Island) and on Zone 5, Broadway and east. Where the damage to the sidewalk is not caused by a City-maintained street tree, the responsibility for repair falls to the adjacent property owner. In these instances, the City sends a letter to the property owner identifying the condition, requiring its repair, and asking to be informed when repairs are complete.

The City deploys both a concrete cutting and remove and replace methodologies to optimize available funds in removing tripping hazards. Concrete cutting can address vertically offset sidewalks without having to replace the existing concrete. This significantly less expensive method creates a smooth transition and complies with all accessibility requirements. Concrete cutting also provides significant savings in water use and greenhouse gas emissions. Larger vertical offsets exceeding 1¼ inches will still need to be removed and replaced, as will concrete panels that are crushed or otherwise damaged.



Results from 2021-2023:

The program removed more than 7,000 potential hazards during the past two year budget cycle, including cutting and sidewalk replacement locations.

Future Years

Zones 4 and 3 will be the areas of focus in the next two year capital budget. This covers Broadway west to Webster.

Project Funding		
Fund	FY 23-24	FY 24-25
Measure BB LSR	\$1,000,000	\$1,000,000
Total 2023-25	\$2,000,000	

DELIVERING ON RESILIENCY

2023-2025 CAPITAL BUDGET

Project Description

STREET, PARK, AND PARKING LOT LIGHTING

Lead Department: Public Works

Project Type: Pavement, Signals and Lighting

Project Summary: Maintain the City's street, park pathway, and parking lot lighting

CIP No.: C16000

Project Description:

Public Works is responsible for the over 7,000 street, park pathway and public parking lot lights. Alameda has a diverse mix of light fixtures and poles, some of which date back to the 1800's and are designated historic. Others are decorative while some are traditional "cobra head" style lights.

Now that the street, park pathway and public parking lot lights are LED, service requests for lamps out have declined and response times are quicker. The program's focus now is replacing poles knocked down by vehicle accidents and replacing deteriorated or otherwise poor condition poles.

Staff is nearly complete with a survey of light utility box condition, particularly those in travel ways. With this condition data, box replacements are expected to be executed in FY 23/24 and therefore an additional \$300K is appropriated.



Results from 2021-2023:

Replaced over 20 street, parking lot and/or pathway poles. Made extensive spot repairs to underground electrical services feeding street lights. Completed survey of streetlight box condition, particularly those in travel ways.

Future Years

Future work and lighting replacements will be based on condition. It is anticipated that additional funding may be necessary in future budget cycles to adequately maintain and repair the City's streetlights.

Project Funding		
Fund	FY 23-24	FY 24-25
General Fund	\$600,000	\$300,000
Total 2023-25	\$900,000	

Project Description

STREET LIGHTING CONDUIT REPLACEMENT

Lead Department: Public Works **Project Type:** Pavement, Signals and Lighting
Project Summary: Maintain the City's street, park pathway, and parking lot lighting
CIP No.: C16000

Project Description:

Public Works is responsible for the over 7,000 street, park pathway and public parking lot lights. This includes the light fixtures, poles and electrical infrastructure to power the lights. About one-third of the lights are fed by overhead power with the remaining two-thirds fed by an underground electrical service. Much of the City's underground streetlight infrastructure was installed with the original development and is well past its useful life. This results in unreliable service delivery and costly spot repairs to keep the lights functioning.

Years of underinvestment has resulted in deteriorated infrastructure and significant deferred maintenance and replacement costs. In 2019-21, this program executed a first phase of systematic replacement of the underground electrical infrastructure serving street lights. Phases are identified based on condition and available funding. The focus for the 2023-25 budget will be the continued systematic replacement of underground service conduit to ensure continuity of service. The planned project is estimated to include Yale, Harvard, Fremont and Cambridge Drives.



Results from 2021-2023:

Completed design and will soon start construction to replace the underground street light electrical infrastructure on Fernside from Tilden to High Streets.

Future Years

Future phases will be consistent with the master plan and available funding. Additional funding in future budgets will be needed for subsequent phases of underground streetlight electric service replacement.

Project Funding		
Fund	FY 23-24	FY 24-25
Const. Imp. Tax		\$1,000,000
Total 2023-25	\$1,000,000	

Project Description

OTIS/BROADWAY UTILITY UNDERGROUNDING - STREET LIGHTING

Lead Department: Public Works

Project Type: Pavement, Signals and Lighting

Project Summary: Provide funding for the streetlight portion of the Otis/Broadway Underground Utility District.

CIP No.: C16000

Project Description:

Undergrounding of utilities consists of placing overhead main lines and service lines - including telephone, electric, cable television and other telecommunications - underground in a trench. The City of Alameda has had an underground utility program since 1984 and about half of the city's overhead wires have been moved underground.

The City Council approved the Otis/Broadway Underground Utility District (UUD #38) at its February 19, 2019, meeting. The district boundaries are along Otis Drive from High Street to Broadway Street including streets south of Otis Drive (i.e. Pearl Street, Versailles Avenue, Mound Street, and Court Street) and along Broadway Street from La Jolla to Encinal Avenue.

This project provides funding for the streetlight portion (including poles, fixtures, conduits and pull boxes) of the Otis/Broadway Underground Utility District. Existing streetlights in the area are currently served with overhead wires or mounted on utility poles that will be removed and replaced with new street light poles.



Results from 2021-2023:

AMP completed design for the utility undergrounding project. Construction is expected to begin in 2023 and be completed in 2025.

Future Years

AMP will continue to work with City departments to develop future undergrounding projects.

Project Funding		
Fund	FY 23-24	FY 24-25
General Fund	\$690,645	
Total 2023-25	\$690,645	

DELIVERING ON RESILIENCY

2023-2025 CAPITAL BUDGET

Project Description

SEWER REHABILITATION

Lead Department: Public Works **Project Type:** Sanitary Sewer
Project Summary: Replace sewer pipelines and make emergency repairs
CIP No.: C21000

Project Description:

The City’s sewer system is intended to protect public health and the environment, maintain customer satisfaction, and be cost-effective.

Consistent with the City’s requirements under Final Consent Decree for Case Nos. C09-00186 and 09-05684, and the City’s Sewer Master Plan, the City rehabilitates approximately 3 miles of sewer main per year for years to come. The City’s Sewer Master Plan contains a 20 year Sewer Rehabilitation Capital Improvement Program with prioritization based on pipe condition and age, areas of known problems, consequence of failure and coordination with other utility projects among other factors. The City’s ongoing work to clean and video sewer mains also helps to refine, if needed, the prioritization of sewer rehabilitation work.

The City will construct Years 9 and 10, as identified in the Master Plan’s Sewer Rehabilitation Capital Improvement Program. Year 9 construction is anticipated to begin in September 2023 with construction lasting through July 2024. Year 10 will be designed FY2023/2024 with a new 5-year construction contract anticipated to be awarded in 2024 and construction lasting through July 2025.



Results from 2021-2023:

Alameda rehabilitated approximately 6 miles of sewer pipe per plan and in compliance with the Final Consent Decree.

Future Years

This is an ongoing project. Alameda has a comprehensive sewer rehabilitation plan through 2035.

Project Funding		
Fund	FY 23-24	FY 24-25
Sewer Services	\$7,860,000	\$9,790,000
Total 2023-25	\$17,650,000	

Project Description

STORMWATER MANAGEMENT

Lead Department: Public Works

Project Type: Storm, Lagoons and Shoreline

Project Summary: Rehabilitate and maintain Alameda's stormwater assets to maintain efficient flow and prevent flooding.

CIP No.: C31000

Project Description:

Alameda voters passed a fee in 2019 that will fund capital improvements and operational enhancements to the city's stormwater management system over the next 15 years. This project focuses on rehabilitation and maintenance of Alameda's stormwater assets to maintain efficient flow and prevent flooding.

Projects include outfall protection, operational enhancements to address ponding and poor surface drainage. Work to support the yearly construction program will include cleaning and inspection of pipes; updates to the asset management systems; coordination with land developers; investigation of ponding complaints; coordination with the Federal Emergency Management Agency, San Francisco Bay Conservation and Development Commission, the Army Corps of Engineers, the San Francisco Water Quality Control Board, and others to assess and prepare for flood hazards.



Results from 2021-2023:

Project included Installation of stormwater infrastructure to reduce flooding along Shore Line Drive, structural repairs to the Bayview Weir, which controls water levels in the main island lagoon system, automation controls for controlling water levels for the Bay Farm Island lagoon system, floodplain management for FEMA compliance.

Future Years

The City will implement priority projects in Stormwater Fee report, including tidal protection for City's shoreline outfalls, replacement of storm drain pipes, culvert replacements and drainage improvements to reduce surface ponding.

Project Funding		
Fund	FY 23-24	FY 24-25
Stormwater	\$675,000	\$675,000
Total 2023-25	\$1,350,000	

Project Description

GREEN INFRASTRUCTURE

Lead Department: Public Works

Project Type: Storm, Lagoons and Shoreline

Project Summary: This project supports implementation of green stormwater infrastructure

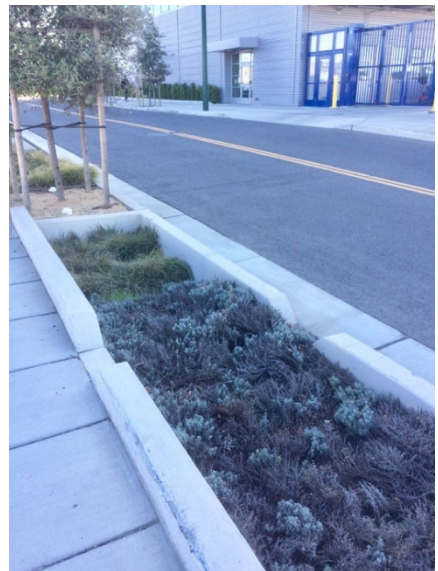
CIP No.: C33000

Project Description:

Green stormwater infrastructure refers to a sustainable system that slows runoff by dispersing it to vegetated areas, harvests and uses runoff, promotes infiltration and evapotranspiration, and uses bioretention and other low impact development practices to clean stormwater runoff.

The City developed a Green Infrastructure Plan in 2019 to guide the identification, implementation, tracking, and reporting of green infrastructure projects within the City of Alameda (City), in accordance with the Municipal Regional Stormwater Permit (MRP), Order No. R2-2015- 0049, adopted by the San Francisco Bay Regional Water Quality Control Board (RWQCB) on November 15, 2015.

The project provides funding to integrate green infrastructure into capital projects, such as streetscapes, sea level rise adaptation projects, and stormwater pump station improvements.



Results from 2021-2023:

The city integrated green infrastructure into major corridor improvement projects and began incorporating green infrastructure best practices into the pavement management program.

Future Years

Green infrastructure is expected to become integrated with capital improvement projects, such as streetscape improvements and rehabilitation of the City's stormwater infrastructure, as required by the Municipal Regional Stormwater Permit.

Project Funding		
Fund	FY 23-24	FY 24-25
Tidelands	\$100,000	\$100,000
Total 2023-25	\$200,000	

Project Description

LAGOON MAINTENANCE

Lead Department: Public Works

Project Type: Storm, Lagoons and Shoreline

Project Summary: This project funds maintenance of the Alameda West Lagoons as a functional storm drainage detention basin while maintaining suitability for recreational use.

CIP No.: C34000

Project Description:

The Alameda West Lagoon system is composed of five lagoons that receive stormwater from a watershed approximately two square miles in size. The lagoons stretch west to east from Westline Drive to Court Street, between the Gold Coast and South Shore. Lagoon maintenance is continually required due to the aging weirs, lagoon walls, and drainage infrastructure, as well as accumulation of sediment, litter, and leaves within. Bay Farm Island also has a lagoon system running north to south which requires similar maintenance and repairs.

Planned capital projects include completion of dredging design documents for removal of sediment around the Bayview Weir, as well as completion of design work for strengthening the embankment behind the Powell Street seawall.

This project will also continue to fund dredging, water quality monitoring, water quality adjustments, pump maintenance and operation, weir and outfall maintenance and operations, interior lagoon wall repair, and trash/vegetation cleanup as the needs arise. Capital improvements and ongoing maintenance are paid for partly



Results from 2021-2023:

Design and construction of structural repairs to the Bayview Weir were completed. Weekly lagoon maintenance continued.

Future Years

Weekly maintenance and minor facility repairs will continue. Begin planning and permitting for Bayview weir replacement to ensure lagoon water levels can be maintained during storm events, as described in the Climate Action and Resiliency Plan.

Project Funding		
Fund	FY 23-24	FY 24-25
Const. Imp. Tax	\$700,000	\$200,000
ALWFOA	\$50,000	\$50,000
Total 2023-25	\$1,000,000	

Notes: (AWLFOA) Alameda West Lagoon Home Owners Association

Project Description

SHORELINE MAINTENANCE

Lead Department: Public Works

Project Type: Storm, Lagoons and Shoreline

Project Summary: This project focuses on rehabilitation and maintenance of the Alameda shoreline to prevent

CIP No.: C35000 coastal flooding and erosion.

Project Description:

Alameda has approximately 25 miles of coastline, of which 9 miles are the responsibility of the City to maintain. The remainder are maintained by the Navy, Coast Guard, East Bay Regional Park District, and private individual landholders. Materials used to stabilize shoreline include materials such as biodegradable organics, riprap, and vegetation. All of these are in need of periodic replacements and upgrades, especially after winter storms and king tides.

Work planned includes completion of design and permitting for removal of accumulated rock and sediment debris from the Bayview Weir outfall, as well as repair of the storm outfall at Encinal Avenue and East Shore Drive.



Results from 2021-2023:

Design and permitting was initiated to repair two eroded locations along the Bay Farm Island northern shoreline. The Bayview Weir outfall area was evaluated to determine options and permitting requirements for sediment removal.

Future Years

Completion of design, permitting, and construction of restoration measures for the northern shoreline of Bay Farm Island in areas it has receded. The coming years will most likely present an increasing need for maintenance/repair of this area.

Project Funding		
Fund	FY 23-24	FY 24-25
Tidelands	\$500,000	\$50,000
Total 2023-25	\$550,000	

DELIVERING ON RESILIENCY

2023-2025 CAPITAL BUDGET

Project Description

LONG-TERM ADAPTATION PLAN

Lead Department: Public Works **Project Type:** Sea Level Rise Adaptation
Project Summary: Develop a Long-term Adaptation Plan for the San Leandro Operational Landscape Unit (Bay Bridge touchdown to Oyster Bay)
CIP No.: C71400

Project Description:

This project funds the development of a Long-term Adaptation Plan in coordination with the San Leandro Bay/Oakland-Alameda Estuary Adaptation Working Group, and includes financial support for Community-based Organizations (CBOs) and a Scientific Advisor.

The Working Group is a coalition of shoreline communities working to coordinate flood and adaptation projects, and to protect and restore water and air quality, habitat and community resilience. The Working Group is organized around the San Leandro operational landscape unit (OLU) as defined in the SFEI San Francisco Bay Shoreline Adaptation Atlas, which stretches from the Bay Bridge touchdown to Oyster Bay, and includes jurisdictions, agencies and CBOs that have an interest in the OLU, as well as regional and state collaborators.

The shoreline is vulnerable to coastal inundation, liquefaction and rising groundwater and contamination as a result of rising sea levels. The plan will protect shoreline communities from expected sea level and groundwater rise, enhance transportation and recreation corridors and bay access, reduce flood exposure, create or restore marsh, upland and transitional habitat with nature-based solutions, improve air quality and reduce climate risks to shoreline communities throughout the San Leandro (OLU) and will use a decision-making process to ensure the voices of all stakeholders are heard.



Results from 2021-2023:

The City of Alameda worked with communities and organizations to establish the Working Group, and solicited proposals to develop a Long-term Adaptation Plan.

Future Years

The Long-term Adaptation Plan is being developed with two other adaptation projects: 1) Oakland-Alameda Estuary Adaptation Project; 2) Bay Farm Island Adaptation Project. These three adaptation projects are expected to take up to three years with completion expected in 2025.

Project Funding

Fund	FY 23-24
National Fish and Wildlife Foundation Grant	\$540,000
San Francisco Estuary Partnership Grant	\$300,000
Total 2023-25	\$840,000

Project Description

CITY BUILDINGS - PUBLIC WORKS

Lead Department: Public Works **Project Type:** Buildings and Facilities
Project Summary: Capital Replacement Projects for the City's buildings.
CIP No.: C41000

Project Descriptions:

The following projects for City Buildings are scheduled for Fiscal Years 2023-2025:

- **Police Department:** Electrical Upgrade
- **Fire Stations 1 & 2:** Generator Replacement
- **Maintenance Service Center:** Exterior Renovations, Parking Lot Upgrade, Car Wash Renovation
- **Garage Central:** Roof Replacement, Electrical Upgrade, Floor Restoration
- **Tillman Rec Center:** Roof Replacement, Electrical Upgrade, Heater Replacement
- **Veteran's Building:** Exterior Paint, Parking Lot Upgrade, Misc. Interior Repairs
- **O'Club:** HVAC & Electrical Upgrade, Restroom Renovation
- **Alameda Point Gym:** Roof & Siding Replacement
- **Washington Park:** Restroom Renovations
- **Leydecker Rec Center:** Roof Repairs, Interior Paint
- **Woodstock Rec Center:** Site Renovation
- **Recreation & Parks Admin Building:** Exterior Paint, Window



2021-2023 Accomplishments:

Completed projects include: APD Lobby & ADA Renovation, Littlejohn Fire Restoration, MSC Restroom & Breakroom Renovation, Animal Shelter Parking Lot Upgrade, Veteran's Façade Renovation, West End Library HVAC Upgrade, Fire Station 1 Restroom Renovation, Veteran's Lead Abatement & Restoration, Gym Floor Restoration, Leydecker Retaining Wall Installation, APD Boiler Upgrade & Godfrey Park Rec Center Renovation.

Future Years

The City's 41 buildings have years of deferred maintenance. These facility investments start to cut into that deferred maintenance, but not by much. With a more significant investment, building conditions could improve and the City would save money on having to make fewer repairs.

Project Funding

Fund	FY 23-24	FY 24-25
Facilities ISF	\$2,153,000	\$2,368,000
Total 2023-25	\$4,521,000	

DELIVERING ON RESILIENCY

2023-2025 CAPITAL BUDGET

Project Description

CITY BUILDINGS - SECURITY AND CARD READER ACCESS

Lead Department: Public Works **Project Type:** Buildings and Facilities
Project Summary: Card Reader and Security Installation project.
CIP No.: C41000

Project Descriptions:

The City of Alameda is committed to ensuring that its buildings are safe and secure, both for person and property. The Card Reader and Security Installation Project will reinforce the integrity of its facilities by installing card readers to all perimeter, office, wings and mechanical room doors. This effort, in tandem with replacing all locks, will eliminate the need for turnkeys, minimizing the opportunity for security breaches. Further, the card readers and the associated software enable the quick lockdown of facilities should such become necessary.

Also, in addition to the card readers, security cameras and panic buttons will be placed at strategic locations throughout city facilities.



Results from 2021-2023:

This is a new project.

Future Years

The City will continue to develop projects to improve safety and security.

Project Funding

Fund	FY 23-24	FY 24-25
General Fund	\$2,465,000	\$2,743,000
Total 2023-25	\$5,208,000	

Project Description

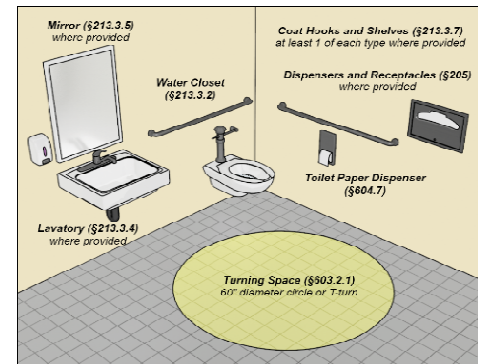
ADA TRANSITION PLAN IMPLEMENTATION

Lead Department: Public Works **Project Type:** Buildings and Facilities
Project Summary: ADA Transition Plan Implementation
CIP No.: C41000

Project Descriptions:

Public rights-of-way and facilities are required to be accessible to persons with disabilities pursuant to Section 504 of the Rehabilitation Act of 1973 and Title II of the Americans with Disabilities Act of 1990. The laws, in tandem with each other, work to ensure that persons with disabilities are not excluded from City services, programs, or activities. To this end, and to ensure an inclusionary community, the City of Alameda recently completed an ADA Self-Assessment and Transition Plan project.

The ADA Transition Plan Implementation Project seeks to resolve the ADA deficiencies identified through the Self-Assessment, the outcome of which will be a more accessible community.



Results from 2021-2023:

The City completed an ADA Self-Assessment and Transition

Future Years

The Transition Plan is a living document designed to evolve as barriers are resolved, and to capture new barriers as they are identified. Additionally, the Transition Plan serves as a tool regularly update staff and the public on progress made.

Project Funding		
Fund	FY 23-24	FY 24-25
General Fund	\$625,000	\$625,000
Total 2023-25	\$1,250,000	

Project Description

CIVIC CENTER GARAGE IMPROVEMENTS

Lead Department: Public Works

Project Type: Buildings and Facilities

Project Summary: Upgrades to the Civic Center Parking Structure

CIP No.: C44000

Project Descriptions:

The Civic Center Parking Garage is in need of improvements. The following upgrades are planned to improve safety, security and attractiveness of the parking facility:

1. Install access control doors at vehicle entry, pedestrian gates at ingress/egress points, and decorative style paneling at open air areas to allow facility to be closed at night.
2. Upgrade outdated Parking Guidance System.
3. Replace pay stations and upgrade lighting fixtures to LED.
4. Paint all concrete walls including stairwells with anti-graffiti paint
5. Based on occupancy data, consider dedicating 5th floor and up for 'official vehicle' parking with motorized gates/access control.



Results from 2021-2023:

This is a new project.

Future Years

Ongoing operational needs and capital investment are expected to be funded by the Parking Fund. Increasing the usability and parking occupancy of the garage will increase revenue to be invested in the

Project Funding		
Fund	FY 23-24	FY 24-25
General Fund	\$1,000,000	
Total 2023-25	\$1,000,000	

Project Description

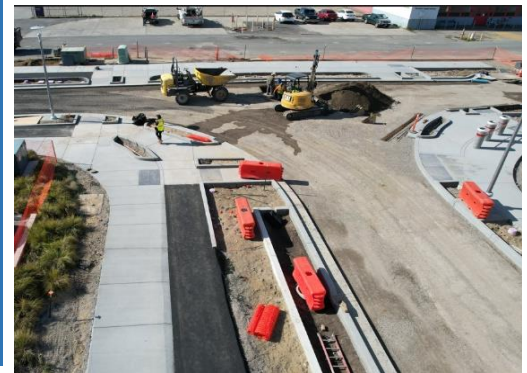
ALAMEDA POINT ADAPTIVE REUSE AREA BACKBONE IMPROVEMENTS

Lead Department: Community Development **Project Type:** Buildings and Facilities
Project Summary: Replace the backbone infrastructure in Alameda Point's Adaptive Reuse Area per the approved Master Infrastructure Plan.
CIP No.: C75000

Project Description:

The Alameda Point Master Infrastructure Plan provides for the phased replacement of all of the Navy's outdated and substandard utility infrastructure, including water, sewer, storm drain, electrical, gas, telecommunications, and surface street improvements. To address the specific infrastructure requirements needed to preserve the NAS Alameda Historic District in the Reuse Area, the City is selling individual buildings within the Reuse Area and with this revenue will overseeing the phased implementation of infrastructure renewal in the Reuse Area.

This new appropriation is for design costs related to Phase 2 remaining utilities and roadway improvements and Phase 3 all backbone improvements. City Council previously appropriated civil engineering design costs. This additional \$2 million is for costs related to outside utility (PGE, telecommunications and EBMUD) and Alameda Municipal Power design as well as cost for environmental and biologic support services during design.



Results from 2021-2023:

Design for Phase 1 all backbone improvements and Phase 2 water only improvements were finished and the project successfully bid. Construction is underway and expected to be complete in 2024.

Future Years

The City will complete design of Phase 2 and Phase 3 backbone infrastructure improvements for Alameda Point's Adaptive Reuse Area. When construction dollars are secured, they will be appropriated and the projects built.

Project Funding		
Fund	FY 23-24	FY 24-25
Alameda Point	\$2,000,000	
Total 2023-25	\$2,000,000	

Project Description

ALAMEDA POINT BIG WHITES LEAD ABATEMENT

Lead Department: Community Development **Project Type:** Buildings and Facilities
Project Summary: This project performs lead abatement for the "Big Whites" housing at Alameda Point
CIP No.: C75200

Project Description:

The Big Whites are formerly Navy senior officer housing at Alameda Point that are owned by the City and currently leased at market rate.

This project includes annual "follow-up" assessments, testing, stabilization, relocation benefits to stabilize existing painted surfaces containing lead-based paint.

In addition, the project will:

- Repair or replace decayed wood trim, garage door components and window components
- Replace severely deteriorated and missing sections of gutters and downspouts
- Install new downspout extensions and splash blocks at all downspouts



Results from 2021-2023:

The city completed the initial round of stabilization of painted surfaces.

Future Years

The City will continue to invest in city-owned buildings and infrastructure at Alameda Point.

Project Funding		
Fund	FY 23-24	FY 24-25
Alameda Point	\$1,000,000	\$1,000,000
Total 2023-25	\$2,000,000	

Project Description

ALAMEDA POINT FACILITIES IMPROVEMENTS

Lead Department: Community Development **Project Type:** Buildings and Facilities
Project Summary: This project performs repairs to City-owned facilities at Alameda Point
CIP No.: C75200

Project Description:

Minor capital repairs are needed on City-owned property at Alameda Point. These repairs include replacing the roof of Building 24 and replacing the fire protection water pumps for the hangars located on Monarch Street.

Building 24 is a 63,000 SF hanger located at 2301 Monarch Street, Alameda Point. According to a recent inspection, the roof of the building needs to be replaced. Removal of remaining US Navy equipment from the roof is necessary before replacement of the roof can occur.



Results from 2021-2023:

This is a new capital project

Future Years

The City will continue to invest in city-owned buildings and infrastructure at Alameda Point.

Project Funding		
Fund	FY 23-24	FY 24-25
Alameda Point	\$3,200,000	
Total 2023-25	\$3,200,000	

Project Description

PARK PATHWAY REPAIR AND REPLACEMENT

Lead Department: Recreation and Parks **Project Type:** Parks
Project Summary: Repair and replace deteriorated pathways in Alameda's parks for improved safety and accessibility
CIP No.: C15000

Project Description:

Alameda has many miles of asphalt pathways throughout its 26 parks and the City is implementing a regular program to repair and replace deteriorated pathways for improved safety and accessibility. An annual pathway replacement program for regular repair reduces long-term costs involved with deferred maintenance.



Results from 2021-2023:

Path repair and maintenance was completed at the following parks: Washington, Chochenyo, Lincoln, Harrington and Franklin.

Future Years

This project is expected to continue in future years to improve all park pathways. The long-term program includes completing an inventory of pathways, identify the status of all pathways and implement a 10-year replacement master plan to keep park pathways in a state of good repair.

Project Funding		
Fund	FY 23-24	FY 24-25
General Fund	\$300,000	\$300,000
TDA Grant	\$124,451	
Total 2023-25	\$724,451	

Project Description

PARK MAINTENANCE IMPROVEMENTS

Lead Department: Recreation and Parks

Project Type: Parks

Project Summary: Capital maintenance and improvement projects to ensure safe play areas, athletic facilities, and amenities for all parks

CIP No.: C51000

Project Description:

The City of Alameda has 26 parks serving City residents and visitors with millions of visits each year. This project provides much needed capital investment to address significant deferred maintenance and provide safe, accessible and high quality Alameda parks. Types of projects include:

- 1) Addressing long neglected deferred maintenance issues in parks such as fencing, tables, and concrete repair work.
- 2) Adding amenities as usage increases such as bicycle racks, shade structures, tree planting
- 3) Lawn conversion to drought tolerant plantings. Installation of scoreboards and upgrade to LED lighting at Estuary.
- 4) Other projects such as resurfacing tennis courts, adding pickleball courts, renovating bocce ball courts, and expanding the skate park.
- 5) Installation of new lawn on City owned park land (Bohol Circle Immigrant Park).



Results from 2021-2023:

Project included the following: replacement of tennis court lighting with LED; upgrade of irrigation clocks for water savings; installation of Krusi Picnic Area and renovation of Harrison center stage; installation of park signs. boat ramp repairs and replacement.

Future Years

Future park maintenance improvement projects may include adding and replacing athletic fields.

Project Funding		
Fund	FY 23-24	FY 24-25
General Fund	\$335,000	\$325,000
Cell Tower	\$54,000	\$55,000
Total 2023-25	\$769,000	

Project Description

PLAYGROUND REPLACEMENT

Lead Department: Recreation and Parks **Project Type:** Parks
Project Summary: Annual playground replacement for all parks
CIP No.: C52000

Project Description:

The City of Alameda has 26 parks serving residents and visitors. This project replaces one park playground each year based on facility age and location equity. The design for each playground is unique and the local neighborhood community is involved with the design and layout. The playground safety surfaces are changed from existing wood fiber to poured-in-place rubber surfacing whenever financially feasible which improves playground safety and accessibility.



Results from 2021-2023:

The playground at Lincoln Park was replaced with a new structure featuring a jungle theme. This playground was scheduled for replacement and pushed up on list due to a tree falling and damaging the prior structure.

Future Years

This is an ongoing project. Future replacements are planned to include playgrounds at Tillman and Krusi park.

Project Funding		
Fund	FY 23-24	FY 24-25
General Fund	\$285,000	\$325,000
Total 2023-25	\$610,000	

Project Description

DE-PAVE PARK

Lead Department: Recreation and Parks **Project Type:** Parks
Project Summary: Design improvements for De-Pave park on Alameda Point
CIP No.: C55200

Project Description:

De-Pave Park is a 12-acre ecological park in which all existing concrete from the former Naval Base airfield runway system will be removed to create tidal wetlands and wildlife habitat. De-Pave Park is designed to inundate over time with sea level rise and create a tidal ecology system, which has notable carbon sequestration benefits.

The City of Alameda (City) was awarded \$800,000 from the San Francisco Bay Restoration Authority (SFBRA) Measure AA grant for project planning. The scope of the planning work includes a Master Plan process with broad, inclusive community outreach using the De-Pave Park Vision Plan as a starting point and development of 30% design documents.



Results from 2021-2023:

A vision study was completed for the park, and the City was awarded a grant for the design.

Future Years

Final design and construction of the park is expected to be funded and completed in future years.

Project Funding		
Fund	FY 23-24	FY 24-25
General Fund	\$50,000	
Total 2023-25	\$50,000	

Note: this is the local match for an \$800,000 grant previously appropriated for this project.

Project Description

ESTUARY PARK PHASE 2

Lead Department: Recreation and Parks **Project Type:** Parks
Project Summary: Construct the second phase of Estuary Park
CIP No.: C52500

Project Description:

Estuary Park is an eight-acre public park located at 201 Mosley Avenue. Phase 1 was constructed and opened to the public in 2018. Phase 2 encompasses four acres on the eastern side of the park and will incorporate a new restroom, picnic areas, an inclusive playground, basketball courts (including Bankshot, an inclusive basketball system), pickleball courts and a dog park.

Park access will include a new parking lot with EV charging that will be coordinated with recent improvements on Mitchell Road and Mosley Avenue. The park serves the entire community and nearby residents at Alameda Landing, Admiral's Cove and Alameda Point.

The City was awarded grant funding for Phase 2 through the federal Land and Water Conservation Fund.



Results from 2021-2023:

The design contract was awarded to update the previous design to meet current standards and the terms of the grant funding.

Future Years

Construction is expected to be completed in 2025.

Project Funding		
Fund	FY 23-24	FY 24-25
Park DIF	\$2,500,000	
Grant	\$2,500,000	
Total 2023-25	\$5,000,000	

Project Description

CITY AQUATIC CENTER

Lead Department: Recreation and Parks **Project Type:** Parks
Project Summary: Develop a new City-owned aquatic center on the west end of Sweeney Park
CIP No.: C55400

Project Description:

A City Aquatic Center will provide critical additional pool space to meet the increasing and unmet community needs for competitive and recreational aquatic programs.

Construction of this facility is estimated to cost \$30 million based upon a City Council approved conceptual design with a 30-meter competition pool, a recreational pool, associated building with locker rooms, office space, restrooms, and community room as well as the associated parking lot and amenities to support the Center. The City Aquatic Center will be located at the west end of Sweeney Park.



Results from 2021-2023:

The City completed a conceptual design for a City Aquatic Center and developed options to fund aquatic facilities in Alameda, including the rebuild of the Emma Hood Swim Center at Alameda High School and construction of a City Aquatic Center on a City-owned site.

Future Years

Final design and construction is expected to be funded and completed in future years.

Project Funding		
Fund	FY 23-24	FY 24-25
General Fund	\$15,000,000	
Total 2023-25	\$15,000,000	

Note: additional funding is anticipated to be provided through a financing and lease agreement.

Project Description

MARINA VILLAGE PARK IMPROVEMENTS

Lead Department: Public Works

Project Type: Parks

Project Summary: Implement landscaping, lighting and pathway improvement at Marina Village Park

CIP No.: C55600

Project Description:

Marina Village Shoreline Park is located on the north end of Alameda on the estuary, between Marina Village Parkway and Triumph Drive. This project will replace the existing lawn with new drought-tolerant landscaping. It will also upgrade the irrigation and lighting systems and make spot repairs to pathways to improve safety and access.



Results from 2021-2023:

The project was re-designed in 2023 to incorporate changes to grading and irrigation systems.

Future Years

Construction is expected to be complete in 2024.

Project Funding		
Fund	FY 23-24	FY 24-25
Fund 282 - MV AD 89-1	\$750,000	
Total 2023-25	\$750,000	

Note: additional funding for this project was included in previous capital budgets

Project Description

STREET SAFETY

Lead Department: Public Works **Project Type:** Transportation System Enhancements
Project Summary: Implement traffic calming measures at high priority corridors and intersections to improve
CIP No.: C61000 safety for all users.

Project Description:

Alameda’s Vision Zero Action Plan includes measurable actions to increase street safety with the goal of eliminating traffic fatalities and severe injuries. The City uses crash data analysis, best practices and community input to identify the policies and actions that will be most effective at reducing injuries and fatalities in Alameda.

This project will fund projects to increase street safety for vulnerable users, including daylighting at intersections to improve visibility. Other safety measures include high visibility crosswalks and other intersection striping, and infrastructure such as curb bulb-outs and pedestrian refuge islands.

The project will implement daylighting on the Tier 3 High Injury Corridors. In addition, the project funds the rapid response program to address locations where traffic fatalities have occurred on City streets.



Results from 2021-2023:

The City has implemented daylighting to increase visibility at intersections on Tier 1 and Tier 2 high injury corridors.

Future Years

With adoption of the Vision Zero Policy and further data analysis, the City will continue to use a data-driven process to identify priority locations for improving street safety.

Project Funding		
Fund	FY 23-24	FY 24-25
Gas Tax	\$50,000	\$50,000
DIF- Transp.	\$200,000	\$200,000
Total 2023-25	\$500,000	

Project Description

SAFE ROUTES TO SCHOOL

Lead Department: Public Works **Project Type:** Transportation System Enhancements
Project Summary: Implement street safety improvements near school sites
CIP No.: C62000

Project Description:

The City of Alameda participates in the Alameda County Safe Routes to School program. This program includes assessments of school sites and recommend changes to improve safety for students walking and biking to school. To date, there have been assessments completed for the following schools in Alameda:

Academy of Alameda
 Earhart Elementary School
 Edison Elementary
 Franklin Elementary
 Love Elementary
 Maya Lin
 Nea Community Learning Center
 Wood Middle

This project provides funding to design and implement physical improvements for safety near school sites, using the school safety assessment as a starting point.



Results from 2021-2023:

The City prepared cost estimates and layouts for improvements at school sites with existing assessments. Detailed designs are expected to be completed in 2023

Future Years

The city will continue to participate in the Alameda County Safe Routes to School program. School sites will be prioritized for safety improvements to make students feel comfortable walking and biking to school.

Project Funding		
Fund	FY 23-24	FY 24-25
Measure BB - LSR	\$300,000	\$300,000
Total FY21-23	\$600,000	

Project Description

TRANSIT STOP ENHANCEMENTS

Lead Department: Public Works

Project Type: Transportation System Enhancements

Project Summary: Implement improvements at transit stops to increase comfort and amenities.

CIP No.: C61000

Project Description:

The City of Alameda has a robust network of transit service, however, many bus stops do not have seating or shade available for passengers. The city has made upgrades to transit stops as part of corridor improvement projects, and this project would invest in bus stops in areas outside of corridor improvement projects.

Improvements may include installation of benches and shelters, sidewalk reconstruction, red curb painting, bus stop relocations or other bus stop amenities. Improvements are coordinated with AC Transit and other stakeholders.



Results from 2021-2023:

This is a new project

Future Years

The City will continue to support transit use and service in Alameda.

Project Funding

Fund	FY 23-24	FY 24-25
Meas BB Paratransit	\$200,000	\$200,000
Total 2023-25	\$400,000	

Project Description

ACTIVE TRANSPORTATION PLAN IMPLEMENTATION

Lead Department: Transportation Planning **Project Type:** Transportation System Enhancements
Project Summary: Implement bicycle and pedestrian improvements developed through the Active
CIP No.: C63000 Transportation Plan

Project Description:

The City of Alameda is dedicated to providing safe, comfortable and accessible ways for people of all ages and all abilities to walk and bicycle throughout the city. The City's Active Transportation Plan (ATP) outlines a 2030 Infrastructure Plan and a 2030 Low Stress Backbone Network.

To expand on the planned corridor improvement projects, this project will begin to design and implement the ATP projects, including conversion of Slow Streets to Neighborhood Greenways. In addition, the City will develop designs and pursue grand funding for priority projects identified in the ATP such as a separated bikeway on Stargell Ave.



Results from 2021-2023:

The Active Transportation Plan was adopted by City Council in 2022.

Future Years

The City will continue to develop projects to improve safety and connectivity for people biking and walking.

Project Funding		
Fund	FY 23-24	FY 24-25
Meas. BB LSR		\$500,000
Total 2021-23	\$500,000	

Note: additional funding for this project was included in previous capital budgets

DELIVERING ON RESILIENCY

2023-2025 CAPITAL BUDGET

Project Description

CENTRAL AVENUE IMPROVEMENTS

Lead Department: Public Works

Project Type: Transportation System Enhancements

Project Summary: Construct improvements on Central Avenue between Main Street/Pacific Avenue and Sherman Street/Encinal Avenue.
CIP No.: C65600

Project Description:

The Central Avenue project, which totals 1.7 miles and is partially on State Route 61, improves safety and mobility for all street users including people who walk, bicycle, take the bus or drive.

The project reduces lanes from four to three, and includes a center turn lane, a two-way separated bikeway adjacent to schools and on the SF Bay Trail, standard striped bike lanes in the Gold Coast area between Eighth Street and Sherman Street, roundabouts at Central/Main Pacific, Central/Third/Taylor and Central/Fourth/Ballena, curb extensions, pedestrian refuge islands, traffic signal modifications, flashing beacons by Encinal School at Lincoln Avenue, new crosswalks, enhanced bus stops, street trees and stormwater gardens. A fourth roundabout at Central/Sherman/Encinal is unfunded.

The Central Avenue Project is the result of a ten-year collaborative effort directed by the City Council as shown in the project webpage www.alamedaca.gov/Central



Results from 2021-2023:

In April 2021, the City Council approved the final concept for the project. The consultant team prepared documents needed for environmental clearance that led to the final design and construction documents. In February 2023, the City Council authorized the City Manager to execute a Cooperative Agreement with Caltrans to complete construction.

Future Years

Project construction is anticipated to begin in late-2023.

Project Funding	
<i>Previously Approved</i>	
Fund	
DIF Transp.	\$150,000
General Fund	\$748,000
Measure B/BB	\$2,783,000
Grants (CBTP, ATP, CMAQ, STP)	\$11,011,000
Veh. Reg. Fee	\$320,000
Subtotal	\$15,012,000

Current Budget		
Fund	FY 23-24	FY 24-25
OBAG3 Federal	\$2,325,000	\$0
Water Quality/EPA	\$1,500,000	\$0
Measure BB	\$2,500,000	\$0
Total 2023-25	\$6,325,000	

CLEMENT AVENUE SAFETY IMPROVEMENTS

Lead Department: Public Works **Project Type:** Transportation System Enhancements
Project Summary: Construction of safety improvements on Clement Avenue between Grand Street and Broadway.
CIP No.: C65200

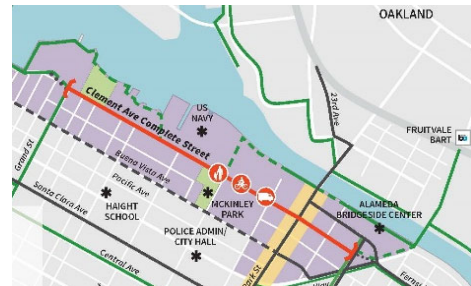
Project Description:

Excessive speeds, challenging crossings for pedestrians and a lack of bicycle facilities cause safety concerns along this segment of Clement Avenue.

The project constructs a portion of the Cross Alameda Trail while ensuring that this designated truck route is in a state of good repair. Clement Avenue is the main thoroughfare in the Northern Waterfront Priority Development Area and is a gateway to Oakland and beyond. This Clement Avenue project is 1.2 miles in length, and includes a two-way separated bikeway, curb extensions, traffic signal modifications, sidewalk/curb ramp improvements, railroad track removal, resurfacing and stormwater enhancements.

Total project cost is expected to be \$6,727,000. The outreach, concept approval and preliminary engineering totaled \$641,000. The design costs \$760,000. The construction is expected to cost \$5,146,000.

Project webpage: <https://www.alamedaca.gov/Clement>



Results from 2020-2023:

In July 2020, the City Council approved the final concept for the project. Environmental clearance was completed in 2021 and

Future Years

Construction is expected to begin in mid-2023.

Project Funding	
Previously Approved	
DIF Transp.	\$74,000
Measures B/BB LSR	\$935,000
Measure B Bike/Ped	\$200,000
Federal Grant	\$5,018,000
Subtotal	\$6,227,000

Current Budget		
Fund	FY 23-24	FY 24-25
Measure BB LSR	\$500,000	\$0
Total 2023-25	\$500,000	

Project Description

CLEMENT AVE AND TILDEN WAY IMPROVEMENT

Lead Department: Public Works

Type: Transportation System Enhancements

Project Summary: Extension of the Cross Alameda Trail between Broadway and the Miller-Sweeney Bridge and safety improvements in the corridor.

CIP No.: C65300

Project Description:

The Clement Avenue/Tilden Way project uses the abandoned railroad right-of-way at Clement Avenue and Tilden Way to extend the Cross Alameda Trail between Broadway and the Miller-Sweeney/Fruitvale Bridge and to improve the truck and bus routes in this area. The project includes a bikeway, walkway, road diet, westbound Clement Avenue extension, open space, stormwater gardens, bus stop improvements, a dog park and a roundabout at the Blanding/Tilden/Fernside intersection.

Construction is scheduled to start in 2024.

Project webpage: www.alamedaca.gov/ClementTilden



Results from 2020-2023:

In March 2023, the City Council approved the design concept for the project.

Future Years:

Construction is expected to be completed in 2025.

Project Funding	
<i>Previously Approved</i>	
Measure BB Grant	\$4,040,000
DIF Transp.	\$732,000
Cont. Imp. Tax	\$222,500
Gas Tax	\$222,500
Subtotal	\$5,217,000

Current Budget		
Fund	FY 23-24	FY 24-25
Measure B Grant	\$4,355,000	\$0
Measure BB LSR	\$826,000	\$0
DIF Transp.	\$1,300,000	\$0
Total 2023-25	\$6,481,000	

DELIVERING ON RESILIENCY

2023-2025 CAPITAL BUDGET

Project Description

LINCOLN/MARSHALL/PACIFIC CORRIDOR IMPROVEMENTS

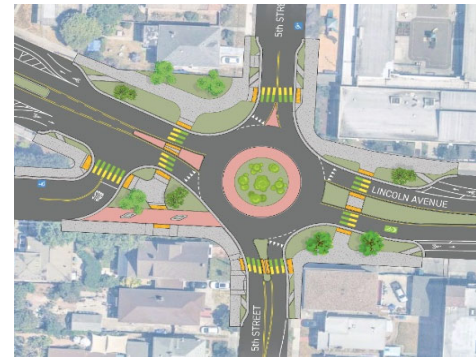
Lead Department: Public Works **Project Type:** Transportation System Enhancements
Project Summary: Lincoln Avenue/Marshall Way/Pacific Avenue corridor between Alameda Point at Main Street/Central Avenue/Pacific Avenue and Broadway in the east end.
CIP No.: C65700

Project Description:

The Lincoln/Marshall/Pacific corridor is over three miles long, serves multiple destinations including schools, bus stops, commercial districts and parks, is a Tier 1 high-injury corridor and has high levels of social vulnerability.

The concept includes a road diet, bike lanes, a roundabout at Lincoln Avenue/Fifth Street/Marshall Way, flashing beacons, pedestrian/bicycle signals, modernized traffic signals, crosswalk improvements, school frontage improvements, stormwater gardens, street trees, disabled parking and loading zones, improved lighting and bus stop enhancements.

The project webpage - www.alamedaca.gov/LincolnMarshallPacific



Results from 2021-2023:

In 2022, the City staff/consultant team evaluated the current uses, intersection controls and crash data, and engaged with community members to develop the design concept. In February 2023, the Transportation Commission endorsed the design concept. In April 2023, the City Council endorsed the

Future Years

Immediate actions at Lincoln/Walnut will be constructed in 2023. Other corridor improvements will be implemented over time as the street is resurfaced and with grant funding. Total project cost is estimated at \$27 million.

Project Funding	
<i>Previously Approved</i>	
Measure BB LSR	\$200,000
Total 2021-23	\$200,000

Current Budget		
Fund	FY 23-24	FY 24-25
Measure BB LSR	\$250,000	\$250,000
DIF Transp.	\$250,000	\$250,000
ACTC Grant	\$567,000	
Total 2023-25	\$1,567,000	