



April 19, 2023

TO: PROSPECTIVE BIDDERS

**CITY OF ALAMEDA
HARRINGTON FIELD RESTROOM FIRE DAMAGE REPAIR/RESTORATION
No. P.W. 03-23-05
ADDENDUM NO. 1**

Addendum No. 1 is hereby issued to make the following revision to the plans and specifications. Please note deletions are shown in ~~strikeout~~, additions are shown in **bold italics**:

- 1. REFERENCE SECTION: PROJECT MANUAL COVER PAGE

Proposal Due date Change:

~~Sealed proposals are due at 2:00 P.M., April 25, 2023~~
Sealed proposals are due at 2:00 P.M., April 27, 2023

- 2. REFERENCE SECTION: 1 NOTICE INVITING BIDS

Proposal Due date Change:

The City of Alameda (“City”) will accept sealed bids for its Harrington Field public restroom fire damage repair/restoration Project (“Project”), by or before April ~~25~~ ***27***, 2023, 2:00 p.m

- 3. REFERENCE SECTION: 5-1 BID SCHEDULE FOR HARRINGTON FIELD RESTROOM FIRE DAMAGE REPAIR/RESTORATION (ATTACHMENT A)

New Bid Schedule

Bid Item	Description	Unit of Measure	Quantity	Unit Price	Total Price
<i>1</i>	<i>Men’s Restroom and Utility Room and all exterior doors</i>	<i>Lump Sum</i>	<i>1</i>		
<i>Alternate #1</i>	<i>Women’s Restroom – Partitions and Paint</i>	<i>Lump Sum</i>	<i>1</i>		
<i>Alternate #2</i>	<i>Prep and paint complete exterior – two color</i>	<i>Lump Sum</i>	<i>1</i>		

4. REFERENCE SECTION: 17 TEMPORARY FACILITIES

17-2 SANITARY FACILITIES

Provide and maintain sanitary facilities for employees and subcontractor's employees that comply with the regulations of the local and State Departments of Health.

Addendum 1: contractor shall keep at least one restroom in service, operational, and accessible to the public at all times. If contractor cannot keep at least one restroom in service, contractor shall furnish and maintain temporary restroom facilities. Temporary facilities must be ADA accessible and have hand washing facilities. Cost for temporary restroom facilities should be included in bid items #1 and Alternate #1.

5. REFERENCE SECTION: 18 SUBMITTALS

18-4 MATERIAL SUBMITTALS

The Contractor shall provide all material submittals to the Engineer for his review through the web-based project document platform OR other method agreed to be the Engineer. The Engineer will review all materials submittals and either approves or returns for revisions within five (5) working days, unless he notifies the Contractor of concerns that require additional time to resolve.

Addendum 1: Material submittals shall include manufacturer's product data and specifications for:

- *Light fixtures*
- *Restroom partitions*
- *Plumbing fixtures and materials if replacements do match existing*
- *Exterior doors, closers, and hardware*
- *Replacement wall panels (or work plan for proposed repairs)*
- *Paints and coatings*

6. UPDATES TO TECHNICAL SPECIFICATIONS (ATTACHMENT B)

Changes to the Technical Specifications are included in Attachment B

7. CITY RESPONSES TO CONTRACTOR BID QUESTIONS (ATTACHMENT C)

The City's response to all bid questions received through 04/19/2023 are included in Attachment C.

8. ELECTRICAL FIXTURE SPECIFICATIONS (ATTACHMENT D)

Electrical fixtures for the restrooms and utility closets are included in Attachment D. Contractor may propose alternate fixtures that are equal to or better than specified fixtures.

APPROVED: Zach Petit

Date: April 19, 2023

Receipt is hereby acknowledged of Addendum No. 1, HARRINGTON FIELD RESTROOM FIRE DAMAGE REPAIR/RESTORATION, No. P.W. 03-23-05

Company Name / Contractor

Date: _____

By: _____

NOTE: THIS COMPLETE ADDENDUM, SIGNED AND DATED MUST BE RETURNED WITH YOUR BID.

Attachments:

- A) Updated Bid Schedule – to be completed and returned with proposal
- B) Updates to Technical Specifications
- C) Addendum No. 1 Harrington Field Bid Questions
- D) Flood Light Sample Specs and LED Light for Utility Closet

ATTACHMENT A

Updated Bid Schedule – to be completed and returned with proposal

BIDDER _____

**5-1 BID SCHEDULE FOR HARRINGTON FIELD RESTROOM FIRE DAMAGE
REPAIR/RESTORATION**

TO: CITY COUNCIL, CITY OF ALAMEDA, CALIFORNIA

The undersigned Bidder declares that Bidder has carefully examined the Project Manual, and is satisfied as to the field conditions the Bidder will encounter. The Bidder proposes to furnish all materials, labor and equipment and to do all Work required to complete the Work in accordance with the Project Manual, for the prices set forth in the following schedule (including all applicable taxes):

Bid Item	Description	Unit of Measure	Quantity	Unit Price	Total Price
<i>1</i>	<i>Men's Restroom and Utility Room and all exterior doors</i>	<i>Lump Sum</i>	<i>1</i>		
<i>Alternate #1</i>	<i>Women's Restroom – Partitions and Paint</i>	<i>Lump Sum</i>	<i>1</i>		
<i>Alternate #2</i>	<i>Prep and paint complete exterior – two color</i>	<i>Lump Sum</i>	<i>1</i>		

Entire Work. Bids are required for the entire Work, including the alternative bid items if any. The amount of the bid for the purposes of the award will be the total of the amount of all the base bid items. The City will determine which additional alternate(s), if any, will be awarded. All items are based on an “in place” condition.

Item price and total. The Bidder shall set forth for each unit basis item of Work an item price and a total for the item, and for each lump sum item a total for the item, all in clearly legible figures in the respective spaces provided for this purpose. In the case of unit basis items, the amount set forth under the “total” column shall be the extension of the item price bid on the basis of the estimated quantity for the item.

Discrepancies. In the case of discrepancy between the item price and the total set forth for a unit basis item, the item price shall prevail. However, if the amount set forth as an item price is ambiguous, unintelligible or uncertain for any cause, or is omitted, or is the same amount as the entry in the “total” column, then the amount set forth in the “total” column for the item shall prevail and shall be divided by the estimated quantity for the item and the price thus obtained shall be the item price.

Quantities. The foregoing quantities are approximate only, being given as a basis for the comparison of bids. The City does not, expressly or by implication, agree that the actual amount of Work will correspond with the quantities, but reserves the right to increase or decrease the amount of any class or portion of the Work, or to omit any portion(s) (this includes complete base bid items) of the Work, as the Engineer deems necessary or advisable, at the contract price. Price negotiations on the contract prices are optional if the actual amount of Work is different from the above estimates by 25% or greater.

ATTACHMENT B

UPDATES TO TECHNICAL SPECIFICATIONS

**TECHNICAL SPECIFICATIONS
WITH ADDENDUM 1 CHANGES**



Figure 1 Harrington Restroom Exterior

General view of men's restroom exterior (Bid Item #1)

Addendum 1: Bid Item #1 includes all work inside of the Men's restroom and Utility closet as called out and described in the following pages. All ancillary/support work to complete this scope should be included the lump sum price for this bid item. This is included but not limited to: site security, pedestrian control, disposal of all demolition and construction waste and materials, housekeeping, and project administration (submittals, shop drawings, etc.)

Addendum 1: Paint Complete Exterior (Bid Item Alternate #2)

Bid Item Alternate #2 includes re-painting of all exterior surfaces in two colors, exterior grade paint. Work shall include cleaning, prep, and priming of all surfaces in accordance with manufactures specifications. The City uses Sherwin Williams Paints. Body color: Bunglehouse Blue 0048. Trim Color: Icicle 6238

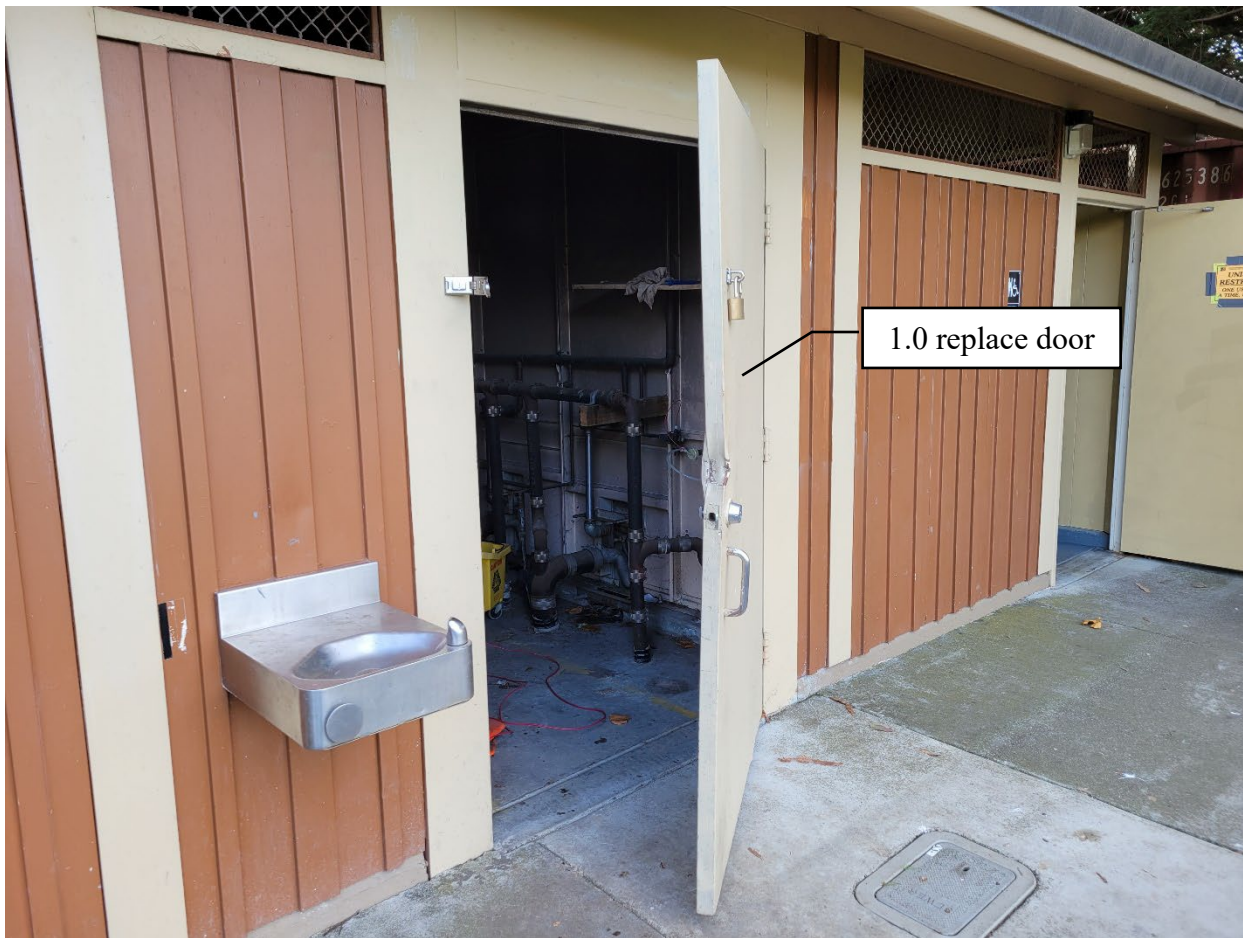


Figure 2 Harrington Utility Closet Door

1. Scope – Exterior (Bid Item #1)

- 1.1. Replace Metal Doors. **Addendum 1: all three doors to be replaced in-kind**
- 1.2. Door and frame to be replaced in-kind
- 1.3. City to provide details of lock hardware **Addendum 1: Schlage ND70PD, RHO lever, 626 finish: ND70PD RHO 626**
- 1.4. Paint to match existing
- 1.5. **Addendum 1: Furnish and install new door closer for restroom doors suitable for installed door material and weight.**
- 1.6. **Addendum 1: Clean smoke/fire residue from back wall and soffit and prep/prime/paint to match existing.**
- 1.7. **Addendum 1: all paint, primer and coatings for both exterior and interior surfaces shall be exterior grade and compatible with the substrate being painted. Apply the number of coats specified by the**

manufacturer for this application. All surfaces shall be cleaned/prepped and primed in accordance with manufactures instructions.

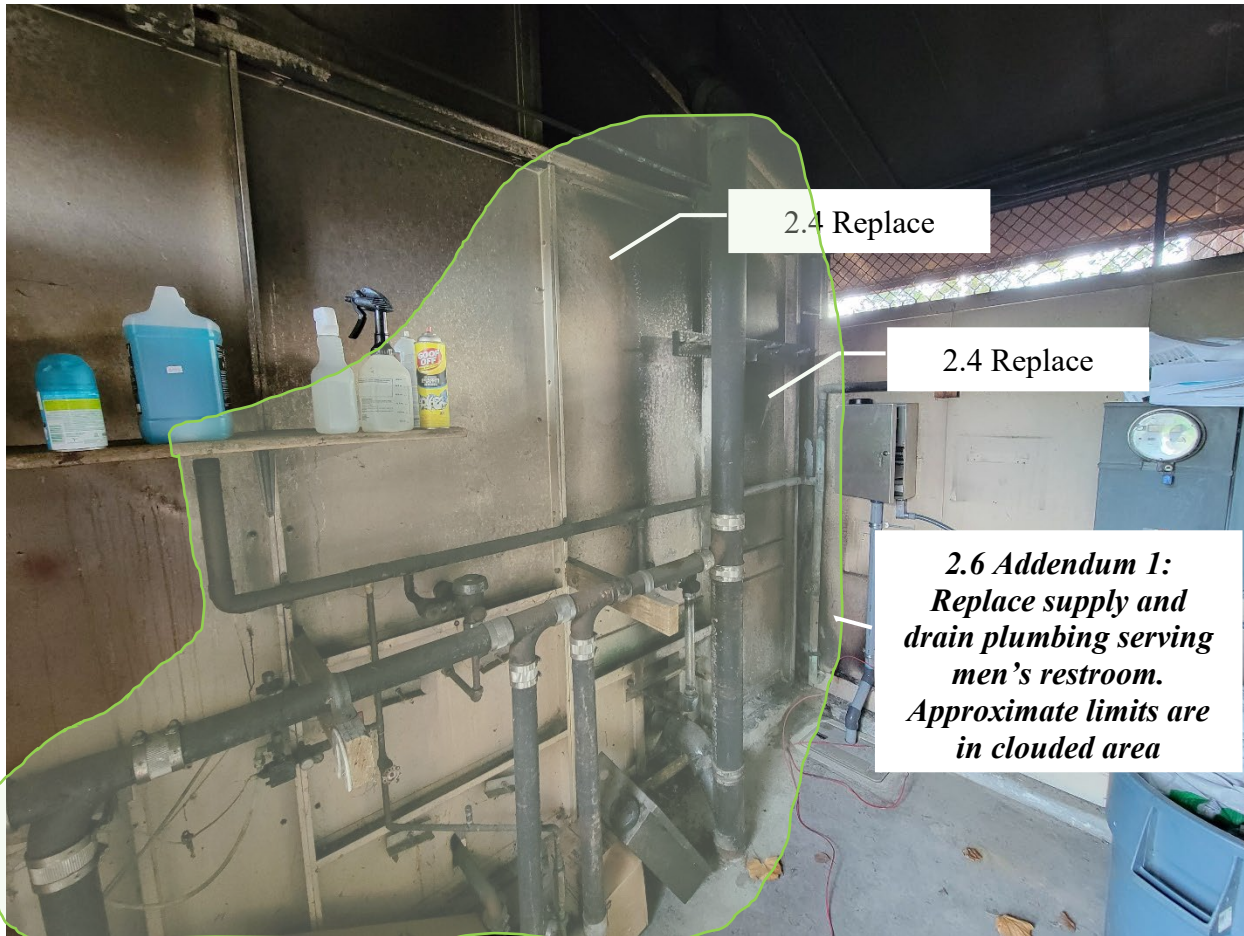


Figure 3 Harrington Utility Closet 1

2. Scope – Utility Closet (Bid Item #1)

- 2.1. Utility Closet Repairs – Men's Bathroom Side
- 2.2. Remove all fire damaged fixtures, hardware, and equipment.
- 2.3. Clean all walls, ceilings, and surfaces to remove dirt and fire/smoke damage.
- 2.4. Remove and replace damaged steel wall panels (assume two full panels and two filler panels between wall and ceiling). Replacement panels to match existing construction. Record drawings indicate the restroom structure was manufactured by Super Secur Mfg. Co which appears to be a division of Acorn Engineering. Contractor can choose to:
 - 2.4.1. Source replacement panels from the original manufacture that match existing panels. Contractor shall submit product information/shop drawings demonstrating that the replacement panels are equivalent to existing panels.
 - 2.4.2. Manufacture replacement panels. If replacement panels are manufactured, they shall match existing panel dimension, and shape, and material (18 gauge galvanized steel). Contractor shall submit shop drawings for replacement panels demonstrating that new panels will meet or exceed specifications and quality of existing panels.

2.4.3. Repair existing panels. Contractor shall submit a work plan detailing repair methods (straightening, patching, or other) that demonstrates repair work will bring panel condition back to original new construction or better.

2.5. Paint all walls and ceiling to match existing color

2.6. Addendum 1: Plumbing work: replace all piping, valves and fixtures that serve the men's restroom with new materials that are equal to or better than existing and meet current code requirements. Approximate limits or replacement are outlined in Figure 3. If it is determined through the course of the work that replacement of additional plumbing is required due to fire damage or code requirements, it will be compensated as extra work in accordance with the General Requirements.

2.7. Addendum 1: Electrical Work: remove and replace all fixtures, boxes, conduits, and wires serving the men's restroom lighting, women's restroom lighting, and utility closet lighting as indicated in site pictures. It is not anticipated that any work, repairs, or modifications will be required on existing load/distribution panel or service entrance, or to the existing irrigation controller. If replacement due to damage or code requirements is required for electrical facilities not called out in this scope, it will be compensated as extra work in accordance with the General Requirements.

Fixtures, wiring, conduit, boxes etc. shall be replaced with new materials that are equal to or better than existing materials and meet current code requirements.



Figure 4 Harrington Utility Closet 2



**2.7 Addendum 1: Replace
light fixture, conduits,
wiring and hoxes**

**2.3 & 2.5 Clean and
paint entire ceiling**

Figure 5 Harrington Utility Closet Ceiling 2



Figure 6 Harrington Utility Closet Ceiling 1



Figure 7 Harrington Utility Closet Plumbing 1



Figure 8 Harrington Utility Closet Plumbing 2



Figure 9 Harrington Utility Closet Plumbing 3

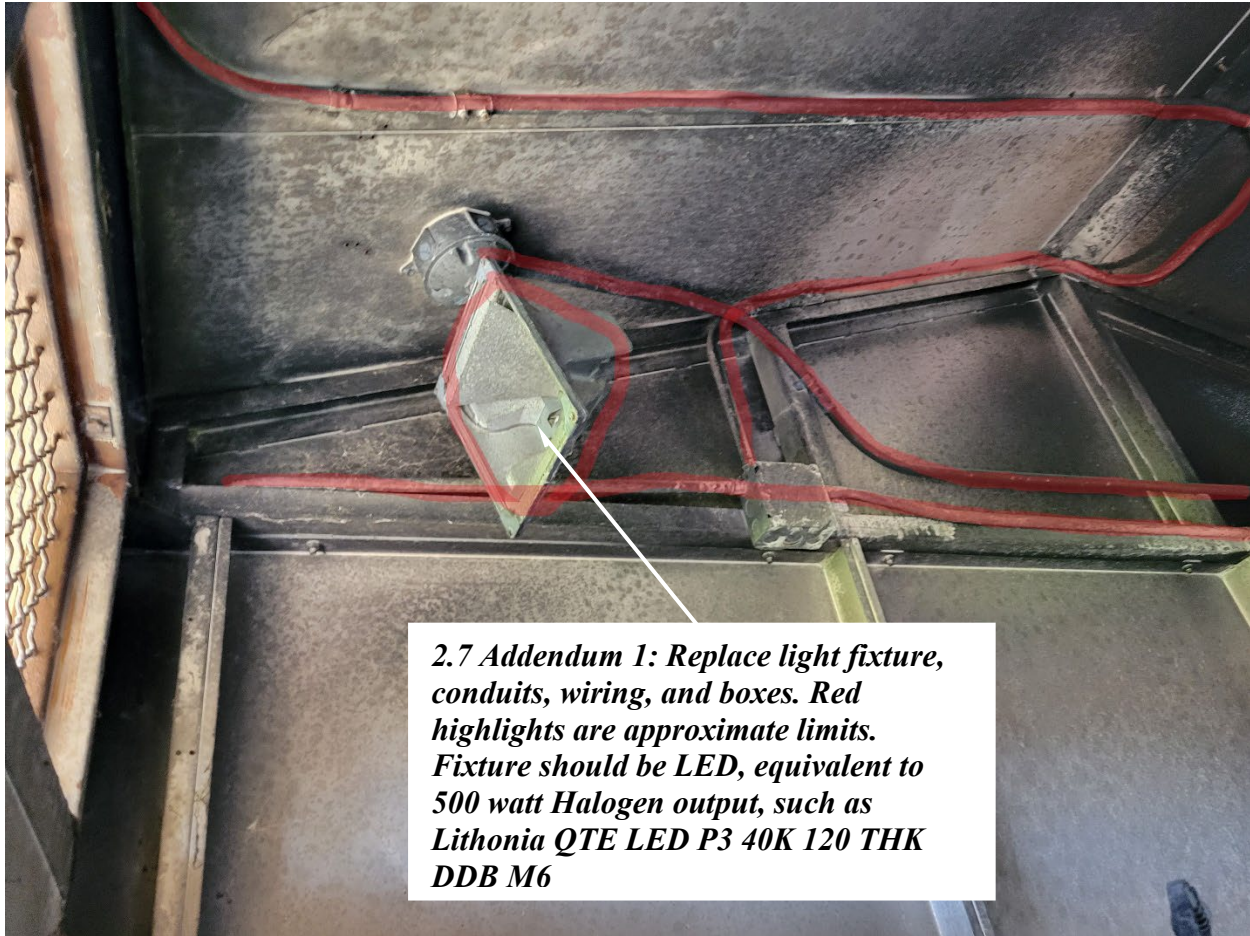


Figure 10 Addendum 1:Harrington Utility Closet Electrical

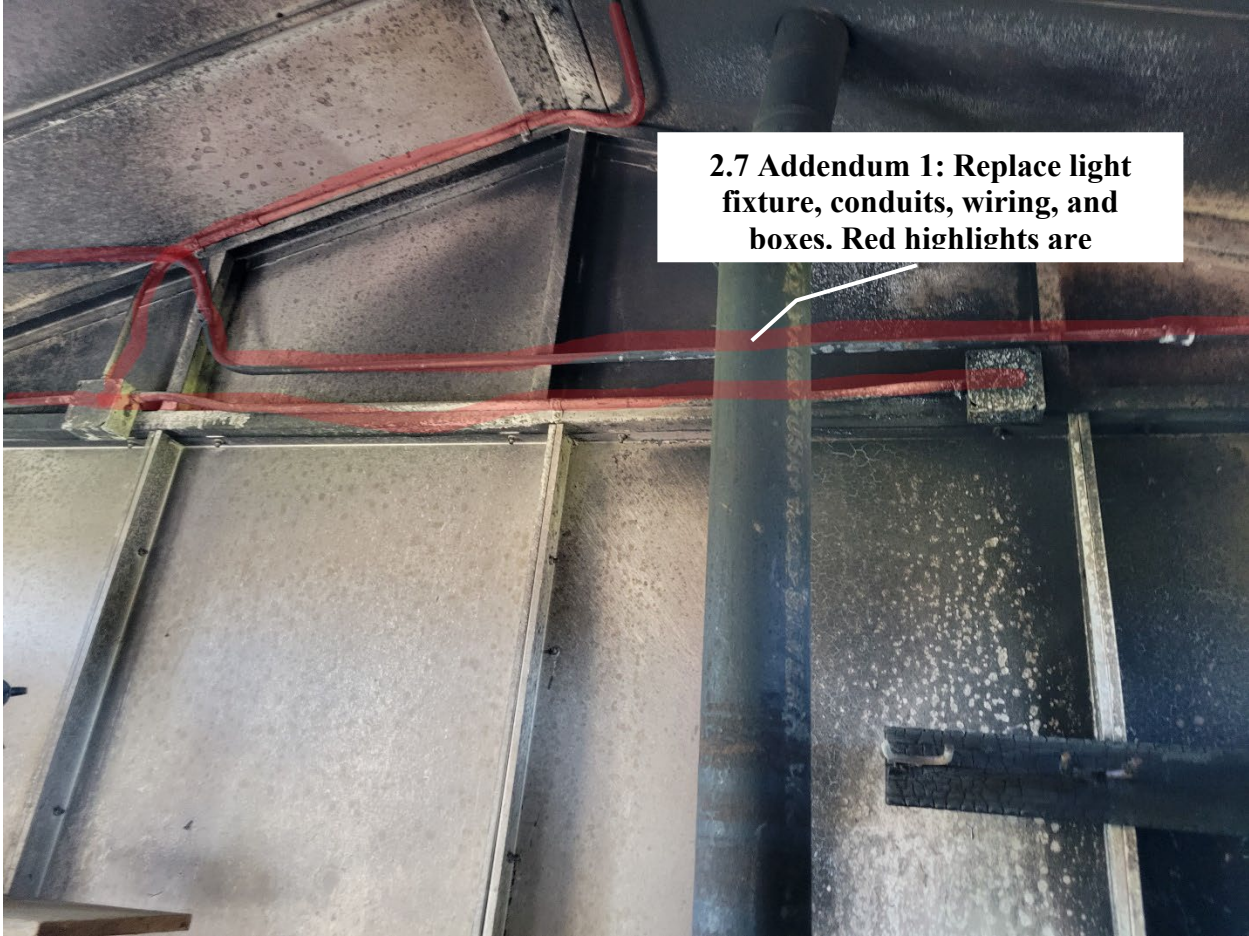


Figure 11 Addendum 1:Harrington Utility Closet Electrical



2.7 Addendum 1: Replace light fixture, conduits, wiring, and boxes. Red highlights are approximate limits

Figure 12 Addendum 1:Harrington Utility Closet Electrical



Figure 13 Harrington Men's Restroom Interior General View

General view of men's restroom exterior (Bid Item #1)



Figure 14 Harrington Men's Stall 1

3. Scope – Men's Restroom (Bid Item #1)

- 3.1. Remove all fire damaged fittings and fixtures including stall partition and doors.
- 3.2. Salvage and clean fixtures when possible (assume toilet, grab bars, and toilet paper dispenser are salvageable).
- 3.3. Clean all walls, ceilings, and surfaces to remove dirt and soot from fire.
- 3.4. Paint all new and cleaned/salvaged surfaces to match existing
- 3.5. Install new partitions and doors (product to match existing or similar, as approved by the City Project Manager).
- 3.6. Install fixtures (grab bars, toilet, toilet seat, toilet paper dispenser) with salvaged fixtures or new where required.
- 3.7. Addendum 1: Replace light fixtures with existing model or equivalent. Existing is Enertron 7026 - L**

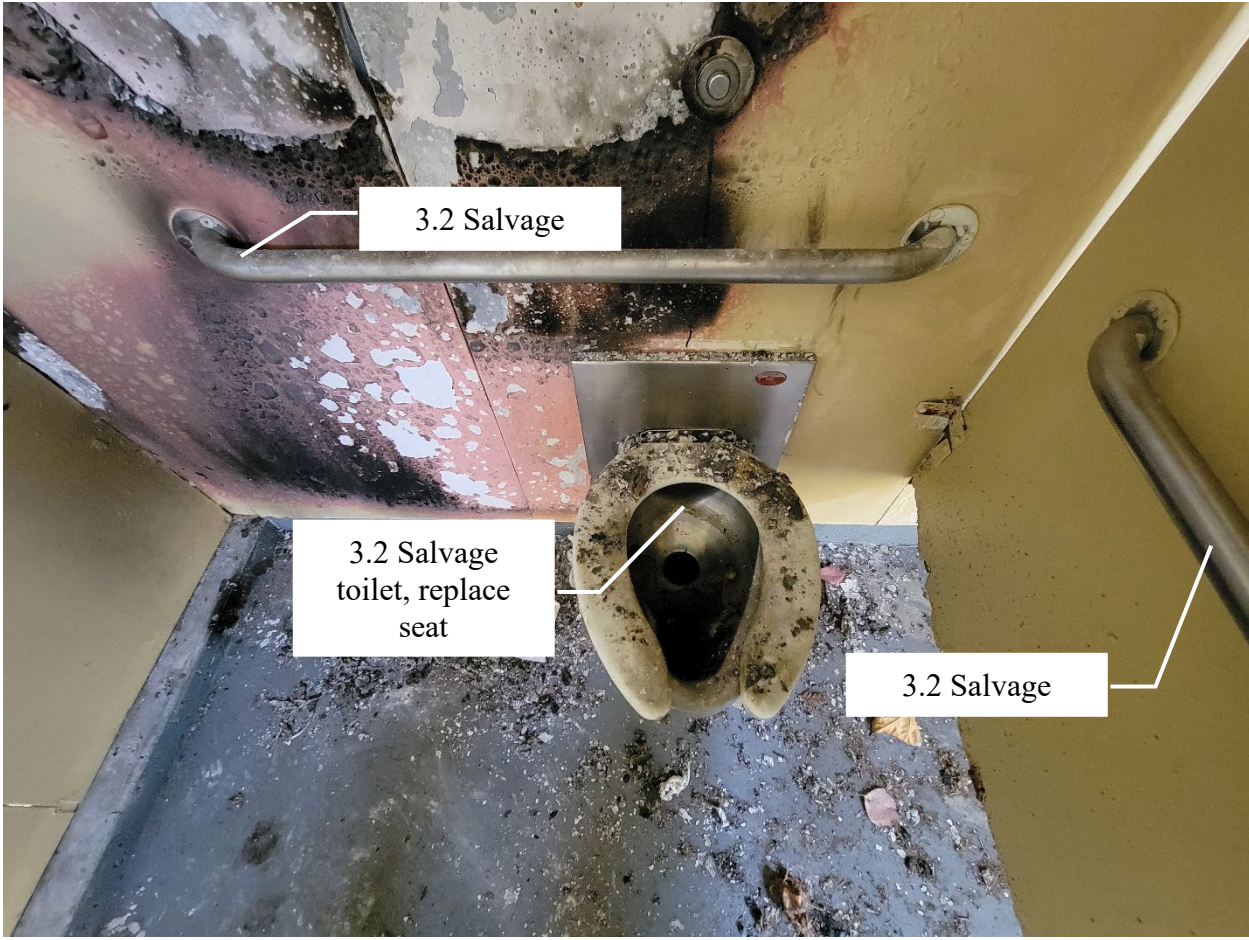


Figure 15 Harrington Men's Stall 2



Figure 16 Harrington Men's Stall 3



Figure 17 Harrington Men's Stall 4



Figure 18 Harrington Men's Restroom Ceiling 1



Figure 19 Harrington Men's Stall Partition



Figure 20 Harrington Men's Restroom Ceiling 2

2.7 Addendum 1: Replace light fixture: this is the existing fixture make and model. Replace with same or in-kind



Figure 21 Addendum 1: Existing Restroom Light Fixture Model Information



Figure 22 Addendum 1: Existing Restroom Door Closer



***1.6 Addendum
1: clean
smoke/fire
residue from
damaged
surfaces and
paint to match***

Figure 23 Addendum 1: Exterior Cleaning and Paint repair – rear wall



Figure 24 Addendum 1: Exterior Cleaning and Paint repair – rear wall



Figure 25 Harrington Women's Restroom Exterior

General view of women's restroom exterior
(Alternate Bid Item# 1)



Figure 26 Harrington Women's Restroom Ceiling

4. Scope – Women's Restroom (Alternate Bid Item# 1)

- 4.1. Clean divider wall and, ceilings, to remove dirt and fire/smoke damage.
- 4.2. Paint ceiling and divider wall to match existing



Figure 27 Harrington Women's Stall

5. Alternate Scope – Women's Restroom Stall (Alternate Bid Item# 1)

- 5.1. Remove and salvage existing fixtures (grab bars, toilet/seat, toilet paper dispenser)
- 5.2. Remove existing stall partition and doors for both stalls.
- 5.3. Install new partitions and doors for both stalls (product to match existing or similar, as approved by the City Project Manager)
- 5.4. Install salvaged fixtures (grab bars, toilet/seat, toilet paper dispenser)



Figure 28 Harrington Women's Restroom General View

ATTACHMENT C

CITY RESPONSES TO CONTRACTOR BID QUESTIONS

HARRINGTON FIELD BID QUESTIONS



DATE RECEIVED	QUESTION	CITY RESPONSE	Response Issued
04/17/23	In reference to the utilities, will power be available from the electrical closet, or will a standby generator be required?	Contractor may use available receptacles in the building.	Addendum 1
04/17/23	Will water be provided to a local connection nearby or is water to be provided by contractor?	Contractor may use on-site water	Addendum 1
04/17/23	Given the scope of work is directed to interior work areas, are the exterior lights at the restroom entrances be required to be repaired or replaced should they not be operational? If so, how many total?	It is assumed that the exterior lights at the entrances are functional and will not be replaced as part of this project	Addendum 1
04/14/23	In the electrical closet, will the interior security light fixture be replaced with a typical unit?	Yes, replace the light in-kind.	Addendum 1
04/14/23	In the electrical closet, what spec fixture will be required to replace the damaged unit at the interior ceiling area?	See attachments to addendum one for details on fixture replacements	Addendum 1
04/14/23	Please confirm that the floor area of the following areas will be clean and paint only: a. Men's restroom floor. b. Women's restroom floor. c. Please identify your expectations for the closet floor area.	Floor painting/coating for all locations is excluded from this project and should not be included in any bid item. Floors shall be cleaned of all smoke/fire residue without damaging the existing coating.	Addendum 1
04/14/23	Regarding the closet door hardware - do you have a manufacturer door schedule and identifying hardware schedule?	Schlage ND70PD, RHO lever, 626 finish	Addendum 1
04/14/23	Will there be a revised Bid Schedule 5-1 pg. 14?	See revised bid schedule in Addendum 1	Addendum 1
04/14/23	As to the materials suppliers, i.e.. Doors, Partitions, will it be necessary for the supplier to have the DIR no. or is it sufficient as the installer for only the installer to have the DIR no.?	The supplier does not need to have a DIR number.	Addendum 1
04/14/23	I'm trying to fill out the form for performance and payment bond, and they are required to know what the liquidated damage is per day. We never talked about that and it is not determined in the Contract Agreement.	Liquidated damages are \$100.00/day, see page 63 of the project specifications	Addendum 1
04/18/23	Pease identify the bid requirement for the safety pedestrian control around the work area. Will there be a bid item for temporary fencing around the work area per O.S.H.A. to include the 3 sides or will there be only barricades to guide pedestrian flow around the work area and the temporary restroom areas?	Contractor is responsible for securing the construction/work area to ensure the safety of the public. Include costs for temporary fencing, barricades, or other measures in your base bid. Safe access for the public must be maintained to at least one operational restroom at all times. If both restrooms are out of service, Contractor to furnish and maintain temporary restrooms with ADA compliant access and hand washing facilities.	Addendum 1
04/19/23	In reference to the utility closet, spec. page 17, 2. Scope 2.4 Remove and replace damaged steel wall panels (assume two full panels and two filler panels between wall and ceiling?	Contractor shall replace all steel wall panels that are damaged (deformed) from the fire. Panels that are not damaged can be reused and shall be cleaned/painted. Contractor is responsible for any panels that are damaged through the course of the work.	Addendum 1

ATTACHMENT D

ELECTRICAL FIXTURES SPECIFICATIONS

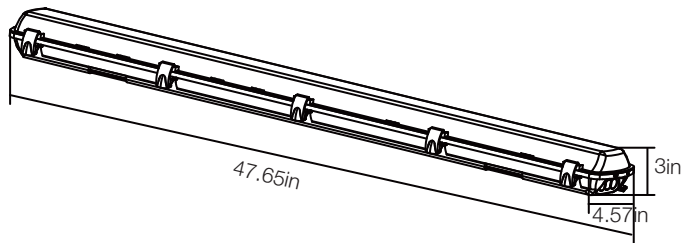
PRODUCT SPECIFICATIONS

4ft LED Vaportight



54656441

SKU# 1001488235



SPECIFICATIONS

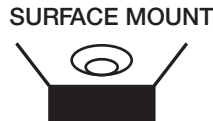
Model Number	54656441
SKU	1001488235
OSMID	302848290
Power	34 W
AC Voltage, Frequency	120-277V, 60 Hz
Color Temp (nom.)	4000K
Operation Temp	-4°F ~ 113°F
CRI	80
Lumen Output (min.)	3600 lm
IP Rating	IP65
Dimming	NO
Lifetime Rating	L70/50000Hrs
Efficacy	105.8 lm/watt

ADVANTAGES

- 50,000 Hours of Continuous Use
- Weatherproof Fixture-IP65 Rated
- 3/4" Knockouts (3)

APPLICATIONS

Suitable for wet locations



PACKAGING

Weight (±0.5 lb)	4.63 lbs
Size (L x W x H) (±0.1 in)	47.65in x 4.57in x 3in
Box Dimensions	49.96in x 4.80in x 3.39in
Gross Weight	5.27 lbs
UPC	849489009766



INCLUDED IN BOX

- Mounting Screws (4)
- Plastic Drywall Anchors (4)
- U Brackets (stainless steel) (2)
- V Clips (stainless steel) (2)
- Cord Grip (1)
- Chain (2)
- "S" Hook (2)
- Wirenut (3)

Contact Information 1-877-527-0313 · WWW.HOMEDEPOT.COM

LEADING THE INDUSTRY WITH QUALITY YOU CAN DEPEND ON



7000 Polycarbonate Wall Pack Series

- **ENDLESS INDOOR/OUTDOOR USE**
Can Be Installed Vertically or Horizontally For...*All High Abuse Areas, Address Marker, Pathway/Step Light, Corridors, Car Ports*
- UL Wet Location Wall Mount
UL Damp Location Ceiling Mount
- White Powder Coated Reflector
- LEXAN **Black**, White Housing or **NEW** Bronze Now Available
- LEXAN Clear Prismatic Lens Standard
Colored Lexan Lens Upon Request...
Opaque, Amber, Green, Blue, Red
- Gasket Available Upon Request
- Stainless Steel Tamper Resistant 3/32" Allen Head Screws Upon Request
- Photocell Available
- Instant Start Twin Tube (LI) 13 Watt Lamp Available Upon Request
- **Magnetic Ballast** 45,000+ Class P Thermally Protected, Two-Piece Ballast and Lamp
- **Electronic Ballast (E)** High Quality USA Engineered, Programmed Start 120-277V
- Residential, Non Programmed Start Electronic 120V Ballast Also Available, Title 24 Compliant (70R26EQB-L)

Model	Ballast Type	Watts	Equivalent Incandescent	Initial Lumens	Rated Average Lamp/Ballast Life	Dimensions			Min. Start Temp
						D	W	H	
7500-L	Mag.	9	50 watts	600	10,000+/45,000+ Hrs.	4"	4.625"	8.562"	20° F
7800-L	Mag.	13	60 watts	900	10,000+/45,000+ Hrs.	4"	4.625"	8.562"	20° F
7800E-L	PS Elec	13E	60 watts	900	10,000+/45,000+ Hrs.	4"	4.625"	8.562"	0° F
7900-L	Mag.	22 Quad	75 watts	1300	10,000+/45,000+ Hrs.	4"	4.625"	8.562"	- 26° F
7026-L	Mag.	26 (2x13)	120 watts	1800	10,000+/45,000+ Hrs.	4"	4.625"	8.562"	20° F

Set Screw Holds Lamp in Place for Versatile Positioning (13, 22 And 26 Watt Units Only)
Add 'B' For Black Housing, 'W' For White Housing, 'BZ' For Bronze Housing
Cool White (CW) Lamps Available Upon Request

**Vertically Integrated Manufacturer
Made In USA**

QTE LED

Flood Light

Versatile and Cost Effective

The QTE LED is a family of cost effective, energy efficient floodlights, perfect to replace up to 500W Quartz Halogen floodlights with up to 85% energy savings. With over 10 years of service life, QTE LED eliminates the frequent halogen lamp changes and cuts maintenance costs. The QTE LED floodlights are great for a wide range of commercial and residential applications.

Cost Savings

This cost effective, LED floodlight pays for itself within one year with low upfront and installation cost

Great Versatility

QTE LED is an extremely energy efficient solution, ideal for illuminating yards, driveways, signage, patios, warehouses as well as for security.

Mounting Options Available

Knuckle and yoke mounting options available. With 6kV surge rating, QTE LED is great for ground mount, junction box or building mount applications.



Quick Facts:

- Replaces up to 500W Quartz Halogens
- DLC Listed!
- Available in two colors - Textured Bronze and White
- 4000K and 5000K CCT options
- 5 Year warranty

Learn more about our flood lights at www.lithonia.com

QTE LED

Ordering Information

Product	Lumens	Finish	CCT	Mounting Options	Catalog Number	UPC Code	CI Code
	2,500	Dark Bronze	4000K	Knuckle	QTE LED P1 40K 120 THK DDB M6	191848090787	*264ES4
			5000K	Knuckle	QTE LED P1 50K 120 THK DDB M6	191848090824	*264E57
		White	4000K	Knuckle	QTE LED P1 40K 120 THK WH M6	191848090893	*249XLX
			5000K	Knuckle	QTE LED P1 50K 120 THK WH M6	191848090375	*249XR4
	4,400	Dark Bronze	4000K	Knuckle	QTE LED P2 40K 120 THK DDB M6	191848093436	*249XR7
				Yoke	QTE LED P2 40K 120 YK DDB M6	191848093474	*249XR9
			5000K	Knuckle	QTE LED P2 50K 120 THK DDB M6	191848093498	*249XRE
				Yoke	QTE LED P2 50K 120 YK DDB M6	191848093535	*249XRH
		White	4000K	Knuckle	QTE LED P2 40K 120 THK DDB M6	191848092613	*249XNW
				Yoke	QTE LED P2 40K 120 YK DDB M6	191848092583	*249XNV
			5000K	Knuckle	QTE LED P2 50K 120 THK DDB M6	191848092576	*249XNU
				Yoke	QTE LED P2 50K 120 YK DDB M6	191848092569	*249XNT
	6,900	Dark Bronze	4000K	Knuckle	QTE LED P3 40K 120 THK DDB M6	191848092590	*249XNS
				Yoke	QTE LED P3 40K 120 YK DDB M6	191848092606	*249XNR
			5000K	Knuckle	QTE LED P3 50K 120 THK DDB M6	191848092514	*249XNP
				Yoke	QTE LED P3 50K 120 YK DDB M6	191848092545	*249XNN
		White	4000K	Knuckle	QTE LED P3 40K 120 THK DDB M6	191848092538	*249XNM
				Yoke	QTE LED P3 40K 120 YK DDB M6	191848092552	*249XNL
			5000K	Knuckle	QTE LED P3 50K 120 THK DDB M6	191848092521	*249XNK
				Yoke	QTE LED P3 50K 120 YK DDB M6	191848092453	*249XNH

Learn more about our wall packs at www.lithonia.com.

