

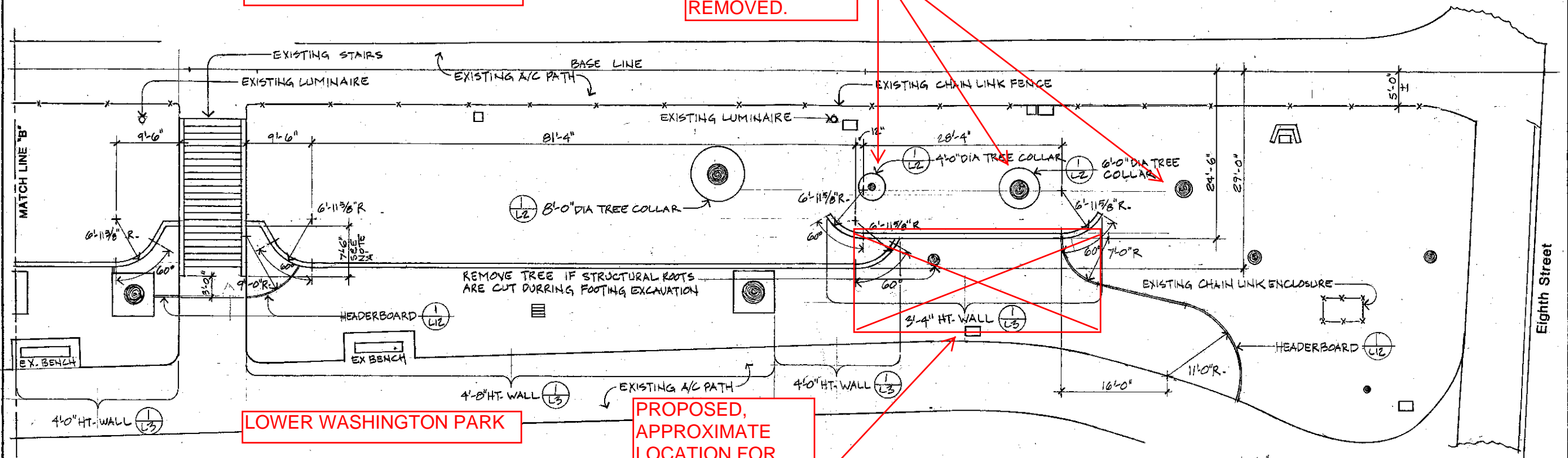
EXHIBIT G

UPPER WASHINGTON PARK

THESE THREE TREES NO LONGER EXIST AND HAVE BEEN REMOVED.

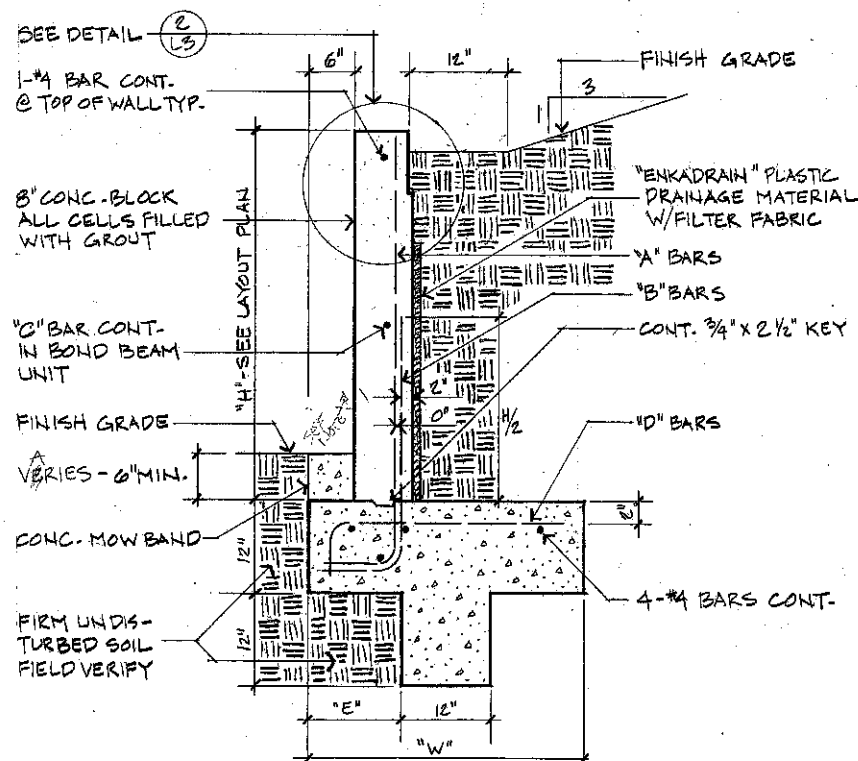
APPROXIMATE LOCATION OF THE EXISTING EIGHTH & PORTOLA PUMP STATION.

TREE TO REMAIN



LOWER WASHINGTON PARK

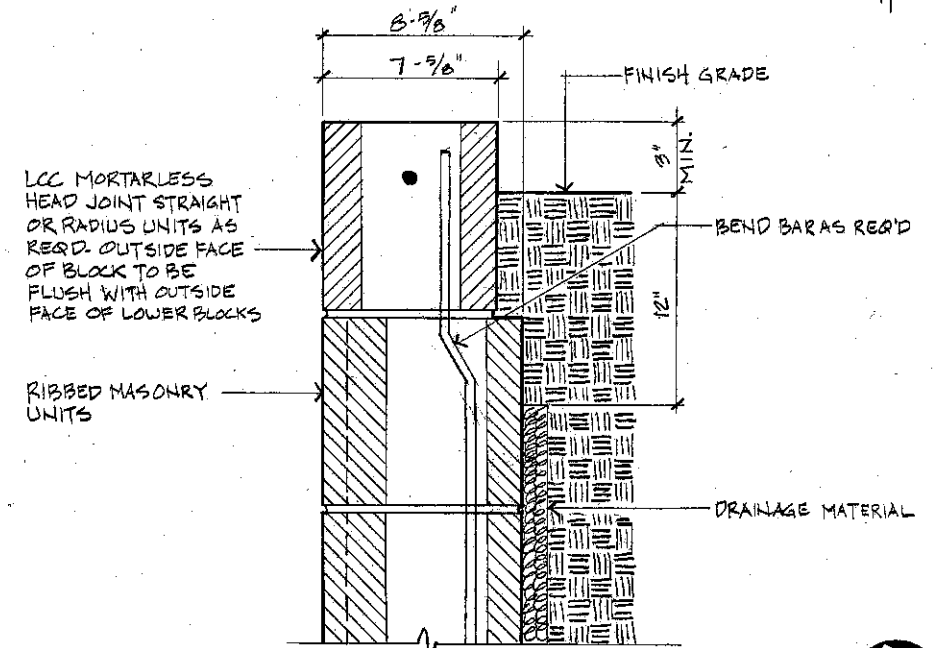
PROPOSED, APPROXIMATE LOCATION FOR THE NEW EIGHTH & PORTOLA PUMP STATION.



SCHEDULE 1 REINFORCEMENT						
HEIGHT "H"	W	C	A BARS	B BARS	C BARS	D BARS
3'-4"	2'-9"	0'-9"	4 @ 16"	-	4 @ 16"	4 @ 24"
4'-0"	3'-3"	1'-0"	4 @ 16"	-	4 @ 16"	4 @ 24"
4'-8"	3'-6"	1'-3"	4 @ 16"	-	4 @ 16"	4 @ 24"
5'-4"	4'-0"	1'-6"	4 @ 16"	4 @ 16"	4 @ 16"	4 @ 16"
5'-4"*	3'-6"	1'-3"	4 @ 16"	-	4 @ 16"	4 @ 24"

* LEVEL BACKFILL ONLY

- NOTES: 1. OMIT HEAD JOINT MORTAR EVERY 4'-0" O.C. AS WEEP HOLES ON BLOCK COURSE ABOVE MOW BAND.
2. ALL DIMENSIONS SHOWN FOR LOCATION OF REINFORCING BARS ARE TO FACE OF BAR AND DENOTE CLEAR CONCRETE OR GROUT COVERAGE UNLESS OTHERWISE NOTED.
3. TOP OF WALL TO BE HORIZONTAL.



2 RETAINING WALL CAP DETAIL
SCALE 3/4" = 1'-0"

EAST AREA L-3

1 RETAINING WALL
NO SCALE

Theodore Osmundson & Associates
Landscape Architecture & Urban Design
136 South Park San Francisco California 94107 415-541-9071

BENCH MARK

REFERENCES

CITY OF ALAMEDA
CALIFORNIA

APPROVED BY

WASHINGTON PARK
RETAINING WALL
LAYOUT PLAN

DATE AUG 4, 1987
SHEET 4 OF 17
DWG. CASE
8190 71

1300 8th St



Image capture: Apr 2019 © 2020 Google

Alameda, California



Street View

